

CONTACT INFORMATION

- Website: www.supermicro.com
- General Information: marketing@supermicro.com
- Technical Support: support@supermicro.com
- Phone: +1 (408) 503-8000, Fax: +1 (408) 503-8008

FOR YOUR SYSTEM TO WORK PROPERLY, PLEASE DOWNLOAD APPROPRIATE

- DRIVERS/IMAGES/USER'S MANUAL FROM THE LINKS BELOW:**
- Manuals: <http://www.supermicro.com/support/manuals>
 - Drivers & Utilities: <http://www.supermicro.com/wftp>
 - Safety: http://www.supermicro.com/about/policies/safety_information.cfm

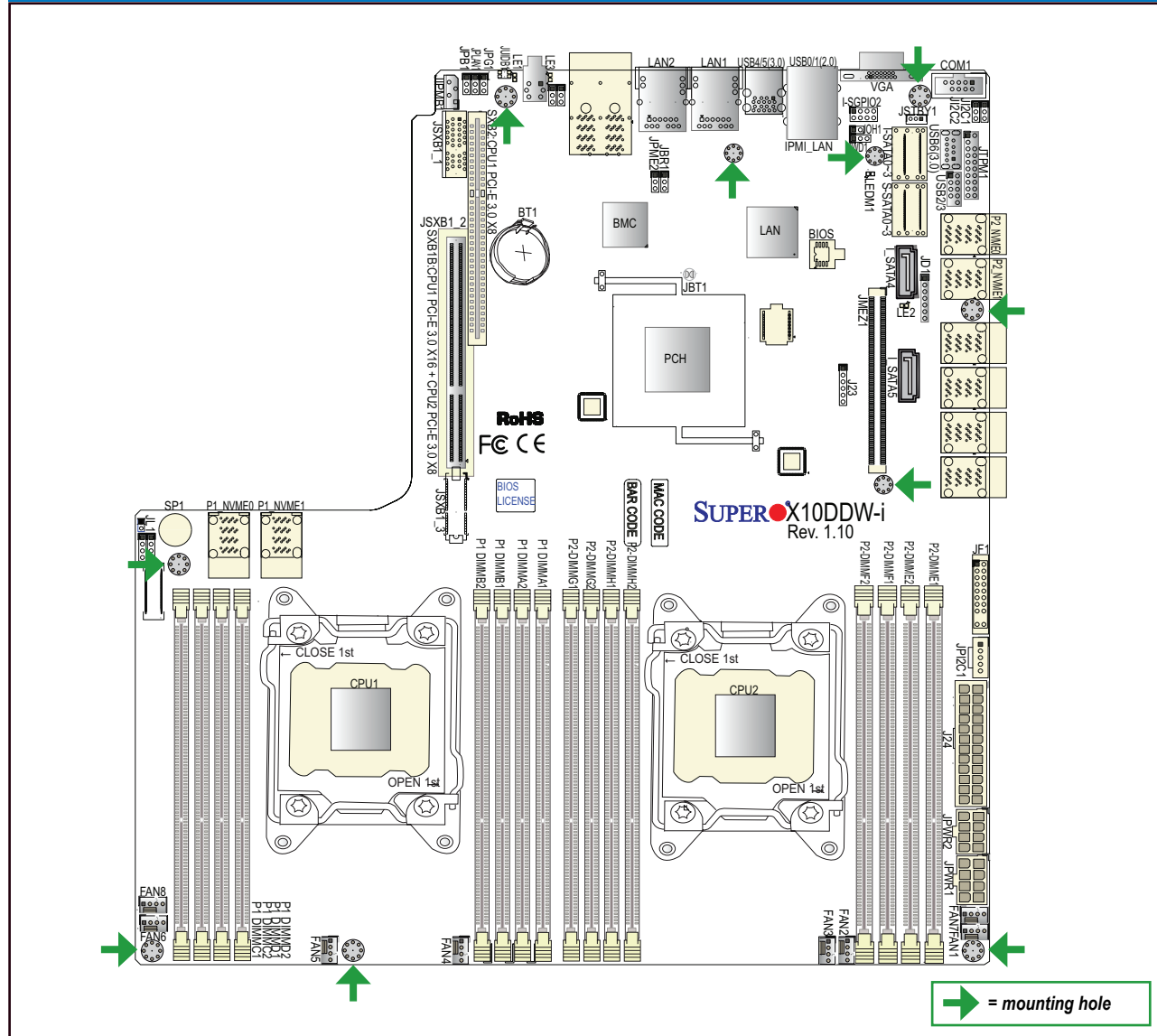
PACKAGE CONTENTS

- One (1) Supermicro Motherboard
- Two (2) SATA Cables
- Two (2) RA IPASS to 4SATA cables
- One (1) Quick Reference Guide



WARNING: This product can expose you to chemicals including lead, known to the State of California to cause cancer and birth defects or other reproductive harm. For more information, go to www.P65Warnings.ca.gov.

Motherboard Layout and Features



Jumpers, Connectors and LED Indicators

Jumpers		
Jumper	Description	Default Setting
JBT1	Clear CMOS	Open: Normal, Short: Clear CMOS
J1 ² C1/J1 ² C2	SMB to PCI-E Slots	Pins 2-3 (Disabled)
JPB1	BMC Enable	Pins 1-2 (Enabled)
JPG1	VGA Enable	Pins 1-2 (Enabled)
JPLAN1	GLAN1/GLAN2 Enable	Pins 1-2 (Enabled)
JPME2	Manufacture (ME) Mode Select	Pins 1-2 (Normal)
JWD1	Watch Dog Timer Enable	Pins 1-2 (Reset)

Connectors		
Connectors	Description	
Battery (BT1)	Onboard CMOS battery (See Chpt. 3 for Used Battery Disposal)	
COM1	COM header	
Fan1-8	System cooling fan headers (1-8)	
J24	24-pin ATX main power connector (See Warning on Page. 1-6.)	
JD1	Speaker/Power LED	
JF1	Front Panel Control header	
JIPMB1	4-pin External BMC I ² C header (for an IPMI card)	
JL1	Chassis Intrusion header	
JPI ² C1	Power Supply SMBbus I ² C header	
JPWR1/2	12V 8-Pin power connectors (See Warning on Pg. 1-6.)	
JMEZ1	SMCI-proprietary PCI-E 3.0 x8 Mezzanine slot w/SAS support	
JRUIO1 (SXB2)	CPU1 PCI-E 3.0 x8 slot for Low-profile (LP) networking connection (NIC) support	
JSXB1_1/1_3	SMCI-proprietary PCI-E 3.0x4 slots support	
JSXB1_2 (SXB1B)	SMCI-proprietary CPU1 PCI-E 3.0 x16 + CPU 2 PCI-E 3.0 x16 slot w/Riser card support	
JSTBY1	Standby Power connector	
JTPM1	TPM (Trusted Platform Module)/Port 80 header	
LAN1/LAN2	G-bit Ethernet (GLAN) Port 1/Port 2	
(IPMI) LAN	IPMI_Dedicated LAN support by the Aspeed controller	
P1_NVME0_1 (X10DDW-iN Only)	NVM Express PCI-Express 3.0 x4 Ports 0, 1 (from CPU1)	
P2_NVME0/1 (X10DDW-iN Only)	NVM Express PCI-Express 3.0 x4 Ports 0/1 for back panel support (from CPU2)	
I-SATA 0-3 (JS1)	Intel SATA 3.0 connectors 0-3	
I-SATA 4, 5	Intel SATA 3.0 connections 4, 5	
S-SATA 0-3 (JS2)	SATA 3.0 connectors 0-3	
I-SGPIO2 (SATA-SGPIO1)	Serial_Link General Purpose I/O Header 2 for SATA connections	
SP1	Internal Speaker/Buzzer	
UID (JUIDB1)	Unit Identified (UID) button	
(BP) USB 0/1	Backpanel USB 2.0 Ports 0/1	
(FP) USB 2/3	Front accessible USB 2.0 connection header 2/3	
(BP) USB 4/5 (3.0)	Backpanel USB 3.0 connections 4/5	
(FP) USB 6 (3.0)	USB 3.0 Type A Connection header 6 for front access	
VGA	Backpanel VGA Port	

LED Indicators			
LED	Description	State	Status
LE1	Rear UID LED	Blue: On	Unit Identified
LE2	Onboard PWR LED	On	System Power On
LEDM1	BMC Heartbeat LED	Green: Blinking	BMC Normal

CPU Support

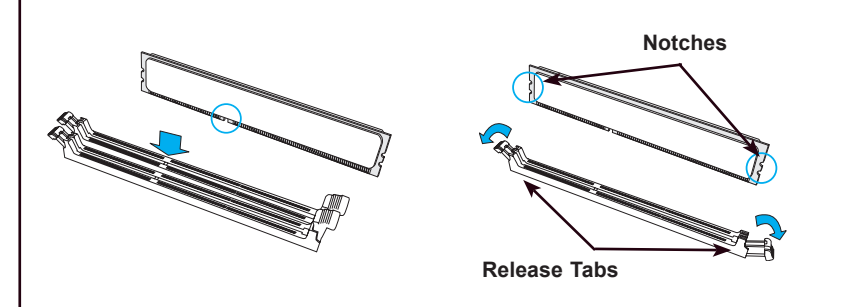
Dual Intel® E5-2600 (V3 and V4) processors (Socket R3-LGA 2011); each processor supports dual full-width Intel QuickPath Interconnect (QPI) links (of up to 9.6 GT/s one direction per QPI).

Memory Support

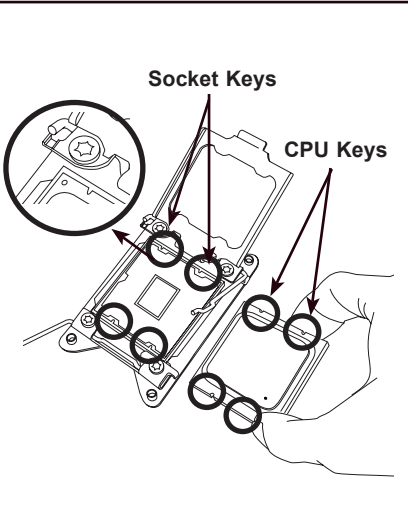
The X10DDW-i/N Motherboard supports up to 1024 GB of Load Reduction (LRDIMM), and up to 512 GB of Registered (RDIMM) DDR4 (288-pin) ECC 2400/2133/1866/1600/1333 MHz memory in 16 slots (2 DIMMs per channel). Memory speed support depends on the processors installed in the system. For the latest CPU/memory updates, please refer to our website at <http://supermicro.com/products/motherboard>.

Memory support for E5-2600V3						Memory support for E5-2600V4														
Type	Ranks Per DIMM and Data Width	DIMM Capacity (GB)		Speed (MT/s); Voltage (V); Slot Per Channel (SPC) and DIMM Per Channel (DPC)			Type	Ranks Per DIMM and Data Width	DIMM Capacity (GB)		Speed (MT/s); Voltage (V); Slot Per Channel (SPC) and DIMM Per Channel (DPC)									
		4Gb	8Gb	1 Slot Per Channel	2 Slots Per Channel	1DPC			2DPC	20PC	4Gb	8Gb	1 Slot Per Channel	2 Slots Per Channel	1DPC	2DPC	20PC			
RDIMM	SRx4	8GB	16GB	2133	2133	1866	RDIMM	SRx4	8GB	16GB	2400	2400	2133	RDIMM	SRx8	4GB	8GB	2400	2400	2133
RDIMM	SRx8	4GB	8GB	2133	2133	1866	RDIMM	SRx8	4GB	8GB	2400	2400	2133	RDIMM	DRx8	8GB	16GB	2400	2400	2133
RDIMM	DRx8	8GB	16GB	2133	2133	1866	RDIMM	DRx8	8GB	16GB	2400	2400	2133	RDIMM	DRx4	16GB	32GB	2400	2400	2133
RDIMM	DRx4	16GB	32GB	2133	2133	1866	RDIMM	DRx4	16GB	32GB	2400	2400	2133	LRDIMM	QRx4	32GB	64GB	2400	2400	2400
LRDIMM	QRx4	32GB	64GB	2133	2133	2133	LRDIMM	QRx4	32GB	64GB	2400	2400	2400	LRDIMM	8Rx4	64GB	128GB	2400	2400	2400
LRDIMM	8Rx4	64GB	128GB	2133	2133	2133														

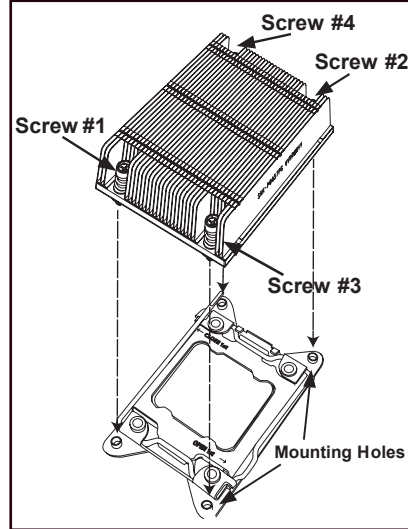
DIMM Memory Installation



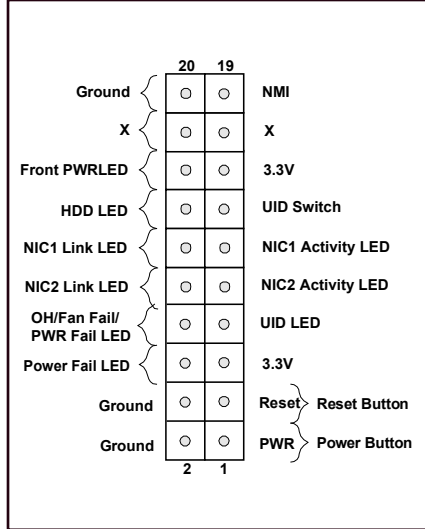
CPU Installation



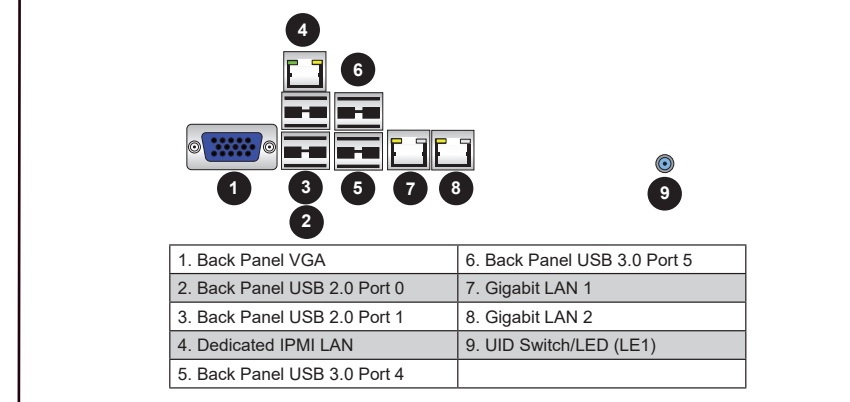
Heatsink Installation



Front Panel Control (JF1)



Back Panel I/O Connectors



Note: Graphics shown in this quick reference guide are for illustration only. Your components may or may not look exactly the same as drawings shown in this guide.

Note: Refer to Chapter 1 of the User Manual for detailed information on jumpers, connectors, and LED indicators.

Note: Refer to Chapter 2 of the User Manual for detailed information on memory support and CPU/motherboard installation instructions.