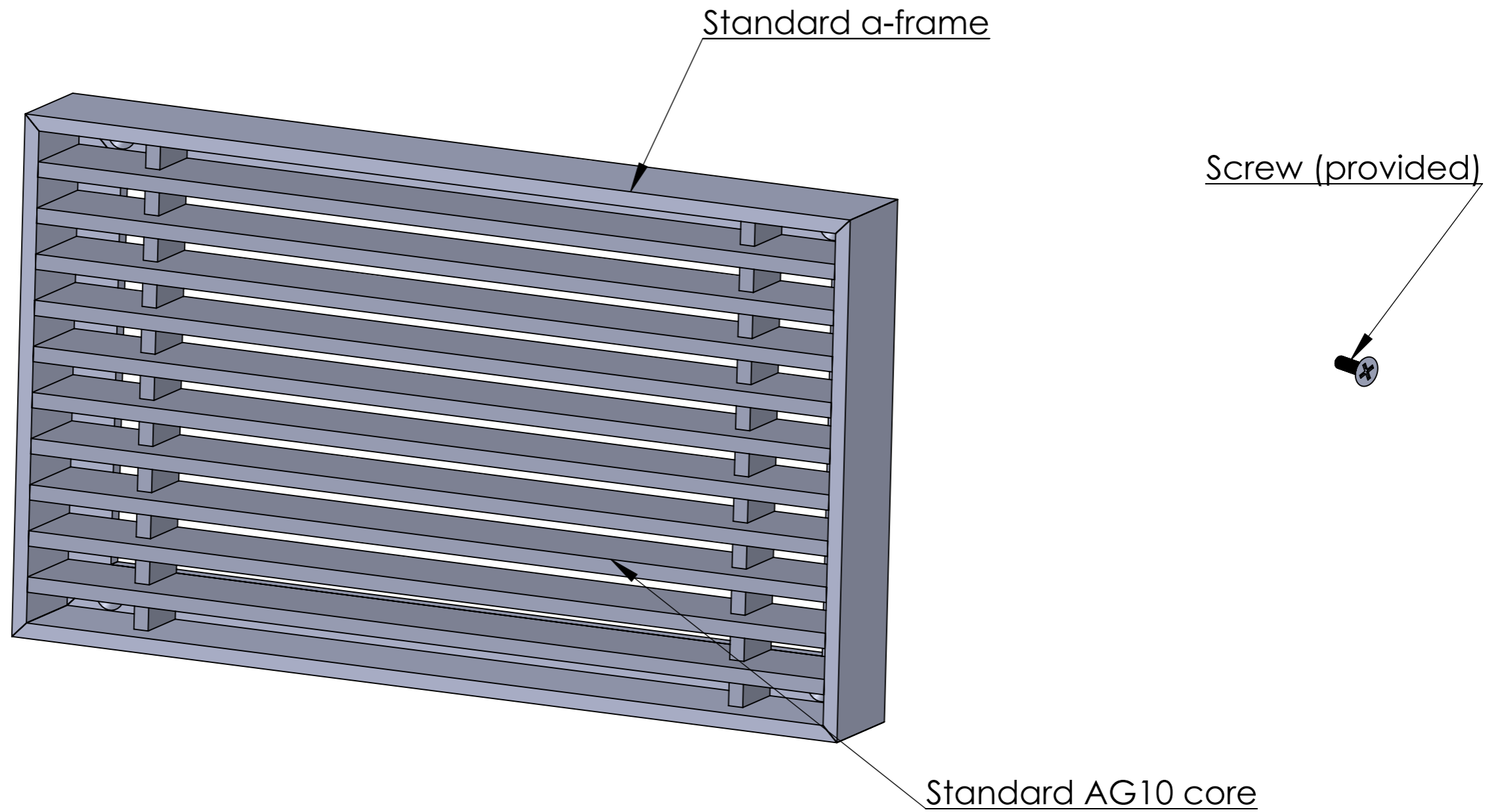
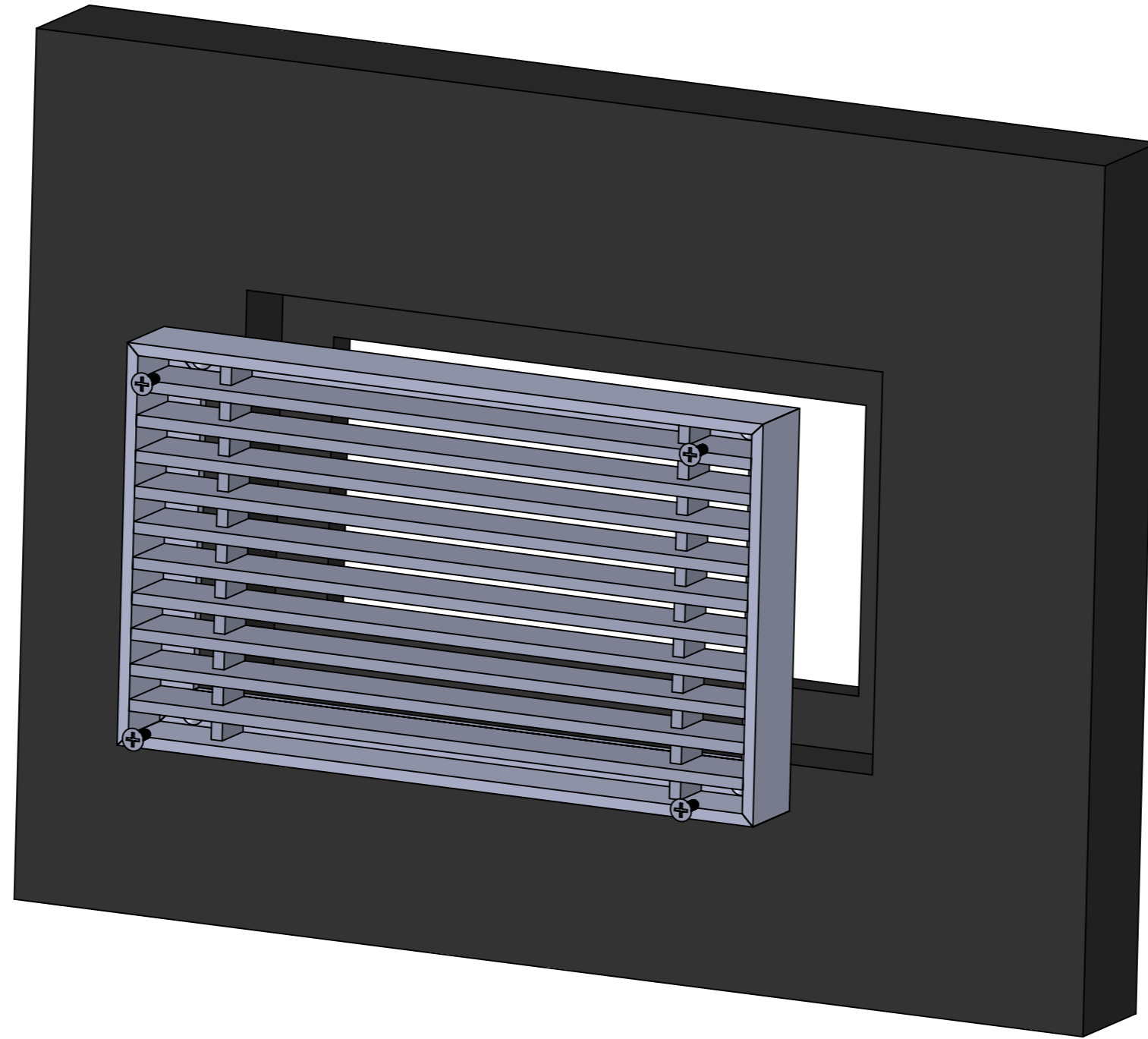


Parts needed for assembly using method #516



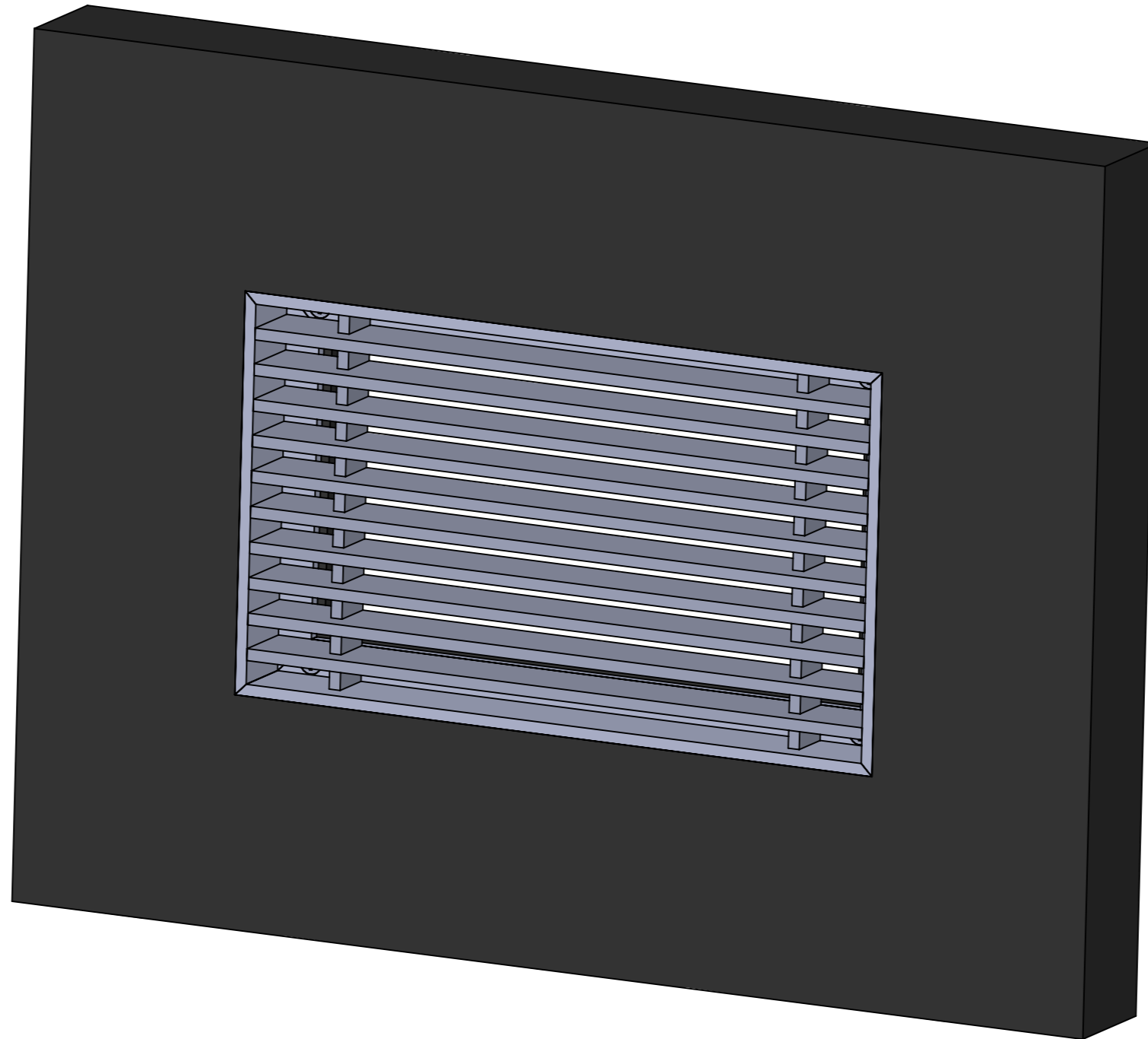
Disclaimer:
This step by step layout is one of the many ways someone can install their custom grille using method #516

	ARCHITECTURAL GRILLE				
	42 SECOND AVENUE BROOKLYN, NY 11215 WWW.ARCHGRILLE.COM				
CUSTOMER			Drawn by Heg	SIZE A3	REV -
DESCRIPTION #516 Method of fastening		SCALE 1"=1"	SHEET DMS.516.1		



Step 1:
 Place welded a-frame & AG10 core into the opening.
 Attach a-frame to the opening using Screws(provided).
 Screw through the provided holes in the a-frame as necessary.

	ARCHITECTURAL GRILLE				
	42 SECOND AVENUE BROOKLYN, NY 11215 WWW.ARCHGRILLE.COM				
CUSTOMER			Drawn by Heg	SIZE A3	REV -
DESCRIPTION #516 Method of fastening			SCALE 1"=1.5"	SHEET DMS.516.2	



Step 2:
Welded a-frame & AG10 core attached to the opening using Screws(provided).

Installation complete.

	ARCHITECTURAL GRILLE				
	42 SECOND AVENUE BROOKLYN, NY 11215 WWW.ARCHGRILLE.COM				
CUSTOMER			Drawn by Heg	SIZE A3	REV -
DESCRIPTION #516 Method of fastening			SCALE 1"=1.5"	SHEET DMS.516.3	