

MATERIALS & FINISHES

ALUMINUM

- Satin
- Mirror Polish
- Primed
- Anodized Colors:
 - Clear
 - Black
 - Duranodic
 - > Light
 - > Medium
 - > Dark
- Powder Coating

BRASS or BRONZE

- Satin
- Mirror Polish
- Statuary (US10B):
 - > Light
 - > Medium
 - > Dark

STAINLESS STEEL

- Satin
- Mirror Polish

STEEL

- Raw
- Primed
- Powder Coating

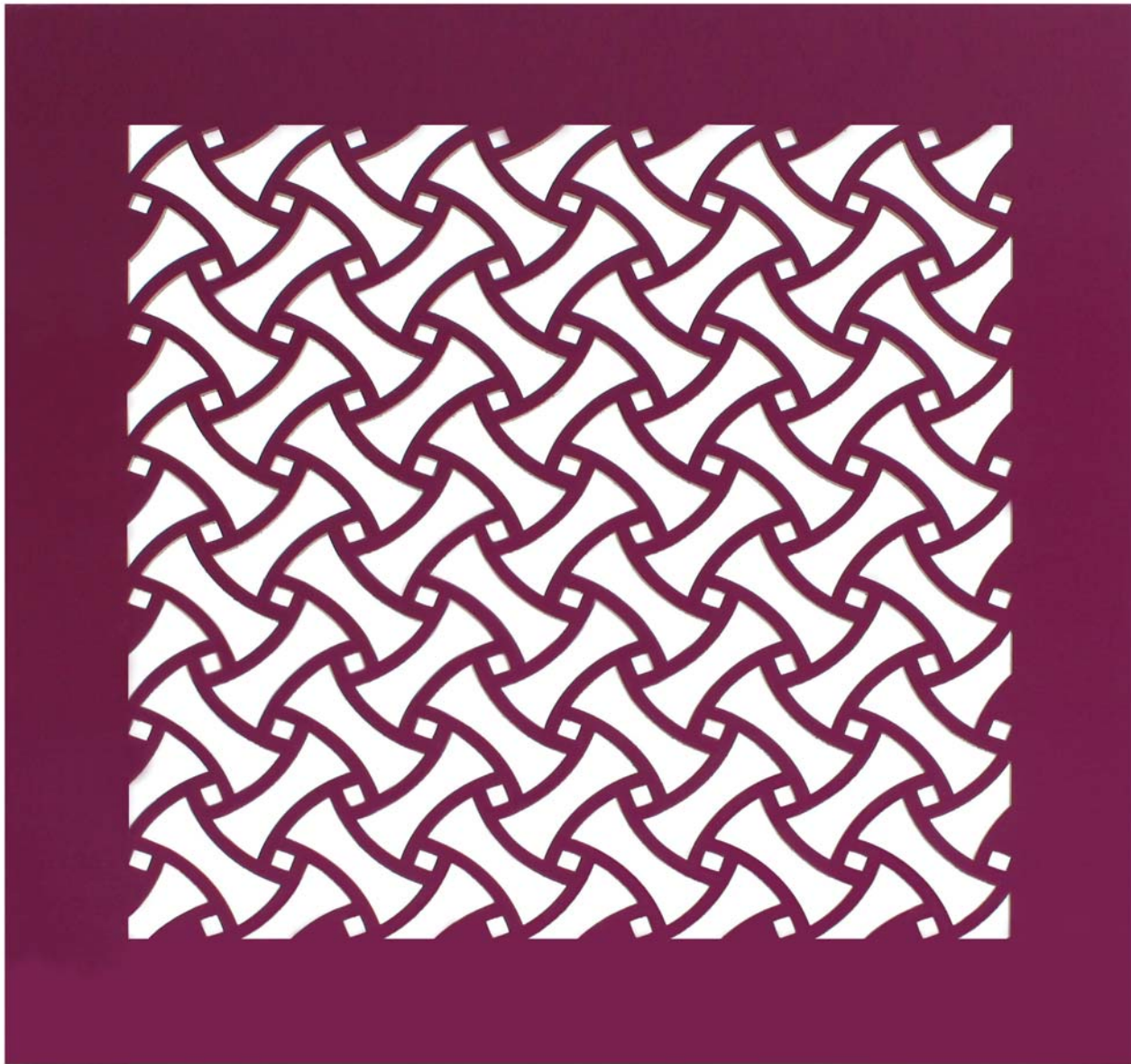
THICKNESSES*

- Aluminum, Brass, Bronze, Steel:
1/16" - 1/8"
- Stainless Steel:
1/16" - 14 GA

*NOTE: Additional thicknesses available – ask your estimator for details.

ARCHITECTURAL GRILLE

230 PINWHEEL



- 1.75" pattern - 58% open area (shown)

AVAILABLE OPTIONS

- Beveled Edges
- Bending
- Access Door(s)
- Custom Borders
- Curved: *concave, convex or flat face*

TO ORDER:

1.800.387.6267

P: 718.832.1200

F: 718.832.1390

ARCHGRILLE.COM

- Patterns shown are not to scale. Full scale available in "downloads" on our website.