



AZ620 and AZ820 AZURE Series In-Ceiling Speakers

Tri-Mode™ Dual-Voice Coil/Dual Tweeter Ultra-Thin Bezel In-Ceiling Architectural Speakers



The AZURE™ AZ620 and AZ820 speakers are Atlantic Technology's most advanced in-ceiling speakers. Incorporating the latest driver technology into an ultra-thin bezel design, the speakers offer incredible installation flexibility, fitting into even the tightest of ceiling locations.

These versatile multi-purpose speakers can be configured for conventional mono use, single-point stereo or dipole surround. Available with either 6.5- or 8-inch dual voice coil woofers, the driver cone material is made of our advanced formed, light and stiff Fiberglass material that's humidity-resistant. It's the same as used in our award-winning flagship 8600 series in-room home theater speakers. The driver's massive magnet structure and vented pole piece contribute considerably to their stellar performance.

The woofers are complemented by advanced dual ¾-inch (AZ620) and 1-inch (AZ820) silk-dome LRT™ tweeters which utilize Ferrofluid cooling and super-efficient Neodymium magnets. These wide dispersion tweeters are coupled with a computer-optimized cross-over composed of audiophile grade precision components. The tweeters can be pivoted up to 30° allowing installers to fine-tune their dispersion and orientate them to the listening area.

The discreet profile of the AZ620 and AZ820 speakers is due to Atlantic's ultra-thin bezel design that uses magnetically attached paintable grilles. Plus a host of optional accessories makes installations fast and easy for a professional result.

The AZ620 and AZ820's premium engineering and design delivers outstanding Atlantic sound quality, with voicing that make them a perfect complement to Atlantic Technology box or in-wall speakers. With their dual driver / dual tweeter design they offer incredible versatility for installers. One single speaker can be configured to deliver full 2-channel stereo sound, operate with a second speaker as a stereo pair or as a switchable Dipole/Bipole speaker in a Home Theater surround sound system.

Features



AZURE series speakers feature advanced humidity-resistant, fast, light, stiff, Fiberglass woofer material as found in the latest premium 8600 Atlantic Technology home-theater speaker systems.

The durable butyl rubber woofer surround ensures stable long-lasting performance and the formed curved woofer shape avoids cone breakup and reduces distortion for a cleaner midrange.

The AZ620 and AZ820 long throw 1-inch high-temperature voice coils operate in a massive magnet structure with a vented pole piece to produce excellent bass performance.

Their horn shaped enclosures are acoustically optimized for midrange clarity and wide dispersion.

The AZURE 20 series tweeters are mounted on a reinforced low-resonance bridge for clean low distortion sound out to 22 kHz even at high listening levels.

Atlantic's proprietary LRT tweeter is a natural sounding coated silk-dome tweeter that's 3/4-inch on the AZ620 and 1-inch on the AZ820. Both feature excellent dispersion without sounding aggressive even when located near room occupants. Neodymium magnets with Ferrofluid cooling deliver reliable efficient operation.

All AZURE series speakers have a 30° orbital pivoting system that adjusts speaker directionality to reduce boundary reflections and fine-tune the installation for optimal stereo separation and image blending.



For further installation flexibility, the AZ620/820 also include a convenient front mounted Dipole/Bipole switch optimizing the speaker to its placement and surroundings for a more diffuse effect suited for surround applications or a more localized sound for music applications.



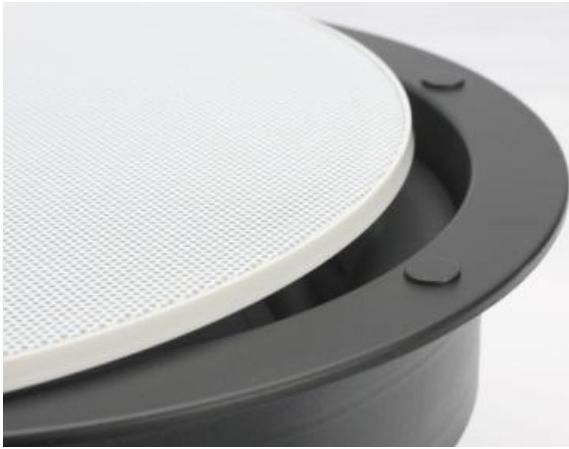
Atlantic's AZURE 20 series speakers feature computer optimized 12 dB/octave precision crossovers. The crossover is made using audiophile grade components including polypropylene capacitors, air core inductors and a built-in resettable polswitch for speaker protection.

Heavy duty gold-plated, push-spring binding posts provide quick secure connections capable of accommodating up to 14 gauge cable.



Rotating clamp dog-leg fasteners make for fast and easy installations.

Optional pre-construction brackets and back boxes aid to ensure professional installation results



Ultra-thin bezels with magnetically attached low-profile paintable grilles produce a stealth installation.

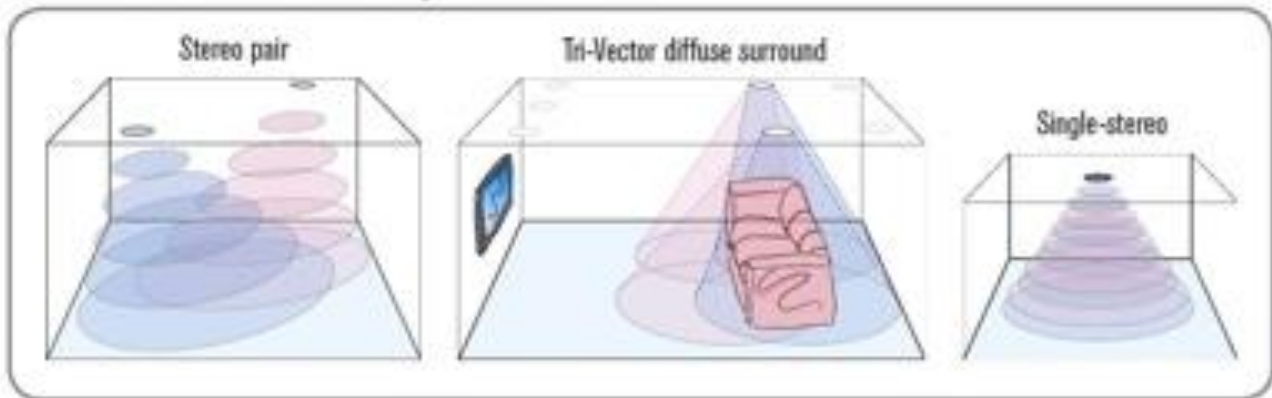
Square paintable grilles are optionally available.



Atlantic Technology's unique TriMode controls, operation and benefits

Each AZURE 20 series speaker has two sets of switches that enable 3 different modes of operation.

3 modes of operation



Mono/Stereo Jumpers - The back of the speaker has two sets of gold-plated push-to-connect spring-loaded speaker cable terminals and a set of jumpers to modify the speaker configuration for mono or stereo operation.

- **Conventional (Mono)** – With the jumper set to mono, the dual voice coil woofers and dual silk dome tweeters produce superlative sound for standard stereo music reproduction when speakers are used in stereo pairs.
- **Single-Point Stereo** – With the jumper set to stereo, these speakers can be wired to deliver full 2-channel stereo sound from a single loudspeaker, giving you great sound quality with only one unobtrusive thin-bezel grille showing. This is ideal for small spaces like a dressing area/master closet or a small hallway where installing two separate speakers is impractical.

Dipole/Bipole Switch - Each AZURE 20 series speaker has a convenient front mounted Dipole/Bipole switch which optimizes the speaker for different placement, operation and surroundings.

- **Dipole Mode** - The speaker delivers ambient diffuse sound with minimal localization ideal for surround movie or video soundtracks creating a convincing, immersive three-dimensional surround sound. This *TriVector™* mode is a preferred setting for side channel or rear channel speakers in a 5.1 or 7.1 surround system. The tweeters can be pivoted away from the listening positions to further reduce localization and creates a more diffuse surround effect.
- **Bipole Mode** - This produces a more localizable sound that's generally preferred for music recordings.

Specifications

Model	AZURE AZ620	AZURE AZ820
Applications	Tri-Mode™ Multi-Purpose: 1. Whole House, 2. Surround Sound 3. Dual Voice Coil. Mono, Single Point Stereo or Dipole Surround Sound, Tri-Vector™ Diffuse Dispersion	
Added Features	Dipole/bipole tweeter switch, mono, 2 channel single point stereo mode, or dipole surround. Acoustically optimized horn, reinforced tweeter bridge	
Woofers	6.5" dual 1" voice coil, vented pole piece, humidity-resistant low distortion curved lightweight fiberglass cone, butyl rubber surround	8" dual 1" voice coil, vented pole piece, humidity-resistant low distortion curved lightweight fiberglass cone, butyl rubber surround
Tweeter (LRT = Low Resonance Tweeter)	Dual 3/4" LRT™ coated silk dome wide dispersion 30° pivoting orbital tweeters ferrofluid cooled Neodymium magnets	Dual 1" LRT™ coated silk dome wide dispersion 30° pivoting orbital tweeters ferrofluid cooled Neodymium magnets
Frequency Response	48 - 22kHz, +/-3dB	45 - 22kHz, +/-3dB
Sensitivity	88dB	89dB
Nominal Impedance	2 x 8 ohms, stereo; 1 x 4 ohms, mono	2 x 8 ohms, stereo; 1 x 4 ohms, mono
Recommended Power	10-125 watts RMS per channel	10-150 watts RMS per channel
Crossover	2.7 kHz, Computer optimized 12 db/octave, audiophile components polypropylene capacitors, air core inductors, resettable polyswitch protection circuit	
Cutout Diameter	8" (202mm)	9 5/8" (244mm)
Mounting Depth	4 13/16" (122.24 mm)	5 1/2" (139.7 mm)
Weight	4.7 lbs (2.14 kg)	5.15 lbs. (2.34 kg)
Dimensions	9 3/8 " diameter (238mm)	11 3/16" diameter (284mm)
Magnetic Paintable Thin Bezel Grilles	Yes	Yes
New Construction Kit (optional)	IC-NC-TLC-6	IC-NC-TLC-8
Ceiling Back Box (optional)	IC-BOX-6/8	IC-BOX-6/8
Square Grills (optional)	SQ-GRILLS-6 (10")	SQ-GRILLS-8 (11")

LRT, TriMode, AZURE and TriVector are trademarks of Atlantic Technology.



343 Vanderbilt Ave. Norwood, MA 02062 781.762.6300 www.atlantictechnology.com
 © 2021 Atlantic Technology Atlantic Technology is a registered trademark.

Specifications are subject to change without notice.