



DYNAMIQUE

SEAT MOUNTING STANDARDIZATION KIT

For model years 2015 - 2017

What is a Standardization Kit?

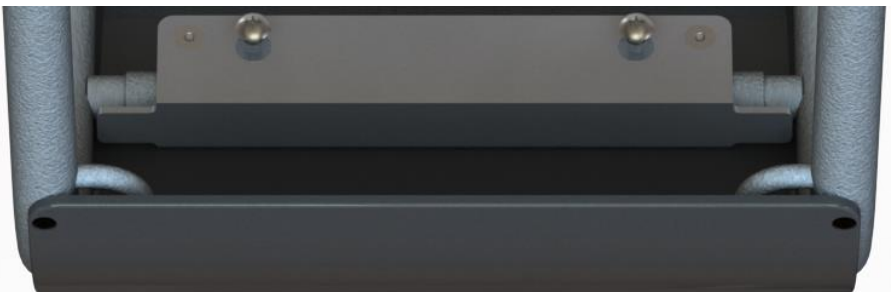
In 2021, we launched our new Fiberglass Clam Shell Seating System! These seats come predrilled for all skis sold 2017+. These frames have Seat Pivots with 6" wide mounting provisions.

Dynamiques from 2015 to 2017 had Seat Pivots with 8" wide mounting provisions. The Standardization Kit aligns these frames to the newer 6". This allows our new fiberglass seats to be used on frames from 2015 to 2017. The kit also includes a drill template for the Co-Poly seats. This allows Co-Poly seats to be used on 2017+ frames. Essentially, with this kit any seat can be used interchangeably on any frame.

The Standardization Kit is an effort to recognize the investment made by our 2015 to 2017 customers. We appreciate your support and this kit allows us to offer continued and superior customer care.



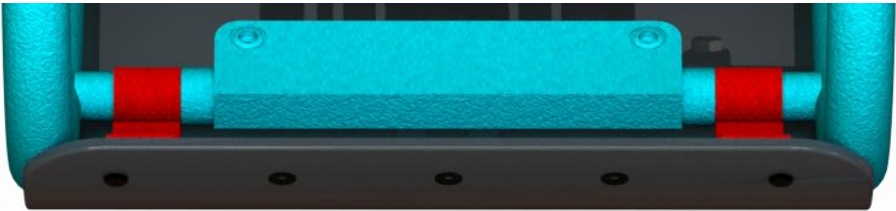
*Above shows a 2015-2017 Seat Pivot with 8" wide mounting provisions.
Below shows an installed Standardization Kit*



Sold dates are generalizations. Please verify your frame with the images above and check that your serial number says DY4.5 or DY4.6

Why did the Seat Pivot mounting width change from 8" to 6"?

It is Enabling Technologies goal to uphold the highest quality and safety in the industry. In 2017, in an effort to improve the safety of our chairlift evacuation system, we moved the evacuation straps to an improved attachment location under the seat. To create room for the evacuation straps, the Seat Pivot mounting width had to be narrowed from 8" to 6" wide.



Above shows a 2017+ Seat Pivot with a 6" wide mounting pattern.

What is the difference between a Standardization Kit and the Repair Kit?

At a similar time to improving our chairlift evacuation system, we learned that using the handles on the side of the seat to pick up a skier can cause welds to crack on the Dynamique's Seat Pivot.

The design was changed moving forwards and customers from 2015 to 2017 were notified with a recall notice. Customers from 2015 to 2017 received a Repair Kit that strengthened the welds by bracing the Seat Mounting Plate.

The Standardization Kit replaces the Repair Kit. It similarly braces those welds, but adds value by simultaneously adding 6" mounting provisions.

Please contact us if you never received a Seat Pivot Repair Kit.

Installing Your Standardization Kit ✓

1) Remove the Seat Liner from the Seat.



2) Unfasten the two sidewalk bolts at the rear of the Seat.

Use a #2 Phillips screwdriver. You can discard the two sidewalk bolts. They will not be reused.



3) Unfasten the two 1/4-20 x 1 7/8" button head bolts at the Seat Dump Bracket.

Shift the ski into the "Up" position to improve access to the bolts and use a 5/32" Allen wrench. Save the two bolts. They will be reused.



4) Remove the Seat from the Frame.

At this step, if your ski does not have a Seat Pivot Repair Kit installed do not proceed. Please see our separate "Seat Pivot Recall Notice & Repair Kit" manual and contact us.



5) Remove the Repair Kit from the frame.

It is easiest to hit the tabs on the ends. Discard the Repair Kit. It will not be reused.



6) Slide Standardization Kit over the Seat Pivot.

Make sure the side with the rivnuts is against the Skid Plate. It is labeled "bottom."



7) Align the holes in the Repair Channel with the rivnuts in the Seat Pivot and check the range of rotation.

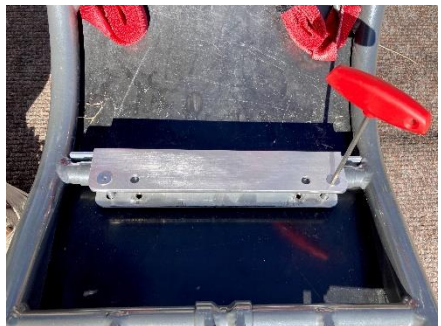
You may need a rubber mallet to fully align the Repair Channel.

It will be limited, but the Seat Pivot should still rotate enough for the adjustable dump feature. If the tabs on the Repair Channel interfere with the welds on the frame, you can file the ends of the tabs down.



9) Fasten the new 1/4-20 x 1 1/4 flat head screws to the 8" wide rivnuts in the frame.

Use a 5/32" Allen Wrench and Loctite Red.



Moving forwards, these flat head bolts should never be removed.

10) Using the Standardization Kit as a guide, drill holes at 6" wide through the frame's Seat Pivot.

Use a 5/16" bit.

Drill slowly and carefully. Only drill through the frame's Seat Pivot. Do not drill down into the rivnuts below on the Standardization Kit.



11) Use the included template to drill out new rear mounting holes in the Co-Poly seat at 6" wide.

Fasten the drill template to the original 8" wide holes in the Co-Poly seat. Use the provided 1/4-20 x 3/4" side walk bolts and 1/4-20 wing nuts.



Using the drill template as a guide, drill two new holes in the Co-Poly seat at 6" wide. Use an F (0.257") size bit.



Remove the drill template from the seat. It is no longer needed. To avoid confusion, the original 8" wide holes in the Co-Poly Seat can be covered with pieces of tape.



Now that you have a Standardization Kit, only the 6" mounting provisions will be used. The 8" holes in seats and frames will never be used again.

12) Reinstall the Seat.

Your frame can now be used with a new Fiberglass Seat or older Co-Poly Seat that has been modified to 6".

Loosely fasten the desired Seat down to the 6" wide rivnuts on the underside of the Standardization Kit. Use the new 1/4-20 x 1 3/4" pan head bolts. From now on these are the only bolts that should be used to mount a seat to this frame.

Fasten the Seat Dump Bracket to the frame using the original 1/4-20 x 1 7/8" button head screws removed in Step 2.

The Seat Dump Bracket may not line up now. If necessary, loosen the sidewalk bolts that fasten the Seat to the Seat Dump Bracket and adjust along the slots.

Return to the two new pan head bolts at the rear of the seat and finish tightening.

8) Reinstall the Seat Liner

Installation is now complete.

Moving forwards, we recommend inspecting the Seat Pivot and Standardization Kit with your periodic maintenance.



**ENABLING
TECHNOLOGIES**

enablingtech.com

Enabling Technologies // 303.578.9345
2200 S Jason St Denver, CO 80223
info@enablingtech.com