

**TAIL** ***MATE***®

*"I won't be a pain on your knees"*



## **Holden Colorado Installation Guide**

1

Unpackage and check the following are in the box

- 1x Tailmate
- 4x screws
- 1x alcohol wipe
- 1x rubber strip
- 1x clear protector film



2

Remove the factory 2 screws on each side of your tailgate plate as per below



3

Using the alcohol surface cleaning wipe, clean along the edge of the tailgate so it is free from any dust or dirt.



Tailgate Edge

**4**

Using the alcohol surface wipe provided clean the edge of your tailgate so that it is free of any dust and dirt

**5**

Then apply the clear film protector along the edge of your tailgate. Trim off any excess that might be left. To make sure the film is nicely applied you can wipe over it with a cloth.



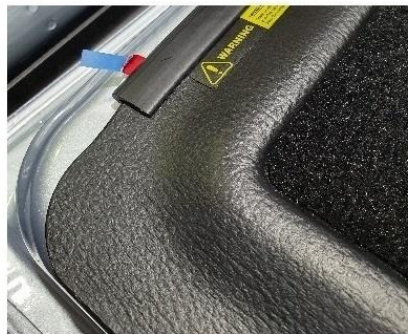


6

Apply the rubber trim on the front edge of your Tailmate as per below.



Carefully peel back one corner of the double sided tape film underneath the rubber strip.



Line up your Tailmate with the factory holes on your tailgate as per below.



7

Fit all 4 screws provided using a phillips head screw driver or cordless drill. To make sure your Tailmate remains aligned whilst installing make sure you fit one screw on each end to keep it in place. Then proceed to fit the remaining two (2) screws



Slowly peel off the double sided tape film all the way across to the other end of the rubber strip.



8

Once you have completely peeled off the film from the double sided tape be sure to press down along the rubber strip to ensure it sticks properly on the tailgate



Your rubber strip on your Tailmate should now look like this



9

Your Tailmate installation is now complete. Enjoy! :)



**⚠ WARNING**

**NEVER FILL FUEL CONTAINERS IN OR ON VEHICLE**

**Static electricity can ignite fuel vapors when filling portable containers. Approved containers must be removed from the vehicle and placed on ground when filling.**



**INSTALLATION MANUAL      TROUBLESHOOTING**

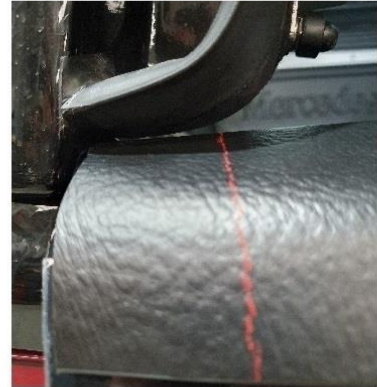
This troubleshooting page will help assist you trimming your Tailmate should an aftermarket canopy be installed on the vehicle and the edges of your Tailmate are slightly touching the bottom edge of the canopy.

Start by marking the edge in which you will need to cut. Use the finishing end of the Tailmate as a guide on how much to cut as per below



mark in line with finished edge

Close the tailgate and check your marking is straight and all the way around the edging of the Tailmate.



In order to cut the edges on both sides you will need to remove the Tailmate.



Re fit the Tailmate back in the rubber strip once you have finished trimming it.

(Please note) the rubber strip on the front edge of the Tailmate can remain on the tailgate and does not need to be removed.

Using a stanley knife clean up any loose bits on the edges you cut.

This is what your Tailmate should look like once it has been trimmed.

