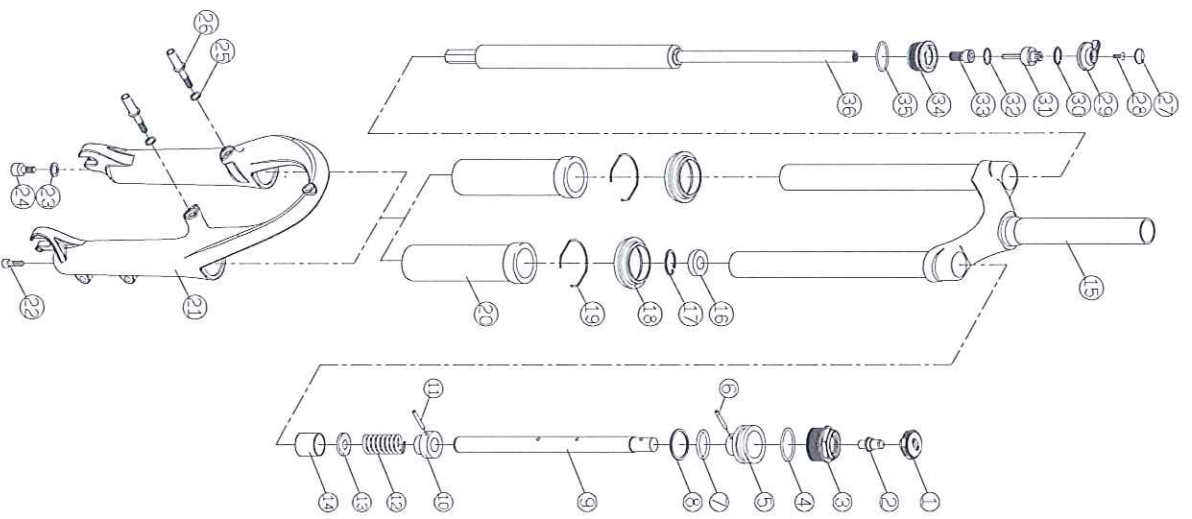


(REV) 項次	(DESCRIPTION) 修改內容	(DATE) 日期	(CHK: BY) 檢核人	(APPROVED) 核准人
△				



Item and P/N	AIR 24 LC	Item and P/N	AIR 20 LC
1 BUTTON CAP	ATCCAR-10	1 BUTTON CAP	ATCCAR-10
2 SCHRADER VALVES	ASAR220-15	2 SCHRADER VALVES	ASAR220-15
3 ISOLATOR TUBE	AOPGR1-38	3 ISOLATOR TUBE	AOPGR1-38
4 O RING	AOR198-61	4 O RING	AOR198-61
5 PISTON	APTGR1-37	5 PISTON	APTGR1-37
6 PIN	APN30A-13	6 PIN	APN30A-13
7 O RING	AOR143X3	7 O RING	AOR143X3
8 WASHER	ACTGR1-55254	8 WASHER	ACTGR1-55254
9 COMPRESSION ROD	ACSGR1-8524 A/L	9 COMPRESSION ROD	ACSGR1-8520 A/L
10 WASHER	ANWGR1-128	10 WASHER	ANWGR1-128
11 PIN	APN558-33	11 PIN	APN558-33
12 SPRING	ASR30A-0844	12 SPRING	ASR30A-0844
13 WASHER	ANWDDC-16-09	13 WASHER	ANWDDC-16-09
14 ISOLATOR TUBE	AEL22X25	14 ISOLATOR TUBE	AEL22X25
15 CSUT	N/A	15 CSUT	N/A
16 END CAP	AEPGR1-28	16 END CAP	AEPGR1-28
17 C RING	ACRF00041R21	17 C RING	ACRF00041R21
18 DUST SEAL	ASLMET-60	18 DUST SEAL	ASLMET-60
19 C RING	ACR288-51A	19 C RING	ACR288-51A
20 BUSHING	ABU288-21A	20 BUSHING	ABU326-32
21 SLIDER	BTGR1-18	21 SLIDER	BTGR2-30
22 BOLT	ABL735-05	22 BOLT	ABL735-05
23 WASHER	AFAR2-10	23 WASHER	AFAR2-10
24 BOLT	ABL P28-17	24 BOLT	ABL P28-17
25 WASHER	API160-15	25 WASHER	API160-15
26 BRAKE PIVOT	API160-09	26 BRAKE PIVOT	API160-09
27 DECAL	ASKP28-18	27 DECAL	ASKP28-18
28 BOLT	ABL P30-06A	28 BOLT	ABL P30-06A
29 BUTTON CAP	ATCGR1-67	29 BUTTON CAP	ATCGR1-67
30 C RING	ACRF00041R17	30 C RING	ACRF00041R17
31 TWIST SLEEVE	AOPP28-05	31 TWIST SLEEVE	AOPP28-05
32 O RING	AORR225-04	32 O RING	AORR225-04
33 BOLT	ABL P28-08	33 BOLT	ABL P28-08
34 TOP CAP	AOPP28-0623	34 TOP CAP	AOPP28-0623
35 O RING	AOR198-61	35 O RING	AOR198-61
36 LOCKOUT CARTRIDGES	AHLGR1-4390	36 LOCKOUT CARTRIDGES	AHLGR1-4320

CSUT: CROWN UPPER TUBE ASSEMBLY

TOLERANCES ARE: XX:±0.5 XX.X:±0.1 XX.XX:±0.01 ANGLES:±0.25		(MATERIAL) 材質 (QTY) 數量 (DATE) 日期	(FINISH) 處理 (UNIT) 單位 (SCALE) 比例	(DESIGN) 設計 (DWN) 繪圖 (CHK) 校正 (APPROVED) 審核	PART NO. 品號 NAME 名稱 DRAWING NO. 圖號		
		1	mm	1:1	陳曉雲	爆炸圖	GR1-120

