

## 7 ½' Colorado Colour-Changing Tree

model no. CTI1515594 | [www.noma.com](http://www.noma.com)

**IMPORTANT:** Please read this manual carefully before assembly and save it for reference.

### INSTRUCTION MANUAL

Thank you for purchasing this Colorado Colour-Changing Tree. This tree assembles in less than one minute and is decorated with LED light sets. For your convenience, it is equipped with a foot pedal switch for changing lighting functions.

This 7 ½' (2.3 m) tree is pre-strung with 500 lights.

### CARTON INCLUDES:

- 3 pre-lighted tree sections (A - Top Section, B - Middle Section, C - Bottom Section)
- 1 sturdy metal tree stand
- 1 screw for tree stand
- 1 power supply cord with foot pedal switch
- 8 extra 3 V replacement LED bulbs
- 1 spare replacement fuse (3 A) for the power plug
- 2 bolts

### FOR INDOOR/SEASONAL USE ONLY

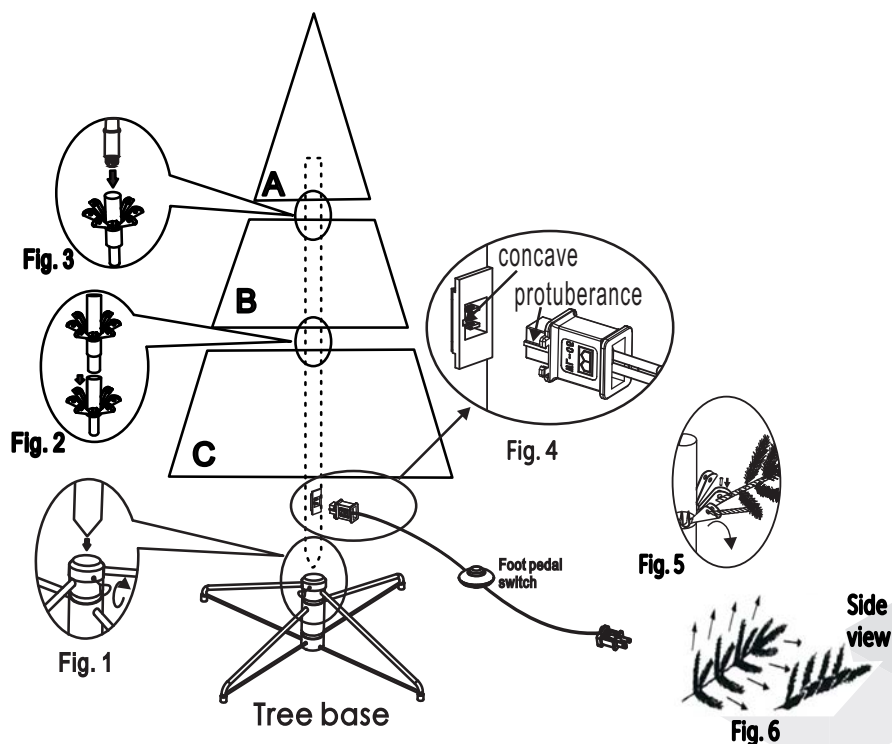
**CAUTION! - ALWAYS UNPLUG YOUR TREE FROM ITS POWER SOURCE BEFORE ASSEMBLING OR DISASSEMBLING.**

### ASSEMBLY:

Note: Before you start to assemble your tree, please choose a location near an electrical wall outlet. Place the tree stand on a level surface.

Please remove protective covers from the base of the pole from each section.

1. Unfold the tree base and insert the screw into the hole.
2. Carefully insert the bottom section (C) of the tree into the tree base and tighten the screws (see Fig. 1).



3. Insert the middle section (B) of the tree into the bottom section (C). (see Fig. 2)
4. Insert the top section (A) into the middle section (B). (see Fig. 3)
5. Insert the end connector of power cord into the plug fixed on the bottom section ( C) and always match the protuberance on the end connector of power cord to the concave on the plug fixed on the bottom section (C) according to the magnified drawing. (see Fig.4)
6. Allow the branches to fall into place or gently pull branches up and out. When adjusting branches be sure that all wires are free of branch hinges (see Fig. 5).
7. Shape the branches. Starting with tips closest to the pole, shape one tip to the right, one to the left and one along the centre of the main stem. Repeat pattern for each branch (see Fig. 6).
8. Plug the well-connected power supply cord from the bottom section (C) into electrical outlet. This tree is Colour Changing, just press the foot pedal switch to change functions. The 8 lighting options available are, Steady Warm White, Flashing Warm White, Slow Fade Warm White, Steady Multi-colour, Flashing Multi-colour, Slow Fade Multi-colour, Sequential Multi-colour & Warm White, Slow Fade Multi-colour & Warm White.

## TROUBLESHOOTING:

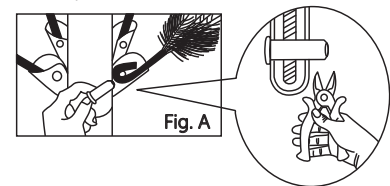
If any lights do not work on your pre-lighted tree, please check the following:

1. If entire tree or a section of the tree does not light:
  - a) Make sure each section of the tree is well connected.
  - b) Check that there is power at the electrical outlet.
  - c) Check fuse in the plug of the power supply cord and replace if necessary (see **Fuse Replacement** below).
2. If a strand of lights still does not work:
  - a) Check that all bulbs are tightly fitted inside the sockets and that no bulbs are broken or missing. Replace any broken or missing bulbs with replacement bulbs provided (see Bulb Replacement below). If all bulbs are firmly in the sockets, slightly twist the bulbs from side to side to ensure proper connection.
  - b) If the lights still do not work, carefully remove each bulb one by one from the problem light string. Pull the bulb AND plastic base straight out of the socket. Do not twist bulbs while removing from sockets. Check the two wires at the bottom of the bulb holder. Each wire should be aligned properly on the bulb holder to ensure a proper connection in the bulb socket. If one wire is missing or too short, please replace bulb with a replacement bulb (provided).

### Loose branches

If a branch of the tree falls off, follow the steps below to reinstall it with a spare bolt.

1. Place the branch into the slot of the bracket.
2. Insert a spare bolt through the hole and use diagonal pliers (not included) to crimp the bolt. (See Fig. A)



## CAUTION! - ALWAYS UNPLUG YOUR TREE FROM ITS POWER SOURCE BEFORE ATTEMPTING BULB AND FUSE REPLACEMENT.

### IMPORTANT SAFETY INSTRUCTIONS

When using electrical products, basic precautions should always be followed including the following:

#### a) READ AND FOLLOW ALL SAFETY INSTRUCTIONS.

- b) Do not use seasonal products outdoors unless marked suitable for indoor and outdoor use. When products are used in outdoor applications, connect the product to a Ground Fault Circuit Interrupting (GFCI) outlet. If one is not provided, contact a qualified electrician for proper installation.
- c) This seasonal use product is not intended for permanent installation or use.
- d) Do not mount or place near gas or electric heaters, fireplace, candles, or other similar sources of heat.
- e) Do not secure the wiring of the product with staples or nails, or place on sharp hooks or nails.
- f) Do not let bulbs rest on the supply cord or on any wire.
- g) Unplug the product when leaving the house, when retiring for the night, or if left unattended.
- h) This is an electrical product-not a toy! To avoid risk of fire, burns, personal injury and electric shock, it should not be played with or placed where small children can reach it.
- i) Do not use this product for other than its intended use.
- j) Do not hang ornaments or other objects from cord, wire, or light string.
- k) Do not close doors or windows on the product or extension cords as this may damage the wire insulation.

- l) This product has overload protection (fuse). A blown fuse indicates an overload or short-circuit situation. If the fuse blows, unplug the product from the outlet. Also unplug any additional strings or products that may be attached to the product. Replace the fuse as per the User Servicing Instructions (follow product marking for proper fuse rating) and check the product. If the replacement fuse blows, a short circuit may be present and the product should be discarded.
- m) Do not cover the product with cloth, paper, or any material not part of the product when in use.
- n) This product has a polarized plug (one blade is wider than the other) as a feature to reduce the risk of electric shock. This plug will fit in a polarized outlet only one way. If the plug does not fit fully in the outlet, reverse the plug. If it still does not fit, contact a qualified electrician. Do not use with an extension cord unless plug can be fully inserted. Do not alter or replace the plug.
- o) This product is equipped with push-in type bulbs. Do not twist bulbs.
- p) Read and follow all instructions that are on the product or provided with the product.

## q) SAVE THESE INSTRUCTIONS.

### Use and care instructions

- a) Before using or reusing, inspect product carefully. Discard any products that have cut, damaged, or frayed wire insulation or cords, cracks in the bulb holders or enclosures, loose connections, or exposed copper wire.
- b) When storing the product, carefully remove the product from wherever it is placed to avoid any undue strain or stress on the product conductors, connections, and wires.

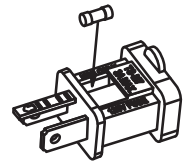
### USER SERVICING INSTRUCTIONS

#### Replace the fuse.

Power supply cord fuse replacement (replaceable 3 A, 125 V fuse is located in the plastic bag):

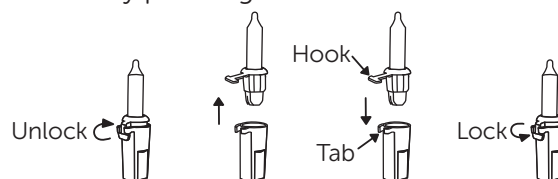
Note: This plug will fit in a polarized outlet only one way. If the plug does not fit fully in the outlet, reverse the plug. If it still does not fit, contact a qualified electrician. Do not use with an extension cord unless plug can be fully inserted. Do not alter or replace the plug.

1. Grasp plug and remove from its power source.
2. Open fuse cover. Slide open fuse access cover on top of attachment plug towards blades.
3. Remove fuse carefully.
4. Risk of fire. Replace fuse only with 3 Amp, 125 Volt fuse (provided with product).
5. Close fuse cover. Slide closed the fuse access cover on top of attachment plug.
6. Risk of fire. Do not replace attachment plug. Contains a safety device (fuse) that should not be removed. Discard product if the attachment plug is damaged.



#### Replace the lamp.

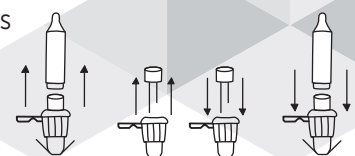
1. Grasp plug and remove from the receptacle or other outlet device. Do not unplug by pulling on cord.
2. Unlock the burned out LED bulb by lifting the hook.
3. Pull bulb and plastic base straight out of bulb holder.
4. Replace bulb with only 3.0 Volt, 20 mA push-in type LED bulb (provided with product). Always match the hook to the tab.
5. Lock the hook of bulb base by pushing lock down into the tab.



**CAUTION:** 1. To reduce the risk of overheating, replace burned-out bulbs promptly. Use 3.0 Volt, 20 mA LED bulbs only. The LED bulb has polarity. Do not deliberately change the direction of the LED bulb in the bulb holder. 2. Risk of fire. This product does not contain bulb shunts, which allow the product to operate if one bulb burns out. Replace bulbs only with the spare bulbs provided with this product.

If the bulb base of the replacement bulb does not fit in the string: (as shown below by the Figs.)

- a) Pull the reflector out.
- b) Remove the base of burned-out bulb by straightening bulb wires and gently pull bulb out.
- c) Thread wires of new bulb through holes in old base with one wire in each hole.
- d) After bulb is fully inserted into base, bend each wire up, like other bulbs in the light set so that the wires will touch the contacts inside the bulb holder (always match the long wire of new bulb to the hook of bulb base).
- e) Insert the reflector into the base.



## Federal Communications Commission (FCC) Statement

This device complies with Part 15 of the FCC Rules. Operation is subject to the following two conditions: (1) This device may not cause harmful interference, and (2) this device must accept any interference received, including interference that may cause undesired operation.

**CAUTION:** Changes or modifications not expressly approved by the party responsible for compliance could void the user's authority to operate the equipment.

**NOTE:** This equipment has been tested and found to comply with the limits for a Class B digital device, pursuant to Part 15 of the FCC Rules. These limits are designed to provide reasonable protection against harmful interference in a residential installation. This equipment generates, uses and can radiate radio frequency energy and, if not installed and used in accordance with the instructions, may cause harmful interference to radio communications.

However, there is no guarantee that interference will not occur in a particular installation. If this equipment does cause harmful interference to radio or television reception, which can be determined by turning the equipment off and on, the user is encouraged to try to correct the interference by one or more of the following measures:

- Reorient or relocate the receiving antenna.
- Increase the separation between the equipment and receiver.
- Connect the equipment into an outlet on a circuit different from that to which the receiver is connected.
- Consult the dealer or an experienced radio/TV technician for help.

Model No. TME7.5-6(0.4)

FOR INDOOR USE ONLY

**STORAGE:** Disassembled tree can be stored in its original box. Store tree in a cool dry place where the temperature does not exceed 100°F (38°C).

### Limited 1-year Warranty

This NOMA product carries a one (1) year warranty against defects in workmanship and materials. NOMA agrees to replace a defective product, within the stated warranty period, when returned to the place of purchase with proof of purchase. This product is not guaranteed against wear or breakage due to misuse and/or abuse.

**Made in China**

Imported by

**CTC Triangle (USA) LLC, 14000 24th Street E, Sumner, WA, USA 98390**

