

6 ½' LIGHTED HUDSON SPRUCE TREE

model no. CTI1516347 | www.noma.com

IMPORTANT: Please read this manual carefully before assembly and save it for reference.

INSTRUCTION MANUAL

Thank you for purchasing this Lighted Hudson Spruce Tree. This tree assembles in minutes and is decorated with energy saving LED light sets.

This 6 ½' (2 m) tree is pre-strung with 300 lights.

CARTON INCLUDES:

- 3 pre-lighted tree sections (A - Top Section, B - Middle Section, C - Bottom Section)
- 1 sturdy metal tree stand
- 1 screw for tree stand
- 6 extra 3.0 V LED replacement bulbs
- 3 spare 3 A fuses for LED light string
- 1 spare 5 A replacement fuse for extension cord-note: fuse is already in extension cord plug; slide access panel to open (see Fuse Replacement below)
- 2 bolts

FOR INDOOR/SEASONAL USE ONLY

CAUTION! ALWAYS UNPLUG YOUR TREE FROM ITS POWER SOURCE BEFORE ASSEMBLING OR DISASSEMBLING.

Please locate the plug and socket first before assembling each sections of the tree.

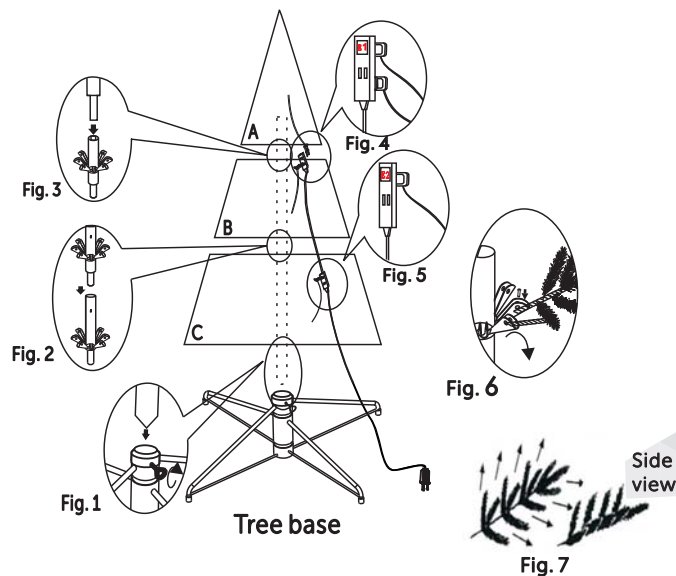
ASSEMBLY:

Note: Before you start to assemble your tree, please choose a location near an electrical wall outlet. Place the tree base on a level surface.

Please remove protective covers from the base of the pole from each section.

1. Carefully insert bottom section (C) of tree into tree base. Make sure pole is firmly inserted into the tree base and screw is tightened. Insert middle section (B) of tree into bottom section (C). Insert the top section (A) into the middle section (B) (Fig. 1, 2, 3).
2. Locate light set plug from top section (A) and plug into outlet of extension cord mounted in section B (Fig. 4).

IMPORTANT: Do not remove the tape wrapped around the outlets of the extension cord mounted in section (B). Any outlets you need to plug into are not wrapped in tape.



3. Extension cord mounted in middle section (B) hangs freely down into bottom section (C). Position cord as near to pole as possible.
4. Locate light set plug from bottom section (C) and plug into outlet of extension cord hanging down from middle section (B) (Fig. 5).
5. Allow branches to fall into place or gently pull branches up and out. When adjusting branches be sure that all wires are free of branch hinges (Fig. 6).
6. Shape the branches. Starting with tips closest to the pole, shape one tip to the right, one to the left and one at the centre of the main stem. Repeat pattern for each branch (Fig. 7).
7. Connect the plug of the extension cord hanging down from bottom section (C) to the wall outlet.

TROUBLESHOOTING:

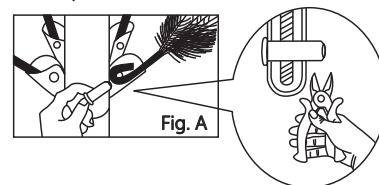
If any lights do not work on your pre-lighted tree, please check the following:

1. If entire tree or a section of the tree does not light:
 - a) Check to be sure that all light set plugs are securely connected to the extension cord.
 - b) Check that there is power at the electrical outlet.
 - c) Check fuses in tree's plugs and replace if necessary (see Fuse Replacement below).
2. If a strand of lights still does not work:
 - a) Check that all bulbs are tightly fitted inside the sockets and that no bulbs are broken or missing. Replace any broken or missing bulbs with replacement bulbs provided (see Bulb Replacement below). If all bulbs are firmly in the sockets, slightly twist the bulbs from side to side to ensure proper connection.
 - b) If the lights still do not work, carefully remove each bulb one by one from the problem light string. Pull the bulb AND plastic base straight out of the socket. Do not twist bulbs while removing from sockets. Check the two wires at the bottom of the bulb holder. Each wire should be aligned properly on the bulb holder to ensure a proper connection in the bulb socket. If one wire is missing or too short, please replace bulb with a replacement bulb (provided).

Loose branches

If a branch of the tree falls off, follow the steps below to reinstall it with a spare bolt.

1. Place the branch into the slot of the bracket.
2. Insert a spare bolt through the hole and use diagonal pliers (not included) to crimp the bolt. (See Fig. A)



CAUTION! - ALWAYS UNPLUG YOUR TREE FROM ITS POWER SOURCE BEFORE ATTEMPTING EITHER FUSE OR BULB REPLACEMENT.

IMPORTANT SAFETY INSTRUCTIONS

When using electrical products, basic precautions should always be followed including the following:

- a) READ AND FOLLOW ALL SAFETY INSTRUCTIONS**
- b) Do not use seasonal products outdoors unless marked suitable for indoor and outdoor use. When products are used in outdoor applications, connect the product to a Ground Fault Circuit Interrupting (GFCI) outlet. If one is not provided, contact a qualified electrician for proper installation.
- c) This seasonal use product is not intended for permanent installation or use.
- d) Do not mount or place near gas or electric heaters, fireplaces, candles or other similar sources of heat.
- e) Do not secure the wiring of the product with staples or nails, or place on sharp hooks or nails.
- f) Do not let bulbs rest on the supply cord or on any wire.
- g) Unplug the product when leaving the house, when retiring for the night, or if leaving unattended.
- h) This is an electric product - not a toy! To avoid risk of fire, burns, personal injury and electric shock, it should not be played with or placed where small children can reach it.
 - i) Do not use this product for other than its intended use.
 - j) Do not hang ornaments or other objects from cord, wire, or light string.
 - k) Do not close doors or windows on the product or extension cords as this may damage the wire insulation.
 - l) Do not cover the product with cloth, paper, or any material not part of the product when in use.
- m) This product has a polarized plug (one blade is wider than the other) as a feature to reduce the risk of electric shock. This plug will fit in a polarized outlet only one way. If the plug does not fit fully in the outlet, reverse the plug. If it still does not fit, contact a qualified electrician. Do not use with an extension cord unless plug can be fully inserted. Do not alter or replace the plug.
- n) This product is equipped with push-in type bulbs. Do not twist bulbs.

- o) This product employs overload protection (fuse). A blown fuse indicates an overload or short-circuit situation. If the fuse blows, unplug the product from the outlet. Also unplug any additional strings or products that may be attached to the product. Replace the fuse as per the user servicing instructions (follow product marking for proper fuse rating) and check the product. If the replacement fuse blows, a short circuit may be present and the product should be discarded.
- p) Read and follow all instructions that are on the product or provided with the product.
- q) 120 V. For indoor use only.

SAVE THESE INSTRUCTIONS

Use and care instructions

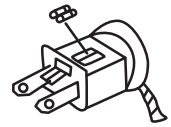
- a) Before using or reusing, inspect product carefully. Discard any products that have cut, damaged, or frayed wire insulation or cords, cracks in the bulb holders or enclosures, loose connections, or exposed copper wire.
- b) When storing the product, carefully remove the product from wherever it is placed to avoid any undue strain or stress on the product conductors, connections, and wires.

USER SERVICING INSTRUCTIONS

Replace the fuse.

A) Light set fuse replacement (replaceable 3 A, 125 V fuses)

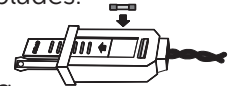
1. Grasp plug and remove from the receptacle or other outlet device. Do not unplug by pulling on cord.
2. Open fuse cover. Slide open fuse access cover on top of attachment plug towards blades.
3. Remove fuse carefully.
4. Risk of fire. Replace fuse only with 3 Amp, 125 Volt fuse (provided with product).
5. Close fuse cover. Slide closed the fuse access cover on top of attachment plug.
6. Risk of fire. Do not replace attachment plug. Contains a safety device (fuse) that should not be removed. Discard product if the attachment plug is damaged.



B) Extension cord fuse replacement (1 replaceable 5 A, 125 V fuse is located in the plug):

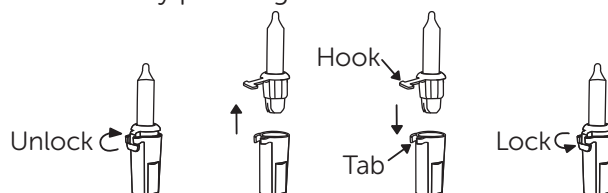
Note: This plug will fit in a polarized outlet only one way. If the plug does not fit fully in the outlet, reverse the plug. If it still does not fit, contact a qualified electrician. Do not use with an extension cord unless plug can be fully inserted. Do not alter or replace the plug.

1. Grasp plug and remove from the receptacle or other outlet device. Do not unplug by pulling on cord.
2. Open fuse cover. Slide open fuse access cover on top of attachment plug towards blades.
3. Remove fuse carefully.
4. Risk of fire. Replace fuse only with 5 Amp, 125 Volt fuse.
5. Close fuse cover. Slide closed the fuse access cover on top of attachment plug.
6. Risk of fire. Do not replace attachment plug. Contains a safety device (fuse) that should not be removed. Discard product if the attachment plug is damaged.



Replace the lamp.

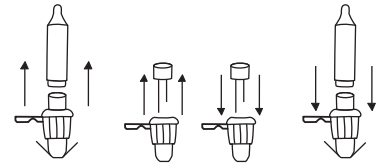
1. Grasp plug and remove from the receptacle or other outlet device. Do not unplug by pulling on cord.
2. Unlock the burned out LED bulb by lifting the hook.
3. Pull bulb and plastic base straight out of bulb holder.
4. Replace bulb with only 3.0 Volt, 20 mA push-in type LED bulb (provided with product). Always match the hook to the tab.
5. Lock the hook of bulb base by pushing lock down into the tab.



CAUTION: 1. To reduce the risk of overheating, replace burned-out bulbs promptly. Use 3.0 Volt, 20 mA LED bulbs only. The LED bulb has polarity. Do not deliberately change the direction of the LED bulb in the bulb holder. 2. Risk of fire. This product does not contain bulb shunts, which allow the product to operate if one bulb burns out. Replace bulbs only with the spare bulbs provided with this product.

If the bulb base of the replacement bulb does not fit in the string: (as shown below by the Figs.)

- a) Pull the reflector out.
- b) Remove the base of burned-out bulb by straightening bulb wires and gently pull bulb out.
- c) Thread wires of new bulb through holes in old base with one wire in each hole.
- d) After bulb is fully inserted into base, bend each wire up, like other bulbs in the light set so that the wires will touch the contacts inside the bulb holder (always match the long wire of new bulb to the hook of bulb base).



- e) Insert the reflector into the base.

Model No. TE6.5-3(0.24)
FOR INDOOR USE ONLY

STORAGE: Disassembled tree can be stored in its original box. Store tree in a cool dry place where the temperature does not exceed 100°F (38°C).

Limited 1-year Warranty

This NOMA product carries a one (1) year warranty against defects in workmanship and materials. NOMA agrees to replace a defective product, within the stated warranty period, when returned to the place of purchase with proof of purchase. This product is not guaranteed against wear or breakage due to misuse and/or abuse.

Made in China
Imported by

CTC Triangle (USA) LLC, 14000 24th Street E, Sumner, WA, USA 98390

