



Instruction Manual
For indoor and outdoor use
Retain carton for storage purposes

IMPORTANT SAFETY INSTRUCTIONS

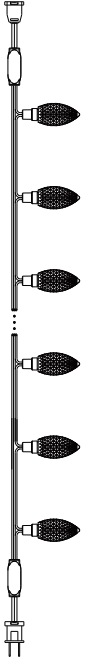
When using electrical products, basic precautions should always be followed including the following:

Model No.	Voltage	Amps	Wattage	Max. Connection	Model No.	Voltage	Amps	Wattage	Max. Connection
CTI1510787	120 V AC	0.02 A	2.4 W	90 sets	CTI1513380	120 V AC	0.02 A	2.4 W	90 sets
CTI1513382	120 V AC	0.02 A	2.4 W	90 sets	CTI1513680	120 V AC	0.02 A	2.4 W	90 sets
CTI1510785	120 V AC	0.02 A	2.4 W	90 sets	CTI1513681	120 V AC	0.02 A	2.4 W	90 sets
CTI1510786	120 V AC	0.02 A	2.4 W	90 sets	CTI1513682	120 V AC	0.02 A	2.4 W	90 sets
CTI1513684	120 V AC	0.02 A	2.4 W	90 sets	CTI1513685	120 V AC	0.02 A	2.4 W	90 sets
CTI1513686	120 V AC	0.02 A	2.4 W	90 sets	CTI1513687	120 V AC	0.02 A	2.4 W	90 sets
CTI1513381	120 V AC	0.02 A	2.4 W	90 sets	CTI1513688	120 V AC	0.02 A	2.4 W	90 sets
CTI1513721	120 V AC	0.02 A	2.4 W	90 sets					

www.noma.com

This instruction sheet pertains to the following light string models:
(Refer to cord tag for the model number of your product)

I1-25-1-C9 I1-24-1-C9



READ AND FOLLOW ALL SAFETY INSTRUCTIONS

- Do not use seasonal products outdoors unless marked suitable for indoor and outdoor use. When products are used in outdoor applications, connect the product to a Ground Fault Circuit Interrupting (GFCI) outlet. If one is not provided, contact a qualified electrician for proper installation.
- For temporary (90 days max) installation and use only. This seasonal-use product is not intended for permanent installation or use.
- Do not mount or place near gas or electric heaters, fireplaces, candles or other similar sources of heat.
- Do not secure the wiring of the product with staples or nails, or place on sharp hooks or nails.
- Do not let lamps rest on the supply cord or on any wire.
- Unplug the product when leaving the house, or when retiring for the night, or if left unattended.
- This is an electrical product – not a toy! To avoid risk of fire, burns, personal injury and electric shock it should not be played with or placed where small children can reach it.
- Do not use this product for other than its intended use.
- Do not hang ornaments or other objects from cord, wire, or light string.
- Do not close doors or windows on the product or extension cords as this may damage the wire insulation.
- Do not cover the product with cloth, paper or any material not part of the product when in use.
- This product is equipped with non-shunted type LED lamps. Do not twist or attempt to remove lamps.
- This product employs overload protection (fuse). A blown fuse indicates an overload or short-circuit situation. If the fuse blows, unplug the product from the outlet. Also unplug any additional strings or products that may be attached to the product. Replace the fuse as per user-servicing instructions (follow product marking for proper fuse rating) and check the product. If the replacement fuse blows, a short-circuit may be present and the product should be discarded.
- Read and follow all instructions that are on the product or provided with the product.

SAVE THESE INSTRUCTIONS

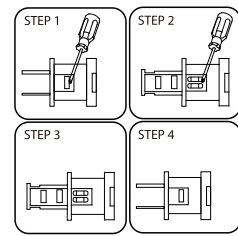
⚠ CAUTION: To reduce the risk of fire and electric shock:

- Do not install on trees having needles, leaves, or branch coverings of metal or materials that look like metal.
- Do not mount or support strings in a manner that can cut or damage wire insulation.

USER-SERVICING INSTRUCTIONS SAFETY PLUG WITH REPLACEABLE FUSE

Risk of fire. Do not replace attached plug. Discard product if the attached plug is damaged. Product contains a safety device (fuse). Product should not be used if safety device (fuse) is removed.

- Always unplug product from the receptacle or other outlet device before installing or replacing fuse.
- Grasp plug to remove from receptacle or other outlet device. Do not unplug by pulling on cord.
- To open fuse cover, slide open fuse access cover on top of plug, towards the blades.
- Remove fuses carefully by turning plug over.
- Risk of fire. Replace fuse only with 3 A, 125 V fuse (provided with product).
- To close the fuse cover, slide back into place. Check to verify the fuse access cover on top of plug is securely closed.



Step 1: Take the fuse box cover off the plug.
Step 2: Take out the fuse.
Step 3: Put in a new fuse.
Step 4: Put the fuse box cover back on.

Usage of Clip Light (Apply to Clip Light items ONLY)

- Open a clip which go with string light, close the clip on the position you chose.
- Attach the clips to shingles, eavestroughs/gutters, or tree branches. Ensure the clips are secure to prevent the lights from falling down.

USE AND CARE INSTRUCTIONS

- When the product is placed on a tree, the tree should be well maintained and fresh. Do not place on live trees in which the needles are brown or break off easily. Keep the tree holder filled with water.
- If the product is placed on a tree, the tree should be well secured and stable.
- Before using or reusing, inspect product carefully. Discard any products that have cut, damaged, or frayed wire insulation or cords, cracks in the lampholders or enclosures, loose connections, or exposed copper wire.
- When storing the product, carefully remove the product from wherever it is placed, including trees, branches, or bushes, to avoid any undue strain or stress on the product conductors, connections, and wires.
- When not in use, store neatly in a cool, dry location protected from sunlight.

Connecting Sets End to End

(For Connecting Multiple Products) When multiple products are connected together, do not exceed the lowest of the indicated maximum wattage on the cord tag near the connected product's receptacle.

⚠ CAUTION: Do not overload. This product is rated 2.4 W. Connect other decorative lighting products of the same type end-to-end up to a maximum of 216 W total.

If connecting to a lighting string that does not have a wattage(W) rating (found on the tag within 6" (15.24cm) of the plug), calculate the wattage(W) as follows: multiply the current(A) which is on the flag type label located within 6"(15.24cm) of the plug, by 120. For example, if the string is rated 120V, 60Hz, 0.02A: 0.02 x 120= 2.4W.

Total amount of wattage that can be connected: 216W-2.4W=213.6W.

This product carries a three (3) year warranty against defects in workmanship and materials. Noma agrees to replace a defective product, within the stated warranty period, when returned to the place of purchase with proof of purchase. This product is not guaranteed against wear or breakage due to misuse and/or abuse.

SAVE THESE INSTRUCTIONS

UL File: E 254175
Product specifications
subject to change
Made In China
Imported by CTC Triangle
(USA) LLC. 14000 24th
Street E, Sumner,
WA, USA 98390.

Instructions

Caution

Warranty