

NOMA[®]**C9 LED 25L Red/Green without Rectifier**

Instruction Manual
For indoor and outdoor use
Retain carton for storage purposes

model no. CT11513843

www.noma.com**IMPORTANT:** Please read this manual carefully before assembly and save it for reference.

IMPORTANT SAFETY INSTRUCTIONS

When using electrical products, basic precautions should always be followed including the following:

- READ AND FOLLOW ALL SAFETY INSTRUCTIONS.**
- Do not use seasonal products outdoors unless marked suitable for indoor and outdoor use. When products are used in outdoor applications, connect the product to a Ground Fault Circuit Interrupting (GFCI) outlet. If one is not provided, contact a qualified electrician for proper installation.
- This seasonal-use product is not intended for permanent installation or use.
- Do not mount or place near gas or electric heaters, fireplaces, candles or other similar sources of heat.
- Do not secure the wiring of the product with staples or nails, or place on sharp hooks or nails.
- Do not let lamps rest on the supply cord or on any wire.
- Unplug the product when leaving the house, or when retiring for the night, or if left unattended.
- This is an electric product—not a toy! To avoid risk of fire, burns, personal injury and electric shock it should not be played with or placed where small children can reach it.
- Do not use this product for anything other than its intended use.
- Do not hang ornaments or other objects from cord, wire, or light string.
- Do not close doors or windows on the product or extension cords as this may damage the wire insulation.
- Do not cover the product with cloth, paper or any material not part of the product when in use.
- This product is equipped with push-in type lamps. Do not twist lamps.
- This product employs overload protection (fuse). A blown fuse indicates an overload or short-circuit situation. If the fuse blows, unplug the product from the outlet. Also unplug any additional strings or products that may be attached to the product. Replace the fuse as per the user servicing instructions (follow product marking for proper fuse rating) and check the product. If the replacement fuse blows, a short-circuit may be present and the product should be discarded.
- Read and follow all instructions that are on the product or provided with the product.

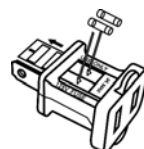
SAVE THESE INSTRUCTIONS USE AND CARE INSTRUCTIONS

- When the product is placed on a live tree, the tree should be well maintained and fresh. Do not place on live trees in which the needles are brown or break off easily. Keep the live tree holder filled with water.
- If the product is placed on a tree, the tree should be well secured and stable.
- Before using or reusing, inspect product carefully. Discard any products that have cut, damaged, or frayed wire insulation or cords, cracks in the lamp holders or enclosures, loose connections, or exposed copper wire.
- When storing the product, carefully remove the product from wherever it is placed, including trees, branches, or bushes, to avoid any undue strain or stress on the product conductors, connections, and wires.
- When not in use, store neatly in a cool, dry location protected from sunlight.
- The LED lamp has polarity. Do not deliberately change the direction of the LED lamp in the lamp holder.
- When multiple products are connected together, do not exceed the lowest of the indicated maximum wattage on the cord tag near the connected product's receptacle.

USER SERVICING INSTRUCTIONS

To replace the fuse:

- Grasp plug and remove from the receptacle or other outlet device. Do not unplug by pulling on cord.
- Open fuse cover. Slide open fuse access cover on top of attachment plug towards blades.
- Remove fuse carefully. Turn plug over to remove fuse.
- Risk of fire. Replace fuse only with 3 A, 125 V fuse (provided with product).
- Close fuse cover. Slide closed the fuse access cover on top of the attachment plug.
- Risk of fire. Do not replace the attachment plug. Contains a safety device (fuse) that should not be removed. Discard product if the attachment plug is damaged.



To replace a lamp:

- Grasp plug and remove from the receptacle or other outlet device. Do not unplug by pulling on the cord.
- pull lamp and plastic base straight out of lamp holder as shown in Fig. 1.
- Insert the spare LED lamp into the lamp holder in correct direction.
- Replace lamp with only 3.4 V, 20 mA LED type lamp (provided with product).

CAUTION:

- Do not exchange the lamp base on the new lamp with the old one or the LED wires may break.
- Pull lamp and plastic base straight out of the lamp holder.
- Do not deliberately change the direction of the LED lamp in the lamp holder.

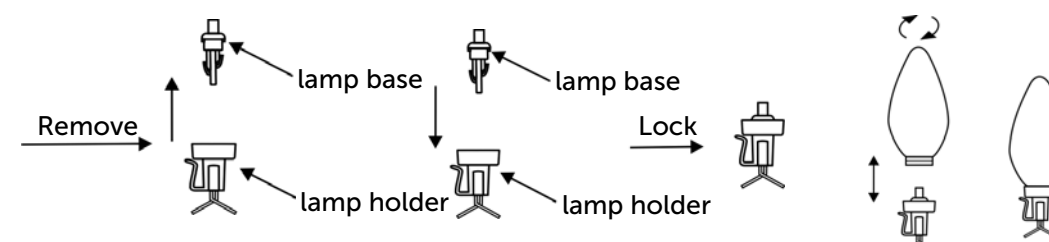


Fig. 1 Remove the burned-out lamp

Fig. 2 Replace with the spare lamp

CAUTION:

Connecting Sets End to End (for connecting multiple products)

When multiple products are connected together, do not exceed the lowest of the indicated maximum wattage on the cord tag near the connected product's receptacle. Do not overload. This product is rated 2.4 W. Connect other decorative lighting products of the same type end-to-end up to a maximum of 216 W total.

If connecting to a lighting string that does not have a wattage (W) rating (found on the tag within 6" (15.24 cm) of the plug), calculate the wattage (W) as follows: multiply the current (A) which is on the flag type label located within 6" (15.24 cm) of the plug, by 120. For example, if the string is rated 120 V, 60 Hz, 0.02 A: $0.02 \times 120 = 2.4$ W.

Total amount of wattage that can be connected: $216 \text{ W} - 2.4 \text{ W} = 213.6 \text{ W}$

CAUTION:

- Risk of fire. This product does not contain lamp shunts, which allow the product to operate if one lamp burns out. Replace lamps only with the spare lamps provided with this product.
- To reduce the risk of overheating, replace burned-out lamps promptly. Use 3.4 V, 20 mA lamps only.

CAUTION: To reduce the risk of fire and electric shock: a) do not install on trees having needles, leaves or branch coverings of metal or materials which look like metal, and b) do not mount or support wires in a manner that can cut or damage wire insulation.

UL MODEL NO. TY-B-25L/1W-C9
FOR INDOOR AND OUTDOOR USE

Warranty

This Noma product carries a three (3) year warranty against defects in workmanship and materials. Noma agrees to replace a defective product, within the stated warranty period, when returned to the place of purchase with proof of purchase. This product is not guaranteed against wear or breakage due to misuse and/or abuse.

MADE IN CHINA

Imported by Golden Viking Sports, LLC. Sumner, WA USA 98390.