

# INSTRUCTION MANUAL



## ENGINE WATER PUMP

**KM0404102**



**WARNING:**

Please read this manual carefully before using this equipment

# SPECIFICATION

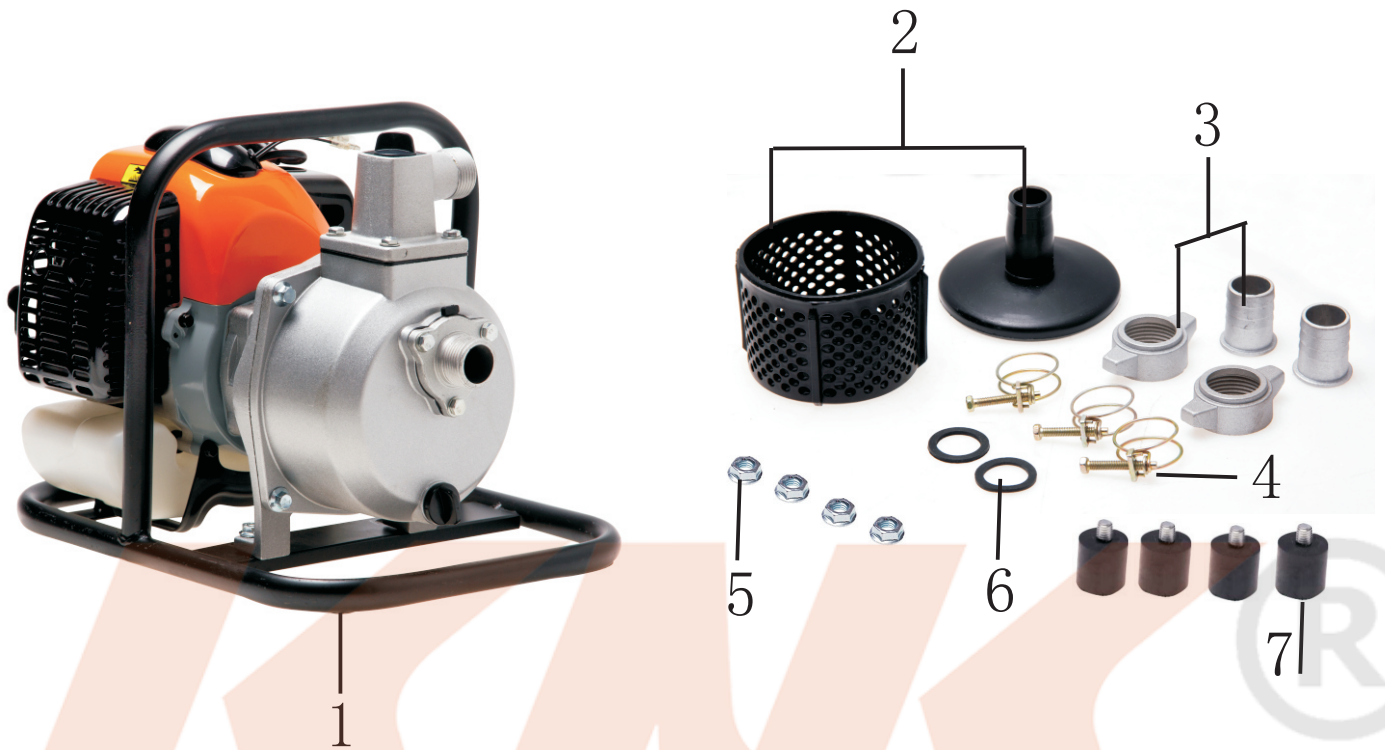
Pump part	Model:	KM0404102
	Connecting Dia.:	1"
	Delivery Volume m <sup>3</sup> /h :	6
	Total Head:	22
	Mmaximum Elevation (m)	6
Engine part	Model:	1E40F-5
	Type:	2 strokes, single cylinder, air cooled
	Power(kw/rpm)	1.1/6000
	Displacement(cc)	42,7
	Type of fuel:	mixture of oil and gasoline(30:1)
	Fuel tank capacity(L)	1,2
	Start system	Recoil
	Sound power level (dB(A))	≤104
Package	Weight(kg)	9
	Carton dimensions (mm):	390x310x345



## GENERAL SAFETY

1. DO not use in house
2. DO not smoke by machine
3. Keep inflammable material away
4. Stop engine when refueling , don't let fuel spill out
5. The temperature of water which is gonna be transport should less than 40 C °
6. Gasoline engine should be steady operate at normal temperature (268-313K), Atmospheric pressure ≤89. 8 Kpa . relative humidity ≤60%
7. Water pump set be steady at 10 pèrpendicularity or level operation

## ARTICLE IN CARTON



- 1.Engine and pump
- 3.Pipe connector
- 5.Nut
- 7.Rubber cushion

- 2.Water filter
- 4.Clamp
- 6.O ring

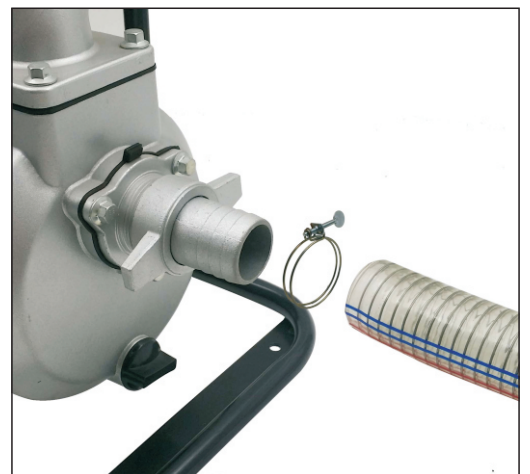
## How to assemble



1.Mount rubber cushion



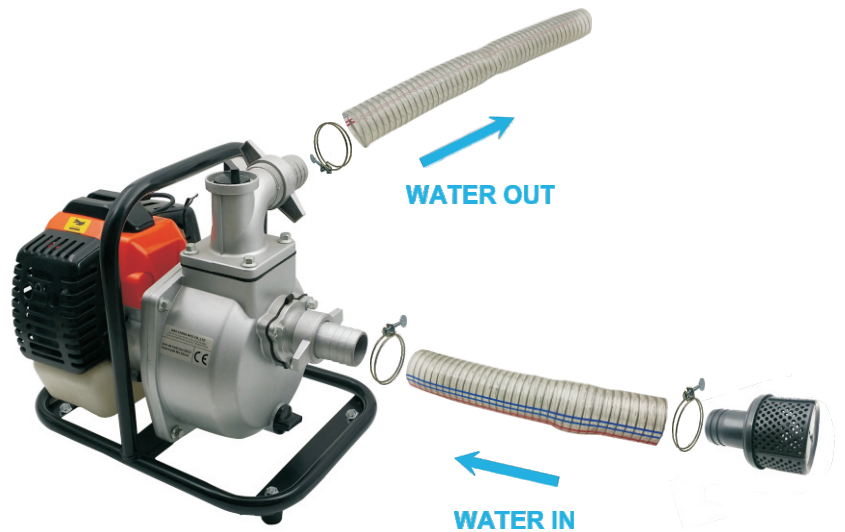
2.Assemble pipe connector



3.Assemble water pipe



4. Assemble water filter



## How to Use



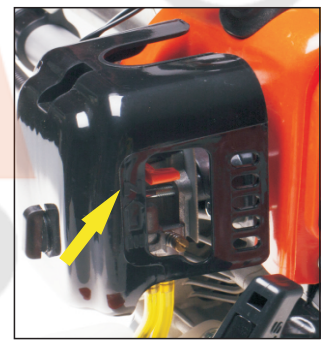
1. Unscrew cap and pour water into pump. **The water level must be over mechanical seal, had better fill pump**



2. Add mixed fuel  
Mixture rate 25:1



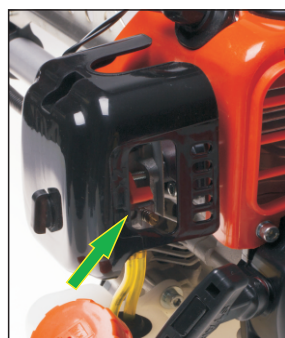
3. Press primer bulb 5 times



4. Set choke rod at "I" position  
(Mark could be "OFF")



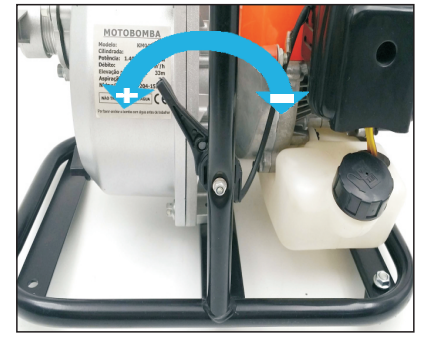
5. Pull starter until ignition voice occur



6. Set choke rod at "II" position  
(Mark could be "ON")



5. Pull starter again engine will be started



6. Adjust throttle switch to speed up engine



7. Pin the red button until engine totally stopped

### NOTICE:

1. Fill pump with water before starting, do not let pump running dry
2. Do not use pure gasoline, use mixed gasoline, the rate is 25:1
3. Do not speed up engine immediately after starting, let engine run at idle speed for 5 min. then speed up engine gently, don't be abruptly (Especially for new machine)
4. Do not let engine run at full speed, set engine running at proper speed
5. Do not stop engine at high speed, please slow down engine to idle speed and let engine run for 3 min. then pin red button (Not just single click) until engine totally stopped



## Periodic Maintenance

Every 50 hours



1. Clean up accumulated carbon of spark plug, adjust gap to 0.6-0.7mm



2. Replace fuel filter with new one



3. Clean up air filter with Kerosene and dry it up



4. Clean up accumulated carbon of muffler

## Trouble Shooting

A. Engine can't start:

1. The fuel mixture rate is too thick
2. Fuel filter is blocked by dust
3. Air check valve in fuel tank cap is blocked
4. Spark plug have too much accumulated carbon
5. Engine have leakage , Especially check crank case oil seal and joint of carburetor with intake pipe

B. Pump does not pumping water

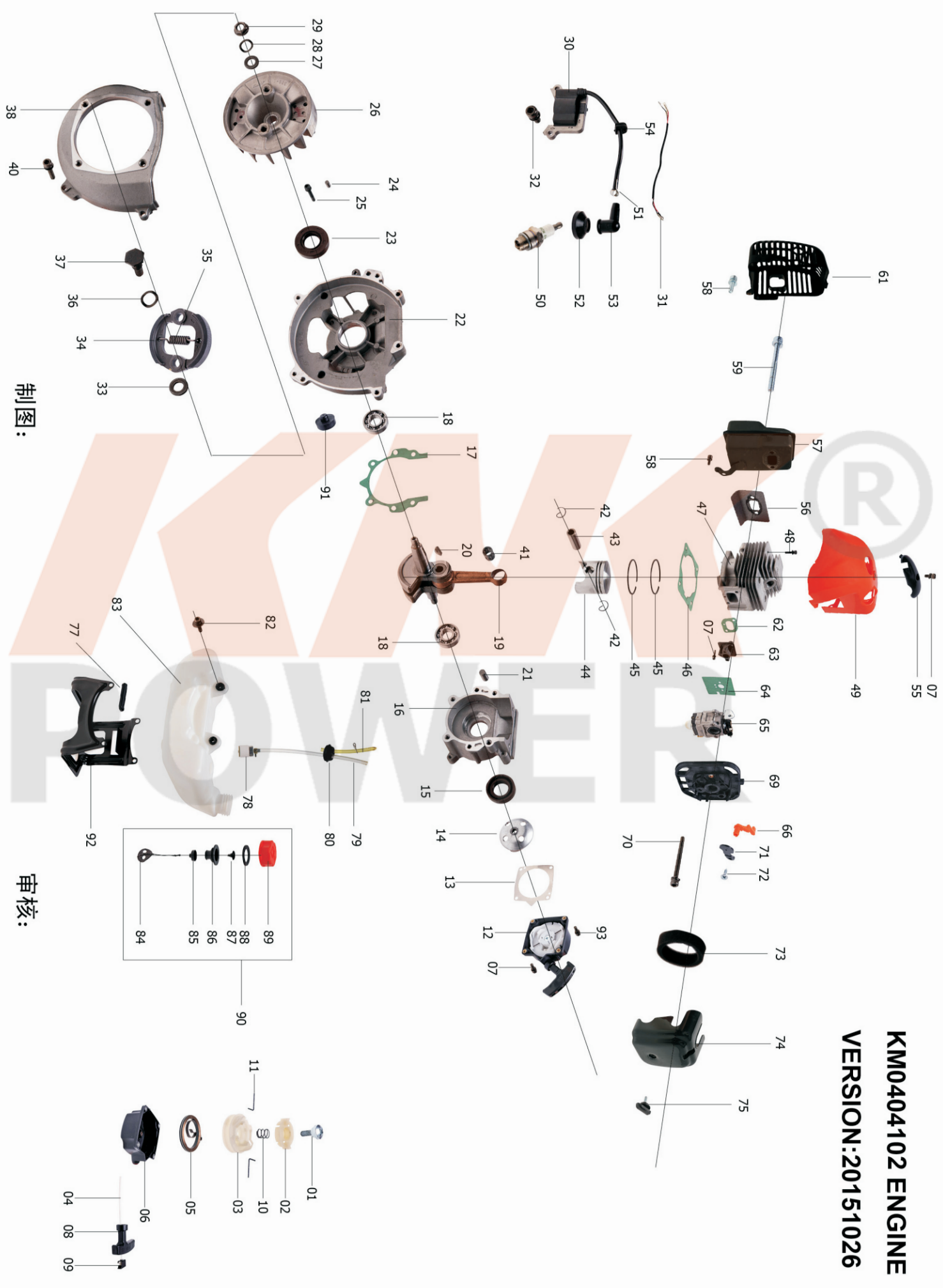
1. Pump body lack of priming water
2. Water filter is blocked by sludge
3. Clamp ring is not clamping hose tight enough
4. Hose have breakage

## Storage

If you intend to store water pump for long time , please do it as following:

1. Drain fuel from fuel tank , due to there still have fuel in carburetor , engine can still be started , please start engine , let engine run at idle speed till engine stopped automatically (fuel in carburetor is ran out) .
2. Take down spark plug , and pour some oil into cylinder pull starter , let oil smear on cylinder inner surface
3. Clean up machine .Place machine in dry and ventilate area

# KM0404102 ENGINE VERSION:20151026



制图:

审核:

## SPARE PARTS LIST OF KM0404102(ENGINE)

PAGE:1

Fig.NO.	PART NO.	DESCRIPTION	QTY	Fig.NO.	PART NO.	DESCRIPTION	QTY
KM0404102-E1	1E36FE.9-3	SCREW	1	KM0404102-E26	1E40F-5.3-	FLYWHEEL	1
KM0404102-E2	1E36FE.9-4	RATCHET	1	KM0404102-E27	GB/T859	FLAT WASHER	1
KM0404102-E3	1E36FE.9-1	STARTER ROPE REEL	1	KM0404102-E28	GB/T97.1	SPRING WASHER	1
KM0404102-E4	1E36FE.9-5	STARTER ROPE	1	KM0404102-E29	GB6170	NUT M8	1
KM0404102-E5	1E36FE.9-7	RECOIL SPRING	1	KM0404102-E30	1E40F-5.3-	IGNITION	1
KM0404102-E6	1E36FE.9-8	STARTER BODY	1	KM0404102-E31	1E40F-5.3.1	WIRE	1
KM0404102-E7	GB9074.4	SCREW M5*20	5	KM0404102-E32	GB9074.13	SCREW M5*20	2
KM0404102-E8	1E40FP-3Z.4-2	STARTER HANDLE	1	KM0404102-E33	1E36F-3	FLAT WASHER	2
KM0404102-E9	1E40FP-3Z.4-10	RING	1	KM0404102-E34	1E40F-5.6-1	SPRING	1
KM0404102-E10	1E36FE.9-6	SPRING	1	KM0404102-E35	1E40F-5.6.1	EXPANDER	2
KM0404102-E11	1E36FE.9-2	STARTER POLE	2	KM0404102-E36	1E40F-5-11	WAVE WASHER	2
KM0404102-E12	1E36FE.9	STARTER	1	KM0404102-E37	1E40F-5-12	SCREW PIN	1
KM0404102-E13	1E40F-5-10	STARTER GASKET	1	KM0404102-E38	1E36F-2-8	FAN COVER	1
KM0404102-E14	1E36FE.7	STARTER REEL	1	KM0404102-E39			
KM0404102-E15	1E36F.2	OIL SEAL	1	KM0404102-E40	GB9074.13	SCREW M5*25	2
KM0404102-E16	1E40F-5.8-2	CRANK CASE	1	KM0404102-E41	1E40F-5.4-2	BEARING	1
KM0404102-E17	1E40F-5.8-4	CRANK CASE GASKET	1	KM0404102-E42	1E40F-03.02.01	RING	2
KM0404102-E18	GB/T276	BEARING 6202/P5	2	KM0404102-E43	1E40F-5.4-1	PISTON PIN	1
KM0404102-E19	1E40F-5.4.1	CRANK SHAFT	1	KM0404102-E44	1E46FP.6-3	PISTON	1
KM0404102-E20	GB1099	KEY 3*5*13	1	KM0404102-E45	1E40FP-3Z.3-5	PISTON RING	2
KM0404102-E21	GB119	PIN B5*10	2	KM0404102-E46	1E40F-5-6	CYLINDER GASKET	1
KM0404102-E22	1E40F-5.8-1	CRANK CASE	1	KM0404102-E47	1E40F-5-4	CYLINDER	1
KM0404102-E23	1E40F-5.9	OIL SEAL	1	KM0404102-E48	GB/T70.1	SCREW M5*18	4
KM0404102-E24	GB119	PIN B4*10	2	KM0404102-E49	1E40F-HS.3	GUIDE COVER	1
KM0404102-E25	GB9074.4	SCREW M5*30	4	KM0404102-E50	L6(LD)	SPARK PLUG	1

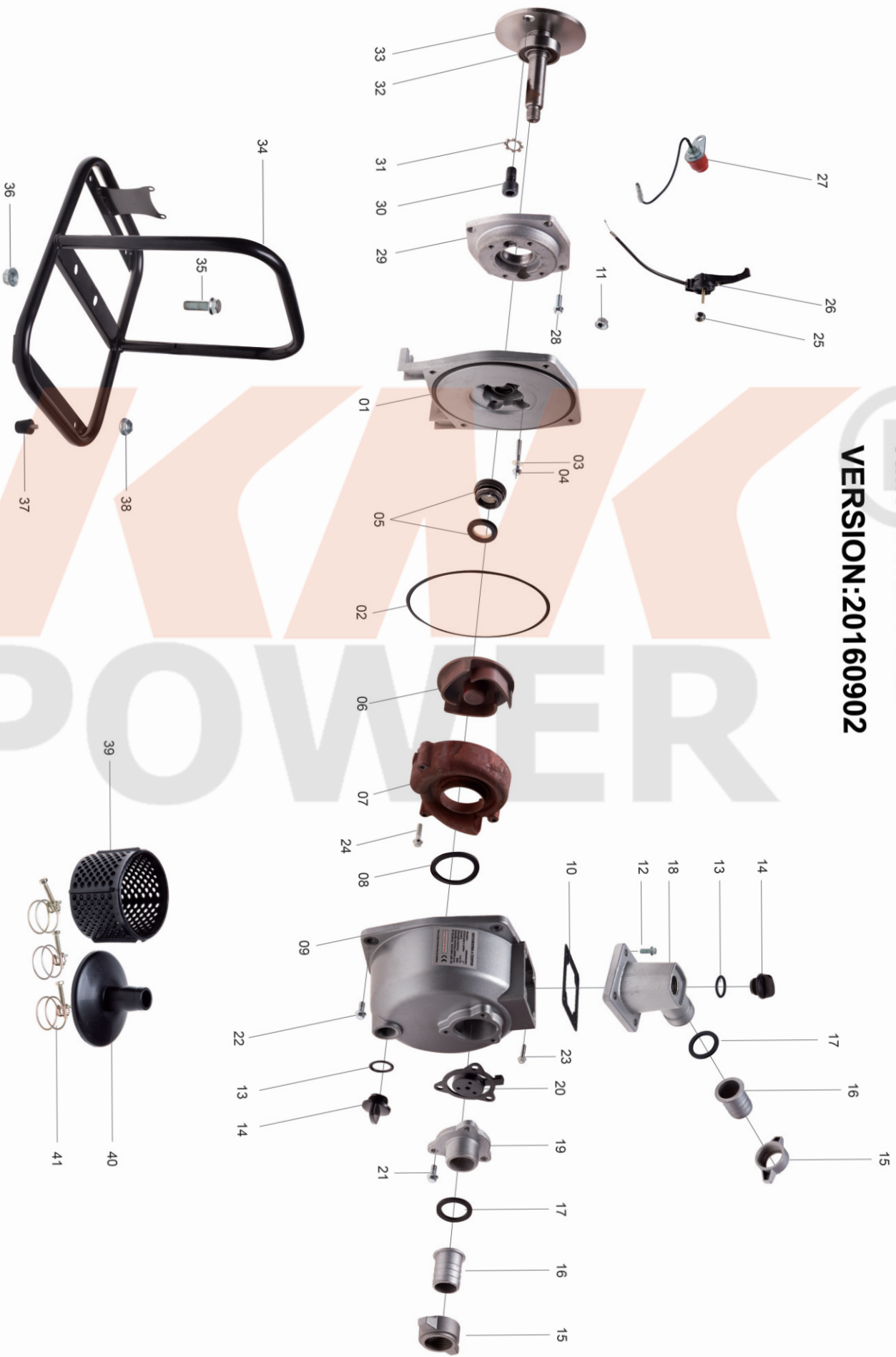
## SPARE PARTS LIST OF KM0404102(ENGINE)

PAGE:2

KM0404102-E51	1E40F-3A.8-2	SPRING	1	KM0404102-E76			
KM0404102-E52	1E34F.5-3	PLUG CAP	1	KM0404102-E77	1E40F-5A-2	RUBBER CUSHION	1
KM0404102-E53	1E34F.5-2	CAP	1	KM0404102-E78	1E34F.9.2-3	FUEL FILTER	1
KM0404102-E54	1E40F-5.3-1	PLUG	1	KM0404102-E79	1E36FE.10.1-2	FUEL PIPE (LONG)	1
KM0404102-E55	1E40F-HS-2	COVER	1	KM0404102-E80	1E36FE.8.1-1	PLUG	1
KM0404102-E56	1E40F-HS-1	MUFFLER GASKET	1	KM0404102-E81	1E36FE.10.1-1	FUEL PIPE (SHORT)	1
KM0404102-E57	1E40F-HS.2	MUFFLER	1	KM0404102-E82	GB/T9074.4	SCREW M5*16	2
KM0404102-E58	GB9074.4	SCREW M5*12	4	KM0404102-E83	1E40F-HS.5.1	FUEL TANK	1
KM0404102-E59	1E40F-5-13	SCREW M6*60	2	KM0404102-E84	1E32FL.6.2-4	CHAIN	1
KM0404102-E60				KM0404102-E85	1E32FL.6.2-3	END COVER	1
KM0404102-E61	1E40F-HS.4	MUFFLER COVER	1	KM0404102-E86	1E32FL.6.2-2	INSIDE COVER	1
KM0404102-E62	1E40F-5-2	ADMITTING PIPE GASKET	1	KM0404102-E87	EB-415.4.1.1-1	INLET	1
KM0404102-E63	1E40F-5A.2	ADMITTING PIPE	1	KM0404102-E88	CG420.1.3.1-2	O RING	1
KM0404102-E64	1E40F-5A-1	CARBURETOR GASKET	1	KM0404102-E89	1E32FL.6.2-1	FUEL TANK LID	1
KM0404102-E65	1E40F-5A.8	CARBURETOR	1	KM0404102-E90	1E32FL.6.2	FUEL TANK LID ASSY.	1
KM0404102-E66	1E34F.1-2	CHOKER HANDLE	1	KM0404102-E91	1E40F-5A-3	RUBBER CUSHION	2
KM0404102-E67				KM0404102-E92	1E40F-5A.3	STAND	1
KM0404102-E68				KM0404102-E93	GB9074.13	SCREW M5*30	2
KM0404102-E69	1E34F.1.1	CLEANER INSIDE COVER	1	KM0404102-E94			
KM0404102-E70	GB/T9074.4	SCREW M5*50	2	KM0404102-E95			
KM0404102-E71	1E34F.1-3	CHOKER	1	KM0404102-E96			
KM0404102-E72	GB/T845	SCREW ST4.2*12	1				
KM0404102-E73	1E34F.1-1	AIR FILTER	1				
KM0404102-E74	1E40F-HS.1-1	CLEANER OUTSIDE COVER	1				
KM0404102-E75	1E34F.1.2	KNOB	1				



# KM0404102 PUMP VERSION:20160902



制图:

审核:

FIG. NO.	DESCRIPTION	QTY	FIG. NO.	DESCRIPTION	QTY
KM0404102-P1	PUMP COVER	1	KM0404102-P26	THROTTLE SWITCH	1
KM0404102-P2	O RING	1	KM0404102-P27	STOP SWITCH	1
KM0404102-P3	SEALED WASHER	1	KM0404102-P28	SCREW M6*18	4
KM0404102-P4	SCREW M6*45	4	KM0404102-P29	CONNECTOR A	1
KM0404102-P5	MECHANICAL SEAL	1	KM0404102-P30	SCREW M8*16	2
KM0404102-P6	IMPELLER	1	KM0404102-P31	WASHER	2
KM0404102-P7	DIFFUSER	1	KM0404102-P32	BEARING	1
KM0404102-P8	O RING	1	KM0404102-P33	CONNECTOR B	1
KM0404102-P9	PUMP BODY	1	KM0404102-P34	PEDESTAL	1
KM0404102-P10	OUTLET SEALED WASHER	1	KM0404102-P35	SCREW M8*20	2
KM0404102-P11	NUT M8	2	KM0404102-P36	NUT M8	2
KM0404102-P12	SCREW M6*18	4	KM0404102-P37	RUBBER CUSHION	4
KM0404102-P13	O RING	2	KM0404102-P38	NUT M8	4
KM0404102-P14	WHORL PLUG	2	KM0404102-P39	WATER FILTER	1
KM0404102-P15	SANNER	2	KM0404102-P40	WATER FILTER CAP	1
KM0404102-P16	PIPE	2	KM0404102-P41	CLAMP	3
KM0404102-P17	SEALED WASHER	2			
KM0404102-P18	OUTLET FLANGE	1			
KM0404102-P19	INLET FLANGE	1			
KM0404102-P20	CHECK VALVE	1			
KM0404102-P21	SCREW M6*18	3			
KM0404102-P22	SCREW M8*20	2			
KM0404102-P23	SCREW M8*30	2			
KM0404102-P24	SCREW	1			
KM0404102-P25	NUT M5	1			

# EC Declaration of Conformity

(Directive 2006/42/CE)

We, KNK China Mfg Co., Ltd., Kai Yuan Road, 311 Nong Jiang Bei Investment & Pioneering Park, Ningbo, P.R.C., hereby declare that the product:

**Machine Type: Water Pump**

**Machine Model: KM0404102**

**Machine Brand: Mader Garden**

**M&M Ref.: 49521**

**Produced in the Year: 2014**

Complies with the following EC directives:

- **Machine Directive 2006/42/EC**

Complies with the following norms:

**EN809 /AC :2010**

**Ningbo, August, 2014**

**(Manufacturing Factory Stamp & Signature)**

**(NAME AND FUNCTION)**

*For and on behalf of*  
KNK CHINA MFG CO., LIMITED.  
凱意國際實業有限公司

  
.....  
Authorized Signature(s)

**CE**

ZERTIFIKAT ◆ CERTIFICATE ◆ 認証証書 ◆ CERTIFICADO ◆ CERTIFICAT



Product Service

# Attestation of Conformity

No. M8A 10 07 73129 003

Holder of Certificate: **KNK CHINA MFG.CO.,LTD.**

No.69 Kai Yuan Road 311 Nong,  
JiangBei Investment & Pioneering  
Park C,Nignbo,China

Name of Object: **Pumps**

**Water pump**

Model(s): **KM0404102; KM0404201; KM0404301; KM0404401**

Parameters: Model: KM0404102;KM0404201;  
KM0404301;KM0404401.

Rated power: 1.1KW; 3.2KW; 3.9KW; 9.0KW

Rated speed: 6000/min; 3600/min; 3600/min; 3600/min

Max.flow rate: 6m<sup>3</sup>/h; 27m<sup>3</sup>/h; 58m<sup>3</sup>/h; 80m<sup>3</sup>/h

Max.head: 22m; 25m; 25m; 22m

Tested according to: EN 809/A1:2009

This Attestation of Conformity is issued on a voluntary basis according to Council Directive 2006/42/EC relating to machinery. It confirms that the listed equipment (not Annex IV equipment) complies with the principal protection requirements of the directive. It refers only to the sample submitted to TÜV SÜD Product Service GmbH for testing and certification. See also notes overleaf.

Test report no.: 705201002103-01

Valid until: 2015-07-22

Date, 2010-07-23 ( Roy Yongjun Xue )



**CE** After preparation of the necessary technical documentation as well as the EC declaration of conformity the required CE marking can be affixed on the product. Other relevant directives have to be observed.

Page 1 of 1



**EC DECLARATION OF CONFORMITY**

KNK CHINA MFG CO., LTD  
KAI YUAN ROAD, 311 NONG JIANG BEI  
INVESTMENT & PIONEERING PARK,  
NINGBO, P.R.C.

THAT THE MACHINE/PRODUCT:

WATER PUMP

MODEL: KM0404102

BRAND: MADER GARDEN

PRODUCED IN THE YEAR: 2014

IS IN ACCORDANCE WITH THE:

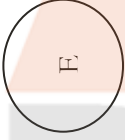
THE MACHINE DIRECTIVE 2006/42/EC

COMPLIES WITH NORMS :  
EN809 / AC :2010

22.08.2014

DISTRIBUTED BY:

MADEIRA & MADEIRA, SA



**DECLARACIÓN CE DE CONFORMIDAD**

KNK CHINA MFG CO., LTD  
KAI YUAN ROAD, 311 NONG JIANG BEI  
INVESTMENT & PIONEERING PARK,  
NINGBO, P.R.C.

QUE EL/LA MÁQUINA/PRODUCTO:

MOTOBOMBA

MODELO: KM0404102

MARCA: MADER GARDEN

PRODUCIDO/A EN EL AÑO: 2014

SATISFACE LA DISPOSICIONE  
PERTINENTE SIGUIENTE:

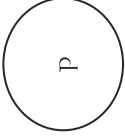
LA DISPOSICIÓN DE MAQUINARIA 2006/42/CE

ESTÁ DE ACUERDO CON LAS NORMAS:  
EN809 / AC :2010

22.08.2014

DISTRIBUIDO POR:

MADEIRA & MADEIRA, SA



**DECLARAÇÃO DE CONFORMIDADE CE**

KNK CHINA MFG CO., LTD  
KAI YUAN ROAD, 311 NONG JIANG BEI  
INVESTMENT & PIONEERING PARK,  
NINGBO, P.R.C.

QUE A/O MÁQUINA/PRODUTO:

MOTOBOMBA

MODELO: KM0404102

MARCA: MADER GARDEN

PRODUZIDO/A NO ANO: 2014

SATISFAZ A DIRECTIVA SEGUINTE:

DIRECTIVA DE MAQUINARIA 2006/42/CE

CONCORDA COM AS NORMAS:  
EN809 / AC :2010

22.08.2014

DISTRIBUÍDO POR:

MADEIRA & MADEIRA, SA

