

# PERGO®

## Four-In-One Molding for Flooring

This kit covers 78 3/4" (2 meters) or two standard doorways. Kit accommodates flooring thickness (including underlayment) from 9/32" - 19/32" (7mm - 15mm).



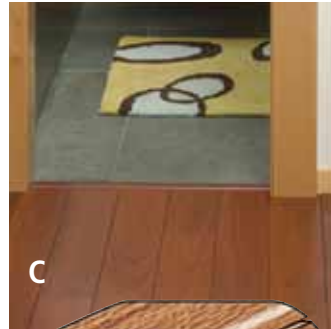
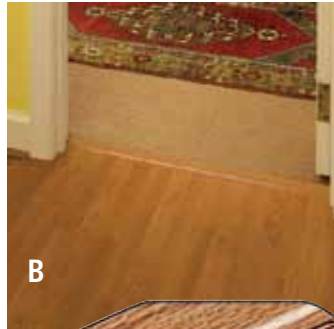
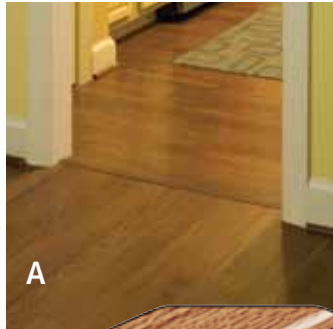
### STEP 1

#### Review Installation Checklist

- Do not push parts into track until ready to install in final position.
- Do not remove from track once installed.
- Use a new saw blade for best cutting results.
- Depending on molding type, all parts may NOT be used.
- Always install screws in end holes of track and then every other hole.
- For concrete floors, drill hole using 3/16" (5mm) diameter drill, insert plastic anchor then use screw.
- Attach the track directly to the subfloor (remove any padding or underlayment).
- Laminate flooring is installed as a floating floor and requires the use of T-moldings in doorways 4 ft (1.22m) or less and in rooms 40 feet (12.2 m) or larger in length or width.
- This product has been finished for you; do not sand or paint.

### STEP 2

Choose your transition type - Kit allows assembly of four different molding options from one single product.



A. T-Molding – transitions between equal height hard flooring surfaces.

B. Carpet Transition – transitions from flooring to carpet.

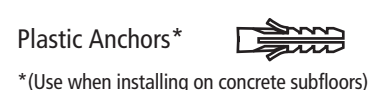
C. Hard Surface Reducer – transitions flooring to a lower surface (vinyl, wood, etc.).

D. End Molding – finishes flooring at sliding doors, fireplaces and other fixed edges.

### STEP 3

#### Install Your Moldings

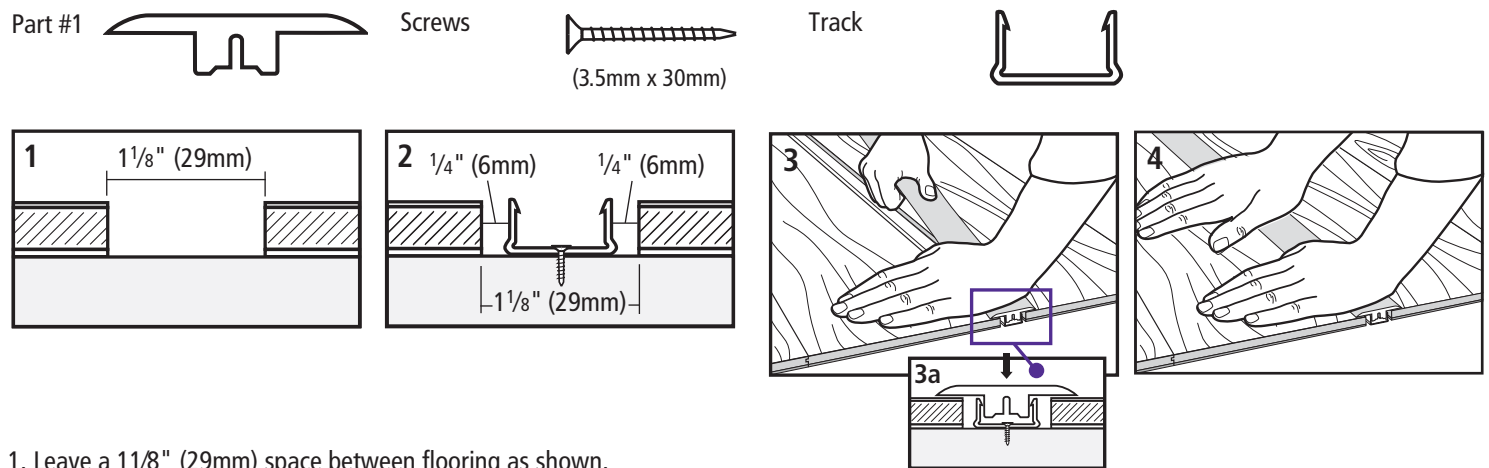
Each individual package includes:



## Symbol Key

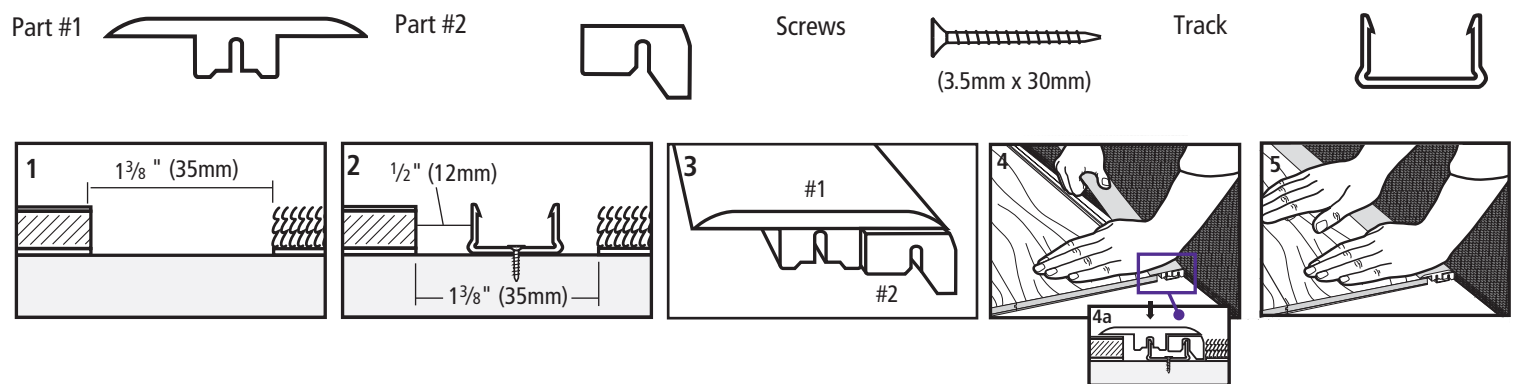


## A. T-MOLDING USE PART #1



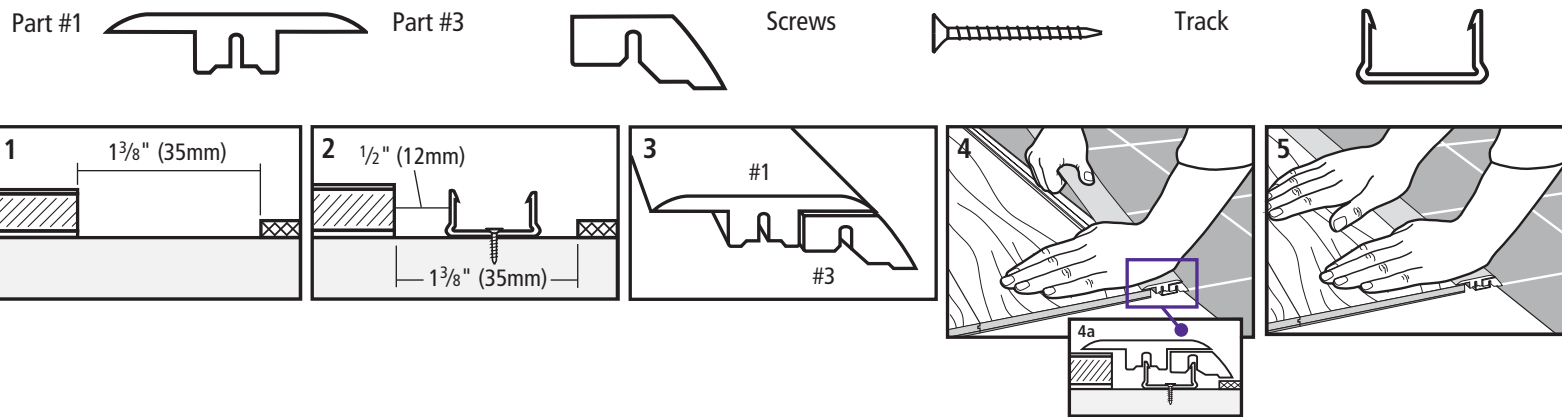
1. Leave a 1 1/8" (29mm) space between flooring as shown.
2. Install track in position with screws as shown. Leave 1/4" (6mm) expansion space on both sides of track. Add shim for floors with 12mm to 15mm thickness.
3. Start at one end. Firmly push Part #1 down into track.
4. Continue to push down firmly into track, working from one end to the other.

## B. CARPET TRANSITION USE PART #1 AND PART #2



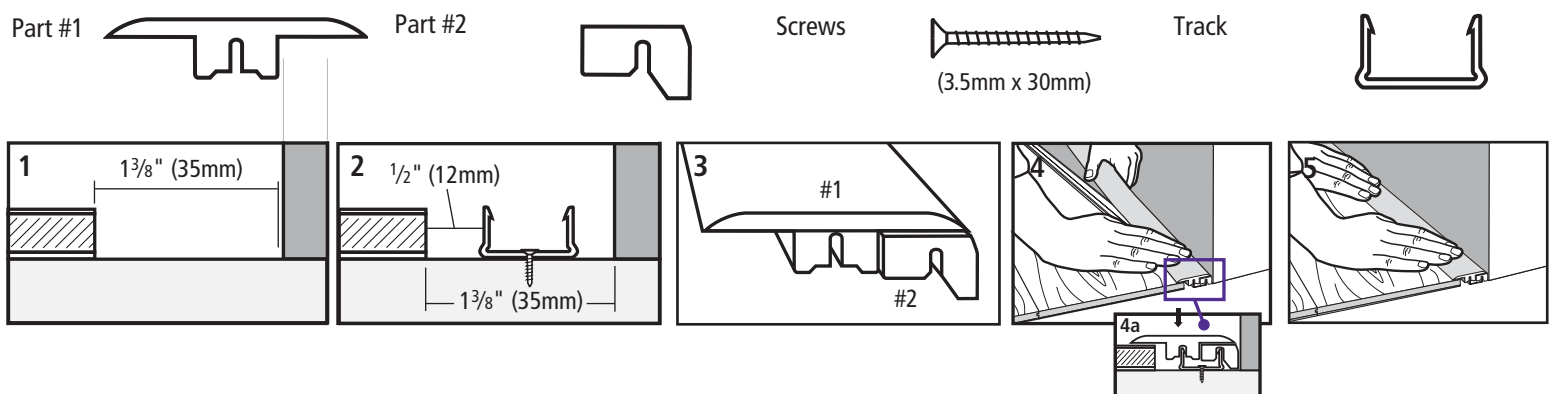
1. Leave a 1 3/8" (35mm) space between flooring and carpet as shown.
2. Install track in position with screws as shown. Leave 1/2" (12mm) expansion space between the track and the flooring. Add shim for floors with 2mm to 15mm thickness.
3. Hold Part #1 and Part #2 together as shown.
4. Start at one end and push down firmly into track while holding Part #1 and Part #2 together.
5. Continue to push down firmly into track, working from one end to the other.

## C. HARD SURFACE REDUCER USE PART #1 AND PART #3



1. Leave a 1 3/8" (35mm) space between flooring and hard surface as shown.
2. Install track in position with screws as shown. Leave 1/2" (12mm) expansion space between the track and the flooring. Add shim for floors with 2mm to 15mm thickness.
3. Hold Part #1 and Part #3 together as shown.
4. Start at one end and push down firmly into track while holding Part #1 and Part #3 together.
5. Continue to push down firmly into track, working from one end to the other.

## D. END MOLDING USE PART #1 AND PART #2



1. Leave a 1 3/8" (35mm) space between flooring and vertical edge as shown.
2. Install track in position with screws as shown. Leave 1/2" (12mm) expansion space between the track and the flooring. Add shim for floors with 12mm to 15mm thickness.
3. Hold Part #1 and Part #2 together as shown.
4. Start at one end and push down firmly into track while holding Part #1 and Part #2 together.
5. Continue to push down firmly into track, working from one end to the other.
6. Fill any space between end molding and vertical surface with 100% silicone sealant.