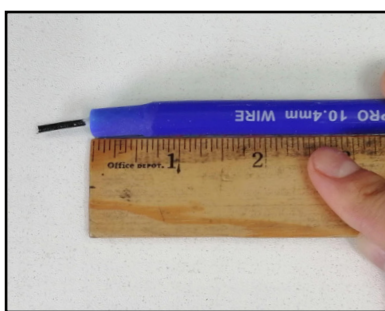


INSTRUCTION SHEET FOR TERMINATING & INSTALLING BOOTS on UNIVERSAL "409" WIRE SETS

READ ALL THE INSTRUCTIONS BEFORE ATTEMPTING TO TERMINATE AND BOOT WIRE

When replacing the spark plug wires on your engine, start with the longest wire and remove only one wire at a time. Use the removed wire(s) as a guide for the length to cut your new replacement wire(s). Mark the wire(s) at the proper length, and add 1/2" to be stripped. Also, allow additional length for distributor movement during timing adjustment. Your "409" Universal Wire Set contains 2 sets of distributor terminals and 90° boots. One set is for the early type conventional socket distributor caps, and one set is for the late type HEI distributor caps. Select the correct set for your vehicle's style of distributor cap. There is an additional 3rd style boot/terminal included for the coil wire termination & installation.

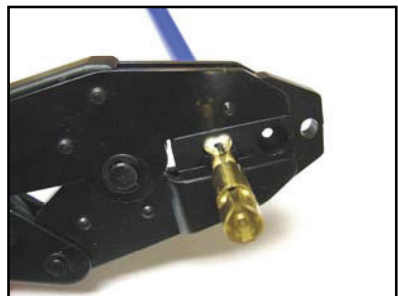
The photos below will show the installation of socket style terminals/boots. The HEI style terminals/boots are installed in a similar manner.



After you have measured and cut the wire(s) to the correct length, strip back 1/2" of silicone surrounding the center core. Next, shave approximately 3/4" in length and 3/8" in diameter at a tapered angle, being careful not to damage the core!



Next, carefully fold over the center core. Insert the wire into the terminal with the core next to the bottom of the terminal and form the terminal tabs around the wire to hold it in place for crimping.



Crimp the terminal with Taylor's #43400 or #43390 or other appropriate crimp tool.

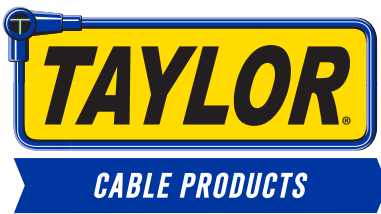
For customer service or technical help please contact us at 909-599-5955

909-599-5955 10955 Mill Creek Rd. • Lenexa, KS 66219

www.pertronixbrands.com



Revised: 4/23/24
PN# ISO13



INSTRUCTION SHEET FOR TERMINATING & INSTALLING BOOTS on UNIVERSAL "409" WIRE SETS

READ ALL THE INSTRUCTIONS BEFORE ATTEMPTING TO TERMINATE AND BOOT WIRE



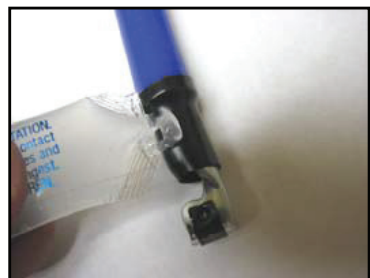
Slide a piece of heat shrink tubing over the crimped connection and apply heat with a heat gun or hair dryer. Be careful not to catch the heat shrink tubing on fire, as it will burn with excessive heat.



For the early style socket type terminal, put a slight bend in the terminal to aid in the boot installation. Insert the terminal/wire into the boot. Carefully bend the terminal up into a 90 degree configuration to fit the boot correctly. (You do not have to bend the terminal when using the late model HEI style boot/terminals).



Put some of the silicone grease on the terminal and heat shrink tubing. Spread it around the terminal to aid the installation into the distributor boot.



The steps for the HEI style terminals are similar to the conventional terminals except bending the HEI terminal is not required during insertion into the distributor boot.

Note: If you are planning a different wire routing than previously installed on your engine, it will be necessary to use the new wire(s) to determine the proper installed length for each cylinder.

For customer service or technical help please contact us at 909-599-5955

909-599-5955 10955 Mill Creek Rd. • Lenexa, KS 66219

www.pertronixbrands.com



Revised: 4/23/24
PN# ISO13