



INSTALLATION INSTRUCTIONS

Solenoid Rebuild Kit

READ THESE INSTRUCTIONS COMPLETELY BEFORE BEGINNING INSTALLATION!

NOTE: Refer to the Factory Shop Manual electrical section for safety instructions prior to performing any repairs or installations of electrical components.

CAUTION! ALWAYS DISCONNECT THE BATTERY CABLES BEFORE PERFORMING ANY ELECTRICAL SYSTEM REPAIRS OR MODIFICATIONS. THIS WILL PREVENT DAMAGE TO THE ELECTRICAL SYSTEM OR ACCIDENTAL STARTING OF THE MOTORCYCLE IN CASE OF AN ELECTRICAL ARC CAUSED BY SHORTING THE BATTERY POWER TO GROUND.

WARNING! SEVERE DAMAGE TO THE ELECTRICAL SYSTEM OR PERSONAL INJURY MAY OCCUR BY NOT FOLLOWING THE ABOVE SAFETY INSTRUCTIONS.

Step #1 OLD CONTACT REMOVAL:

USE FIGURE 1 FOR PARTS REFERENCE.

1. Pull back rubber boot covering terminal connecting the brushes to the solenoid. Remove outer nut (6) from both contact studs.
2. Remove 3 Allen head screws from solenoid cover and remove solenoid cover and gasket.
3. Remove plunger (1) and spring (2). NOTE: Be careful not to lose the ball bearing at the bottom of the solenoid cavity.
4. Remove inner nut (6) on both contacts, remove 2 washers (5) from each stud, and remove both outer insulators (3).
5. Pull studs through solenoid case and remove inner insulators (3), studs, and contacts.

NOTE: Be careful when removing stud from solenoid, a wire connecting the solenoid to the contact can break if you're not careful.

Step #2 REBUILD KIT INSTALLATION:

6. Beginning with the contact that connects the solenoid to the motor side of the starter. Insert solenoid wire in between contact (8) and stud (9).
7. Install inner insulator (4) with flat edge against the contact and press the entire assembly through the solenoid housing.
8. On the outside of the solenoid housing, slide the outer insulator (3) onto the stud (9), then 2 washers (5), and then a nut (6).

9. Tighten down the nut (6), make sure the flat of the contact is flush with the solenoid insulations plate. **See Figure 2.**
10. Connect cable from motor side of starter to the stud (9) and install nut (6). **NOTE:** Only tighten outer nut to the point where it is flush with inner nut. Overtightening will cause the entire contact assembly to turn. Cover outer contact assembly with rubber boot.
11. The process for installing the battery cable contact (long stud 7) is the same process minus connecting the solenoid wire and motor wire. The only wire to be connected to this contact assembly will be the battery cable after installing the starter on your motorcycle.
12. Make sure the solenoid wire is NOT contacting the solenoid housing as this will cause a short to ground. **See Figure 3.**
13. Re-install spring (2) onto plunger (1) and slide it into the solenoid housing.
14. Re-install solenoid cap and 3 Allen head screws, tighten until snug.

Congratulations! Your install is complete!

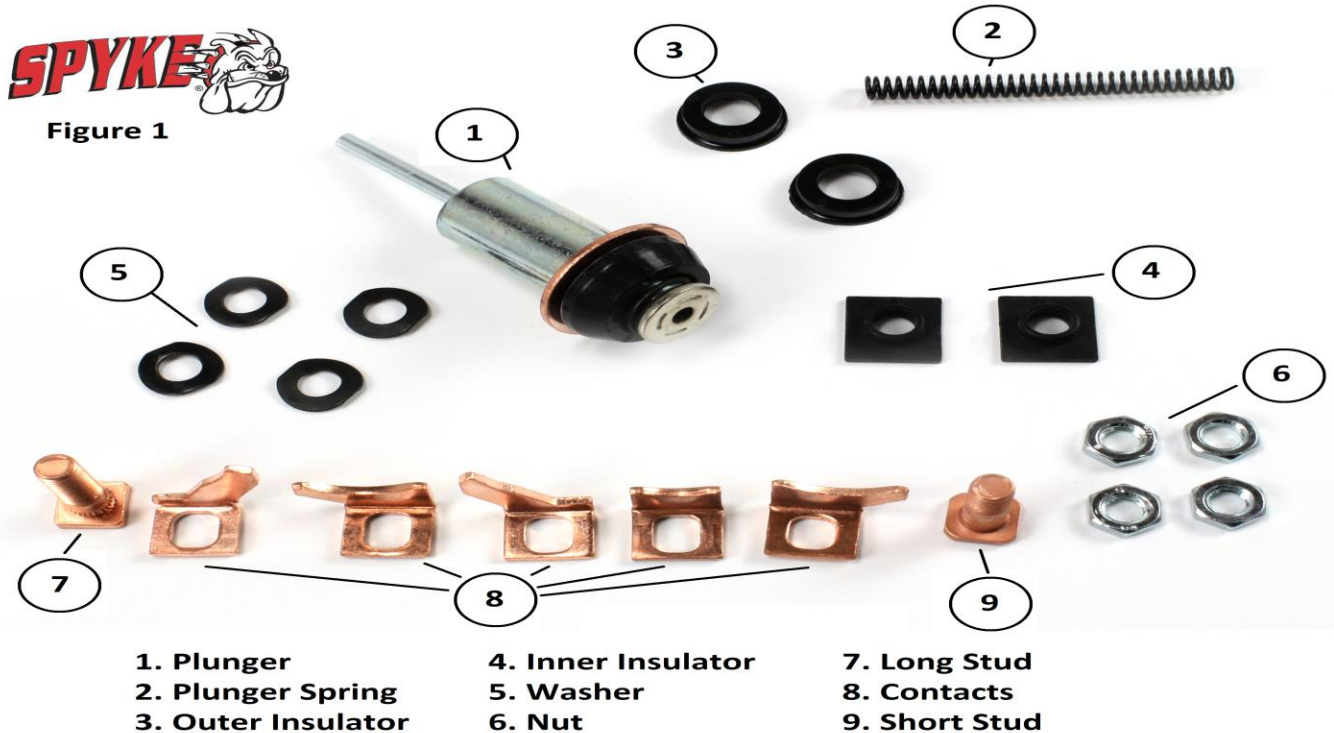
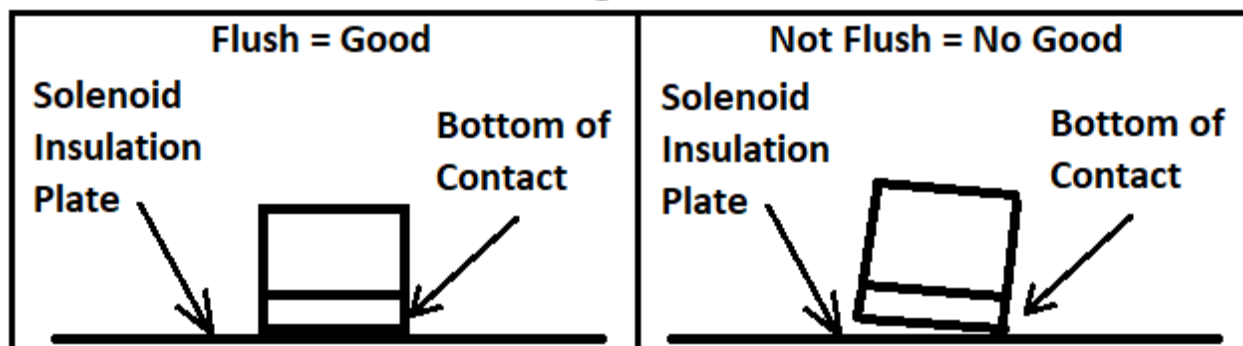
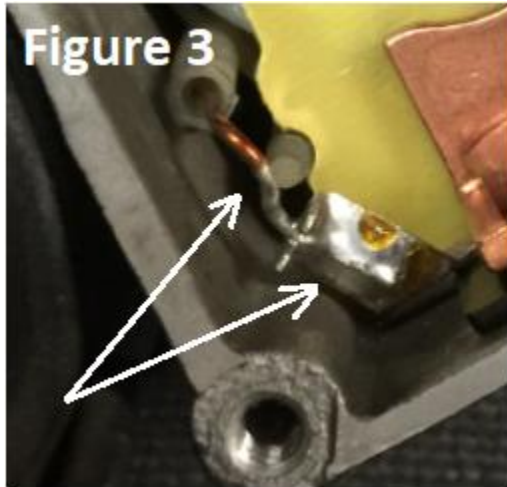


Figure 2





For technical assistance call 909/547-9058

PerTronix, LLC.
440 E. Arrow Hwy.
San Dimas, CA 91773



LIMITED WARRANTY

PerTronix, LLC. Warrants to the original Purchaser of its solid-state ignition system (product) that the module, trigger rotor and wiring (components) shall be free from defects in material and workmanship for a period of (12) months from the date of purchase.

If within the period of the foregoing warranty PerTronix finds, after inspection, that the product or any component thereof is defective, PerTronix will, at its option, repair such products or component or replace them with identical or similar parts PROVIDED that within such period Purchaser Promptly Notifies PerTronix, in writing, of such defects.