



DESERT VALLEY TESTING  
 2512 E Magnolia Street  
 Phoenix, Arizona 85034  
 480-788-6644

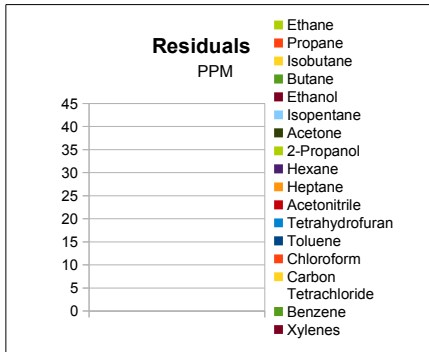
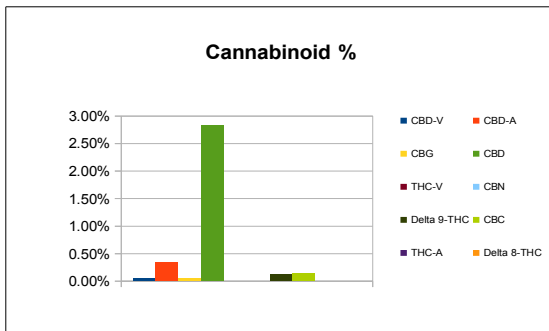
www.desertvalleytesting.com

Sample Information		
Sample Identification	Softgels 15	
Laboratory Number	2018003816	
Batch Number	112014	
Matrix	Oil	
Analyzed Date	03/21/18	
Extraction Date	03/21/18	
Cannabinoid (HPLC)	%	mg/g
Compound		
CBD-V	0.04%	0.39
CBD-A	0.34%	3.40
CBG	0.04%	0.40
CBD	2.84%	28.35
THC-V	0.00%	0.00
CBN	0.00%	0.00
Delta 9-THC	0.11%	1.12
CBC	0.14%	1.36
THC-A	0.00%	0.00
Delta 8-THC	0.00%	0.00
Cannabinoids Total		
Max Active THC	0.11%	1.12
Max Active CBD	3.13%	31.35
T. Active Cannabinoids	3.16%	31.63
Total Cannabinoids	3.50%	35.03
Max Active Ratios		
NA :1 CBD to THC		
0.0 :1 THC to CBD		



RS (GCMS-HS)	PPM	RL
Compound		
Ethane	NT	20.0
Propane	NT	5.0
Isobutane	NT	5.0
Butane	NT	5.0
Ethanol	NT	5.0
Isopentane	NT	5.0
Acetone	NT	50.0
2-Propanol	NT	5.0
Hexane	NT	5.0
Heptane	NT	5.0
Acetonitrile	NT	10.0
Tetrahydrofuran	NT	10.0
Toluene	NT	10.0
Chloroform	NT	10.0
Carbon Tetrachloride	NT	10.0
Benzene	NT	10.0
Xylenes	NT	10.0

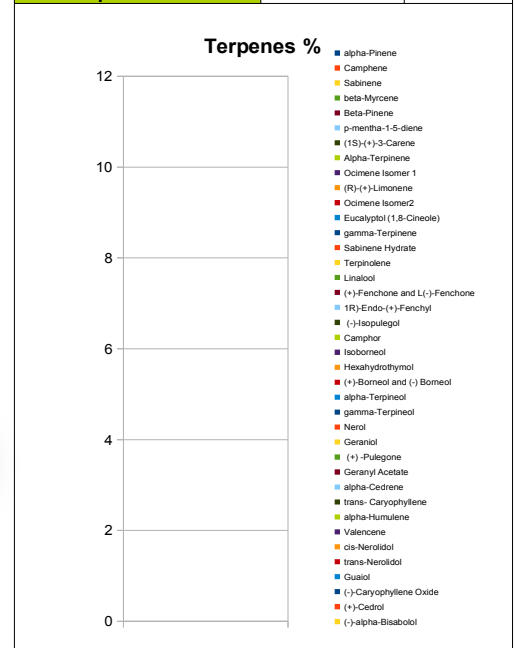
Terpene (GC-MS)	%	mg/g
Compound		
alpha-Pinene	NT	NT
Camphene	NT	NT
Sabinene	NT	NT
beta-Myrcene	NT	NT
Beta-Pinene	NT	NT
p-mentha-1-5-diene	NT	NT
(1S)-(+)-3-Carene	NT	NT
Alpha-Terpinene	NT	NT
Ocimene Isomer 1	NT	NT
(R)-(+)-Limonene	NT	NT
Ocimene Isomer2	NT	NT
Eucalyptol (1,8-Cineole)	NT	NT
gamma-Terpinene	NT	NT
Sabinene Hydrate	NT	NT
Terpinolene	NT	NT
Linalool	NT	NT
(+)-Fenchone and L(-)-Fenchone	NT	NT
1R)-Endo-(+)-Fenchyl	NT	NT
(-)-Isopulegol	NT	NT
Camphor	NT	NT
Isoborneol	NT	NT
Hexahydrothymol	NT	NT
(+)-Borneol and (-) Borneol	NT	NT
alpha-Terpineol	NT	NT
gamma-Terpineol	NT	NT
Nerol	NT	NT
Geraniol	NT	NT
(+) -Pulegone	NT	NT
Geranyl Acetate	NT	NT
alpha-Cedrene	NT	NT
trans- Caryophyllene	NT	NT
alpha-Humulene	NT	NT
Valencene	NT	NT
cis-Nerolidol	NT	NT
trans-Nerolidol	NT	NT
Guaiol	NT	NT
(-)-Caryophyllene Oxide	NT	NT
(+)-Cedrol	NT	NT
(-)-alpha-Bisabolol	NT	NT
Total Terpenes	NT	NT



Sample Image
No Image Available
Micro Visual: NOT TESTED
Percent Moisture: Not Tested

g/medible	NA
mg THC/medible	NA
mg CBD/medible	NA
(mg) total cannabinoids/medible	NA

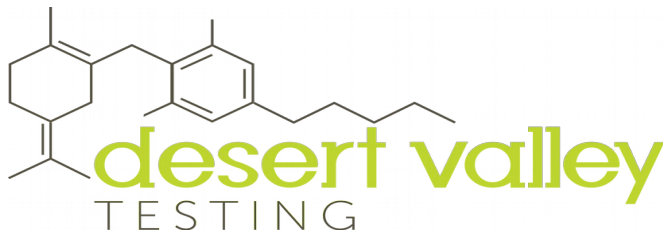
Metals	PPM	RL
Compound		
Mercury	NT	0.001
Lead	NT	0.010
Arsenic	NT	0.010
Cadmium	NT	0.010



Chemist: EG  
 Report Expires: 04/21/18



RL=Reporting Limit  
 NA=Not Applicable  
 NT=Not Tested



**DESERT VALLEY TESTING**  
 2512 E Magnolia Street  
 Phoenix, Arizona 85034  
 480-788-6644  
[www.desertvalleytesting.com](http://www.desertvalleytesting.com)

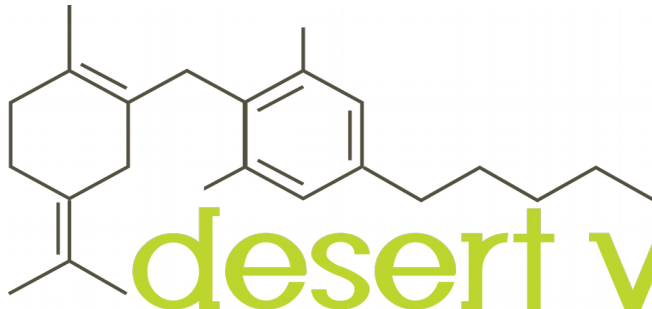
Sample			
<b>Lab ID Number</b>	2018003816	<b>Sample Type</b>	Oil
<b>Sample Name</b>	Softgels 15	<b>Date of Submission</b>	03/21/18

Results	
Enterobacteriaceae	Rapid Yeast and Mold
ND CFU/g	Mold: ND CFU/g Yeast: ND CFU/g

Comments	
<b>Generated By: JR/SF</b>	<b>Date Reported: 3/23/18</b>
<b>Reviewed By: ED</b>	<b>Comments:</b>
The microbial results reported represent the product quality and safety of the sample aliquot received for analysis. Microbial results are subject to change due to product stability (shelf life), use and storage of the product over a period of time.	



Results Key: ND = Non Detect, TNTC = Too Numerous to Count



# desert valley

## TESTING

DESERT VALLEY TESTING  
 2512 E Magnolia Street  
 Phoenix, Arizona 85034  
 480-788-6644  
[www.desertvalleytesting.com](http://www.desertvalleytesting.com)

Sample Information		
Sample Identification	Softgels 15	
Laboratory Number	2018003816	
Batch Number	112014	
Matrix	Oil	
Analyzed Date	03/21/18	
Extraction Date	03/21/18	
Pesticides (LC-MS TQ)	Mass	RL
Compound	ppm	ppm
Abamectin	ND	0.003
Bifenazate	ND	0.750
Dimethomorph	ND	3.000
Etoxazole	ND	0.350
Fenhexamid	ND	1.500
Flonicamid	ND	0.350
Fludioxinil	ND	0.001
Imidacloprid	ND	0.003
Myclobutanil	ND	0.450
Paclobutrazol	ND	0.010
Piperonyl Butoxide	ND	0.100
Pyrethrins (R1, jasmoline)	ND	0.050
Spinetoram	ND	0.085
Spinosad (A, D)	ND	0.085
Spirotetramat	ND	0.050
Thiamethoxam	ND	0.001
Trifloxystrobin	ND	0.550



**Chemist:** TH  
**Report Expires:** 04/21/18

**RL=Report Limit**  
**NT=Not Tested**  
**ND=Not Detected**