

ORGANIC LIPACTIVE INCA INCHI® WO

BALANCE REPAIR



BALANCE & HAIR

ORGANIC LIPACTIVE
INCA INCHI® WO

LIPOBIOACTIVE



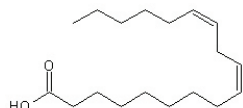
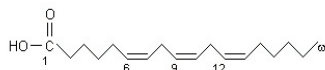
> ACTIONS

- Regenerates epidermis
- Preserves skin's lipid balance
- Softens skin
- Smoothes hair scales and sheathes cuticle
- Renders hair supple, silky and gives volume

COMPOSITION

Of all the oilseed oils, Inca inchi oil has the highest unsaturated fatty acid content (94%)

- **Omega 6** (Alpha-linoleic acid): 25-37%
- **Omega 3** (Alpha-linolenic acid): 45-60%
- **Omega 9** (Oleic acid): 8-12%
- **Palmitic acid:** 3-5%
- **Stearic acid:** 1.5%



ORIGIN

SUSTAINABILITY AND FAIR TRADE

Inca Inchi,
Plukenetia volubilis (Seed)

An Amazonian plant once valued by the Incas for its high fatty acid and protein content. Oil obtained by cold extraction, using mechanical pressure.



In 2003, an Inca Inchi cultivation and industrialization development programme was initiated in Peru - **OMEGA Programme** - associated with the reforestation of the Amazon and operating in the context of fair and sustainable trade, involving thousands of families living in the Peruvian Amazon.

GREENTECH is a founding member of this major programme.

> MECHANISM OF ACTION

The unsaturated fatty acids in ORGANIC LIPACTIVE INCA INCHI® WO preserve the skin's lipid balance, preventing keratinization disorders and improving skin elasticity and healing. It is a highly penetrating dry oil that leaves the skin silky and the hair supple and light.

> COSMETIC BENEFITS

- The skin, regenerated and balanced, becomes supple and smooth, soft and comfortable.
- The hair, repaired, is smooth, soft and glossy. It regains its volume.

> COSMETIC USES

- ▶ **Anti-ageing, regenerating and moisturizing care products**
- ▶ **Anti-stretch mark care products**
- ▶ **Sensitive skin care products**
- ▶ **Hair repair care products**

> **SCIENTIFIC PROCESS**

Linoleic and linolenic acids are essential to the formation of the epidermal lipid barrier. They are cell membrane structural fatty acids.

These polyunsaturated fatty acids are eicosanoid precursors, antagonists of inflammatory reactions. Linoleic acid also contributes to reducing black heads and the associated skin irritation.

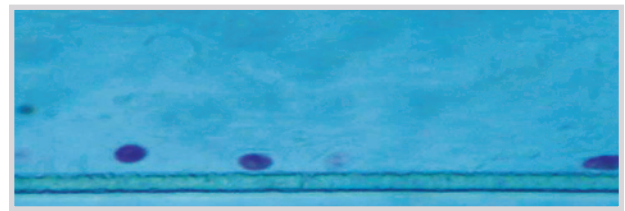
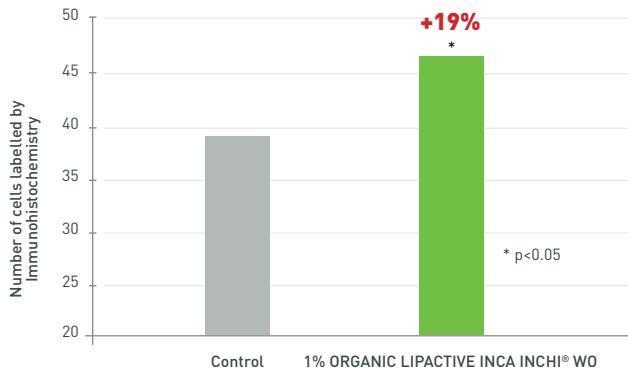
SKIN TESTS



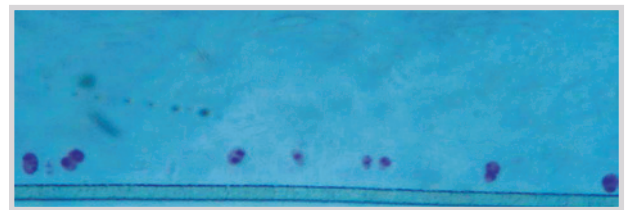
> **PROVEN EFFICACY**

IN VITRO TESTS

KERATINOCYTE REGENERATION SIMULATION: +19%



Reconstructed control epidermis



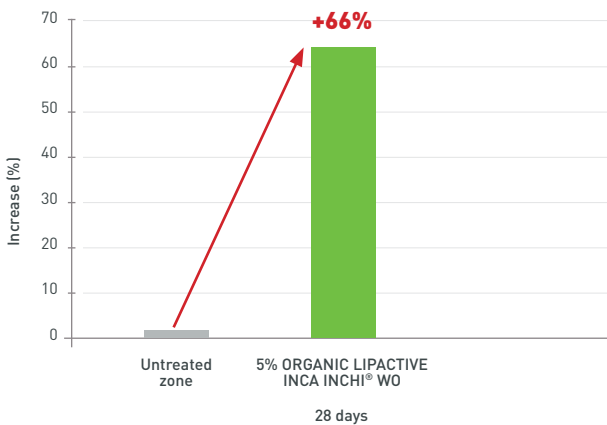
Reconstructed epidermis treated with 1% Organic Lipactive Inca Inchi® WO

> **PROVEN EFFICACY**

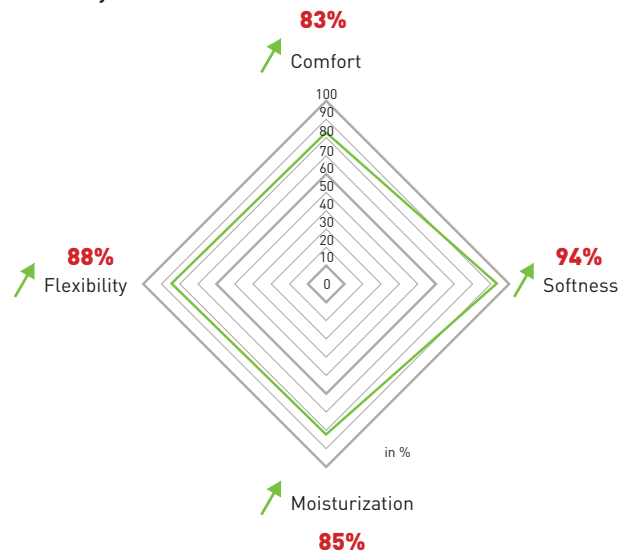
IN VIVO TESTS

IMPROVES SKIN TEXTURE

- Cutometer: skin suppleness: **+66%**



- Sensory test



HAIR TESTS



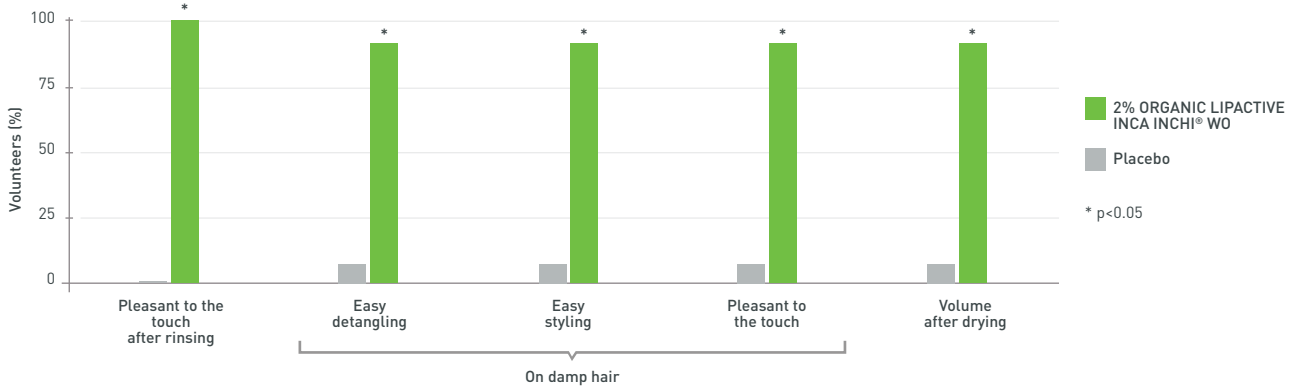
> PROVEN EFFICACY



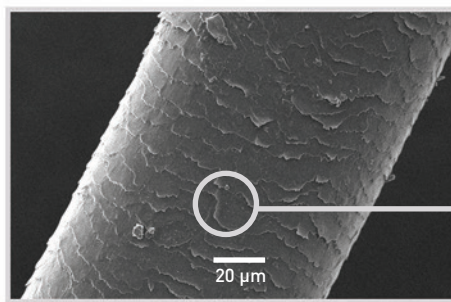
HAIR REPAIR EFFECTS

- Sensory test on 10 volunteers:

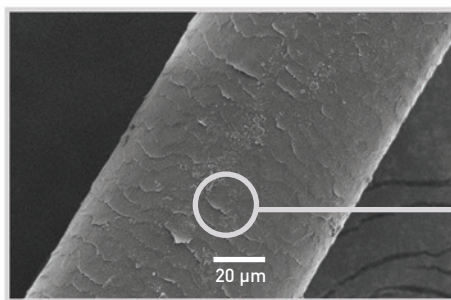
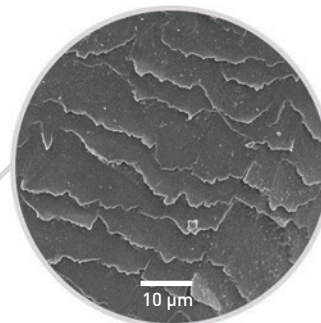
After shampoo with **2%** ORGANIC LIPACTIVE INCA INCHI® WO vs placebo



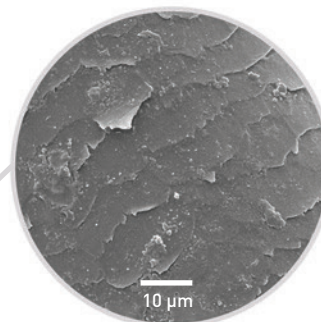
- SEM - Scanning Electron Microscopy - view of the repair effect of ORGANIC LIPACTIVE INCA INCHI® WO on scales:
 - > Without ORGANIC LIPACTIVE INCA INCHI® WO, the cuticle lifts and the hair is dull.
 - > With ORGANIC LIPACTIVE INCA INCHI® WO, the hair scales are sheathed, the cuticle closes and the hair is smoother, softer, glossier and stronger.



Conditioner PLACEBO



2% Organic LIPACTIVE INCA INCHI® WO conditioner



FORMULATION

Concentration for use: 1 to 5%**Caution for use:**

Add to emulsions, at the end of the preparation process, either cold or at 35-40 °C, during cooling.

TECHNICAL DATA

Characteristics

Organoleptic	Appearance: liquid Colour: yellow to amber
---------------------	---

Storage

Keep in a dark place, in the original packaging and at ambient temperature (15-25 °C). Use rapidly once opened, or transfer to sterile packaging.

Tolerance tests

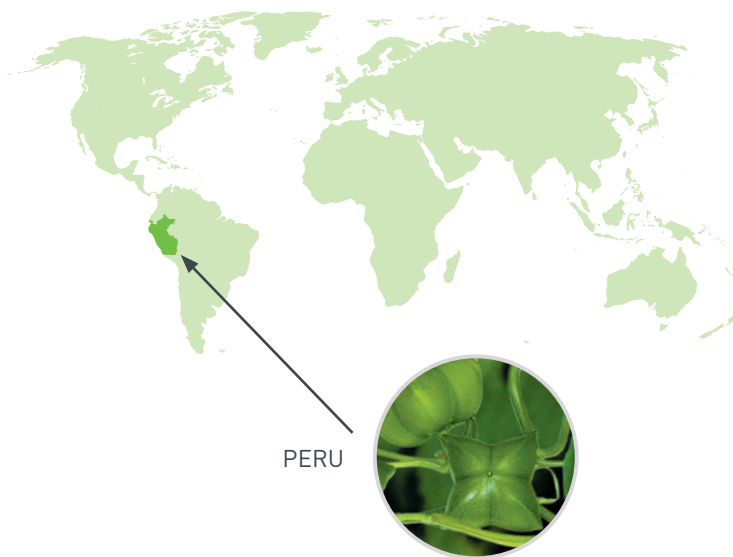
- Eye irritation: mildly irritating
- Skin irritation: non-irritant
- Sensitisation: hypoallergenic
- Mutagenicity: non-mutagenic and non-pro-mutagenic
- Phototoxicity: non-phototoxic



Inca Inchi cultivation



Sorting Inca Inchi seeds



INCI name: Plukenetia volubilis Seed Oil, Tocopherol

Authorized: 

Warning: The information in this document are the result of studies and interpretations based in part on published or generally accepted scientific data. They are provided for information purposes in terms of possible end applications and cannot be considered as instructions for use. We accept no responsibility concerning marketed formulas containing one or more of our products. Compounders must take all necessary precautions and ensure that all legal and administrative formalities have been fulfilled.

June 2017 edition