

Pullman CB-60

Part Number : 11500014



- CB 60 SS -

Product Numer	Supplier Reference	Diagram Number	Description	Reference	Order Type
11500014	CB60-2-SS		Pullman,cb60-2-ss janitor canister		W/O
31110125	A-056B-7 40DS		Tool,floor pullman cb30 cb60 cb80		W/O
31120070	A-056B-5 40LTS		Tool,crevice 40mm pullman cb30 cb60 cb80		W/O
31130061	A-056B2		Tool,dusting brush 40mm pullm cb30 cb60 cb80		W/O
31150247	A-056B3		Tool,c/head pullman cb30 cb60 cb80		W/O
31150248	A-056B4		Tool,squeegee pullman cb30 cb60 cb80		W/O
31600027	31600027		Tool,commercial set pullm cb60ss cb80ss		W/O
31600028	AP.QT.094/095		Tool, repl cb60sscb80ss rubber blades &squeege set		W/O
31600032	31600032		Tool, repl cb60ss,cb80ss, removable bristle blades		W/O
31220267	A-056B-1+2+3		Hose,assy 40mm pullman cb30 cb60 cb80		W/O
31300391	A-056B-6 40ST		Rod,extn 40mm pullman cb30 cb60 cb80		W/O
31300392	A-056B-2 40TI		Rod,upper 40mm pullman cb30 cb60 cb80(disc)		W/O
33101023	CB60-2-SS/32	32	Tank,stainless steel pullman cb60-2-ss		W/O

*W/O : Warehouse order

*S/O : Special order

*REP : Repair centre order

- CB 60 SS -

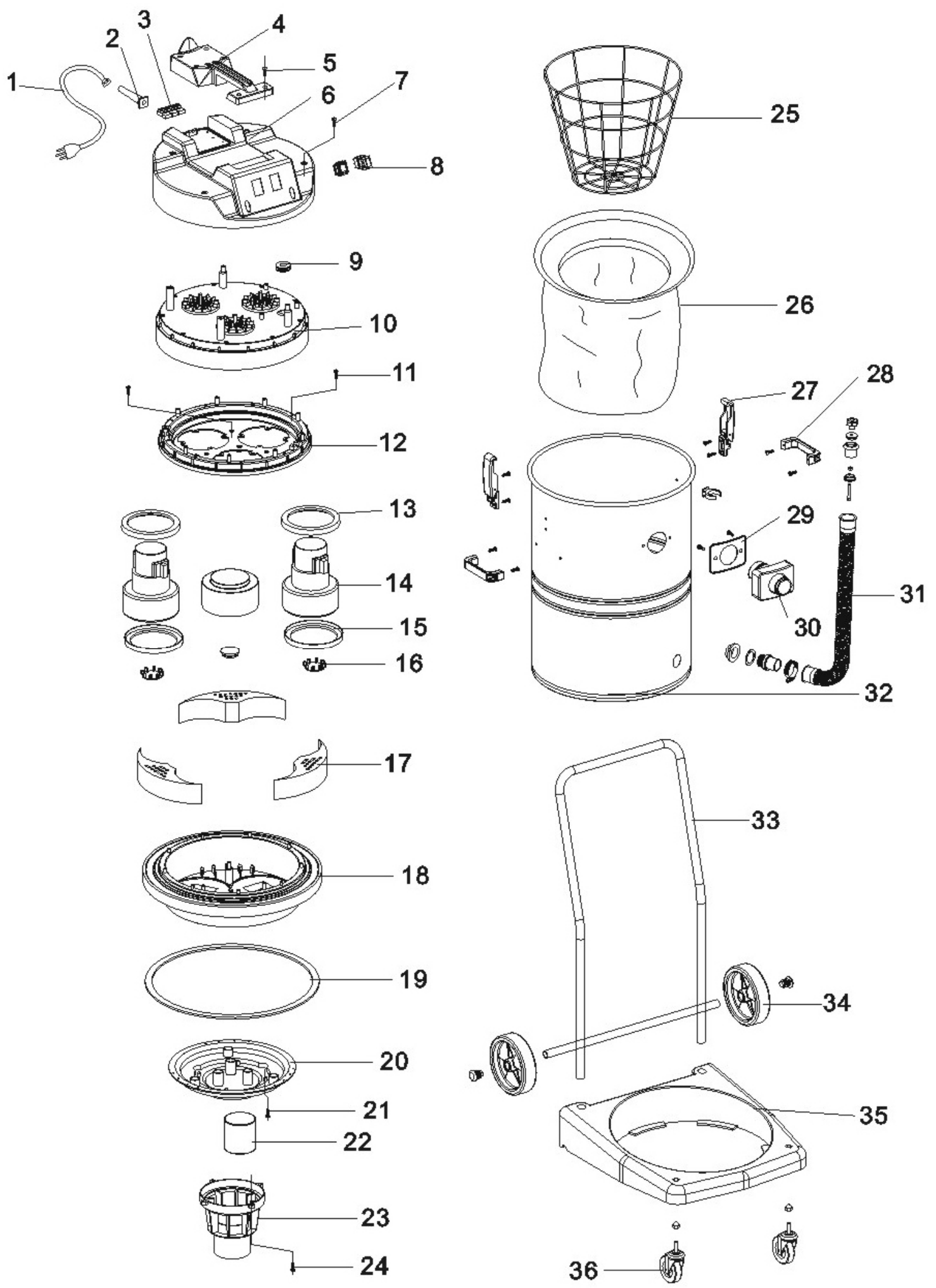
- CB 60 SS -

Product Numer	Supplier Reference	Diagram Number	Description	Reference	Order Type
33101025	33	33	Handle,trolley pullman cb60-2-ss cb80-3-		W/O
33101026	35	35	Base,trolley pullman cb60-2-ss cb80-3-ss(disc)		W/O
33101028	DIAG # 31 CB60/8	31	Pipe,drain pullman cb60-2-ss cb80-3-ss		W/O
33200523	7	8	Switch,on&off pullman cb15 cb30 cb60 cb8		W/O
33400126	26	26	Bag,cloth pullman cb60-2-ss cb80-3-ss		W/O
33701474	22	27	Latch,tank pullman cb15 cb30 cb60 cb80		W/O
33701572	CB60-80/25	23	Cage,float pullm cb60 cb80		W/O
34400162	14	14	Motor,suction pullman cb15 cb30 cb60 cb8		W/O
33200007			Cord, pullman cb15 cb30 cb60 cb80		W/O

- CB 60 SS -

*W/O : Warehouse order
 *S/O : Special order
 *REP : Repair centre order

CB60 Exploded Diagram



CB60 Exploded Diagram

Spare Parts List

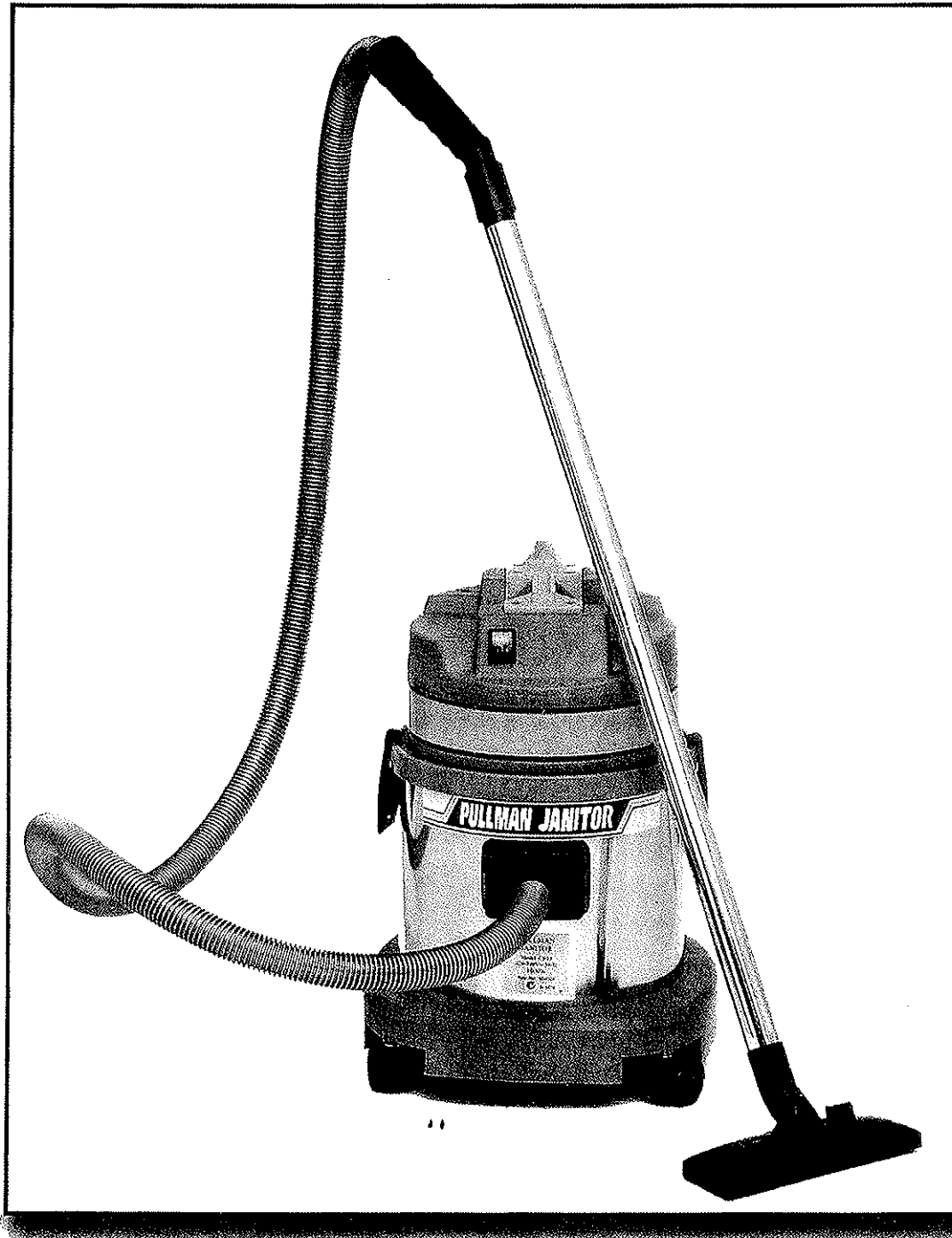
No.	Description	Supplier Code
	CB60-2-SS	11500014
1	Cord Flex 18m 3 Core	33200045
8	On/off Switch	33200523
13	Top Motor Gasket	33700529
14	Bypass Motor	34100001
15	Bottom Motor Gasket	33700529
17	Motor Insulation Foam	32200391
18	Base Motor	33701547
22	Float	33701473
23	Float Cage	33701572
25	Holder Cloth Bag	33701479
26	Bag Cloth	33400126
27	Latch Tank	33701474
29	Gasket Tank Inlet	33700552
30	Tank Inlet PVC	33700481
31	Water Pipe	33101028
32	Tank S/Steel CB60	33101023
33	Handle Trolley	33101025
34	Wheel Rear	33500315
35	Base Trolley	33101026
36	Castor Wheel	33500316

CB60-2-SS / CB80-3-SS Accessory List

No. from the drawing	Description	FOB Guangzhou Price	
		CB60	CB80
1		CB60	CB80
2	Cover		
3	Binder		
4	Handle		
5	Screw		
6	Coping		
7	Screw		
8	Switch	62009	62009
9	Gasket		
10	Cover for the motor		
11	Screw		
12	Motor holder		
13	Top Gasket for motor		
14	Motor	74006	74006
15	Base Gasket for motor	66801	66801
16	Holder		
17	Insulative cotton		
18	Base of motor	66806	66806
19	Airproof loop for the base		
20	Base of motor		
21	Screw		
22	Float		
23	Float cage		
24	Screw		
25	hob for dust bag		
26	Dust bag	+++++	+++++
27	Canister lid attachment clip	52009	52009
28	Plastic Handrail for the tank		
29	Rubber seal		
30	Hose attachment port		
31	Drainpipe		
32	CB60-2-SS Tank	55433	
	CB80-3-SS Tank		
33	U-sharp base handrail		
34	Back wheels	54664	54664
35	Pedestal	72406	72406
36	Front wheels	54663	54663
37	Wheel and axle		



Instruction Manual for models CB15-CB80



Please read this manual before operating

Congratulations on your purchase of your new Pullman Janitor vacuum cleaner. There are many useful features built into your cleaner and we recommend that you carefully read this instruction manual

BEFORE YOU BEGIN

This product must be operated in accordance with these instructions and safety reminders.

PLEASE READ THESE INSTRUCTIONS THOROUGHLY.

This will ensure you obtain full benefit from your new cleaner. Keep this Instruction Manual in a handy place for future reference.

IMPORTANT

Always switch the cleaner off and remove the plug from the electricity supply before cleaning your appliance, when not in use, or attempting any maintenance task. The cleaner must only be connected to an AC supply at the voltage shown on the rating plate. This cleaner should only be used for its intended purpose as described in these instructions.

Make certain the cloth filter bag is always fitted when dry vacuuming whether a paper filter bag is used or not.

DO NOT pick up hard or sharp objects, matches, hot ashes, cigarette ends or similar items.

DO NOT pick up flammable liquids such as cleaning fluids, petrol etc., or use in the presence of such vapors.

DO NOT allow children or the infirm to operate this appliance without supervision. It must not be used on people or animals.

Always disconnect the cleaner from the power outlet by pulling out the plug directly. NEVER by pulling on the supply cord.

If using an extension cord please make sure that it is of an approved type and that it is fully extended. Failure to do so could cause your cleaner to overheat and damage it.

DO NOT continue to use this appliance if it appears to be faulty or the supply cord is damaged. If the supply cord is damaged, it must be replaced by the manufacturer or its service agent or a similarly qualified person in order to avoid a hazard. If a fault cannot be rectified, please return to the point of purchase.

If damaged, return the cleaner for repair by an authorised Pullman Service Centre in order to avoid a safety hazard.

Consult the trouble shooting guide in this manual if your vacuum cleaner fails to operate properly. Contact an authorised service agent if the problem persists.

AFTER USE

Switch the system off and remove the plug from the electricity supply. Always switch off and remove the plug before attaching any accessories or cleaning the vacuum cleaner.

PROTECTING THE ENVIRONMENT

When you have unpacked the unit, do not simply throw the packing into the household waste. Take them to an appropriate collecting point for the recycling.

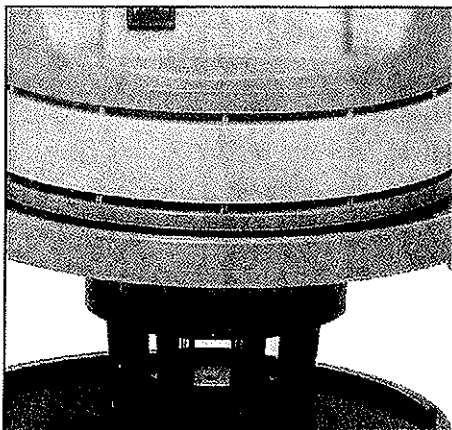
Pullman Janitor

Models CB15-CB80

220-240v AC 50 Hz

TROUBLE SHOOTING

PROBLEM	CAUSE	REMEDY
Motor does not start or stops.	No power supply.	Check cable, plug and socket. If still inoperative, contact service agent.
Suction force gradually decreases.	Tank is full, suction hose or wand is blocked, or dirty cloth filter bag.	Empty tank, remove objects from hose or wand, clean or replace filter bag.



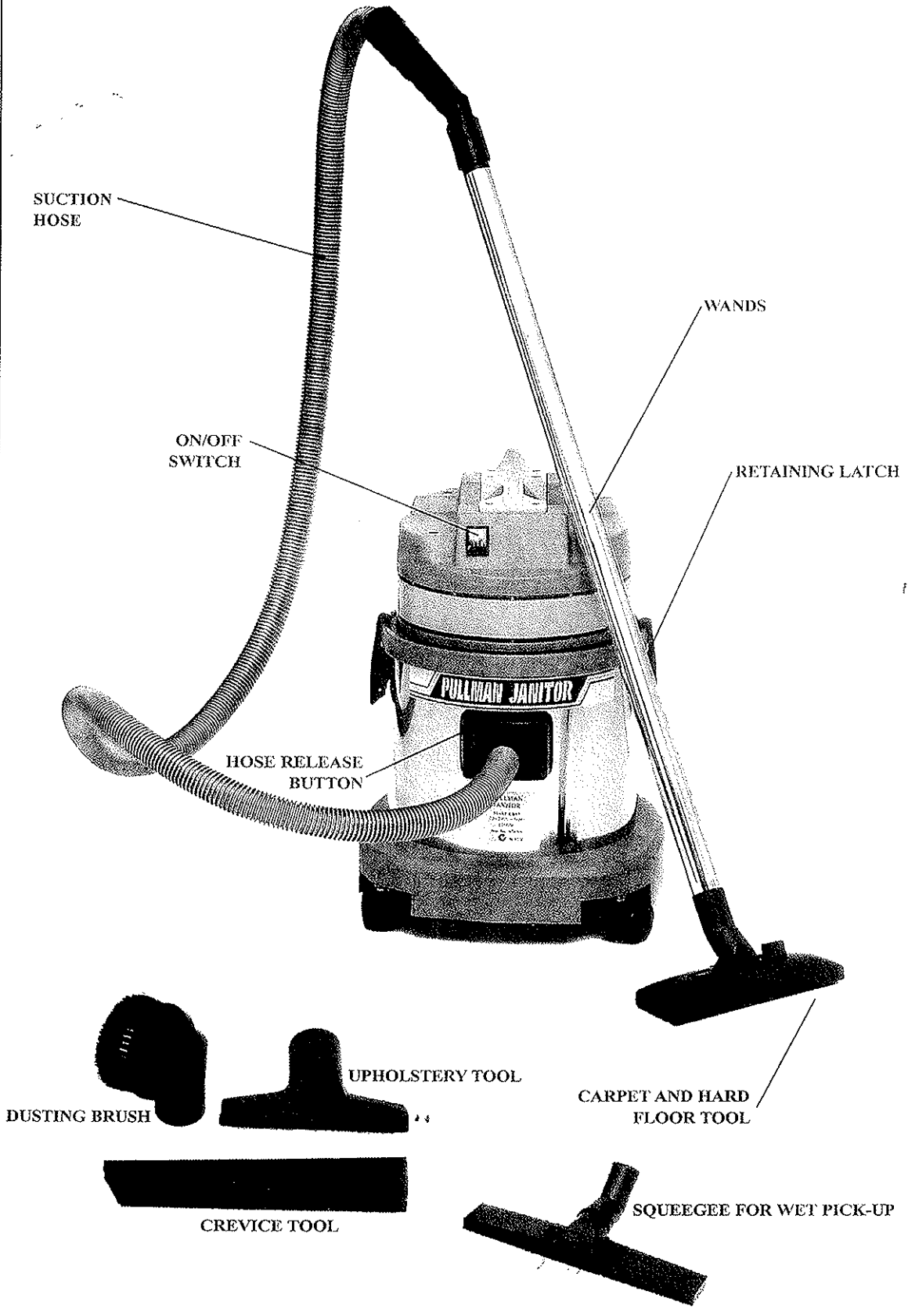
The Pullman Janitor is fitted with a special float device, that when the liquid rises to a predetermined level, the cleaner will not suck up any more of the liquid. The tank should be emptied after disconnecting from mains supply.

IMPORTANT: Do not have the cloth filter bag fitted when using for wet pick-up.

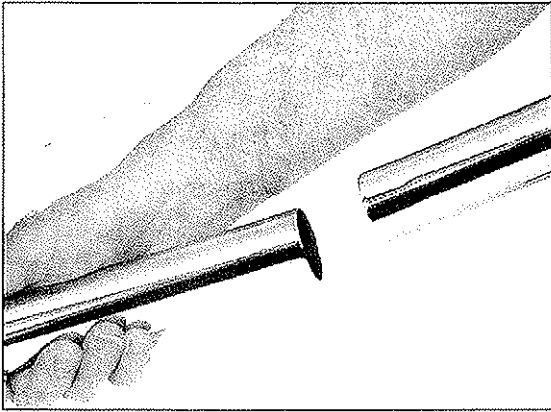
..

Due to our program of continuous product improvement and innovation, sometimes the product you buy may differ slightly from the one shown on the product carton

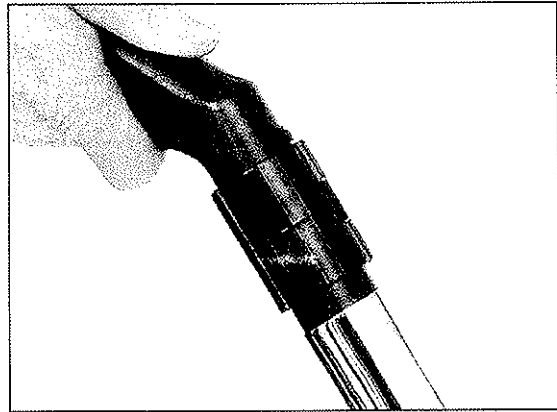
IDENTIFICATION OF PARTS



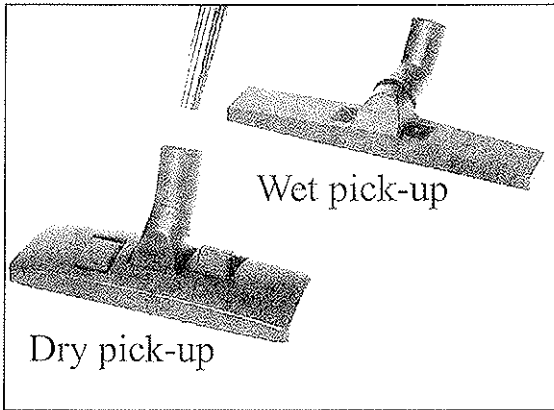
ASSEMBLY AND FILTER REMOVAL/REPLACEMENT



1. Assembly is easy and straight forward. Start by fitting together the two steel rods.



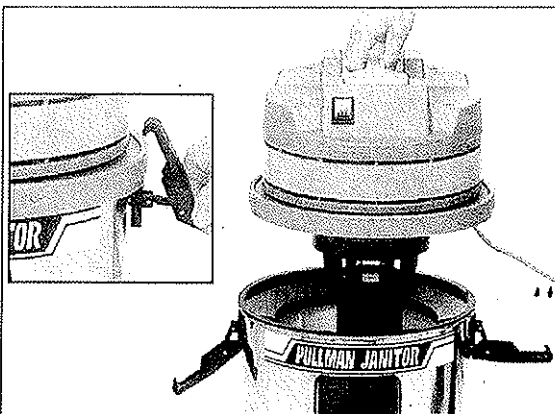
2. Take the handle assembly which incorporates the flexible hose and fit to one end of the steel rods.



3. Depending on if you are going to use for dry or wet pick-up, fit the correct head to the end of the wand.



4. Fit the end of the hose into the input of the cleaner. Remove by pressing button as shown and pull hose out.



5. To empty tank or remove cloth filter undo the two side latches and lift head off.

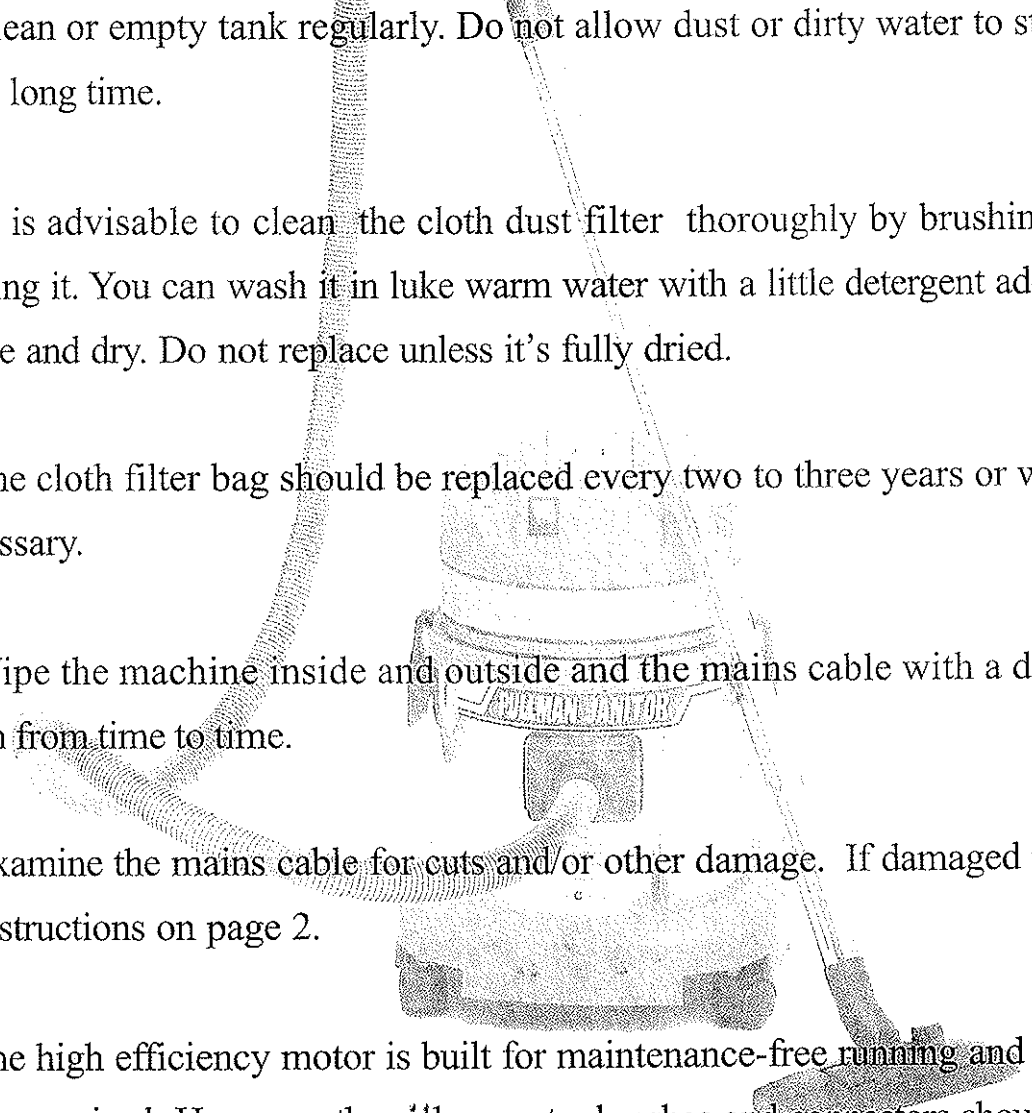


6. The filter can be taken out and cleaned, **Do not replace if using for wet pick-up**, only replace for dry use.

CLEANING AND MAINTENANCE

BEFORE YOU BEGIN

Disconnect from mains power supply before removing or fitting any accessory or carrying out any maintenance work.

1. Clean or empty tank regularly. Do not allow dust or dirty water to stand for a long time.
 2. It is advisable to clean the cloth dust filter thoroughly by brushing or beating it. You can wash it in luke warm water with a little detergent added. Rinse and dry. Do not replace unless it's fully dried.
 3. The cloth filter bag should be replaced every two to three years or when necessary.
 4. Wipe the machine inside and outside and the mains cable with a damp cloth from time to time.
 5. Examine the mains cable for cuts and/or other damage. If damaged refer to instructions on page 2.
 6. The high efficiency motor is built for maintenance-free running and need not be serviced. However, the carbon motor brushes and connectors should be checked once a year by a service engineer to ensure optimum performance.
- 



**This guarantee applies in Australia and New Zealand only.
For the guarantee in other countries contact
your local retailer/distributor.**

Your new Pullman Janitor vacuum cleaner, which has been fully tested and adjusted, carries a one year guarantee against manufacturing defects. Brushes, accessories and filters, unless actually defective in manufacture are not subject to this guarantee since their length of life depends upon usage and care given. Any transportation costs involved in the repair of the appliance shall be borne by the claimant.

This guarantee commences from the purchase of the product. When properly used and cared for, your Pullman Janitor vacuum cleaner will render excellent service, and therefore, the purchaser should carefully read this instruction manual, as misuse or failure to follow the instructions makes this guarantee void. It also becomes void if the product is used on an electric voltage other than that shown on the rating plate. EHA is unable to accept responsibility for damage carried out by other than authorised service retailers or centres, or from the use of other than genuine parts.

This guarantee does not apply to the cost of replacing any part of the product due to normal wear and tear, alteration, improper installation, physical abuse, misuse or accident. In the event of service or advice been needed, please contact your retailer for your nearest authorised service agent. Alternatively, please check your local Yellow Pages directory under vacuum cleaners.

The benefits conferred by this guarantee are in addition to all other rights and remedies in respect of the product which the consumer has under the Trade Practices Act and other State and Territory laws.

Keep this guarantee and your receipt as proof of purchase

AVCC policy is one of continuous development and accordingly we reserve the right to change specifications without prior knowledge.

Electrical Home-Aids Pty Ltd
169-175 Parramatta Road, Auburn, NSW 2144 Australia
Private Bag 120 Silverwater D.C. 1811 NSW