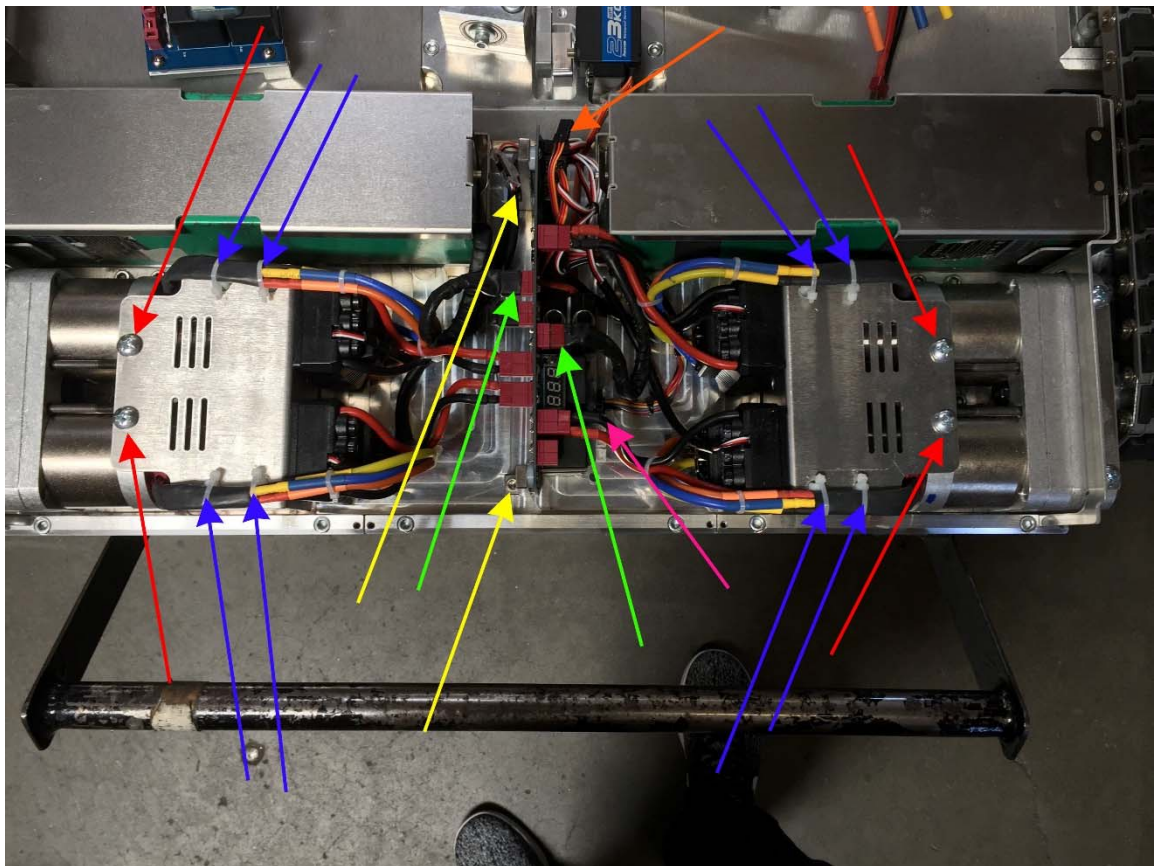


## Replacement of T2V2/T1.7 Electronics

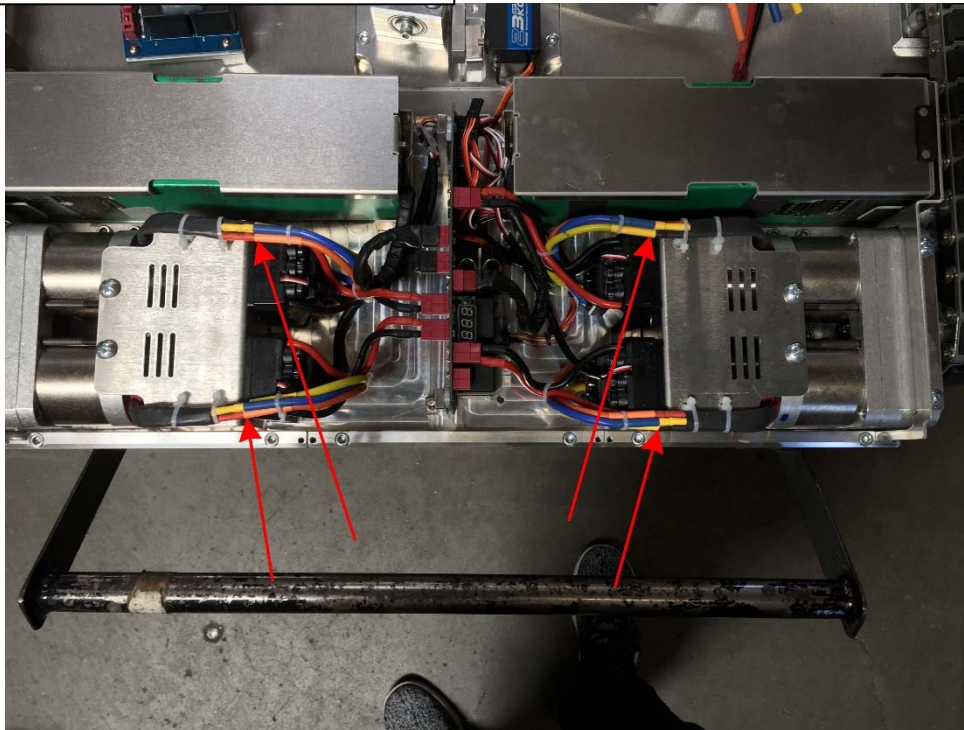
1. Disconnect both battery plugs from main PC Board (see green arrows in Figure 1)
2. Disconnect Servo plug from receiver (position 5 of receiver, see orange arrow in Figure 1)
3. Disconnect on/off switch plug and charge plug from PC board (see pink arrows in Figure 1)
4. Cut the 8 zip ties holding the motor wires (see blue arrows in Figure 1)
5. Remove 4 Phillips screws holding motor covers. Be careful not to lose the small plastic spacers under the screws. (see red arrows in Figure 1)
6. Remove 2 Allen screws holding PC board to plate (see yellow arrows in Figure 1)

Figure 1



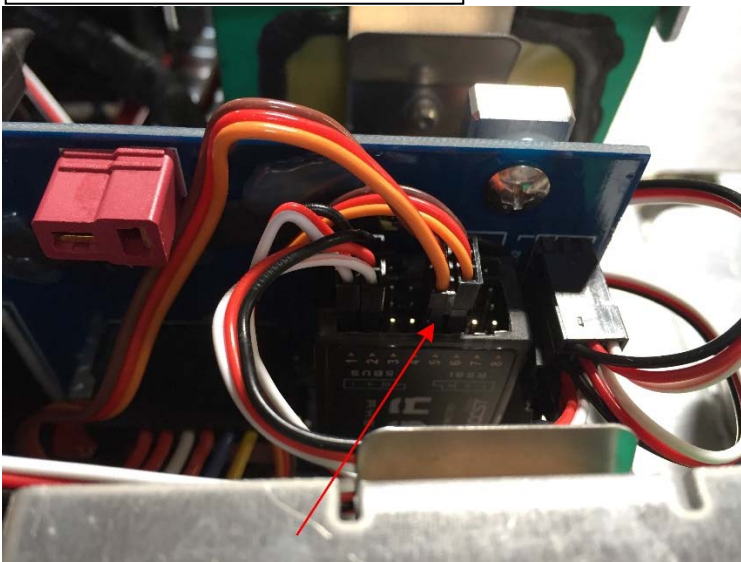
7. Disconnect 4 motor connections. Each motor connection has 3 wires. (see red arrows in Figure 2)

Figure 2



8. Lift PC Board and Speed controls out of the tug being careful to not pull on battery wires or servo wire.
9. Place the new PC Board and speed controls in the tug location.
10. Follow steps 6 through 2 in reverse order, leaving the motors and the batteries disconnected. Plug in servo to receiver position 5 (see red arrow in Figure 3)

Figure 3



11. Connect all 4 motors making sure to connect the colored wires properly. Orange to Orange, Yellow to Blue, Black to Yellow (see Figure 4).

Figure 4



12. Use 8 zip ties to connect motor wires to motor cover. Trim excess zip tie material when they are pulled tight.
13. Connect battery plugs to the main PC board.
14. It may be necessary to use additional zip ties to secure any wires that may get tangled or pulled by any moving parts in the tug.