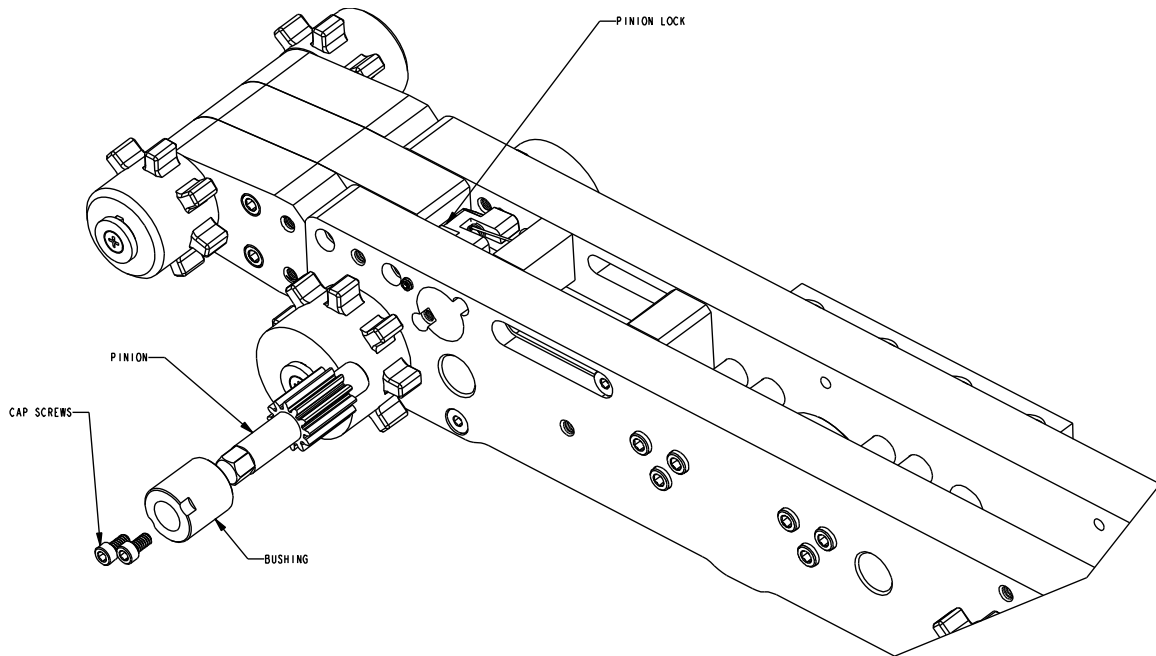


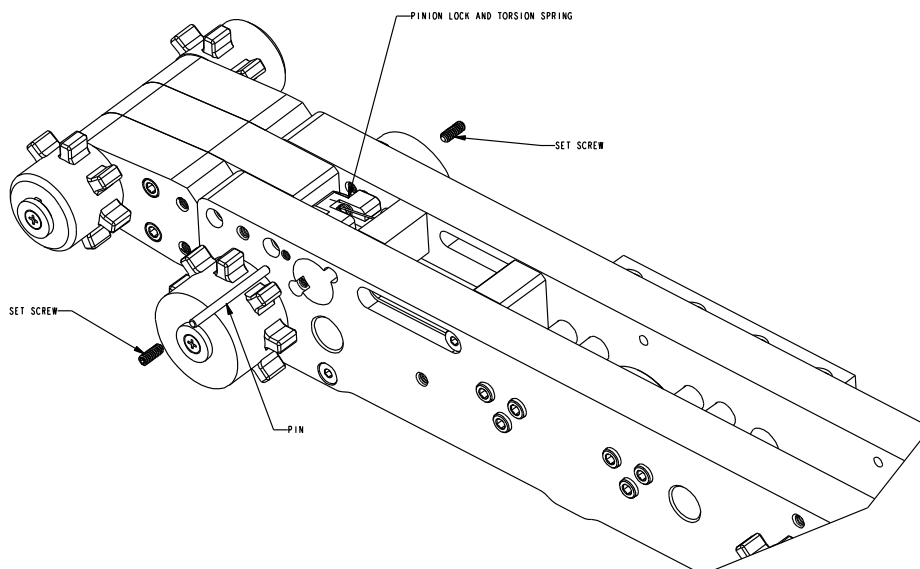
Replacement of Pinion Lock on T2V2 Tug

Disassembly Procedure

1. Remove all the plastic covers from the adjustable rail assembly
2. Remove the track from the adjustable rail assembly
3. Remove 2 cap screws (see figure below)



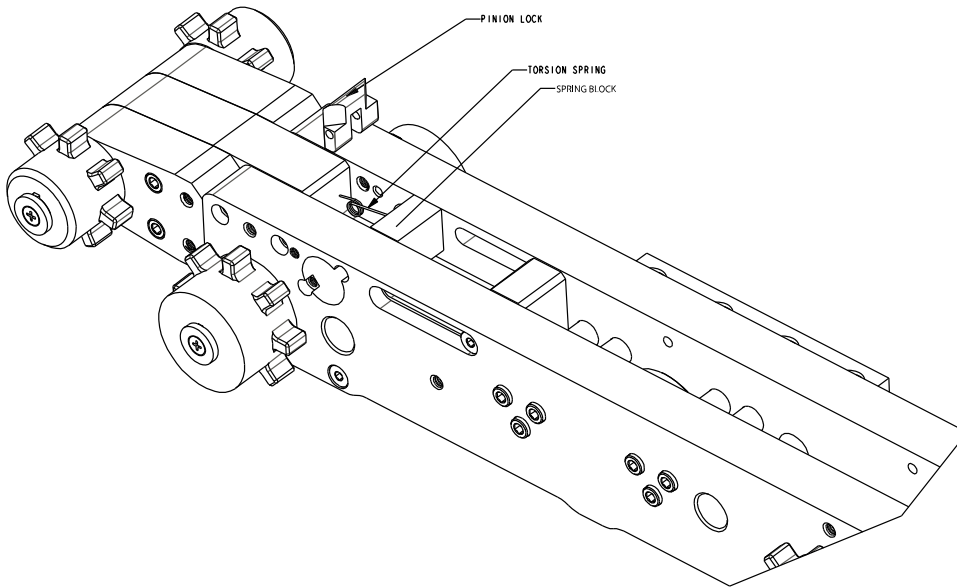
4. Remove the pinion by grabbing the hex with a pair of pliers and pulling it out, the bushing will come out with the pinion and a small plastic washer on the end of the pinion.
5. Remove 2 set screws, one on outside of rail and one on inside of rail. (see figure below)



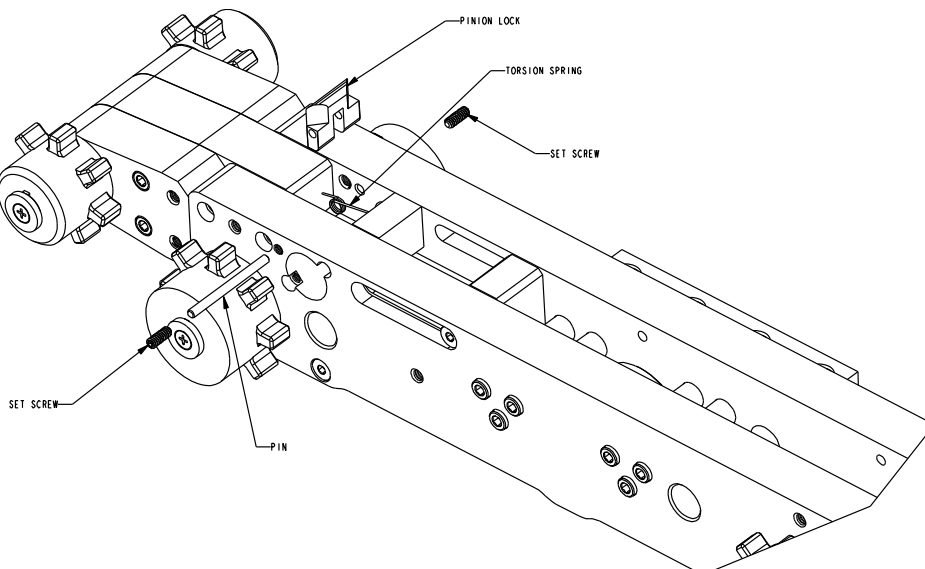
6. Remove the pin (see figure above) by pushing it out with a smaller pin. (hint: use the same allen wrench used to remove the set screws to push out the pin)
7. Remove the pinion lock and the torsion spring from the rail assembly.

Assembly Procedure

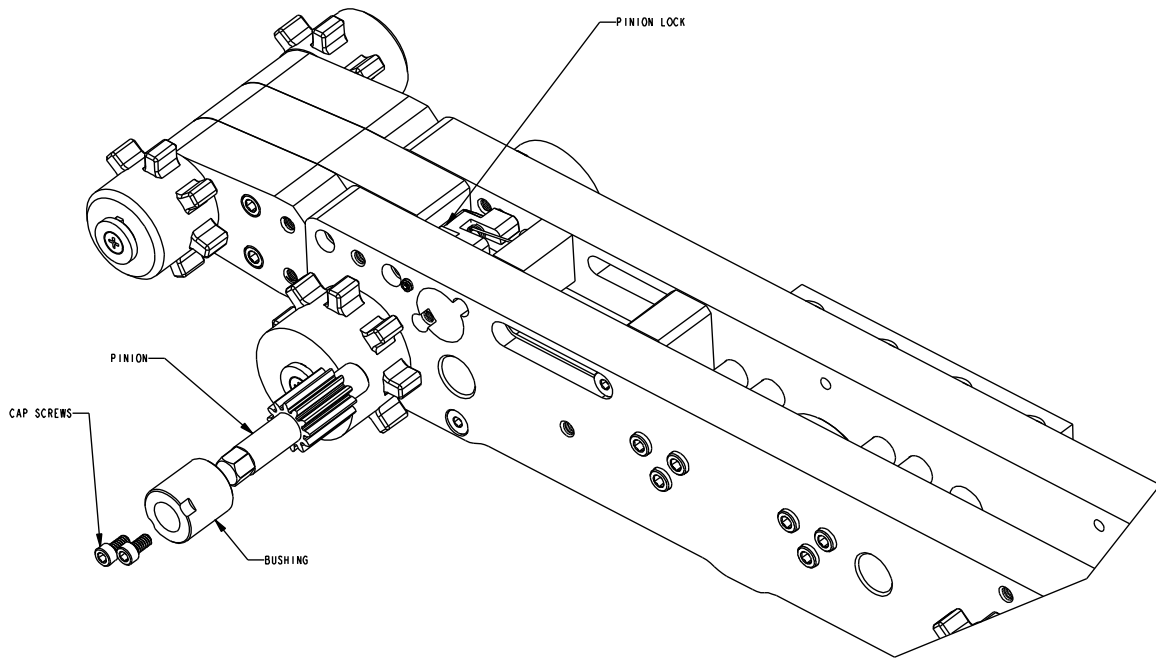
1. Install the long end of the torsion spring into the small hole on the spring block (see figure below)
2. Install the pinion lock so the angled cuts are upward and they are facing as shown in the figure below.



3. Line up the hole on the pinion lock with the loop on the torsion spring and the pin hole and then insert the pin through the pin hole to capture them. (see figure below)



4. Insert 2 set screws using blue loctite to lock the pin in place (set screws shown in figure above)
5. Angle the pinion lock back as shown in the figure below and insert the pinion and bushing and 2 cap screws to hold it in place. Use blue loctite on the 2 cap screws. (see figure below)



6. Install the track and adjust the tension using the hex on the end of the pinion.
7. Install the plastic side covers