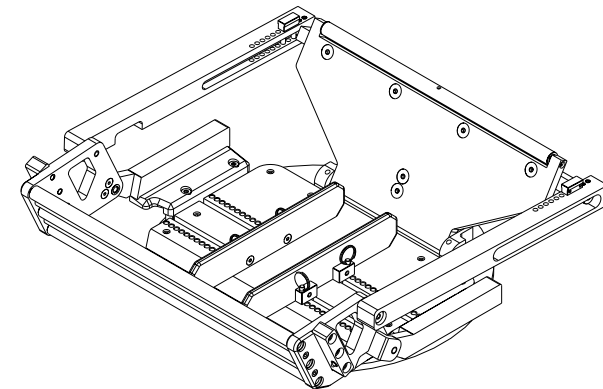


**BILL OF MATERIAL (CURRENT LEVEL)**

| ITEM | PT/ASSY | DESCRIPTION                    | TYPE | QTY. |
|------|---------|--------------------------------|------|------|
| 1    | 22564   | LAZY SUSAN BOTTOM RING         | PART | 1    |
| 2    | 22575   | LAZY SUSAN CENTER              | PART | 1    |
| 3    | 22611   | T2 LATCH MOUNT                 | PART | 1    |
| 4    | 23140   | T2W RAMP BRACE                 | PART | 1    |
| 5    | 23142   | T2 REAR PIVOT PIN              | PART | 2    |
| 6    | 23380   | 5/8"-16 CASTLE NUT             | PART | 1    |
| 7    | 23430   | T1 CRADLE WASHER               | PART | 2    |
| 8    | 23684   | T2W V2 BACK GATE               | PART | 1    |
| 9    | 23687   | FRONT PIVOT PIN                | PART | 2    |
| 10   | 23688   | LS STOP BLOCK                  | PART | 2    |
| 11   | 23691   | T2W CRADLE INNER ROLLER        | PART | 1    |
| 12   | 23692   | T2W V2 CRADLE OUTER ROLLER     | PART | 1    |
| 13   | 23695   | T2W V2 WHEEL PLATE             | PART | 1    |
| 14   | 23709   | PIVOT SUPPORT BLOCK            | PART | 2    |
| 15   | 23760   | T2W2 LATCH                     | PART | 1    |
| 16   | 23761   | T2W2 RAMP PIVOT RIGHT          | PART | 1    |
| 17   | 23762   | T2W2 RAMP PIVOT LEFT           | PART | 1    |
| 18   | 23765   | T2W2 ROLLER PIN                | PART | 2    |
| 19   | 23770   | T2W2 CRADLE SUPPORT BLOCK      | PART | 2    |
| 20   | 23773   | T2V2 LAZY SUSAN LINK (R)       | PART | 1    |
| 21   | 23774   | T2D2 LAZY SUSAN LINK (L)       | PART | 1    |
| 22   | 23775   | T2D2 FRONT ARM RIGHT           | PART | 1    |
| 23   | 23776   | T2D2 FRONT ARM LEFT            | PART | 1    |
| 24   | 23780   | STEEL CRADLE LATCH CLASP       | PART | 1    |
| 25   | 23858   | CRADLE ADJ. CAP FOR 1/4" PIN   | PART | 2    |
| 26   | 23859   | 1/4" DOWEL PIN W FLATS         | PART | 4    |
| 27   | 24035   | T2V2 TIRE GUIDE PLATE          | PART | 2    |
| 28   | 24036   | T2W2 TIRE GUIDE PIN BLOCK      | PART | 4    |
| 29   | 24037   | T2W2 TIRE SPACER PLATE         | PART | 1    |
| 30   | 24166   | CRADLE RISER RIGHT             | PART | 1    |
| 31   | 24167   | CRADLE RISER LEFT              | PART | 1    |
| 32   | 24168   | T2W2 SS FRONT ROLLER           | PART | 2    |
| 33   | 24169   | T2W2 FRONT STEEL ROLLER        | PART | 1    |
| 34   | 24170   | T2W V2 FRONT BRACE             | PART | 2    |
| 35   | 24282   | T2W2 RIGHT FRONT PIVOT         | PART | 1    |
| 36   | 24283   | T2W2 LEFT FRONT PIVOT          | PART | 1    |
| 37   | 91770   | .375"ID X .02"TH WASHER        | PART | 4    |
| 38   | 92041   | 3/8"-16 X 7/8" L CAP SCREW     | PART | 6    |
| 39   | 92224   | 5/16"-18 X 1/2" L SS SET SCREW | PART | 4    |

|    |       |                                       |      |     |
|----|-------|---------------------------------------|------|-----|
| 40 | 92289 | SS 1/4"-20, 5/16" DIA. SHLD X 3/8" L  | PART | 4   |
| 41 | 92290 | 1/4" DIA. X 1-1/8" USE QUICK RELEASE  | PART | 4   |
| 42 | 92524 | 8-32 UNC X 1/8 SET SCREW              | PART | 4   |
| 43 | 92646 | .500 X .750" SHOULDER BOLT            | PART | 4   |
| 44 | 95003 | 1/4"-20 X 3/4" FLAT HEAD              | PART | 16  |
| 45 | 95006 | 1/4"-20 X 1" FLAT HEAD                | PART | 4   |
| 46 | 95016 | 1/4"-20 X 5/8" SOCKET CAP             | PART | 2   |
| 47 | 95017 | 1/4"-20 X 1/2" SOCKET CAP             | PART | 4   |
| 48 | 95022 | 10-24 X 3/8"L SS SET SCREW            | PART | 2   |
| 49 | 95024 | 3/8" NEEDLE ROLLER BEARING            | PART | 2   |
| 50 | 95041 | SPRING PLUNGER                        | PART | 2   |
| 51 | 95095 | 10-24 X 1/4"L SET SCREW               | PART | 2   |
| 52 | 95117 | 1/4"-20 X 3/4" SOCKET CAP             | PART | 8   |
| 53 | 95149 | 5/8" THRUST WASHER, .032" TH.         | PART | 2   |
| 54 | 95150 | 5/8" THRUST ROLLER BEARING            | PART | 1   |
| 55 | 95153 | 1/2" ROLLER BEARING                   | PART | 6   |
| 56 | 95172 | 1/4" HARDENED STEEL BALL              | PART | 113 |
| 57 | 95177 | 5/32" X 1.5" SS COTTER PIN            | PART | 1   |
| 58 | 95188 | 3/8"-24 X 1.0" SELF LOCK S.S.         | PART | 1   |
| 59 | 95338 | 3/8"-16 X 1-1/4" L FLAT HEAD          | PART | 5   |
| 60 | 95339 | 3/8" X 2-1/4" SB                      | PART | 1   |
| 61 | 95343 | 5/16"-18X1-1/4"L CAP SCREW            | PART | 4   |
| 62 | 95346 | SPLIT LOCK WASHER FOR 3/8" SCREW      | PART | 1   |
| 63 | 95472 | 3/8"-16 X 7/8" L FLAT HEAD SCREW      | PART | 1   |
| 64 | 95481 | 1/4"-20 X 7/8" FLAT SOCKET HEAD       | PART | 4   |
| 65 | 95615 | 3/8"-16 X 1-1/2"L LOW SOCKE. HD SCREW | PART | 4   |



*A Touch of Brass*  
A TOUCH OF BRASS INC

13832 MAGNOLIA AVE.  
CHINO, CA 91710-7027  
909-464-1000

**T2W2 CRADLE XL**

DWG. NO. **09992**

REV **C**

UNLESS OTHERWISE SPECIFIED, DIMENSIONS ARE IN INCHES.

SCALE 0.100

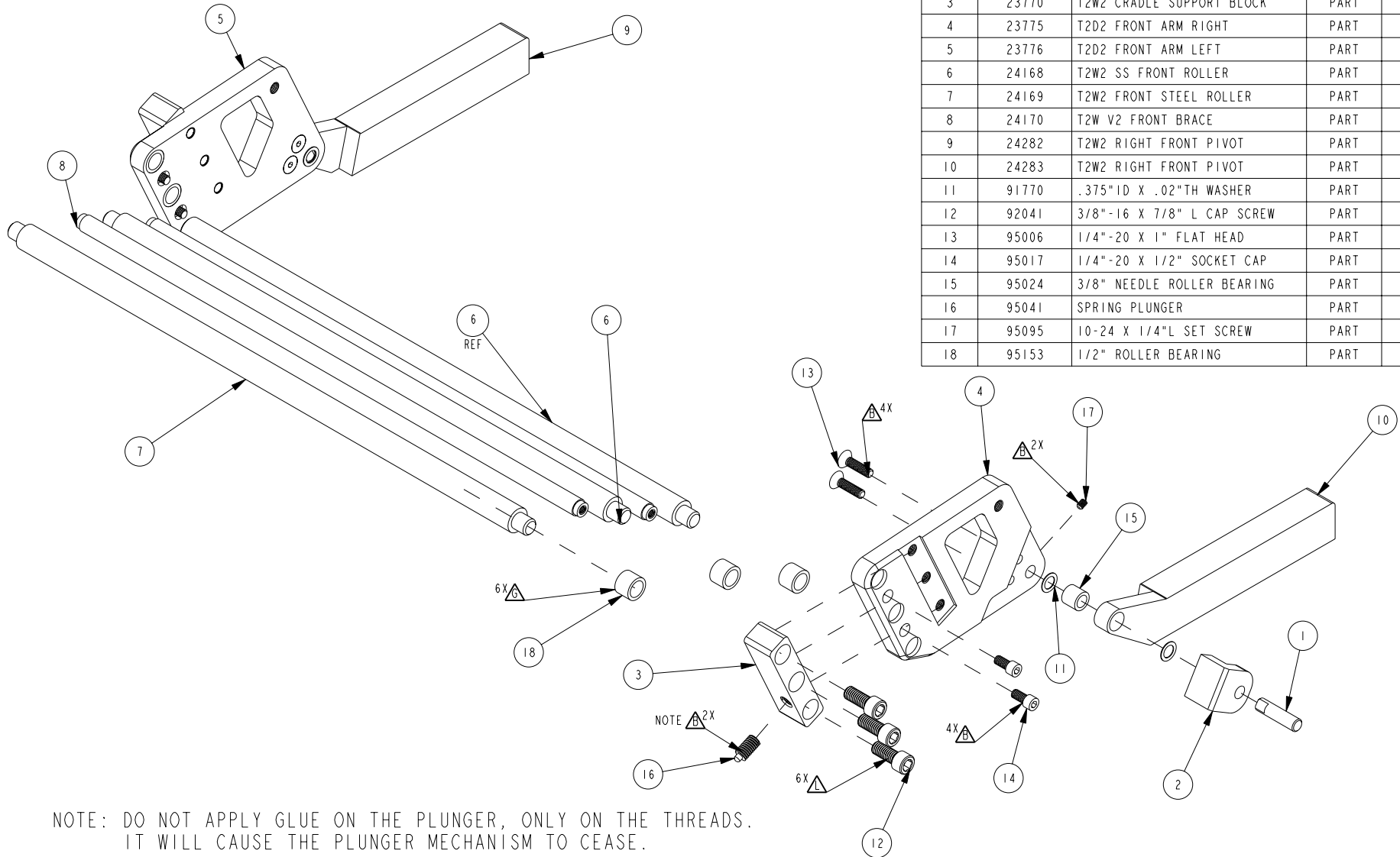
APPR.

SHEET 1 OF 6

- APPLY GREASE
- BLUE REMOVABLE LOCTITE
- LOCTITE JOINT (GREEN)

**BILL OF MATERIAL (CURRENT LEVEL)**

| ITEM | PT/ASSY | DESCRIPTION                | TYPE | QTY. |
|------|---------|----------------------------|------|------|
| 1    | 23687   | FRONT PIVOT PIN            | PART | 2    |
| 2    | 23709   | PIVOT SUPPORT BLOCK        | PART | 2    |
| 3    | 23770   | T2W2 CRADLE SUPPORT BLOCK  | PART | 2    |
| 4    | 23775   | T2D2 FRONT ARM RIGHT       | PART | 1    |
| 5    | 23776   | T2D2 FRONT ARM LEFT        | PART | 1    |
| 6    | 24168   | T2W2 SS FRONT ROLLER       | PART | 2    |
| 7    | 24169   | T2W2 FRONT STEEL ROLLER    | PART | 1    |
| 8    | 24170   | T2W V2 FRONT BRACE         | PART | 2    |
| 9    | 24282   | T2W2 RIGHT FRONT PIVOT     | PART | 1    |
| 10   | 24283   | T2W2 RIGHT FRONT PIVOT     | PART | 1    |
| 11   | 91770   | .375" ID X .02" TH WASHER  | PART | 4    |
| 12   | 92041   | 3/8"-16 X 7/8" L CAP SCREW | PART | 6    |
| 13   | 95006   | 1/4"-20 X 1" FLAT HEAD     | PART | 4    |
| 14   | 95017   | 1/4"-20 X 1/2" SOCKET CAP  | PART | 4    |
| 15   | 95024   | 3/8" NEEDLE ROLLER BEARING | PART | 2    |
| 16   | 95041   | SPRING PLUNGER             | PART | 2    |
| 17   | 95095   | 10-24 X 1/4" L SET SCREW   | PART | 2    |
| 18   | 95153   | 1/2" ROLLER BEARING        | PART | 6    |



NOTE: DO NOT APPLY GLUE ON THE PLUNGER, ONLY ON THE THREADS.  
IT WILL CAUSE THE PLUNGER MECHANISM TO CEASE.

*A Touch of Brass*  
A TOUCH OF BRASS INC

13832 MAGNOLIA AVE.  
CHINO, CA 91710-7027  
909-464-1000

T2W2 CRADLE XL

DWG. NO. 09992

REV C

UNLESS OTHERWISE SPECIFIED, DIMENSIONS ARE IN INCHES.

SCALE 0.250

APPR.

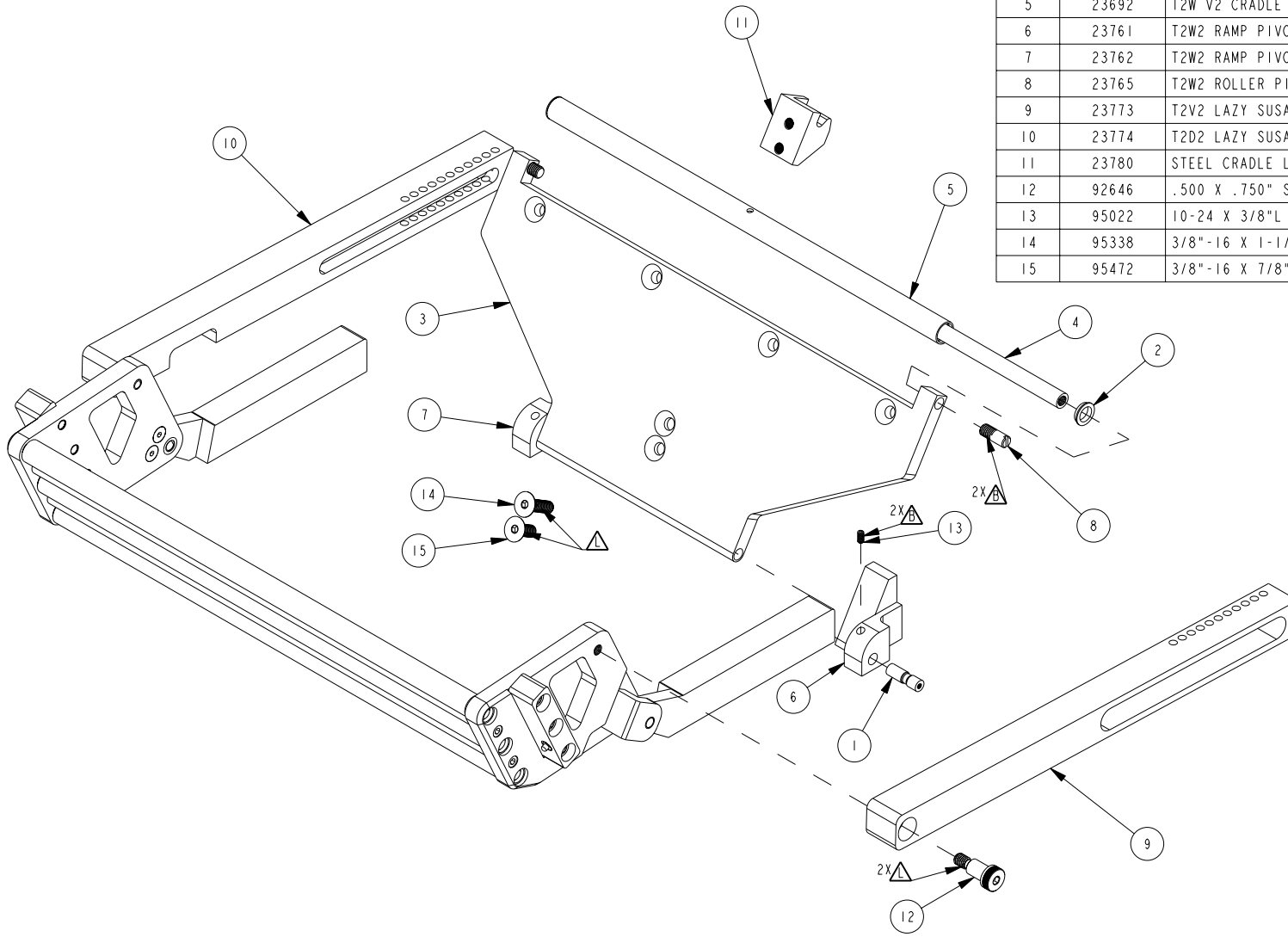
SHEET 2 OF 6

△ BLUE REMOVABLE LOCTITE

△ LOCTITE JOINT (GREEN)

### BILL OF MATERIAL (CURRENT LEVEL)

| ITEM | PT/ASSY | DESCRIPTION                      | TYPE | QTY. |
|------|---------|----------------------------------|------|------|
| 1    | 23142   | T2 REAR PIVOT PIN                | PART | 2    |
| 2    | 23430   | T1 CRADLE WASHER                 | PART | 2    |
| 3    | 23684   | T2W V2 BACK GATE                 | PART | 1    |
| 4    | 23691   | T2W CRADLE INNER ROLLER          | PART | 1    |
| 5    | 23692   | T2W V2 CRADLE OUTER ROLLER       | PART | 1    |
| 6    | 23761   | T2W2 RAMP PIVOT RIGHT            | PART | 1    |
| 7    | 23762   | T2W2 RAMP PIVOT LEFT             | PART | 1    |
| 8    | 23765   | T2W2 ROLLER PIN                  | PART | 2    |
| 9    | 23773   | T2V2 LAZY SUSAN LINK (R)         | PART | 1    |
| 10   | 23774   | T2D2 LAZY SUSAN LINK (L)         | PART | 1    |
| 11   | 23780   | STEEL CRADLE LATCH CLASP         | PART | 1    |
| 12   | 92646   | .500 X .750" SHOULDER BOLT       | PART | 2    |
| 13   | 95022   | 10-24 X 3/8" L SS SET SCREW      | PART | 2    |
| 14   | 95338   | 3/8"-16 X 1-1/4" L FLAT HEAD     | PART | 1    |
| 15   | 95472   | 3/8"-16 X 7/8" L FLAT HEAD SCREW | PART | 1    |



*A Touch of Brass*  
A TOUCH OF BRASS INC

13832 MAGNOLIA AVE.  
CHINO, CA 91710-7027  
909-464-1000

## T2W2 CRADLE XL

DWG. NO. 09992

REV C

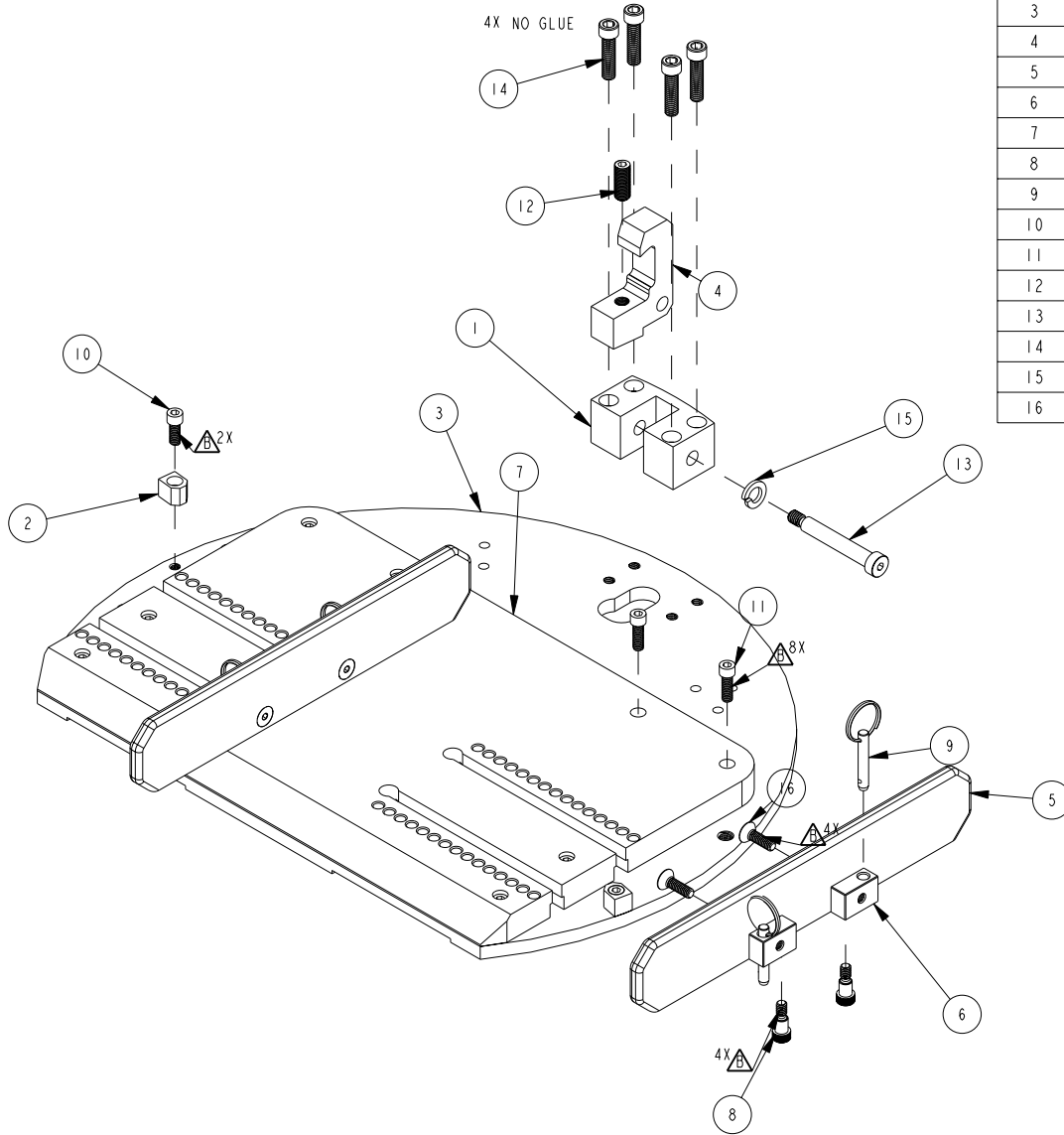
UNLESS OTHERWISE SPECIFIED, DIMENSIONS ARE IN INCHES.

SCALE 0.200

APPR.

SHEET 3 OF 6

△ BLUE REMOVABLE LOCTITE



**BILL OF MATERIAL (CURRENT LEVEL)**

| ITEM | PT/ASSY | DESCRIPTION                          | TYPE | QTY. |
|------|---------|--------------------------------------|------|------|
| 1    | 22611   | T2 LATCH MOUNT                       | PART | 1    |
| 2    | 23688   | LS STOP BLOCK                        | PART | 2    |
| 3    | 23695   | T2W V2 WHEEL PLATE                   | PART | 1    |
| 4    | 23760   | T2W2 LATCH                           | PART | 1    |
| 5    | 24035   | T2V2 TIRE GUIDE PLATE                | PART | 2    |
| 6    | 24036   | T2W2 TIRE GUIDE PIN BLOCK            | PART | 4    |
| 7    | 24037   | T2W2 TIRE SPACER PLATE               | PART | 1    |
| 8    | 92289   | SS 1/4"-20, 5/16" DIA. SHLD X 3/8" L | PART | 4    |
| 9    | 92290   | 1/4" DIA. X 1-1/8" USE QUICK RELEASE | PART | 4    |
| 10   | 95016   | 1/4"-20 X 5/8" SOCKET CAP            | PART | 2    |
| 11   | 95117   | 1/4"-20 X 3/4" SOCKET CAP            | PART | 8    |
| 12   | 95188   | 3/8"-24 X 1.0" SELF LOCK S.S.        | PART | 1    |
| 13   | 95339   | 3/8" X 2-1/4" SB                     | PART | 1    |
| 14   | 95343   | 5/16"-18X1-1/4"L CAP SCREW           | PART | 4    |
| 15   | 95346   | SPLIT LOCK WASHER FOR 3/8" SCREW     | PART | 1    |
| 16   | 95481   | 1/4"-20 X 7/8" FLAT SOCKET HEAD      | PART | 4    |

*A Touch of Brass*  
A TOUCH OF BRASS INC

13832 MAGNOLIA AVE.  
CHINO, CA 91710-7027  
909-464-1000

T2W2 CRADLE XL

DWG. NO. 09992



REV C

UNLESS OTHERWISE SPECIFIED, DIMENSIONS ARE IN INCHES.

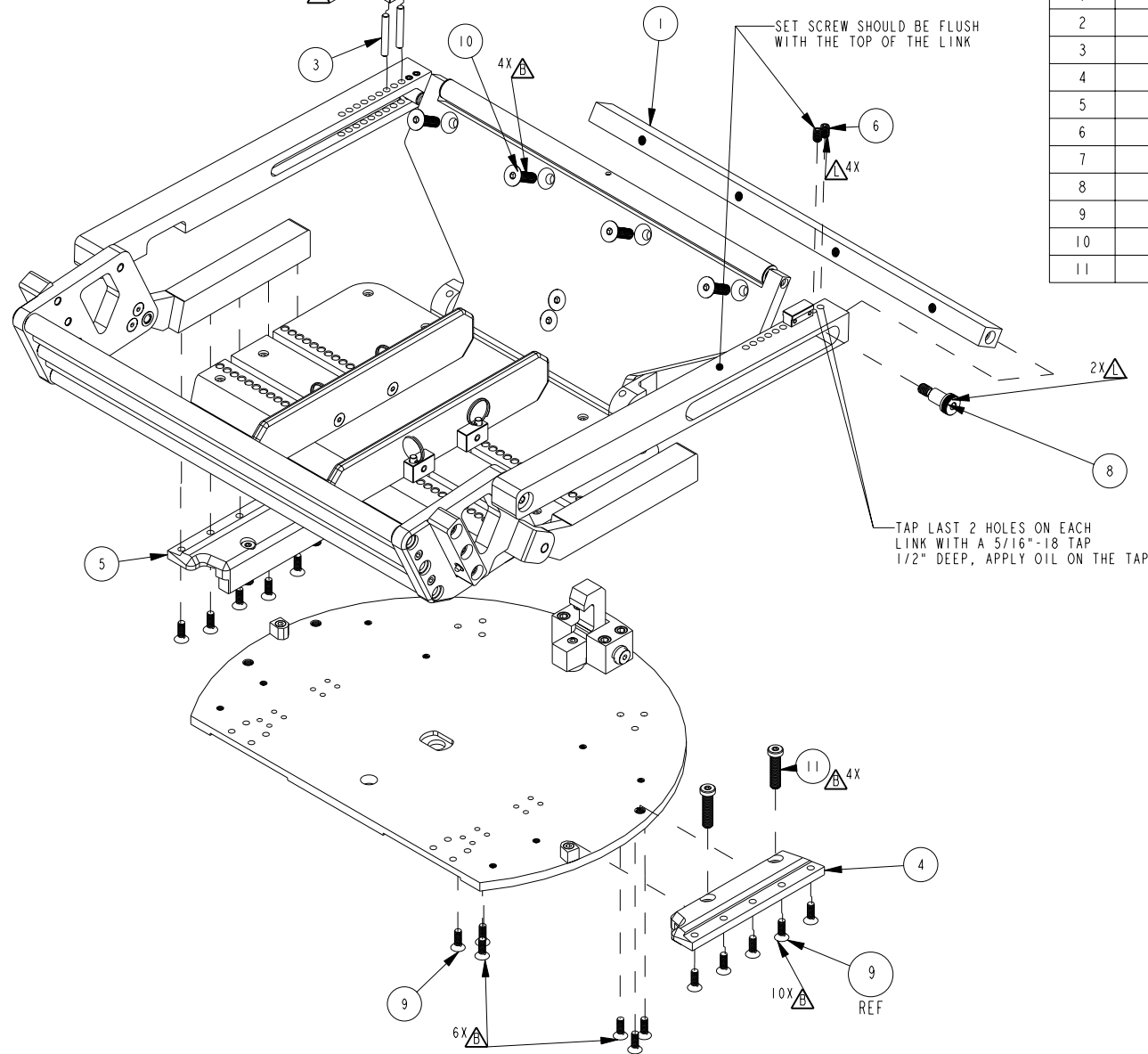
SCALE 0.220

APPR.

SHEET 4 OF 6

 LOCTITE JOINT (GREEN)  
 BLUE REMOVABLE LOCTITE

| BILL OF MATERIAL (CURRENT LEVEL) |         |  |      |      |
|----------------------------------|---------|--|------|------|
| ITEM                             | PT/ASSY | DESCRIPTION                            | TYPE | QTY. |
| 1                                | 23140   | T2W RAMP BRACE                         | PART | 1    |
| 2                                | 23858   | CRADLE ADJ. CAP FOR 1/4" PIN           | PART | 2    |
| 3                                | 23859   | 1/4" DOWEL PIN W FLATS                 | PART | 4    |
| 4                                | 24166   | CRADLE RISER RIGHT                     | PART | 1    |
| 5                                | 24167   | CRADLE RISER LEFT                      | PART | 1    |
| 6                                | 92224   | 5/16"-18 X 1/2" L SS SET SCREW         | PART | 4    |
| 7                                | 92524   | 8-32 UNC X 1/8" SET SCREW              | PART | 4    |
| 8                                | 92646   | .500 X .750" SHOULDER BOLT             | PART | 2    |
| 9                                | 95003   | 1/4"-20 X 3/4" FLAT HEAD               | PART | 16   |
| 10                               | 95338   | 3/8"-16 X 1-1/4" L FLAT HEAD           | PART | 4    |
| 11                               | 95615   | 3/8"-16 X 1-1/2" L LOW SOCKE. HD SCREW | PART | 4    |

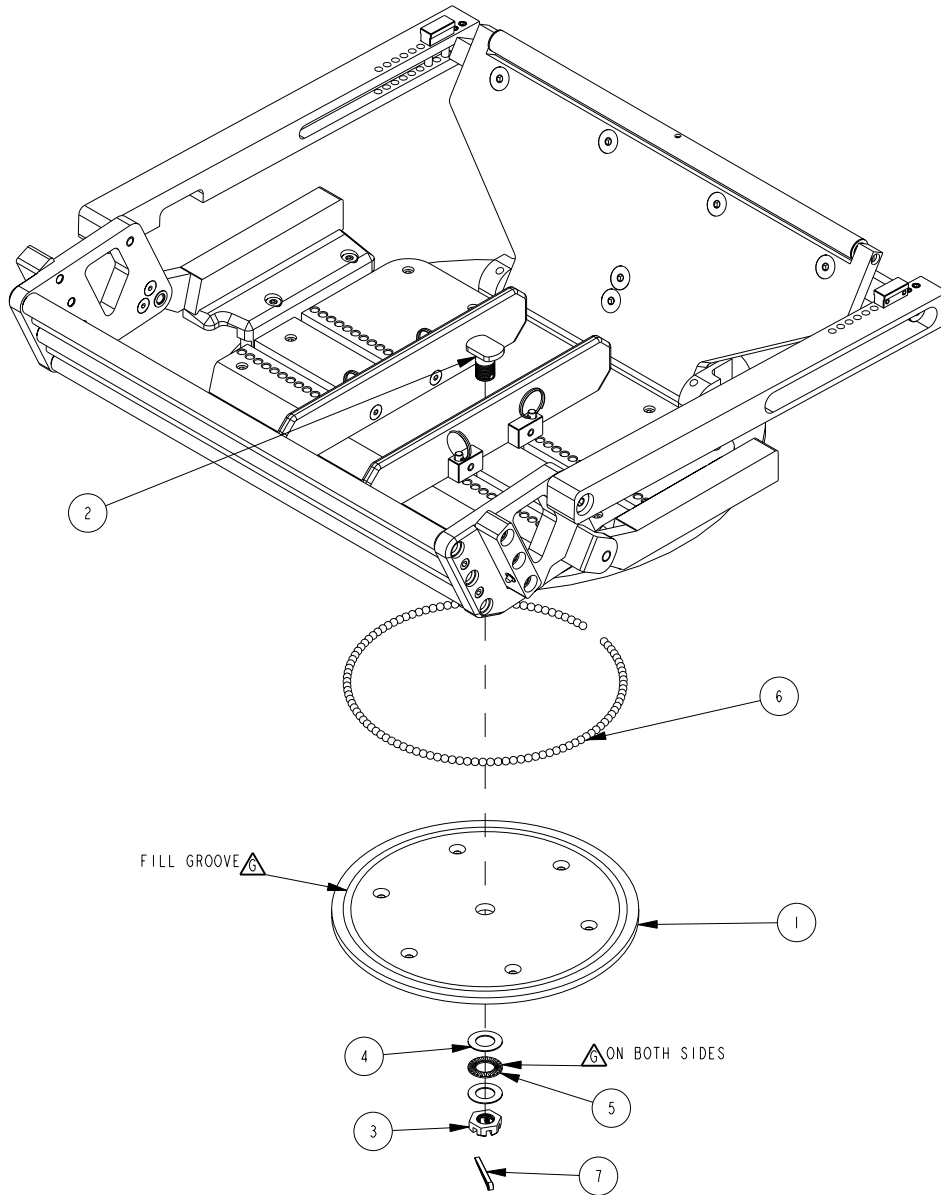


*A Touch of Brass*  
 A TOUCH OF BRASS INC  
 13832 MAGNOLIA AVE.  
 CHINO, CA 91710-7027  
 909-464-1000

T2W2 CRADLE XL

DWG. NO. 09992  
 SCALE 0.160  
 APPR.  
 SHEET 5 OF 6  
 REV C  
 UNLESS OTHERWISE SPECIFIED, DIMENSIONS ARE IN INCHES.

⚠️ APPLY GREASE



**BILL OF MATERIAL (CURRENT LEVEL)**

| ITEM | PT/ASSY | DESCRIPTION                   | TYPE | QTY. |
|------|---------|-------------------------------|------|------|
| 1    | 22564   | LAZY SUSAN BOTTOM RING        | PART | 1    |
| 2    | 22575   | LAZY SUSAN CENTER             | PART | 1    |
| 3    | 23380   | 5/8"-16 CASTLE NUT            | PART | 1    |
| 4    | 95149   | 5/8" THRUST WASHER, .032" TH. | PART | 2    |
| 5    | 95150   | 5/8" THRUST ROLLER BEARING    | PART | 1    |
| 6    | 95172   | 1/4" HARDENED STEEL BALL      | PART | 113  |
| 7    | 95177   | 5/32" X 1.5" SS COTTER PIN    | PART | 1    |

*A Touch of Brass*  
A TOUCH OF BRASS INC

13832 MAGNOLIA AVE.  
CHINO, CA 91710-7027  
909-464-1000

T2W2 CRADLE XL

DWG. NO. 09992

REV C

UNLESS OTHERWISE SPECIFIED, DIMENSIONS ARE IN INCHES.

SCALE 0.160

APPR.

SHEET 6 OF 6