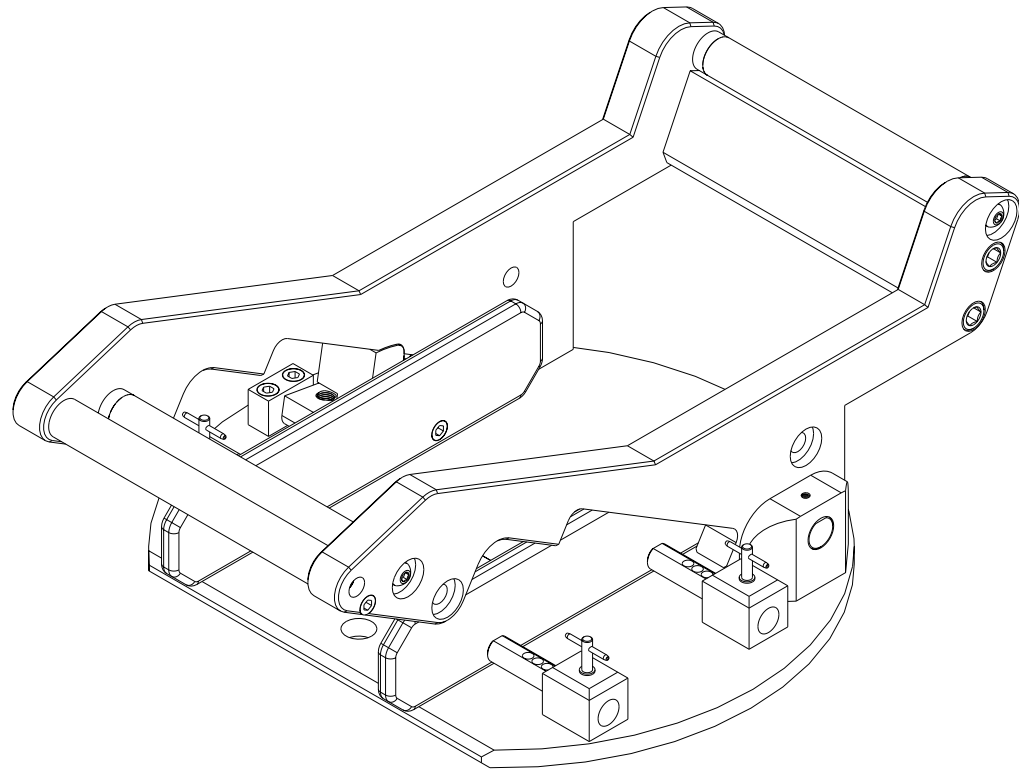


BILL OF MATERIAL (CURRENT LEVEL)

ITEM	PT/ASSY	DESCRIPTION	TYPE	QTY.
1	22225	TUG ROLLER AXLE	PART	2
2	22575	LAZY SUSAN CENTER	PART	1
3	23380	5/8"-16 CASTLE NUT	PART	1
4	23890	TIX3 LAZY SUSAN BOTTOM RING	PART	1
5	23894	TIX3 LAZY SUSAN WHEEL PLATE	PART	1
6	23895	TIX3 CRADLE PIVOT	PART	2
7	23898	TIX3 CRADLE BACK PLATE	PART	1
8	23899	TIX3 CRADLE BRACE	PART	1
9	23900	TIX3 CRADLE FRONT ROLLER	PART	1
10	23901	TIX3 LOCK PIVOT SPRING BLOCK	PART	1
11	23902	TIX3 LOCK PIVOT INNER BLOCK	PART	1
12	23903	TIX3 CRADLE LOCK L	PART	1
13	23905	TIX3 CRADLE SPACER GUIDE	PART	4
14	23906	TIX3 CRADLE SPACER ROD	PART	4
15	23907	TIX3 TIRE GUIDE PLATE	PART	2
16	23908	TIX3 CRADLE ROLLER ROD	PART	2
17	23909	TIX3 CRADLE BACK ROLLER	PART	2
18	23918	5/8" DIA DOWEL W FLAT	PART	2
19	23945	TIX3 ROLLER BUSHING	PART	4
20	23981	.625 ID X 1.0 OD PLASTIC SPACER	PART	2
21	24070	TIX3 STEMME SIDE PLATE R	PART	1
22	24074	TIX3 STEMME SIDE PLATE L	PART	1
23	92041	3/8"-16 X 7/8" L CAP SCREW	PART	4
24	92209	1/4"-20 X 5/8" FLAT SOCKET	PART	2
25	92255	5/16"-18 X 1" L FLAT HEAD SCREW	PART	4
26	95009	10-24 X 3/4" FLAT HEAD	PART	8
27	95013	RH TORSION SPRING, 180 DEG	PART	1
28	95017	1/4"-20 X 1/2" SOCKET CAP	PART	4
29	95024	3/8" NEEDLE ROLLER BEARING	PART	2
30	95041	SPRING PLUNGER	PART	1

31	95095	10-24 X 1/4"L SET SCREW	PART	2
32	95117	1/4"-20 X 3/4" SOCKET CAP	PART	4
33	95149	5/8" THRUST WASHER, .032" TH.	PART	2
34	95150	5/8" THRUST ROLLER BEARING	PART	1
35	95172	1/4" HARDENED STEEL BALL	PART	75
36	95177	5/32" X 1.5" SS COTTER PIN	PART	1
37	95188	3/8"-24 X .5" SELF LOCK S.S.	PART	1
38	95322	5/8" ID, 5/8" WIDTH BEARING	PART	2
39	95454	1/4" DIA X 2"L SHOULDER BOLT	PART	1
40	95496	3/16" DIA. T-HANDLE	PART	4
41	95647	1/4"-20, 5/8"L HEX DRIVE W/THR LCK	PART	4



A Touch of Brass
A TOUCH OF BRASS INC

13832 MAGNOLIA AVE.
CHINO, CA 91710-7027
909-464-1000

TIX3 LAZY SUSAN ASSEMBLY

DWG. NO. **09979**

REV
K

UNLESS OTHERWISE
SPECIFIED, DIMENSIONS
ARE IN INCHES.

SCALE **0.300**

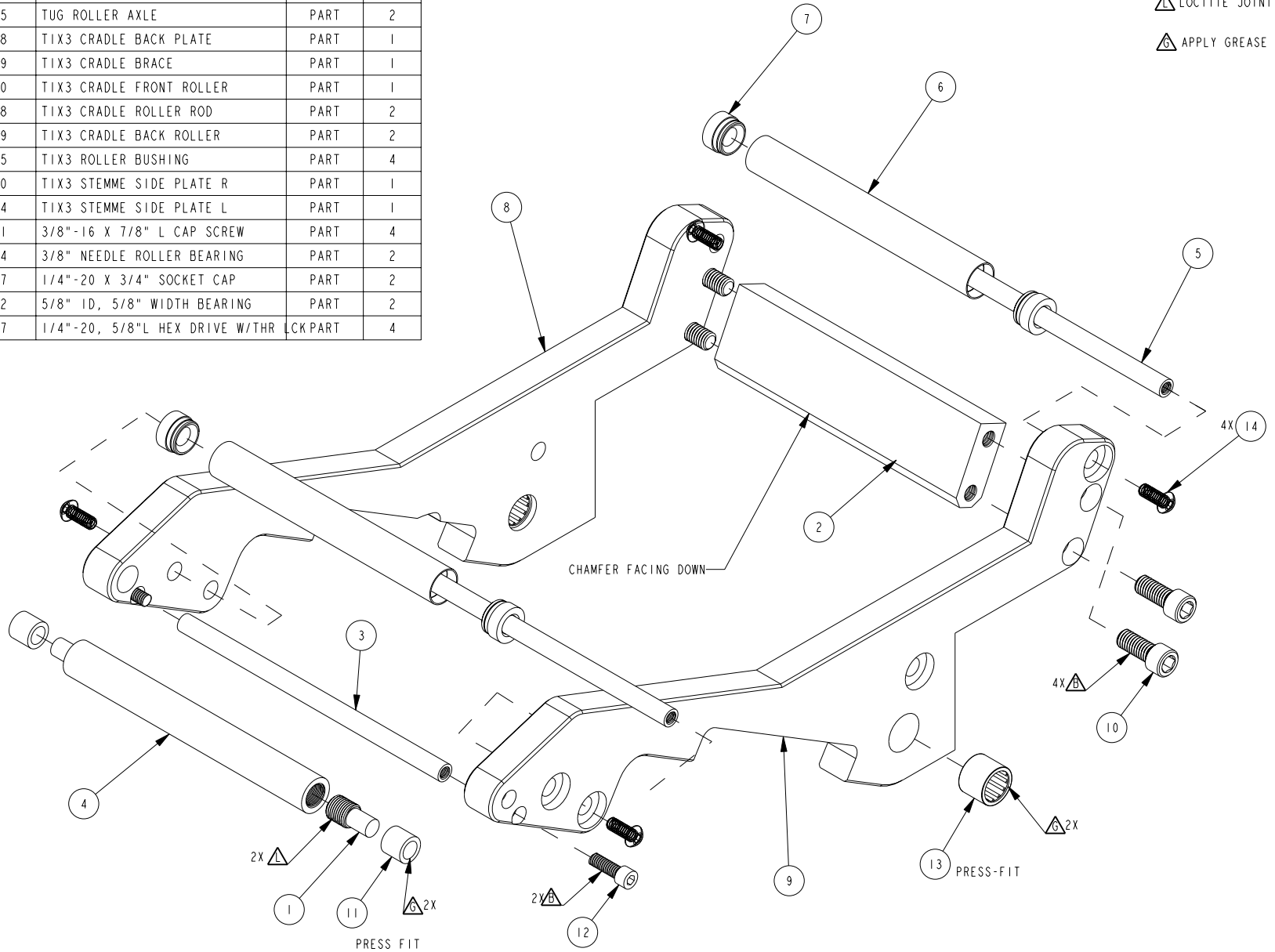
APPR.

SHEET **1** OF **6**

BILL OF MATERIAL (CURRENT LEVEL)

ITEM	PT/ASSY	DESCRIPTION	TYPE	QTY.
1	22225	TUG ROLLER AXLE	PART	2
2	23898	TIX3 CRADLE BACK PLATE	PART	1
3	23899	TIX3 CRADLE BRACE	PART	1
4	23900	TIX3 CRADLE FRONT ROLLER	PART	1
5	23908	TIX3 CRADLE ROLLER ROD	PART	2
6	23909	TIX3 CRADLE BACK ROLLER	PART	2
7	23945	TIX3 ROLLER BUSHING	PART	4
8	24070	TIX3 STEMME SIDE PLATE R	PART	1
9	24074	TIX3 STEMME SIDE PLATE L	PART	1
10	92041	3/8"-16 X 7/8" L CAP SCREW	PART	4
11	95024	3/8" NEEDLE ROLLER BEARING	PART	2
12	95117	1/4"-20 X 3/4" SOCKET CAP	PART	2
13	95322	5/8" ID, 5/8" WIDTH BEARING	PART	2
14	95647	1/4"-20, 5/8"L HEX DRIVE W/THR LCK PART	LCK PART	4


- BLUE REMOVABLE LOCTITE
- LOCTITE JOINT (GREEN)
- APPLY GREASE



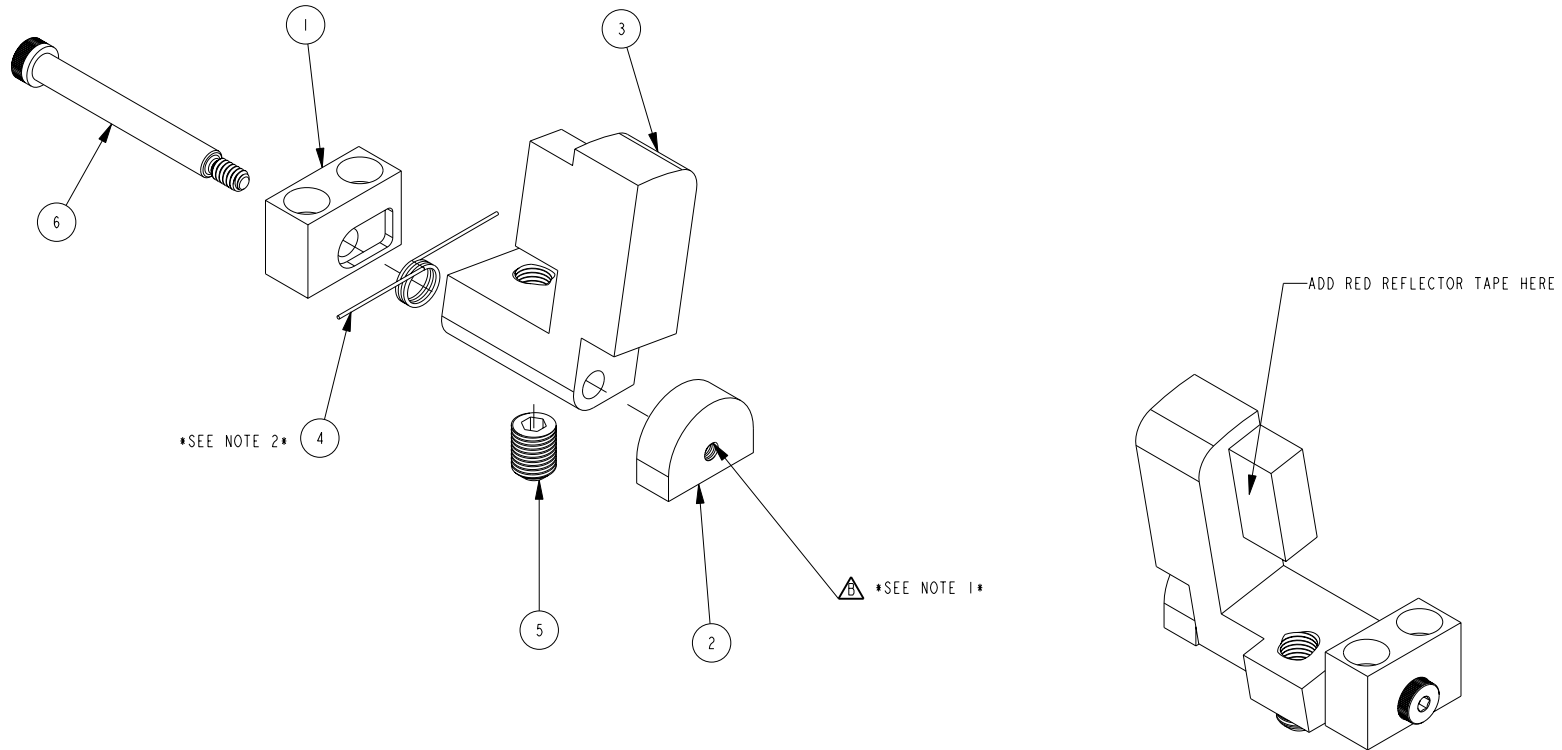
A Touch of Brass
A TOUCH OF BRASS INC
13832 MAGNOLIA AVE.
CHINO, CA 91710-7027
909-464-1000

TIX3 LAZY SUSAN ASSEMBLY

DWG. NO. 09979		REV K	UNLESS OTHERWISE SPECIFIED, DIMENSIONS ARE IN INCHES.
SCALE 0.350	APPR.	SHEET 2 OF 6	

 BLUE REMOVABLE LOCTITE

BILL OF MATERIAL (CURRENT LEVEL)				
ITEM	PT/ASSY	DESCRIPTION	TYPE	QTY.
1	23901	TIX3 LOCK PIVOT SPRING BLOCK	PART	1
2	23902	TIX3 LOCK PIVOT INNER BLOCK	PART	1
3	23903	TIX3 CRADLE LOCK L	PART	1
4	95013	RH TORSION SPRING, 180 DEG	PART	1
5	95188	3/8"-24 X .5" SELF LOCK S.S.	PART	1
6	95454	1/4" DIA X 2"L SHOULDER BOLT	PART	1



NOTE:

1. GLUE FOR SHOULDER BOLTS SHOULD BE APPLIED ON MATING PART. DO NOT APPLY TO SHOULDER BOLT THREAD THIS WILL CAUSE THE THE SPRING MECHANISM TO CEASE.
2. CLIP SPRING LEGS TO FIT IN SPRING BLOCK POCKET

A Touch of Brass
A TOUCH OF BRASS INC

13832 MAGNOLIA AVE.
CHINO, CA 91710-7027
909-464-1000

TIX3 LAZY SUSAN ASSEMBLY

DWG. NO. 09979




REV K

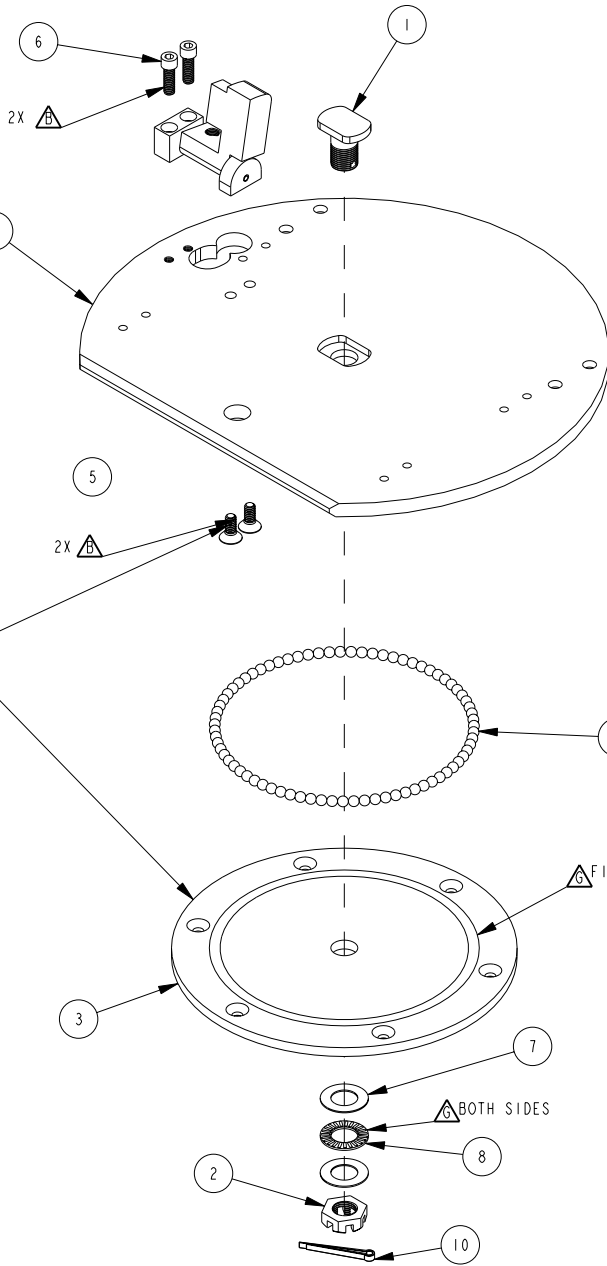
UNLESS OTHERWISE SPECIFIED, DIMENSIONS ARE IN INCHES.

SCALE 0.625

APPR.

SHEET 3 OF 6

-  BLUE REMOVABLE LOCTITE
-  LOCTITE JOINT (GREEN)
-  APPLY GREASE



BILL OF MATERIAL (CURRENT LEVEL)

ITEM	PT/ASSY	DESCRIPTION	TYPE	QTY.
1	22575	LAZY SUSAN CENTER	PART	1
2	23380	5/8"-16 CASTLE NUT	PART	1
3	23890	TIX3 LAZY SUSAN BOTTOM RING	PART	1
4	23894	TIX3 LAZY SUSAN WHEEL PLATE	PART	1
5	92209	1/4"-20 X 5/8" FLAT SOCKET	PART	2
6	95117	1/4"-20 X 3/4" SOCKET CAP	PART	2
7	95149	5/8" THRUST WASHER, .032" TH.	PART	2
8	95150	5/8" THRUST ROLLER BEARING	PART	1
9	95172	1/4" HARDENED STEEL BALL	PART	75
10	95177	5/32" X 1.5" SS COTTER PIN	PART	1

INSTALL THESE SCREWS BEFORE
INSTALLING THE BOTTOM PLATE.
NO ACCESS TO SCREWS.

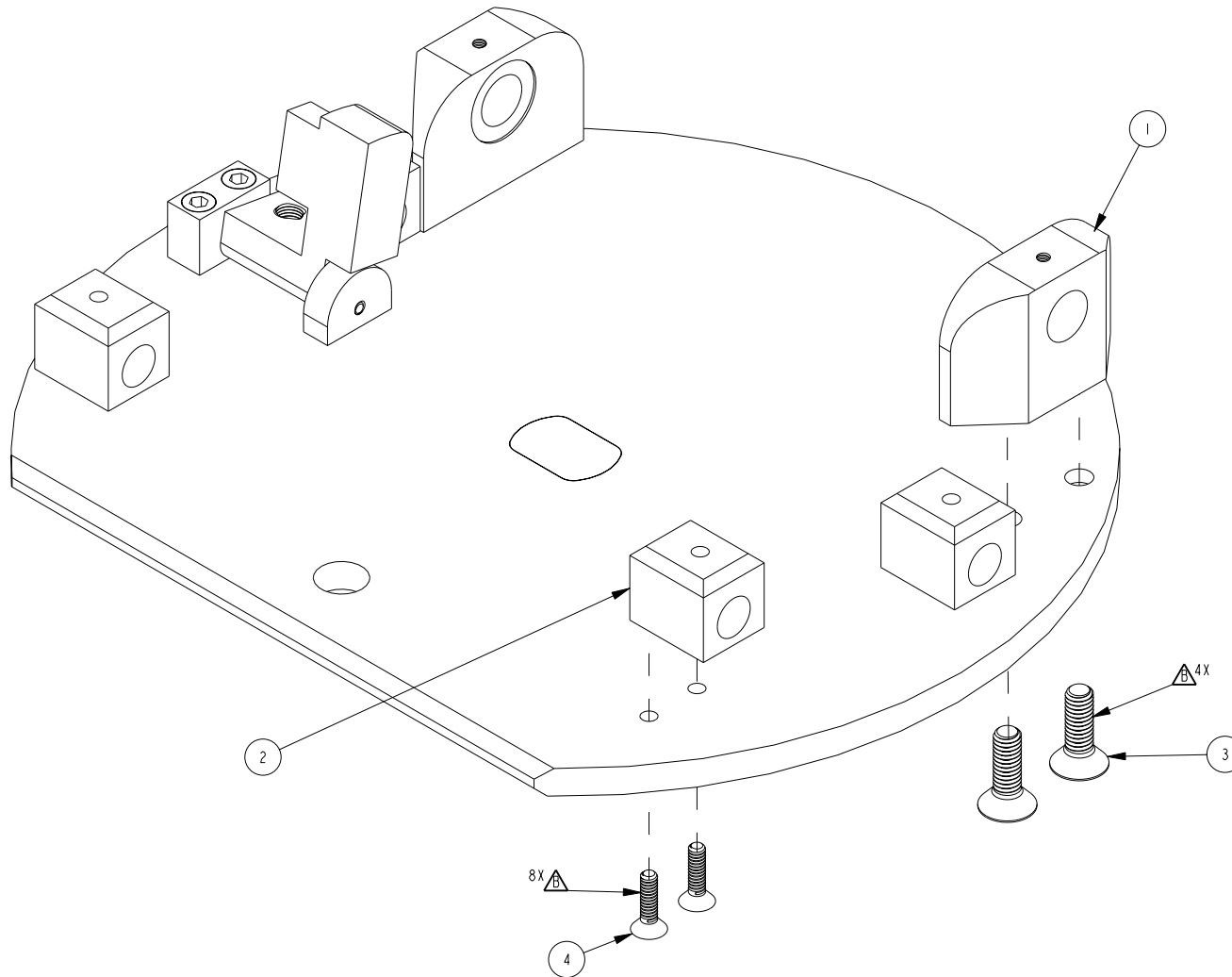
 FILL GROOVE

 BOTH SIDES

△ BLUE REMOVABLE LOCTITE

BILL OF MATERIAL (CURRENT LEVEL)

ITEM	PT/ASSY	DESCRIPTION	TYPE	QTY.
1	23895	TIX3 CRADLE PIVOT	PART	2
2	23905	TIX3 CRADLE SPACER GUIDE	PART	4
3	92255	5/16"-18 X 1" L FLAT HEAD SCREW	PART	4
4	95009	10-24 X 3/4" FLAT HEAD	PART	8



A Touch of Brass
A TOUCH OF BRASS INC

13832 MAGNOLIA AVE.
CHINO, CA 91710-7027
909-464-1000

TIX3 LAZY SUSAN ASSEMBLY

DWG. NO. **09979**

REV
K

UNLESS OTHERWISE
SPECIFIED, DIMENSIONS
ARE IN INCHES.


SCALE 0.500

APPR.

SHEET 5 OF 6

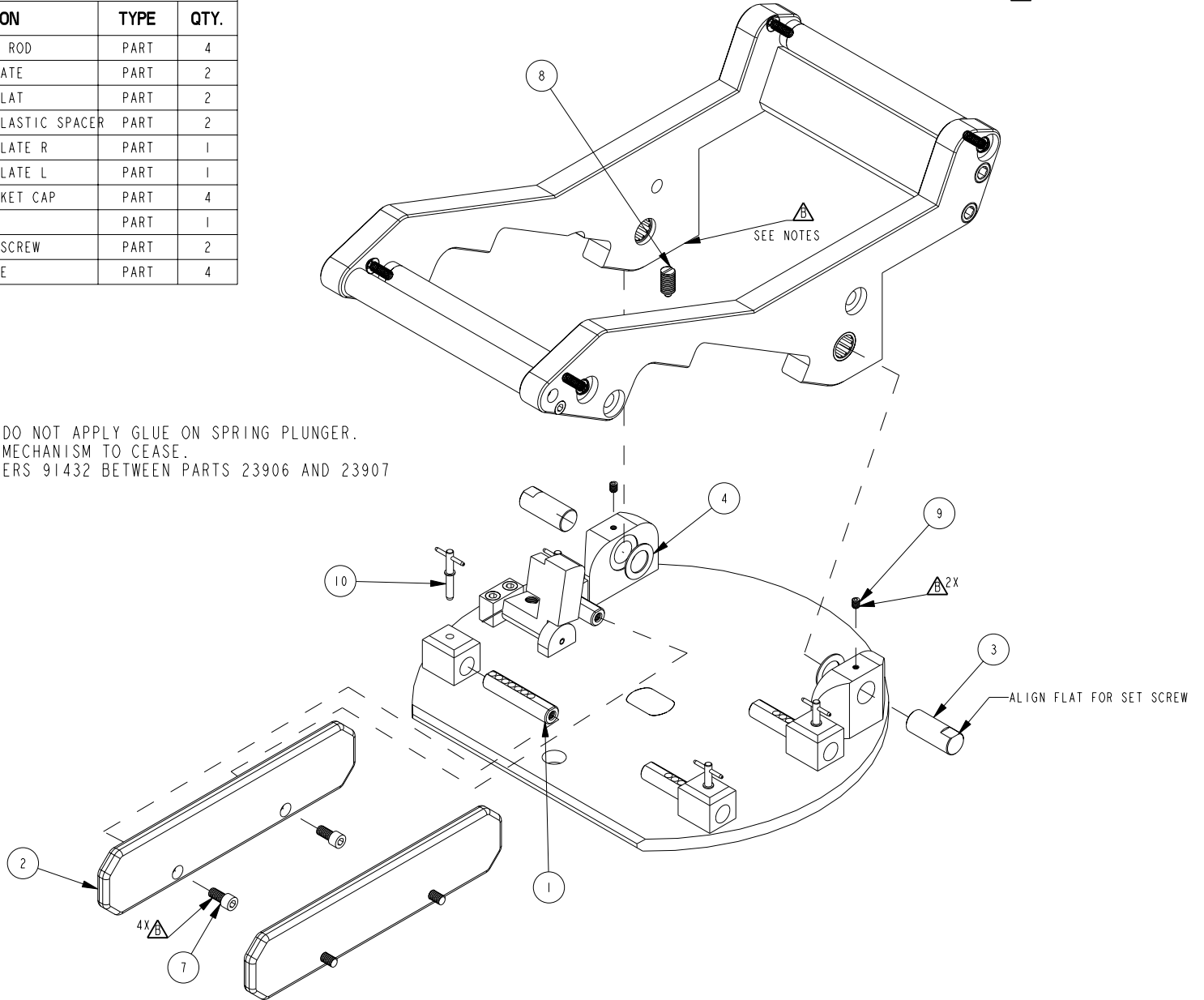
BILL OF MATERIAL (CURRENT LEVEL)

ITEM	PT/ASSY	DESCRIPTION	TYPE	QTY.
1	23906	TIX3 CRADLE SPACER ROD	PART	4
2	23907	TIX3 TIRE GUIDE PLATE	PART	2
3	23918	5/8" DIA DOWEL W FLAT	PART	2
4	23981	.625 ID X 1.0 OD PLASTIC SPACER	PART	2
5	24070	TIX3 STEMME SIDE PLATE R	PART	1
6	24074	TIX3 STEMME SIDE PLATE L	PART	1
7	95017	1/4"-20 X 1/2" SOCKET CAP	PART	4
8	95041	SPRING PLUNGER	PART	1
9	95095	10-24 X 1/4"L SET SCREW	PART	2
10	95496	3/16" DIA. T-HANDLE	PART	4

 BLUE REMOVABLE LOCTITE

NOTES:

1. ADD GLUE TO MATING PART. DO NOT APPLY GLUE ON SPRING PLUNGER. IT WILL CAUSE THE SPRING MECHANISM TO CEASE.
2. ASSEMBLY MAY REQUIRE WASHERS 91432 BETWEEN PARTS 23906 AND 23907



A Touch of Brass
A TOUCH OF BRASS INC

13832 MAGNOLIA AVE.
CHINO, CA 91710-7027
909-464-1000

TIX3 LAZY SUSAN ASSEMBLY

DWG. NO. **09979**

REV
K

UNLESS OTHERWISE SPECIFIED, DIMENSIONS ARE IN INCHES.

SCALE 0.250

APPR.

SHEET 6 OF 6