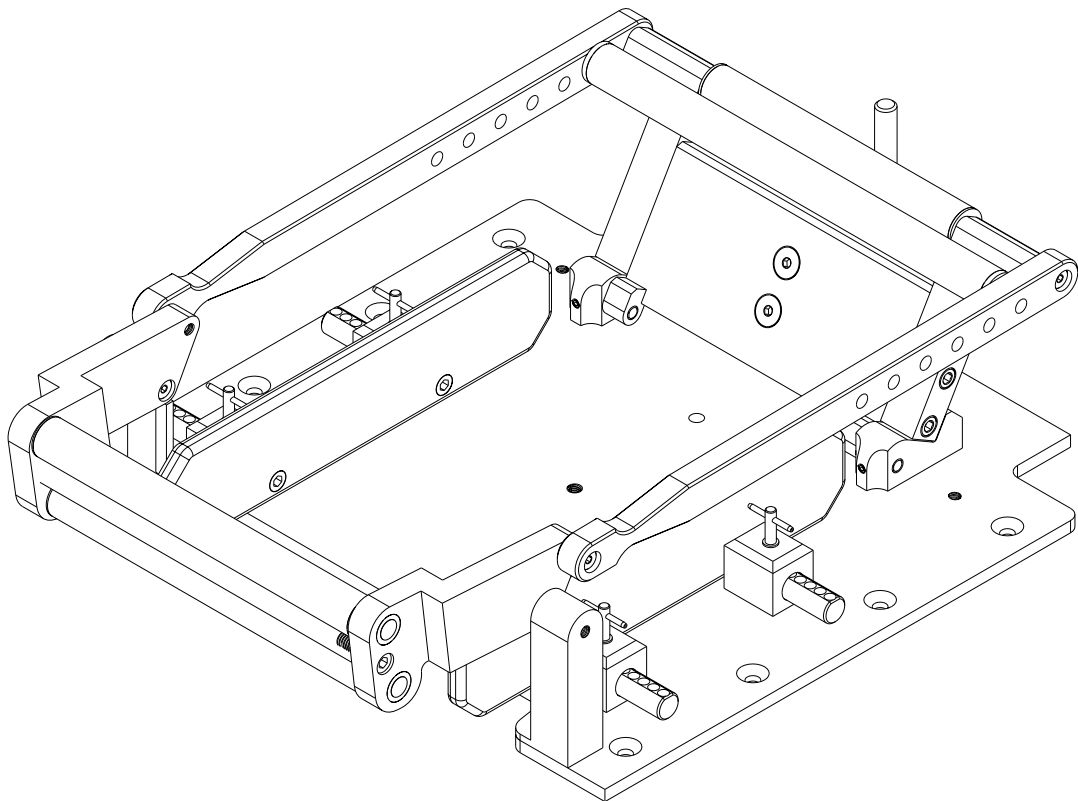


BILL OF MATERIAL (CURRENT LEVEL)

ITEM	PT/ASSY	DESCRIPTION	TYPE	QTY.
1	09563	TIX LATCH ASSEMBLY	ASSEMBLY	1
2	22224	TUG ROLLER	PART	2
3	22225	TUG ROLLER AXLE	PART	4
4	22423	TUG ROLLER SPACER	PART	4
5	23327	TUG REAR ROLLER	PART	1
6	23328	TUG LATCH CATCH	PART	1
7	23329	TIX ROLLER PIN	PART	2
8	23334	TIX RAMP BRACE	PART	1
9	23373	PLASTIC BUSHING	PART	2
10	23730	T.75 CRADLE REAR PIVOT	PART	2
11	23822	T.75 BACK GATE	PART	1
12	23837	T.75 RIGHT FRONT PIVOT	PART	1
13	23838	T.75 LEFT FRONT PIVOT	PART	1
14	23850	T.75 LATCH RISER BLOCK	PART	1
15	23867	1/4" DIA X 1-1/4" L DOWEL PIN	PART	2
16	23870	T-MINI TD AXLE	PART	1
17	23872	TD BUSHING	PART	2
18	23905	TIX3 CRADLE SPACER GUIDE	PART	4
19	23906	TIX3 CRADLE SPACER ROD	PART	4
20	23907	TIX3 TIRE GUIDE PLATE	PART	2
21	24379	FRONT ARM L, T-MINI 2 ROLLERS	PART	1
22	24380	FRONT ARM R, T-MINI 2 ROLLERS	PART	1
23	24381	T-MINI MAIN PLATE, 2 ROLLER	PART	1
24	24502	T-MINI LINK	PART	2
25	24503	T-MINI BACK GATE RISER	PART	2
26	24504	T-MINI ADJUST ROLLER	PART	1
27	92042	1/4" X 1/4" SS SHOULDER BOLT	PART	6
28	92151	10-24 X 5/16" L SS SET SCREW	PART	2
29	92192	10-24 X .750" SOCKET CAP SCREW	PART	2
30	92210	10-24 X 1" FLAT HEAD	PART	8
31	92279	KNOB FOR #8 SCREW (RED)	PART	2
32	92353	#10-24 3/8" HEX NUT 1/8" H	PART	1
33	92423	SERVO MOUNT FOR 95393	PART	1
34	92426	SERVO CAM FOR 95393	PART	1
35	92628	M2 X 0.4 MM, 6 MM L PHIL. SCREW	PART	1
36	95003	1/4"-20 X 3/4" FLAT HEAD	PART	4
37	95006	1/4"-20 X 1" FLAT HEAD	PART	4
38	95017	1/4"-20 X 1/2" SOCKET CAP	PART	4
39	95024	3/8" NEEDLE ROLLER BEARING	PART	4

40	95117	1/4"-20 X 3/4" SOCKET CAP	PART	2
41	95200	1/4"-20 X 1" CAP SCREW	PART	8
42	95292	1/4"-20 X 2" L SOCKET CAP SCREW	PART	2
43	95347	1/4"DIA X 1-1/4"L SHOULDER SS	PART	1
44	95387	8-32 X 3/8" L SOCKET CAP SCREW	PART	2
45	95393	RED MICRO SERVO 1810-MG	PART	1
46	95481	1/4"-20 X 7/8" FLAT SOCKET HEAD	PART	2
47	95496	3/16" DIA. T-HANDLE	PART	4
48	SRV_95036C	SERVO MOUNTING SCREW	PART	2



****CRITICAL NOTE ON SHEET 2. VERIFY PARTS MATCH BEFORE PROCEEDING****

A Touch of Brass
A TOUCH OF BRASS INC
13832 MAGNOLIA AVE.
CHINO, CA 91710-7027
909-464-1000

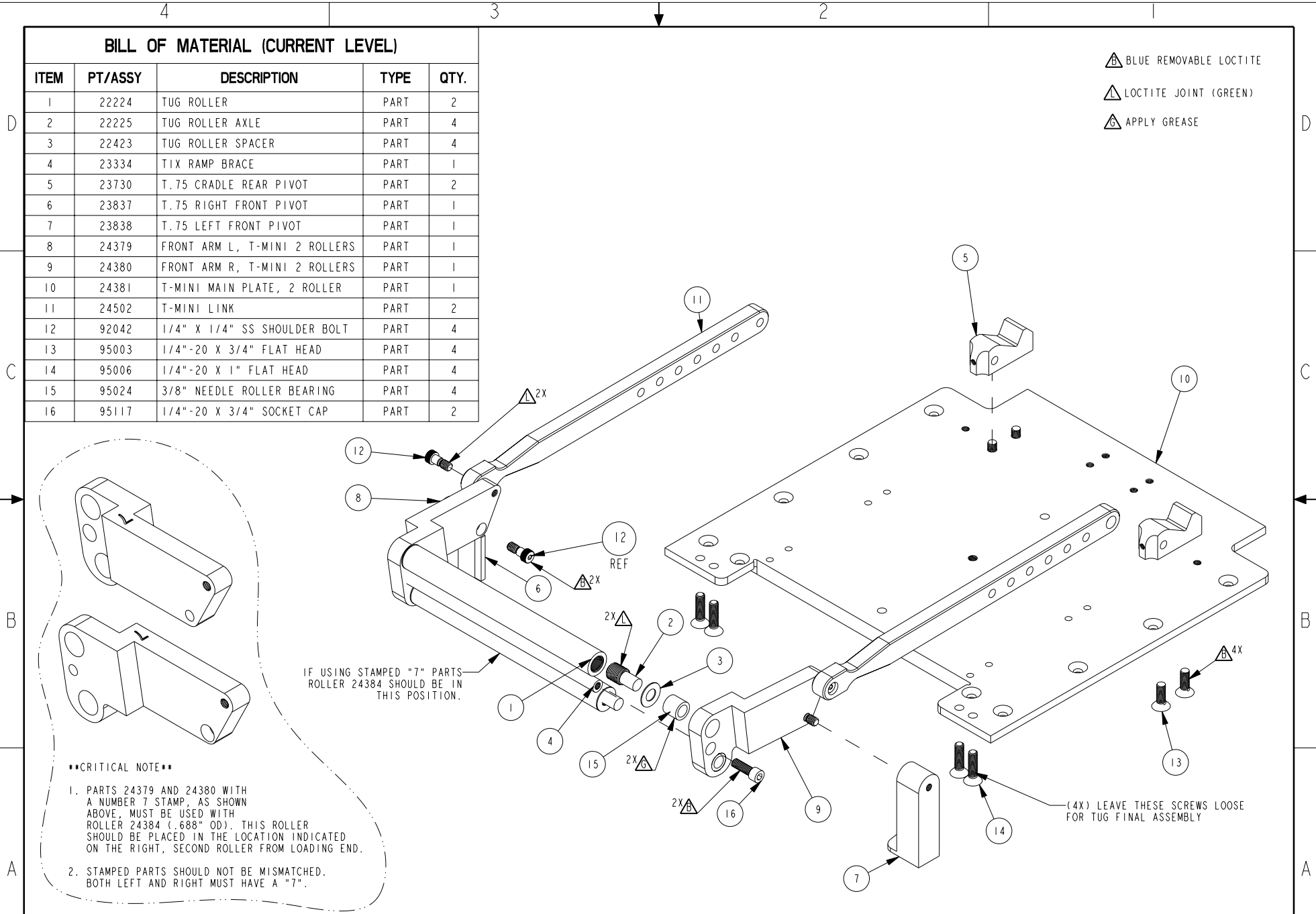
5X5 CRADLE ASSEMBLY

DWG. NO. 09956	REV Q	UNLESS OTHERWISE SPECIFIED, DIMENSIONS ARE IN INCHES.
SCALE 0.313	SHEET 1 OF 4	

BILL OF MATERIAL (CURRENT LEVEL)

ITEM	PT/ASSY	DESCRIPTION	TYPE	QTY.
1	22224	TUG ROLLER	PART	2
2	22225	TUG ROLLER AXLE	PART	4
3	22423	TUG ROLLER SPACER	PART	4
4	23334	TIX RAMP BRACE	PART	1
5	23730	T.75 CRADLE REAR PIVOT	PART	2
6	23837	T.75 RIGHT FRONT PIVOT	PART	1
7	23838	T.75 LEFT FRONT PIVOT	PART	1
8	24379	FRONT ARM L, T-MINI 2 ROLLERS	PART	1
9	24380	FRONT ARM R, T-MINI 2 ROLLERS	PART	1
10	24381	T-MINI MAIN PLATE, 2 ROLLER	PART	1
11	24502	T-MINI LINK	PART	2
12	92042	1/4" X 1/4" SS SHOULDER BOLT	PART	4
13	95003	1/4"-20 X 3/4" FLAT HEAD	PART	4
14	95006	1/4"-20 X 1" FLAT HEAD	PART	4
15	95024	3/8" NEEDLE ROLLER BEARING	PART	4
16	95117	1/4"-20 X 3/4" SOCKET CAP	PART	2

- BLUE REMOVABLE LOCTITE
- LOCTITE JOINT (GREEN)
- APPLY GREASE



****CRITICAL NOTE****

1. PARTS 24379 AND 24380 WITH A NUMBER 7 STAMP, AS SHOWN ABOVE, MUST BE USED WITH ROLLER 24384 (.688" OD). THIS ROLLER SHOULD BE PLACED IN THE LOCATION INDICATED ON THE RIGHT, SECOND ROLLER FROM LOADING END.
2. STAMPED PARTS SHOULD NOT BE MISMATCHED. BOTH LEFT AND RIGHT MUST HAVE A "7".

A Touch of Brass
A TOUCH OF BRASS INC

13832 MAGNOLIA AVE.
CHINO, CA 91710-7027
909-464-1000

5X5 CRADLE ASSEMBLY

DWG. NO. **09956**

REV **Q**

UNLESS OTHERWISE SPECIFIED, DIMENSIONS ARE IN INCHES.



SCALE **0.275**

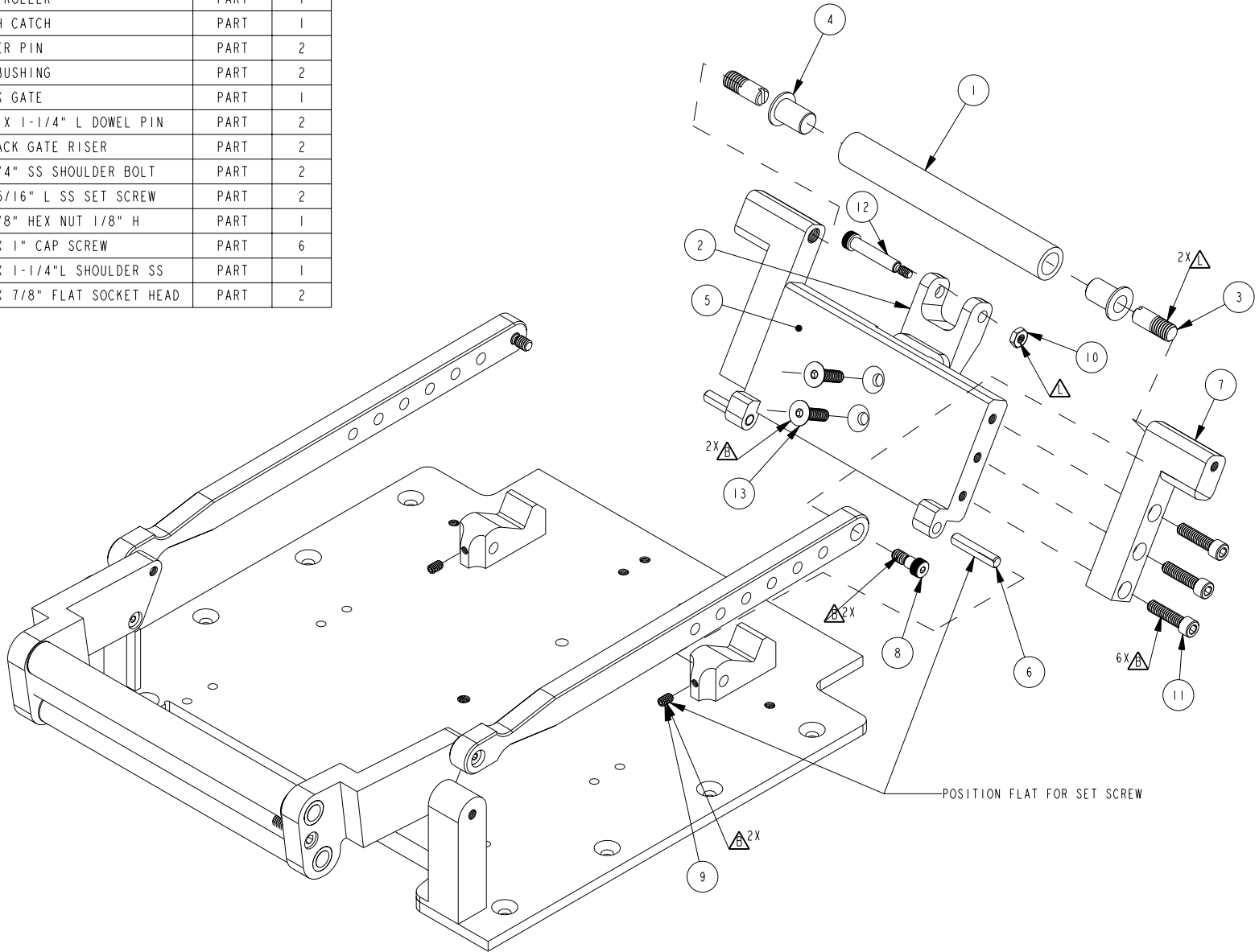
APPR.

SHEET **2** OF **4**

BILL OF MATERIAL (CURRENT LEVEL)

ITEM	PT/ASSY	DESCRIPTION	TYPE	QTY.
1	23327	TUG REAR ROLLER	PART	1
2	23328	TUG LATCH CATCH	PART	1
3	23329	TIX ROLLER PIN	PART	2
4	23373	PLASTIC BUSHING	PART	2
5	23822	T.75 BACK GATE	PART	1
6	23867	1/4" DIA X 1-1/4" L DOWEL PIN	PART	2
7	24503	T-MINI BACK GATE RISER	PART	2
8	92042	1/4" X 1/4" SS SHOULDER BOLT	PART	2
9	92151	10-24 X 5/16" L SS SET SCREW	PART	2
10	92353	#10-24 3/8" HEX NUT 1/8" H	PART	1
11	95200	1/4"-20 X 1" CAP SCREW	PART	6
12	95347	1/4"DIA X 1-1/4"L SHOULDER SS	PART	1
13	95481	1/4"-20 X 7/8" FLAT SOCKET HEAD	PART	2

 BLUE REMOVABLE LOCTITE
 LOCTITE JOINT (GREEN)



A Touch of Brass
A TOUCH OF BRASS INC

13832 MAGNOLIA AVE.
CHINO, CA 91710-7027
909-464-1000

5X5 CRADLE ASSEMBLY

DWG. NO. **09956**

REV **Q**

UNLESS OTHERWISE SPECIFIED, DIMENSIONS ARE IN INCHES.

SCALE 0.313

APPR.

SHEET 3 OF 4

▲ LOCTITE JOINT (GREEN)

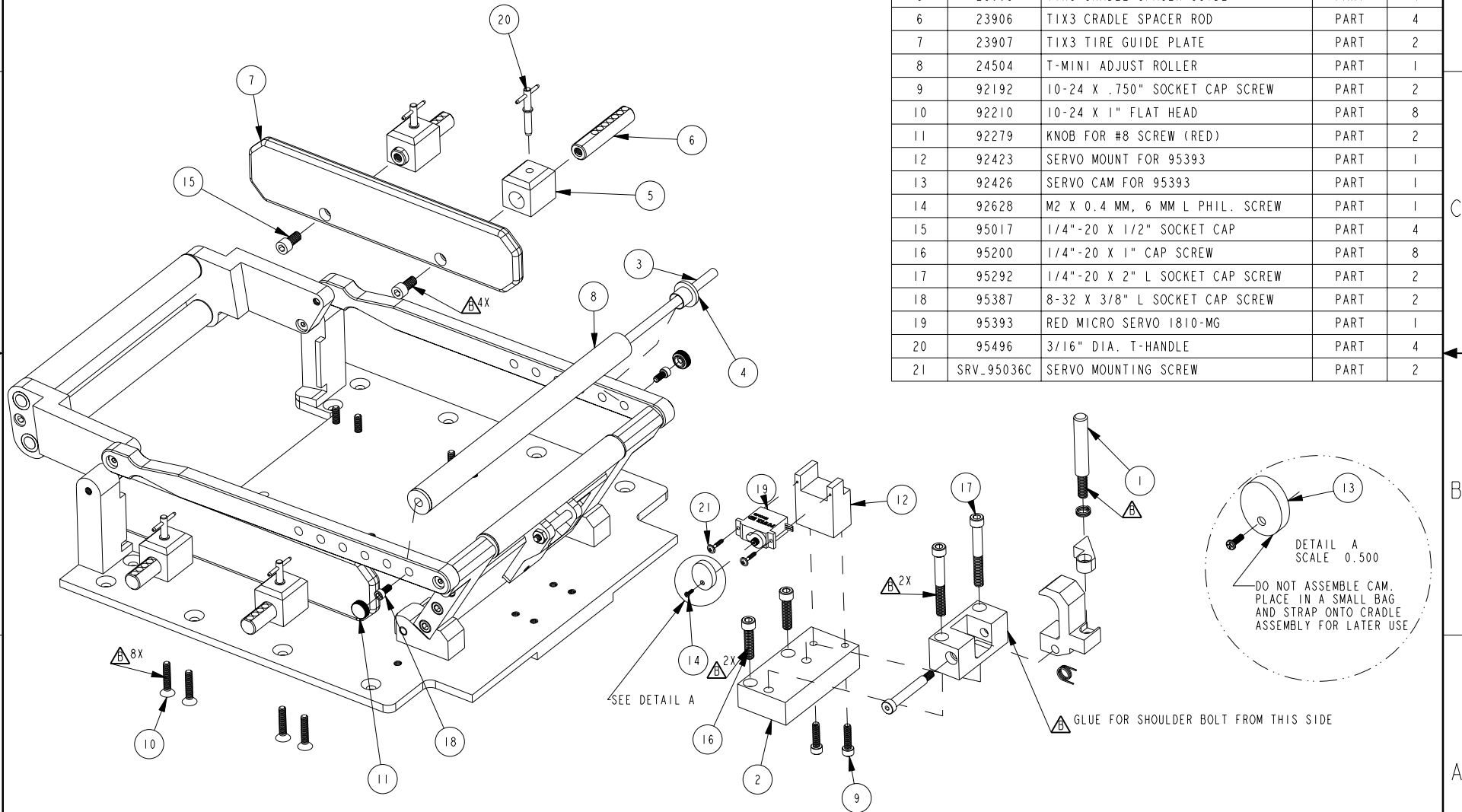
▲ BLUE REMOVABLE LOCTITE

NOTE:

ITEM SRV_95036 SERVO SCREWS ARE IN SERVO PARTS BAG

BILL OF MATERIAL (CURRENT LEVEL)

ITEM	PT/ASSY	DESCRIPTION	TYPE	QTY.
1	09563	TIX LATCH ASSEMBLY	ASSEMBLY	1
2	23850	T.75 LATCH RISER BLOCK	PART	1
3	23870	T-MINI TD AXLE	PART	1
4	23872	TD BUSHING	PART	2
5	23905	TIX3 CRADLE SPACER GUIDE	PART	4
6	23906	TIX3 CRADLE SPACER ROD	PART	4
7	23907	TIX3 TIRE GUIDE PLATE	PART	2
8	24504	T-MINI ADJUST ROLLER	PART	1
9	92192	10-24 X .750" SOCKET CAP SCREW	PART	2
10	92210	10-24 X 1" FLAT HEAD	PART	8
11	92279	KNOB FOR #8 SCREW (RED)	PART	2
12	92423	SERVO MOUNT FOR 95393	PART	1
13	92426	SERVO CAM FOR 95393	PART	1
14	92628	M2 X 0.4 MM, 6 MM L PHIL. SCREW	PART	1
15	95017	1/4"-20 X 1/2" SOCKET CAP	PART	4
16	95200	1/4"-20 X 1" CAP SCREW	PART	8
17	95292	1/4"-20 X 2" L SOCKET CAP SCREW	PART	2
18	95387	8-32 X 3/8" L SOCKET CAP SCREW	PART	2
19	95393	RED MICRO SERVO 1810-MG	PART	1
20	95496	3/16" DIA. T-HANDLE	PART	4
21	SRV_95036C	SERVO MOUNTING SCREW	PART	2



A Touch of Brass
A TOUCH OF BRASS INC

13832 MAGNOLIA AVE.
CHINO, CA 91710-7027
909-464-1000

5X5 CRADLE ASSEMBLY

DWG. NO. 09956

REV Q

UNLESS OTHERWISE SPECIFIED, DIMENSIONS ARE IN INCHES.

SCALE 0.250

APPR.

SHEET 4 OF 4