



NOTES: USING THESE LONGER LINKS LIMITS THE ROATION OF THE TURN TABLE TO 180°

STEPS FOR REPLACING THE STOCK LINKS

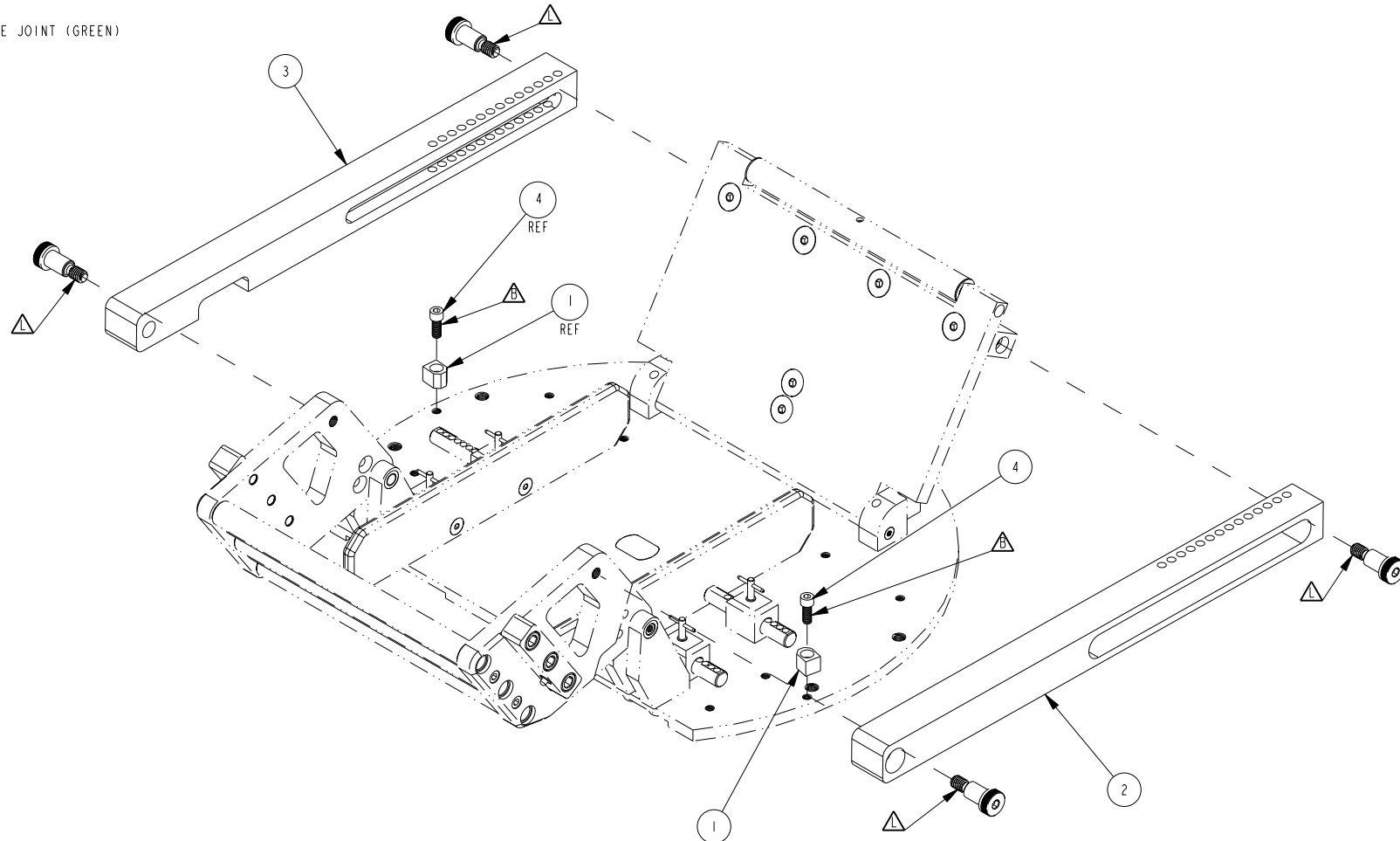
1. REMOVE THE FOUR EXISTING SHOULDER BOLTS BY HEATING EACH ONE WITH A TORCH FOR 10-20 SECONDS. EACH SHOULDER BOLT HAS PERMANENT THREAD LOCKER (LOCTITE 680)
2. INSTALL THE NEW LINKS, NOTE THE ORIENTATION OF THE LINKS FROM THE IMAGE BELOW.
3. APPLY PERMANENT THREAD LOCKER TO EACH SHOULDER BOLT BEFORE REINSTALLING THEM. THE GLUE HARDENS IN 10 MINUTES AND CURES IN 24 HOURS.
4. INSTALL THE TWO SCREWS FOR THE STOP BLOCKS, NOTE THE ORIENTATION OF THE STOP BLOCKS. APPLY NON-PERMANENT THREAD LOCKER TO EACH SCREW (LOCTITE 242). THE GLUE HARDENS IN 10 MINUTES AND CURES IN 24 HOURS.

 BLUE REMOVABLE LOCTITE

 LOCTITE JOINT (GREEN)

**BILL OF MATERIAL (CURRENT LEVEL)**

ITEM	PT/ASSY	DESCRIPTION	TYPE	QTY.
1	23688	LS STOP BLOCK	PART	2
2	24359	T2V2 LAZY SUSAN LINK (R)	PART	1
3	24360	T2D2 LAZY SUSAN LINK (L)	PART	1
4	95016	1/4"-20 X 5/8" SOCKET CAP	PART	2



**ACAIR  
Technology**

13832 MAGNOLIA AVE.  
CHINO, CA 91710-7027  
855-884-7222

CONVERSION KIT FOR 23.5" MAX. DIA. TIRE

ASSY. NO. 09900

A

SCALE 0.210

REF. -

SHEET 1 OF 1