

**BILL OF MATERIAL (CURRENT LEVEL)**

ITEM	PT/ASSY	DESCRIPTION	TYPE	QTY.
1	24111	32 TOOTH X .540 WIDTH	PART	5
2	24305	BEARING STAND	PART	2
3	24306	GEAR TRAIN 2 COVER LEFT	PART	1
4	24308	.876 X .281 BEARING GEAR	PART	4
5	24310	HELI CRADLE IDLE ROLLER	PART	3
6	24313	CRADLE GEAR SPACER	PART	5
7	24314	CRADLE ACETAL GUIDE	PART	2
8	24315	GEAR TRAIN 2 RIGHT COVER	PART	1
9	24316	GEAR TRAIN 2 COVER LEFT	PART	1
10	24420	ACETAL WASHER .500OD X .377ID	PART	8
11	24548	12DP, 12T, 20PA, 1.00PD GEAR	PART	1
12	24609	HELI CRADLE IDLE ROLLER	PART	1
13	24610	HELI CRADLE IDLE ROLLER	PART	1
14	24619	CRADLE CASE DRIVE BOTTOM	PART	1
15	24620	CRADLE CASE DRIVE TOP	PART	1
16	24621	CRADLE CASE IDLE BOTTOM	PART	1
17	24622	CRADLE CASE IDLE TOP	PART	1
18	24623	CRADLE RETAINER	PART	2
19	24624	CRADLE SPACER	PART	1
20	92726	5/16"-18 X 1" CAP SCREW	PART	16
21	95016	1/4"-20 X 5/8" SOCKET CAP	PART	4
22	95025	1/2" BALL BEARING	PART	16
23	95269	10-24 X 1" L SOCKET CAP	PART	2
24	95363	1/4" X .500" DOWEL PIN	PART	4
25	95518	10-24 X 1-1/4" SOCKET CAP	PART	6
26	95523	RETAINER RING, .500"OD, .461"ID	PART	2
27	95560	BALL BEARING 1.75"OD, .500"ID	PART	6
28	95561	1/8"SQ. X 1.000"L KEY STOCK	PART	6
29	98009	.875"OD, .375"ID, SHIELDED BAL	PART	8

*A Touch of Brass*  
A TOUCH OF BRASS INC  
13832 MAGNOLIA AVE.  
CHINO, CA 91710-7027  
909-464-1000

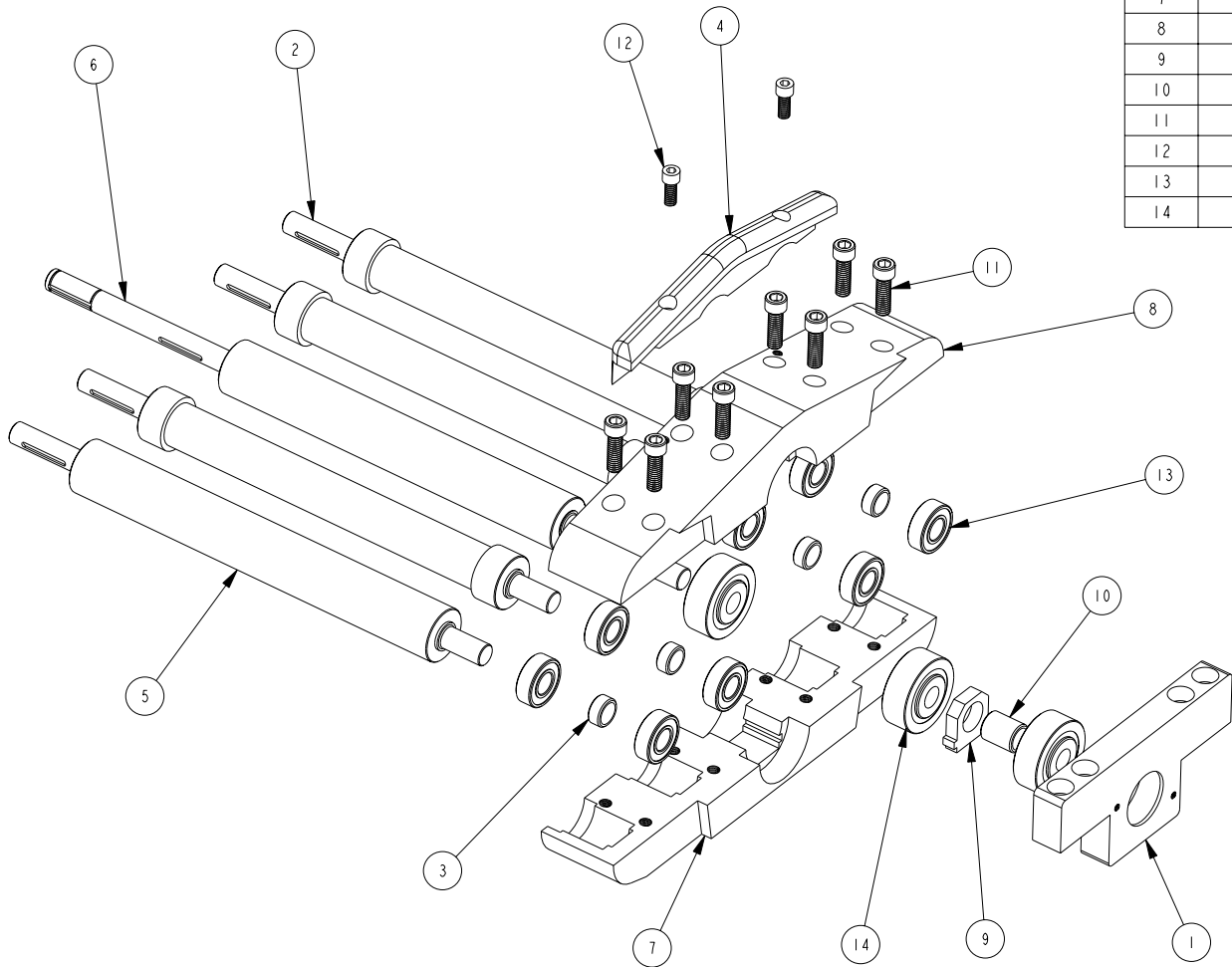
**HELICOPTER TUG CRADLE (R)**

DWG. NO. <b>09614</b>	REV <b>1</b>	UNLESS OTHERWISE SPECIFIED, DIMENSIONS ARE IN INCHES.
SCALE <b>0.350</b>	SHEET <b>1</b> OF <b>3</b>	

▲ BLUE REMOVABLE LOCTITE

**BILL OF MATERIAL (CURRENT LEVEL)**

ITEM	PT/ASSY	DESCRIPTION	TYPE	QTY.
1	24305	BEARING STAND	PART	1
2	24310	HELI CRADLE IDLE ROLLER	PART	3
3	24313	CRADLE GEAR SPACER	PART	4
4	24314	CRADLE ACETAL GUIDE	PART	1
5	24609	HELI CRADLE IDLE ROLLER	PART	1
6	24610	HELI CRADLE IDLE ROLLER	PART	1
7	24621	CRADLE CASE IDLE BOTTOM	PART	1
8	24622	CRADLE CASE IDLE TOP	PART	1
9	24623	CRADLE RETAINER	PART	1
10	24624	CRADLE SPACER	PART	1
11	92726	5/16"-18 X 1" CAP SCREW	PART	8
12	95016	1/4"-20 X 5/8" SOCKET CAP	PART	2
13	95025	1/2" BALL BEARING	PART	8
14	95560	BALL BEARING 1.75"OD, .500" ID	PART	3



*A Touch of Brass*  
A TOUCH OF BRASS INC

13832 MAGNOLIA AVE.  
CHINO, CA 91710-7027  
909-464-1000

**HELICOPTER TUG CRADLE (R)**

DWG. NO. **09614**

REV  
1

UNLESS OTHERWISE SPECIFIED, DIMENSIONS ARE IN INCHES.

SCALE 0.245

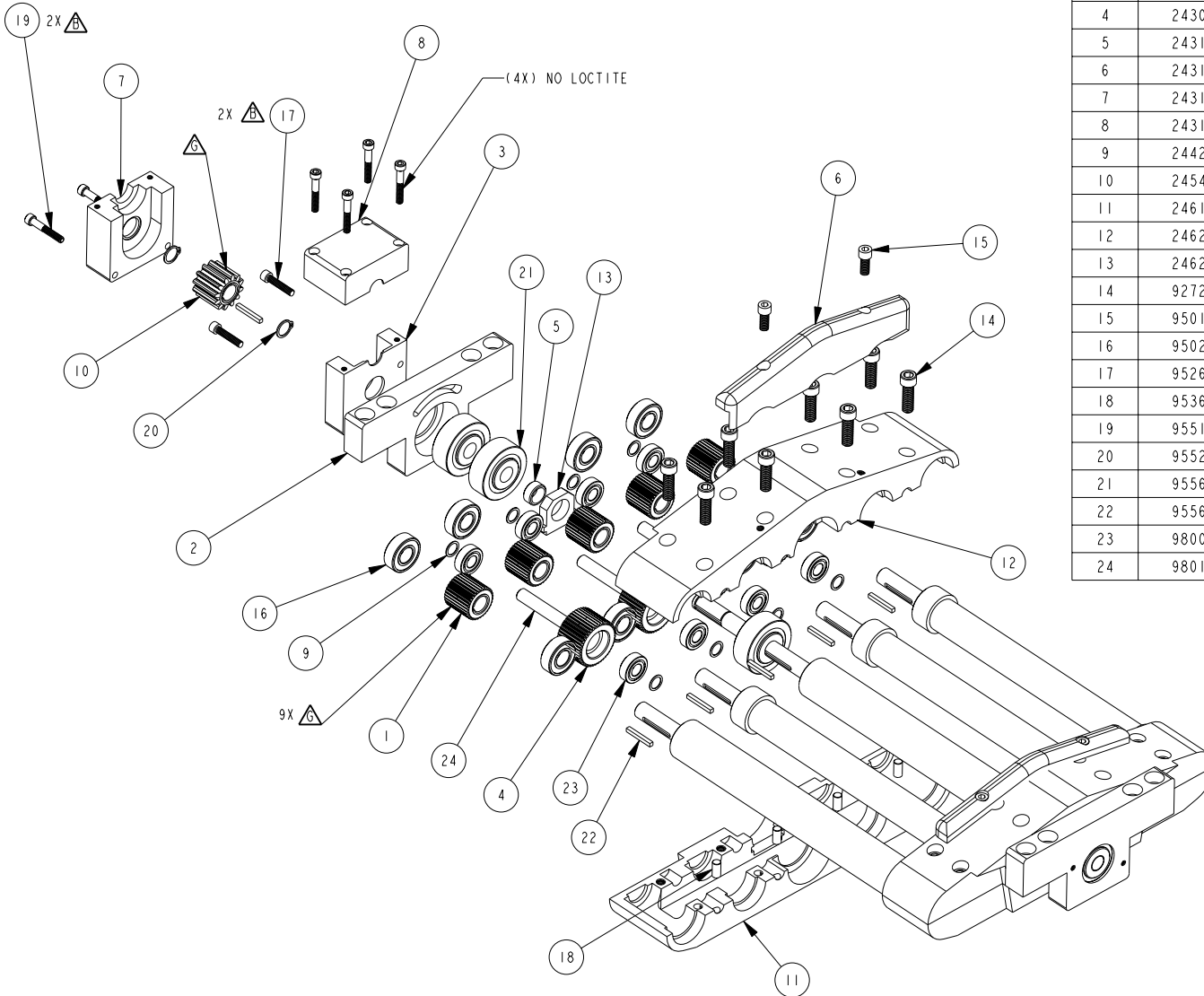
APPR.

SHEET 2 OF 3

 BLUE REMOVABLE LOCTITE  
 APPLY GREASE

**BILL OF MATERIAL (CURRENT LEVEL)**

ITEM	PT/ASSY	DESCRIPTION	TYPE	QTY.
1	24111	32 TOOTH X .540 WIDTH	PART	5
2	24305	BEARING STAND	PART	1
3	24306	GEAR TRAIN 2 COVER LEFT	PART	1
4	24308	.876 X .281 BEARING GEAR	PART	4
5	24313	CRADLE GEAR SPACER	PART	1
6	24314	CRADLE ACETAL GUIDE	PART	1
7	24315	GEAR TRAIN 2 RIGHT COVER	PART	1
8	24316	GEAR TRAIN 2 COVER LEFT	PART	1
9	24420	ACETAL WASHER .500OD X .377ID	PART	8
10	24548	12DP, 12T, 20PA, 1.00PD GEAR	PART	1
11	24619	CRADLE CASE DRIVE BOTTOM	PART	1
12	24620	CRADLE CASE DRIVE TOP	PART	1
13	24623	CRADLE RETAINER	PART	2
14	92726	5/16"-18 X 1" CAP SCREW	PART	8
15	95016	1/4"-20 X 5/8" SOCKET CAP	PART	2
16	95025	1/2" BALL BEARING	PART	8
17	95269	10-24 X 1" L SOCKET CAP	PART	2
18	95363	1/4" X .500" DOWEL PIN	PART	4
19	95518	10-24 X 1-1/4" SOCKET CAP	PART	6
20	95523	RETAINER RING, .500"OD, .461"ID	PART	2
21	95560	BALL BEARING 1.75"OD, .500"ID	PART	3
22	95561	1/8"SQ. X 1.000"L KEY STOCK	PART	6
23	98009	.875"OD, .375"ID, SHIELDED BAL	PART	8
24	98010	3/8" DIA. X 2.000"L DOWEL PIN	PART	4



*A Touch of Brass*  
 A TOUCH OF BRASS INC

13832 MAGNOLIA AVE.  
 CHINO, CA 91710-7027  
 909-464-1000

**HELICOPTER TUG CRADLE (R)**

DWG. NO. **09614**

REV **1**

UNLESS OTHERWISE SPECIFIED, DIMENSIONS ARE IN INCHES.

SCALE **0.200**

APPR.

SHEET **3** OF **3**