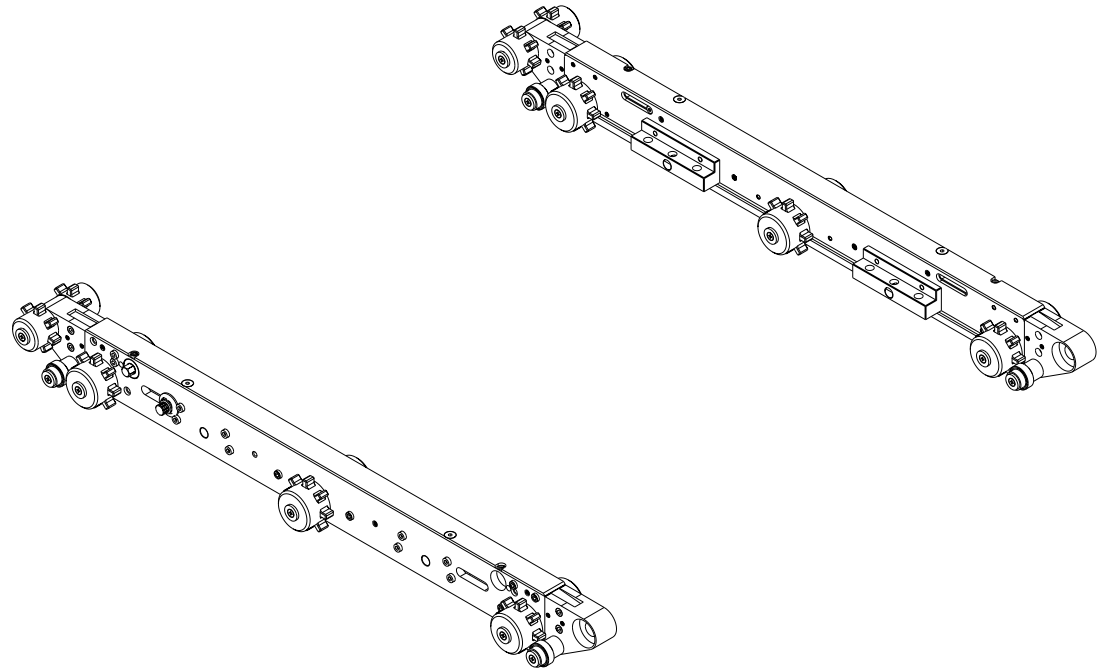


BILL OF MATERIAL (CURRENT LEVEL)

ITEM	PT/ASSY	DESCRIPTION	TYPE	QTY.
1	22422	TUG SHAFT RETAINER	PART	24
2	22646	T1.5 SPROCKET	PART	12
3	22836	T1.7 1/2" 4" AXLE	PART	10
4	22915	T1.5 TRACK ROLLER	PART	4
5	22916	T1.5 TRACK ROLLER SHAFT	PART	4
6	23490	INNER ROLLER SPACER	PART	8
7	23491	OUTTER ROLLER SPACER	PART	8
8	23559	7 TOOTH T2 DRIVE SPROCKET	PART	4
9	23631	V2 T1.5 RAIL FRONT PLATE	PART	2
10	23632	V2T1.5 RAIL REAR PLATE	PART	2
11	23633	V2 T1.5 RAIL RACK	PART	2
12	23634	V2 T1.5 RAIL PINION	PART	2
13	23636	T1.5 RAIL SIDE BLOCK	PART	4
14	23640	V2 T1.5 BUSHING	PART	2
15	23862	RAIL LOCKING BLOCK INSERT	PART	2
16	23863	RAIL LOCKING BLOCK GUIDE	PART	2
17	23980	T1.7 OUTSIDE PLATE	PART	2
18	23982	V2T1.5 RAIL INNER PLATE	PART	2
19	23983	T1.7 RAIL DRIVE END	PART	4
20	23988	V2 T1.5 RAIL TOP PLATE	PART	2
21	24090	T1.7 CENTER SPROCKET RAIL PLATE	PART	2
22	24484	T1.7 5/8" 4" AXLE	PART	2
23	91179	.510 ID X .605 OD X .04 TH WASHER	PART	4
24	91225	7/16" SS FLAT WASHER	PART	2
25	91226	7/16" SS LOCK WASHER	PART	2
26	91455	1/4"-20 X 1-1/8" L CAP SCREW	PART	10
27	91645	SUPPORT, HANDLE	PART	4
28	92012	RAIL SPACER OD .54" ID .285"	PART	16
29	92201	1/8" X 5/8" ROLL PIN	PART	2
30	92207	7/16"-14 X 1" 12 PT BOLT	PART	2
31	92328	FLAT HEAD SCREW, 1/4"-20 X 3/8"	PART	4
32	92617	10-24X1/4"L SOCKET SCREW	PART	2
33	92619	10-32X1/4"L 1/4"L SHOULDER SCREW	PART	2
34	95016	1/4"-20 X 5/8" SOCKET CAP	PART	12
35	95025	1/2" BALL BEARING	PART	28
36	95026	1/8" SQ. X .400"L KEY STOCK	PART	16
37	95092	10-32 X 3/8"L FLAT HEAD	PART	24
38	95124	1/4"-20 X 1.5" L SOCKET CAP	PART	16
39	95287	0.24" X 0.5" COMP SPRING	PART	2
40	95308	BALL BEARING 1-3/8" OD 5/8" SHAFT	ASSEMBLY	4
41	96294	TUG SPROCKET SPACER	PART	8



A Touch of Brass
A TOUCH OF BRASS INC
95852 MAGNOLIA AVE.
CHINO, CA 91710-7027
909-464-1000

T1.7 RAIL ASSEMBLY

DWG. NO. **09592**

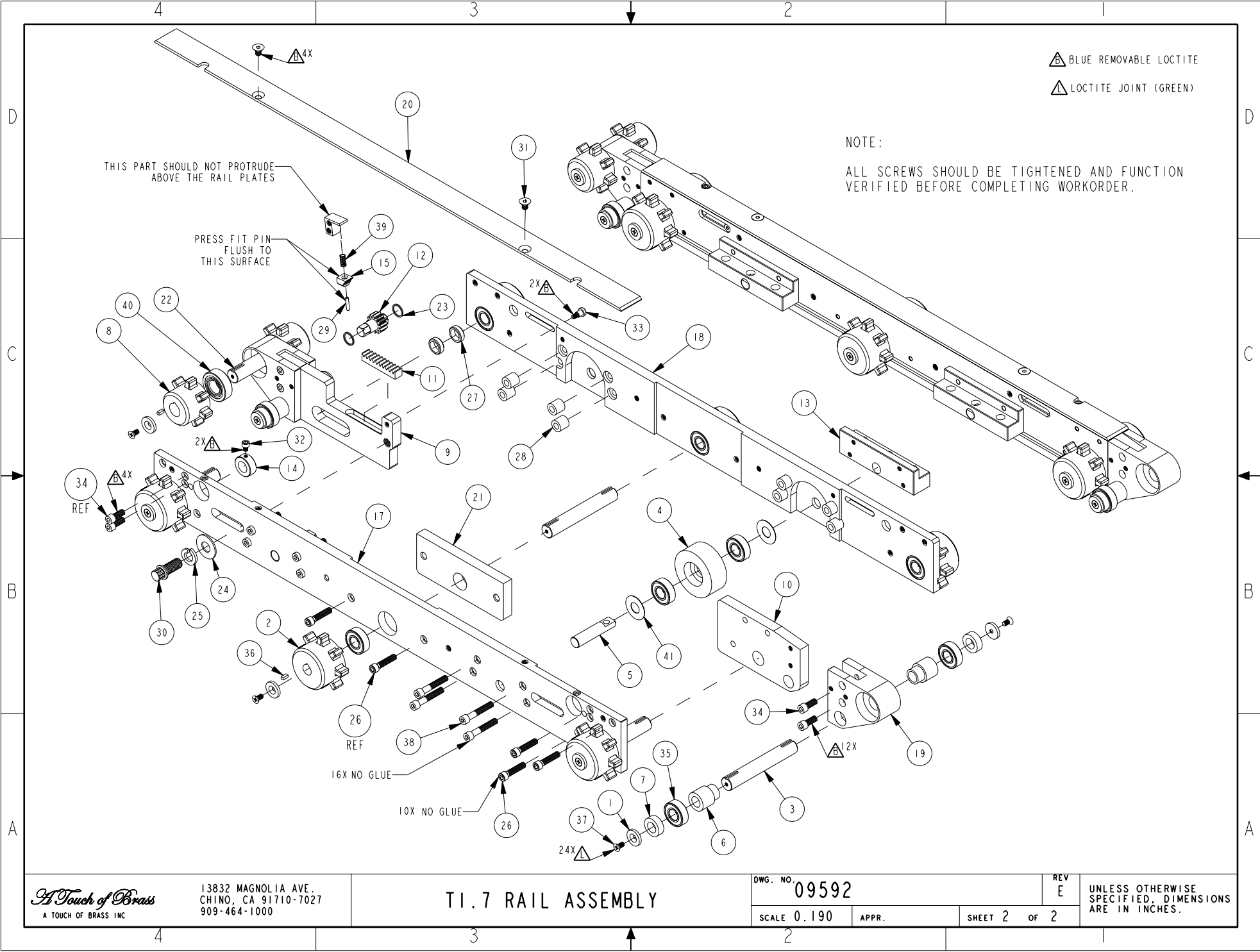
REV **E**

UNLESS OTHERWISE SPECIFIED, DIMENSIONS ARE IN INCHES.

SCALE **0.120**

APPR.

SHEET **1** OF **2**



BLUE REMOVABLE LOCTITE
 LOCTITE JOINT (GREEN)

NOTE:
 ALL SCREWS SHOULD BE TIGHTENED AND FUNCTION
 VERIFIED BEFORE COMPLETING WORKORDER.

A Touch of Brass
 A TOUCH OF BRASS INC
 13832 MAGNOLIA AVE.
 CHINO, CA 91710-7027
 909-464-1000

TI.7 RAIL ASSEMBLY

DWG. NO. 09592		REV E	UNLESS OTHERWISE SPECIFIED, DIMENSIONS ARE IN INCHES.
SCALE 0.190	APPR.	SHEET 2 OF 2	