

NOTES: 1. IMPORTANT: WRAP MOTOR END OF THE ASSEMBLY WITH PLASTIC BAG AND SECURE WITH MASKING TAPE BEFORE COMPLETING WORKORDER. STRONG MAGNETS IN MOTOR ATTRACT DEBRIS.

2. GREASE SPECIFICATIONS: MOBIL XHP 222 SPECIAL

3. APPLY A GENEROUS AMOUNT OF GREASE ON ALL GEARS.

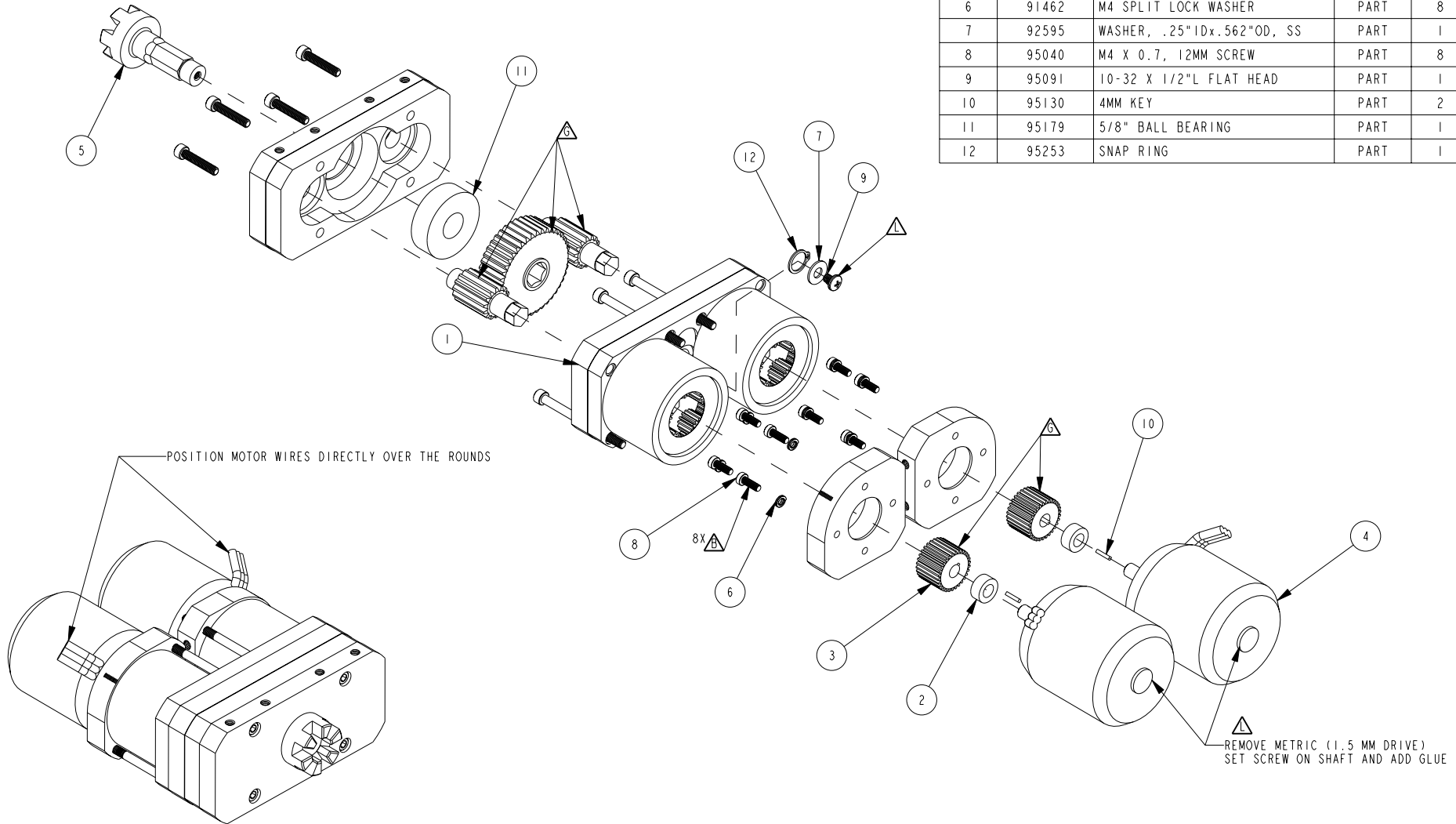
△ LOCTITE JOINT (GREEN)

△ BLUE REMOVABLE LOCTITE

△ APPLY GREASE

BILL OF MATERIAL (CURRENT LEVEL)

ITEM	PT/ASSY	DESCRIPTION	TYPE	QTY.
1	09540	T2 27:1 GEARBOX	ASSEMBLY	1
2	22375	PINION SPACER	PART	2
3	22769	3:1 PINION GEAR	PART	2
4	23029	MOTOR 295KV LONG	PART	2
5	24517	T2V3 INPUT SHAFT	PART	1
6	91462	M4 SPLIT LOCK WASHER	PART	8
7	92595	WASHER, .25"IDx.562"OD, SS	PART	1
8	95040	M4 X 0.7, 12MM SCREW	PART	8
9	95091	10-32 X 1/2"L FLAT HEAD	PART	1
10	95130	4MM KEY	PART	2
11	95179	5/8" BALL BEARING	PART	1
12	95253	SNAP RING	PART	1



ACAIR
Technology

13832 MAGNOLIA AVE.
CHINO, CA 91710-7027
855-884-7222

T2V3 GEARBOX-MOTOR ASSEMBLY

ASSY. NO. 02624

A

SCALE 0.300

REF. -

SHEET 1 OF 1