

Important Information

When using electrical appliances, in order to reduce the risk of fire, electric shock, and/or injury to persons, basic safety precautions should always be followed.

For your safety...

Read all instructions carefully, even if you are familiar with the appliance.

Do not use this appliance if it appears to be damaged.

Do not look directly into the light source or point it into the eyes of others. This can lead to retinal damage.

This appliance is not watertight and is unsuitable for use in damp environments.

This is not a toy. Close attention is necessary when used near children.

Do not immerse the appliance in water or any other liquid.

Do not allow children to play with the packaging materials.

CAUTION!

1. Position the batteries in the correct position and do not install batteries of different types, charge levels or capacity together.

2. Keep batteries away from children! Dispose of batteries correctly.

3. DO NOT dispose of in general waste or fire.



xtralite

Unit 3a Eden Business Park
Dunns Close
Nuneaton
Warwickshire
CV11 4NE

t: 02476 586 845
e: info@xtra-lite.com

xtralite is a trading name of Trinity Xtras Ltd a Company registered in England No 4325172

One Year Limited Warranty
Made in China
For further product information visit
www.xtra-lite.com



xtralite

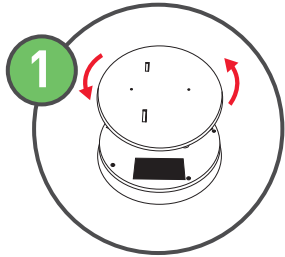
omni Large LED Tap Light



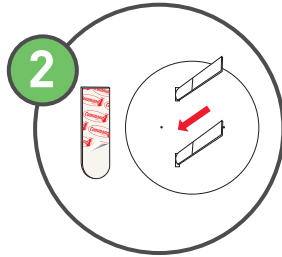
Instruction Manual
Model: XL20728

Please read these instructions carefully before connecting or using the appliance. Keep for future reference.

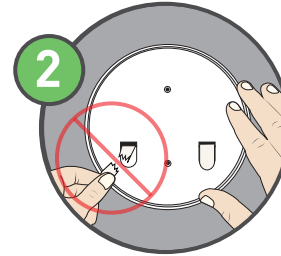
EASY INSTALLATION:



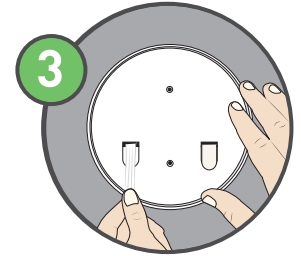
Remove the cover by rotating counter-clockwise. Ensure surface is clean from dust and grease (do not use household cleaners).



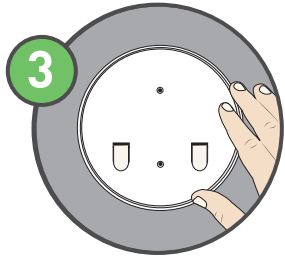
Remove the red liner and insert the tabs into the slots. Press the strips onto the back of the cover.



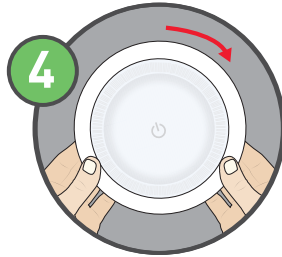
Never pull the strip away from the surface, always pull along the surface.



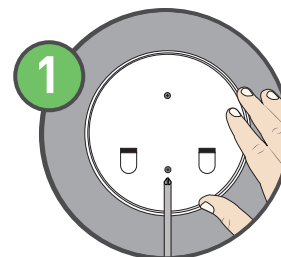
Stretch the strip slowly and straight against the surface not away from it to release.



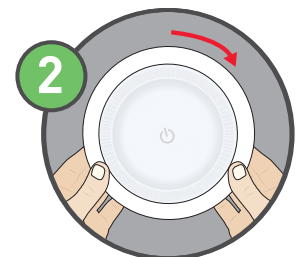
Remove the black liner of the adhesive strips and then press and hold the base onto the surface for 30 seconds.



To attach the light, align the notches and turn the light clockwise.



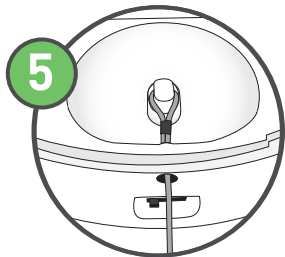
Mark the mounting holes in the cover and drive the screws into the mounting surface.



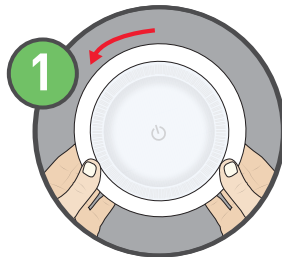
To attach the light, align the notches and turn the light clockwise.

SCREW FIXING:

EASY REMOVAL:



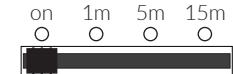
Tap to turn the light on. Or use the pull cord provided. Remove the cover and insert the cord through the hole and into the catch.



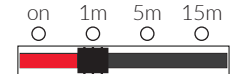
Turn counter-clockwise to release the light from the cover.

AUTO-TIMER:

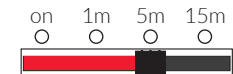
Dimensions: 178mm x 46mm
 Weight: 264g
 LED quantity: 6
 Lamp wattage: 1.07W
 Lamp CCT: 4000K
 Lumens: 80
 Lamp life: 30000hrs
 Battery type: (3) C batteries
 Power Switch: Auto on/off timer switch - On/1min/5min/15min
 Pull cord provided
 Indoor use only



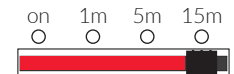
Light will turn ON/OFF when it is pressed manually.



Light will automatically turn OFF after 1 minute.



Light will automatically turn OFF after 5 minutes.



Light will automatically turn OFF after 15 minutes.