

## Important Information

When using electrical appliances, in order to reduce the risk of fire, electric shock, and/or injury to persons, basic safety precautions should always be followed.

## For your safety...

Read all instructions carefully, even if you are familiar with the appliance.

Do not use this appliance if it appears to be damaged.

Do not look directly into the light source or point it into the eyes of others. This can lead to retinal damage.

This appliance is not watertight and is unsuitable for use in damp environments.

This is not a toy. Close attention is necessary when used near children.

Do not immerse the appliance in water or any other liquid.

Do not allow children to play with the packaging materials.

## CAUTION!

1. Position the batteries in the correct position and do not install batteries of different types, charge levels or capacity together.

2. Keep batteries away from children! Dispose of batteries correctly.

3. DO NOT dispose of in general waste or fire.



xtralite

Unit 3a Eden Business Park  
Dunns Close  
Nuneaton  
Warwickshire  
CV11 4NE

t: 02476 586 845  
e: info@xtra-lite.com

xtralite is a trading name of Trinity Xtras Ltd a Company registered in England No 4325172

One Year Limited Warranty  
Made in China  
For further product information visit  
[www.xtra-lite.com](http://www.xtra-lite.com)



xtralite

omni

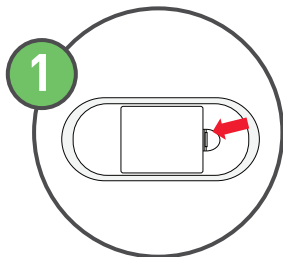
6 LED Motion Activated Light



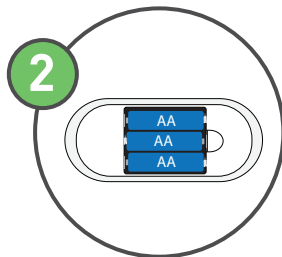
Instruction Manual  
Model: XL20720

Please read these instructions carefully before connecting or using the appliance. Keep for future reference.

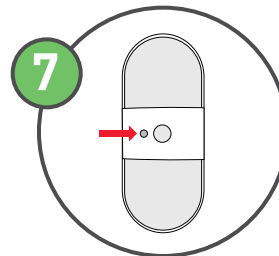
## EASY INSTALLATION:



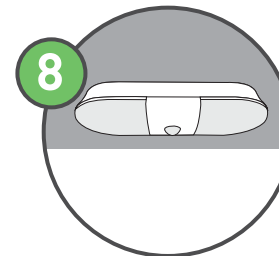
Remove cover by pushing catch in and up.



Place 3x AA batteries inside the unit (batteries not included). Ensure surface is clean from dust and grease (do not use household cleaners).

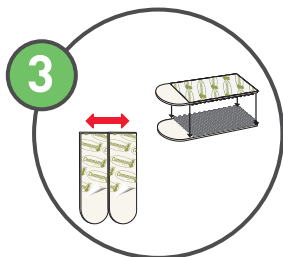


The battery saving dusk to dawn sensor will disable the motion sensor during the hours of daylight.

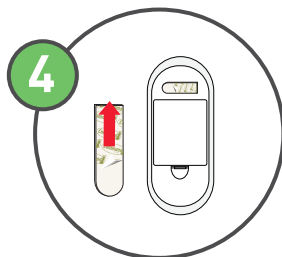


The light turns on when motion is detected and turns off after 30 secs of no movement.

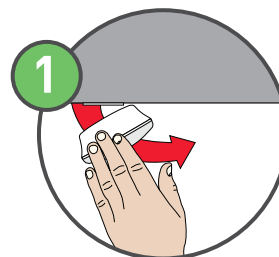
## EASY REMOVAL:



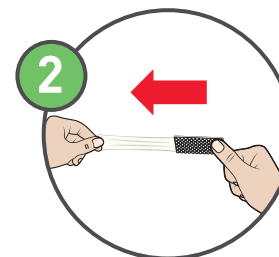
Separate strips. Press two strips together until they click.



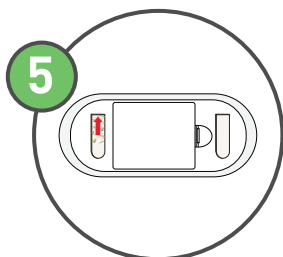
Remove one side of the liners and stick each pair of strips as shown. Press firmly.



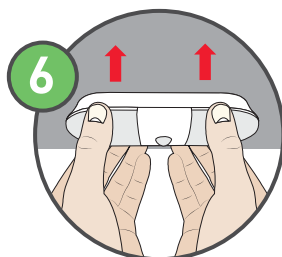
Grab the edge of the light and peel away from the surface. Do not pull straight off.



Stretch each strip slowly and straight against the surface not away from it to release.



Remove the remaining liners ready to stick on the surface.



Allow space on either side for removal. Press the light firmly to the surface for 30 secs.

Dimensions: 152mm x 63.5mm x 28mm  
Weight: 91g  
LED qty: 6  
Lamp wattage: 0.41W  
Lamp CCT: 4000K  
Lumens: 80  
Lamp life: 30000hrs  
Battery type: (3) AA batteries  
Sensor: PIR (Motion Activated)  
Auto shut off: 30 seconds  
Indoor use only

