

## Important Information

When using electrical appliances, in order to reduce the risk of fire, electric shock, and/or injury to persons, basic safety precautions should always be followed.

## For your safety...

Read all instructions carefully, even if you are familiar with the appliance.

Do not use this appliance if it appears to be damaged.

Do not look directly into the light source or point it into the eyes of others. This can lead to retinal damage.

This appliance is not watertight and is unsuitable for use in damp environments.

This is not a toy. Close attention is necessary when used near children.

Do not immerse the appliance in water or any other liquid.

Do not allow children to play with the packaging materials.

## CAUTION!

1. Position the batteries in the correct position and do not install batteries of different types, charge levels or capacity together.

2. Keep batteries away from children! Dispose of batteries correctly.

3. DO NOT dispose of in general waste or fire.



xtralite

Unit 3a Eden Business Park  
Dunns Close  
Nuneaton  
Warwickshire  
CV11 4NE

t: 02476 586 845  
e: info@xtra-lite.com

xtralite is a trading name of Trinity Xtras Ltd a Company  
registered in England No 4325172

One Year Limited Warranty  
Made in China  
For further product information visit  
[www.xtra-lite.com](http://www.xtra-lite.com)



xtralite



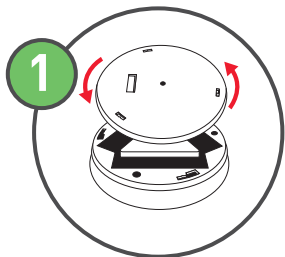
## omni Small LED Tap Light



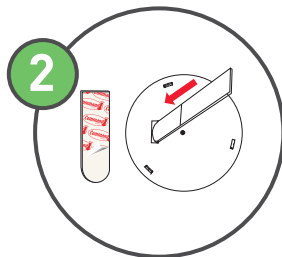
Instruction Manual  
Model: XL20717

Please read these instructions carefully before connecting  
or using the appliance. Keep for future reference.

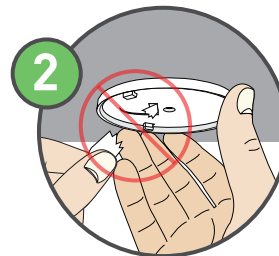
## EASY INSTALLATION:



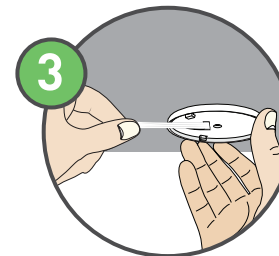
Remove the cover by rotating counter-clockwise. Ensure surface is clean from dust and grease (do not use household cleaners).



Remove the red liner and insert the tab into the slot. Press the strip onto the back of the cover.

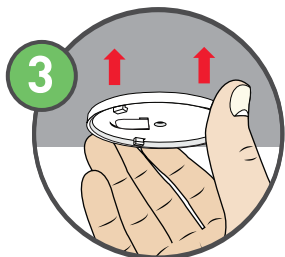


Never pull the strip away from the surface, always pull along the surface.

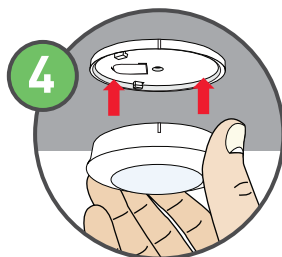


Stretch the strip slowly and straight against the surface not away from it to release.

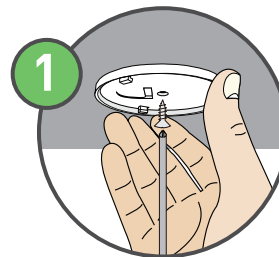
## SCREW FIXING:



Remove the black liner of the adhesive strip and then press and hold the base onto the surface for 30 seconds.



To attach the light, align the notches and turn the light clockwise.

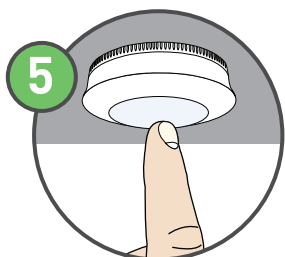


Mark the centre mounting hole in the cover and drive the screw into the mounting surface.

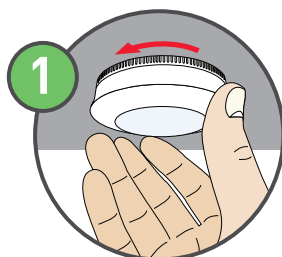


To attach the light, align the notches and turn the light clockwise.

## EASY REMOVAL:



Tap to turn the light on.



Turn counter-clockwise to release the light from the cover.

Dimensions: 75mm x 25mm  
Weight: 40g  
LED quantity: 3  
Lamp wattage: 0.45W  
Lamp CCT: 4000K  
Lumens: 40  
Lamp life: 30000hrs  
Battery type: (3) AAA batteries  
Power Switch: Tap ON/OFF  
Indoor use only