

# The "Palace Ice" Collection



©

40480S22

Crystal: IMPERIAL™ (-22) (pictured),  
Ø21 (12+6+3) x 60w, ↔39"(99cm) x ↓54"(137cm)  
Finish: Silver (S).

**IMPACT™** is a division of  
*james r. moder®*  
CRYSTAL CHANDELIER INC.

# IMPACT™

CRYSTAL CHANDELIERS

*james r. moder®*  
*moder.IMPACT™*  
Crystal Chandelier  
*Fashion*



(STRASS & ELEMENTS are now named Swarovski® crystals)

Also available in:

Swarovski crystals (-00)

SPECTRA® CRYSTAL (-11) by Swarovski

© Copyright 2015 James R. Moder®

Swarovski crystals, SPECTRA CRYSTAL, STRASS are registered trademarks of Swarovski AG.

**40469S22**  
Crystal: IMPERIAL™ (-22) (pictured),  
Ø8+4 x 60w, ↔28"(71cm) x ↓32"(81cm)  
Finish: Silver (S).

## The "Palace Ice" Collection

Truly an example of affordable luxury, this style fits within any budget and features a stunning combination of Crystal arms, columns and pendants.



40468S22

Crystal: IMPERIAL™ (-22) (pictured),  
Ø8 x 60w, ↔28"(71cm) x ↓30"(76cm)  
Finish: Silver (S).

**IMPACT™** is a division of  
*james r. moder®*  
CRYSTAL CHANDELIER INC.

# IMPACT™

CRYSTAL CHANDELIERS



**40843S22**

Crystal: IMPERIAL™ (-22) (pictured),  
Ø3 x 60w, ↔14"(36cm) x †15"(38cm)  
Finish: Silver (S).



**40466S22**

Crystal: IMPERIAL™ (-22) (pictured),  
Ø6 x 60w, ↔24"(61cm) x †25"(64cm)  
Finish: Silver (S).

(STRASS & ELEMENTS are now named Swarovski® crystals)

Also available in:

Swarovski crystals (-00)

SPECTRA® CRYSTAL (-11) by Swarovski

© Copyright 2015 James R. Moder®

Swarovski crystals, SPECTRA CRYSTAL, STRASS are registered trademarks of Swarovski AG.



**IMPACT™** Crystal Chandeliers were created to be a popular priced line, manufactured to high quality standards and engineered for best value.



©

**40462S22** (Wall Sconce)  
Crystal: IMPERIAL™ (-22) (pictured),  
Ø2 x 60w, ↔12"(30cm) x ↓15"(38cm) x  
7"(18cm) Ext.  
Finish: Silver (S).



©

**40465S22**  
Crystal: IMPERIAL™ (-22) (pictured),  
Ø5 x 60w, ↔21"(53cm) x ↓25"(63cm)  
Finish: Silver (S).

**IMPACT™** is a division of  
*james r. moder®*  
CRYSTAL CHANDELIER INC.

# IMPACT™

## CRYSTAL CHANDELIERS



**40463S22** (Wall Sconce)  
Crystal: IMPERIAL™ (-22) (pictured),  
Ø3 x 60w, ↔14"(36cm) x ↓18"(46cm) x  
9" (23cm) Ext.  
Finish: Silver (S).

**40464S22**  
Crystal: IMPERIAL™ (-22) (pictured),  
Ø4 x 60w, ↔16"(40cm) x ↓18"(46cm)  
Finish: Silver (S).

(STRASS & ELEMENTS are now named Swarovski® crystals)

Also available in:

Swarovski crystals (-00)

SPECTRA® CRYSTAL (-11) by Swarovski

© Copyright 2015 James R. Moder®

Swarovski crystals, SPECTRA CRYSTAL, STRASS are registered trademarks of Swarovski AG.



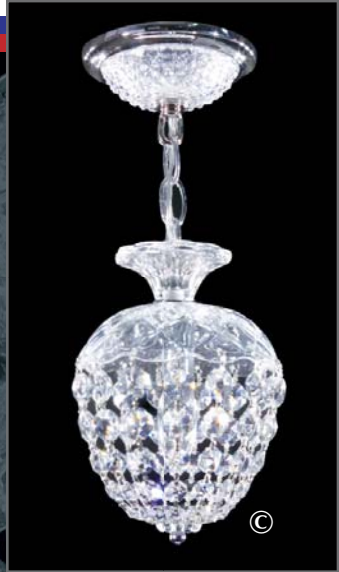
**We are a Leading International Manufacturer!**

To obtain the highest quality, consistency and value in our Crystal Chandelier production, we manufacture our product in our own factory and distribute in over 46 countries around the world!



**40794S22**

Crystal: IMPERIAL™ (-22) (pictured),  
Ø4 x 60w, ↔14"(36cm) x ↓16"(41cm)  
Finish: Silver (S).



**40791S22**

Crystal: IMPERIAL™ (-22) (pictured),  
Ø1 x 60w, ↔6"(15cm) x ↓8"(20cm)  
Finish: Silver (S).



**40796S22**

Crystal: IMPERIAL™ (-22) (pictured),  
Ø6 x 60w, ↔25"(64cm) x ↓25"(64cm)  
Finish: Silver (S).

**IMPACT™** is a division of  
*james r. moder®*  
CRYSTAL CHANDELIER INC.

# IMPACT™

## CRYSTAL CHANDELIERS



**40792S22 (Wall Sconce)**

Crystal: IMPERIAL™ (-22) (pictured),  
Ø2 x 60w, ↔12"(30cm) x ↓15"(38cm) x  
7"(18cm) Ext.

Finish: Silver (S).



**40798S22**

Crystal: IMPERIAL™ (-22) (pictured),  
Ø8 x 60w, ↔25"(64cm) x ↓27"(69cm)

Finish: Silver (S).

(STRASS & ELEMENTS are now named Swarovski® crystals)

Also available in:

Swarovski crystals (-00)

SPECTRA® CRYSTAL (-11) by Swarovski

© Copyright 2015 James R. Moder®

Swarovski crystals, SPECTRA CRYSTAL, STRASS are registered trademarks of Swarovski AG.