

CATALOG NO. \_\_\_\_\_



TYPE NO. \_\_\_\_\_

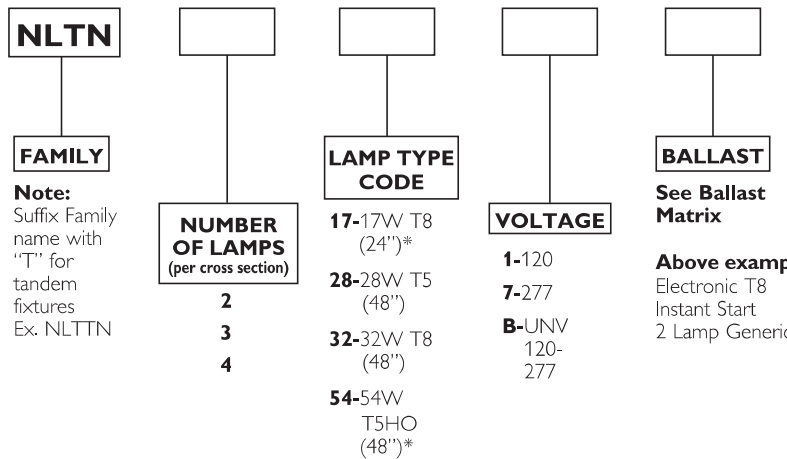
JOB NAME \_\_\_\_\_

# General Purpose Wraparound (NLTN)



## ORDERING INFORMATION

Catalog Number: Example: NLTN2321K2Y



## PRODUCT FEATURES

- Shallow profile and linear prismatic sides combine to reduce ceiling contrast.
- Acrylic shielding hinges along the unit's entire length for safety and ease of maintenance.
- Snap-on components provide simple, time-saving installation.
- Optional low-density mounting is available.
- Housing has 7/8" K.O. on each end for row mounting.

### OPTIONS

See Options List

Suffix catalog number with Option Code

\*2 light fixtures only. Not available in 3 or 4 light fixtures.

## PRODUCT AVAILABILITY

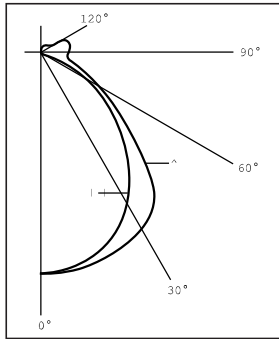
FAMILY	NOMINAL SIZE	NUMBER OF LAMPS (per cross section)	NUMBER OF LAMPS (per fixture)	LAMP TYPE CODE	LENGTH	WIDTH	HEIGHT
NLTN	2'	2	2	17	24"	8-5/8"	2-3/4"
NLTN	4'	2	2	28, 32, 54	48"	8-5/8"	2-3/4"
		3	3	28, 32	48"	13-7/8"	2-3/4"
		4	4	28, 32	48"	13-7/8"	2-3/4"
NLTTN	8'	2	4	28, 32, 54	96"	8-5/8"	2-3/4"
NLTTN	8'	3	6	28, 32	96"	13-7/8"	2-3/4"
NLTTN	8'	4	8	28, 32	96"	13-7/8"	2-3/4"



UL Listed for damp locations.

# General Purpose Wraparound (NLTN)

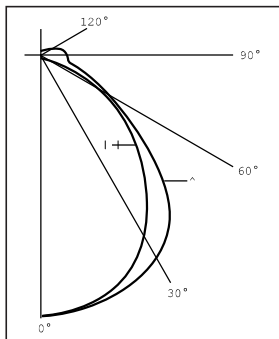
## Two-Lamp Photometric Data



**Coefficients of Utilization**  
Floor Cavity Reflectance 0.20

Room Cavity Ratio	RC RW	80%			50%			10%		
		50	30	10	50	30	10	50	30	10
1		71	68	66	65	63	61	57	56	55
2		63	59	55	58	54	52	51	49	4722
3		56	50	47	52	48	45	46	44	42
4		50	44	40	46	43	39	41	39	37
5		44	39	35	41	37	34	37	34	32
6		40	34	30	37	33	30	33	30	282
7		36	30	26	34	30	26	30	27	252
8		32	27	23	31	26	23	27	24	22
9		29	24	20	28	23	20	25	22	20
10		26	22	18	26	21	18	23	20	18

## Four-Lamp Photometric Data



**Coefficients of Utilization**  
Floor Cavity Reflectance 0.20

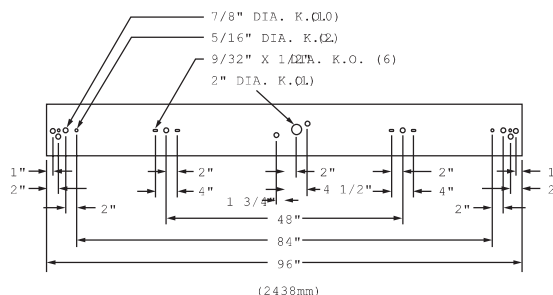
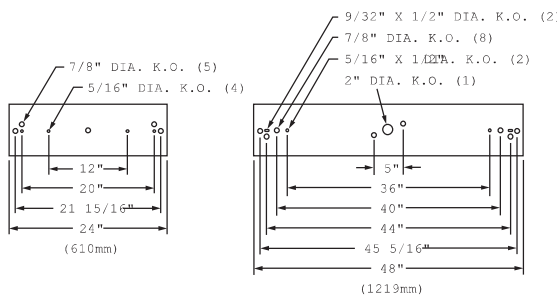
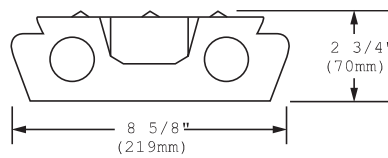
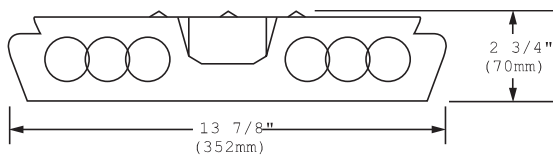
Room Cavity Ratio	RC RW	80%			50%			10%		
		50	30	10	50	30	10	50	30	10
1		67	64	61	62	59	57	54	53	52
2		59	55	52	54	52	49	49	47	45
3		52	48	44	48	46	42	44	42	40
4		47	43	38	43	40	36	40	37	35
5		42	37	33	39	35	31	36	33	30
6		38	32	29	35	31	28	32	29	272
7		34	29	25	32	27	24	29	26	232
8		30	25	22	29	24	21	27	23	20
9		27	22	19	26	21	18	24	20	18
10		25	20	17	23	19	16	22	18	162

## SPECIFICATIONS

Housing is die-formed of cold-rolled steel for uniformity and stability. Snap-on type wiring channel cover can be removed without the use of tools. Metal components are phosphate coated and finished in baked white enamel providing a minimum reflectance factor of 85%. Lens is virgin acrylic with prismatic bottom and linear refractive sides which hinge along the entire length on either side of fixture. All units (except 20 watt) are equipped with high power factor Class "P" ETL-CBM ballasts (120 volt 60 Hz is standard). Fixtures are UL-listed and bear union and UL labels.

## DIMENSIONS

All KOs are 7/8" dia. unless otherwise specified.



Dimensions and specifications subject to change without notice.