



# FIFISH E-GO

Easy Go, Just Dive

**Professional**

Next-generation Underwater  
Operational Solution





# FIFISH E-GO

## Professional Underwater Operational Solution

### FIFISH E-GO

---

- AI Vision Station Lock
- 4K UHD & 176° FOV Camera Lens
- 10,000 Lumen LED Lights, 160° Beam Angle
- 360° Omnidirectional Movement
- Dual Swappable Battery System
- Dual-load Q-interface Ports 3.0
- Modular Quick-release Design
- Powerful Closed Wing Motors

# Elite & Aesthetic Underwater Robot

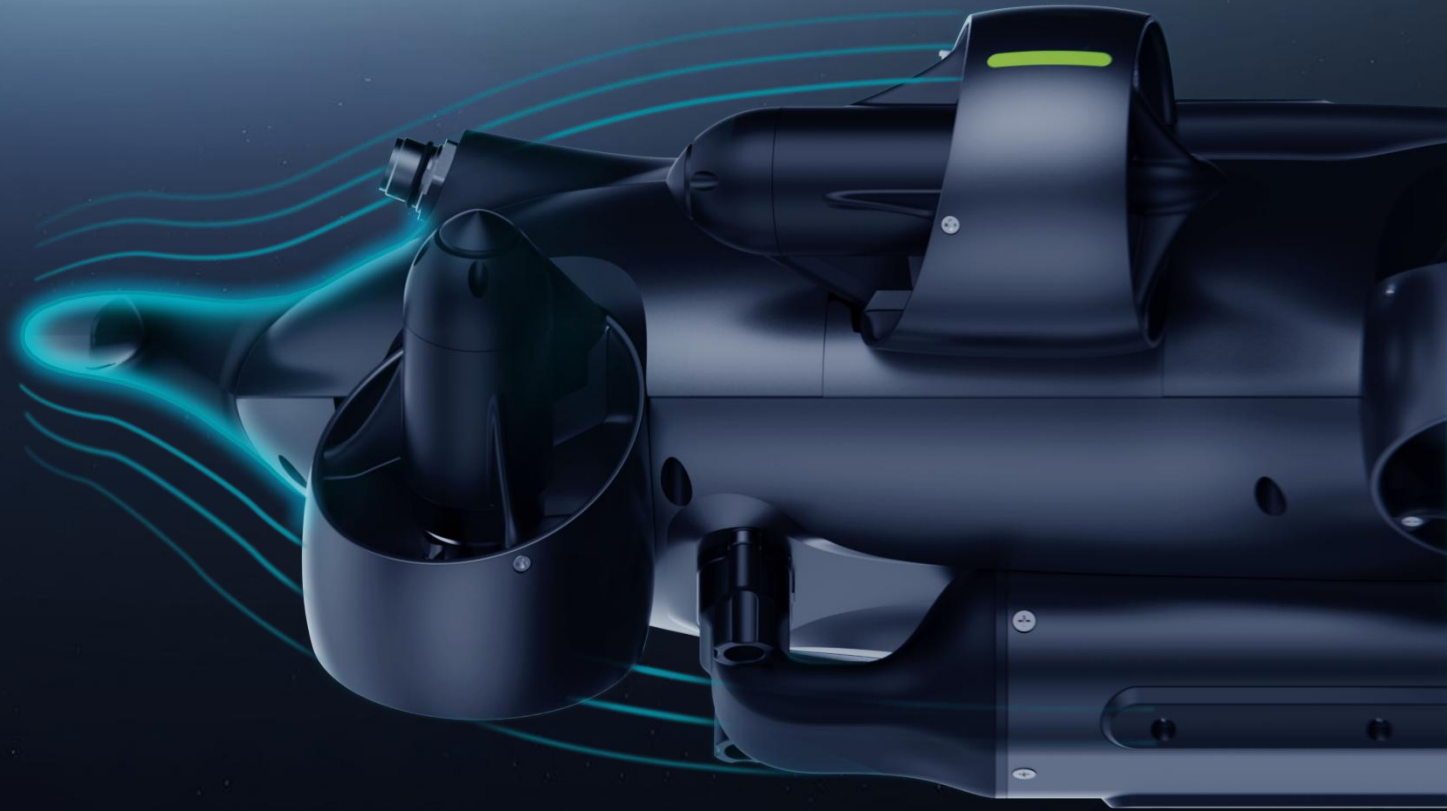
The brand new FIFISH E-GO features a sleek and curved exterior inspired by the hammerhead shark, providing the E-GO with exceptional resistance to underwater currents.





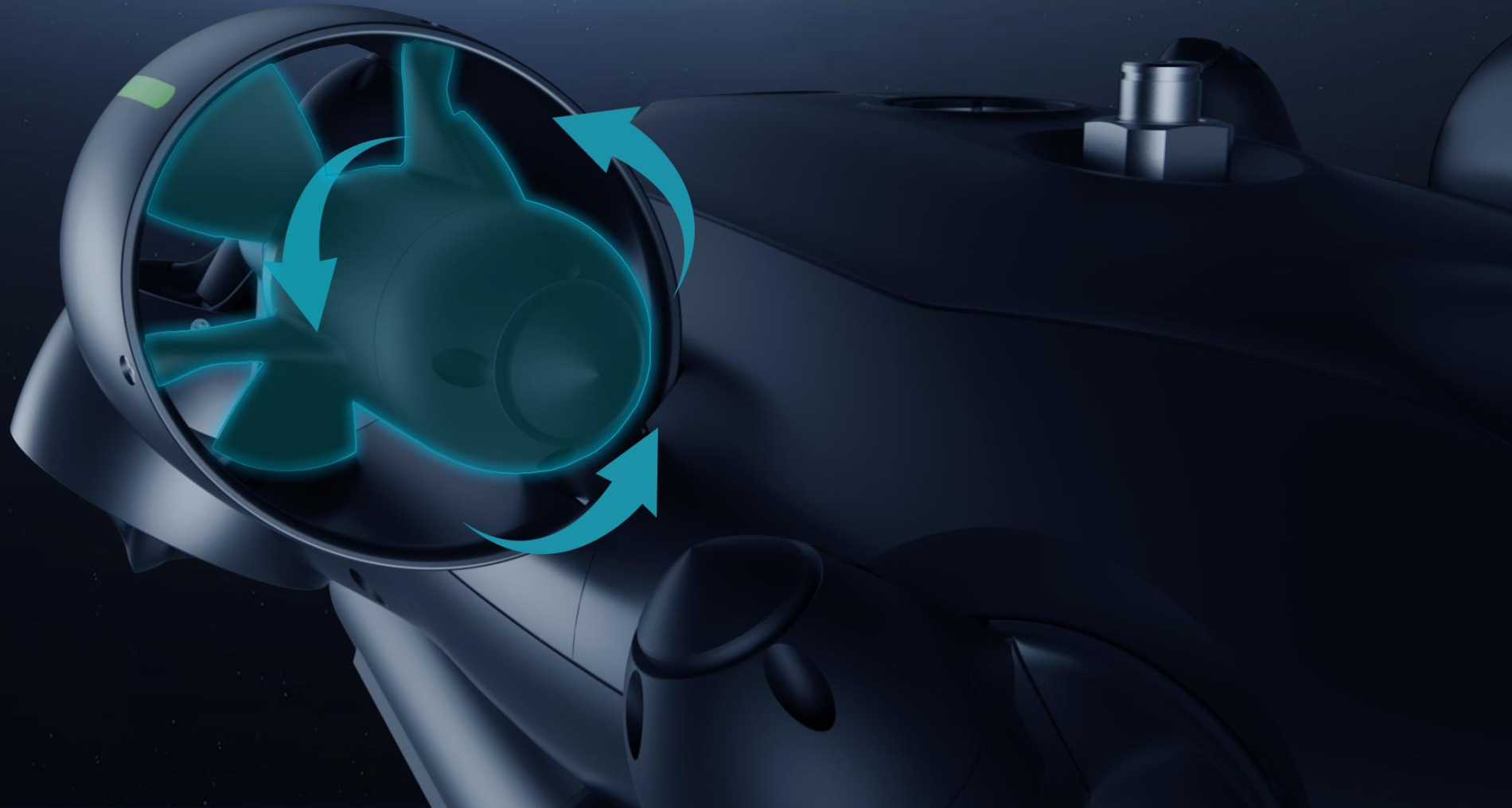
# Fluid Dynamic Design & Build

With its biomimetic shark tail fin design and streamlined fluid dynamics, the FIFISH E-GO effortlessly maneuvers through underwater operations, smoothly navigating the oceans and currents.



# Advanced Power & Strength

FIFISH E-GO's close wing design, equipped with rugged aluminum alloy propellers, delivers twice the power and stability than previous generations.





## **Omnidirectional & Fully-flexible Movement**

FIFISH E-GO has 360° omnidirectional movement and hovering capabilities, enabling the robot to carry out underwater tasks with complete freedom and flexibility.



# Ultra-wide-angle Vision, See Beyond Limits

The E-GO is equipped with a 176° ultra-wide-angle camera lens, achieving an industry-leading 146° field-of-view underwater.

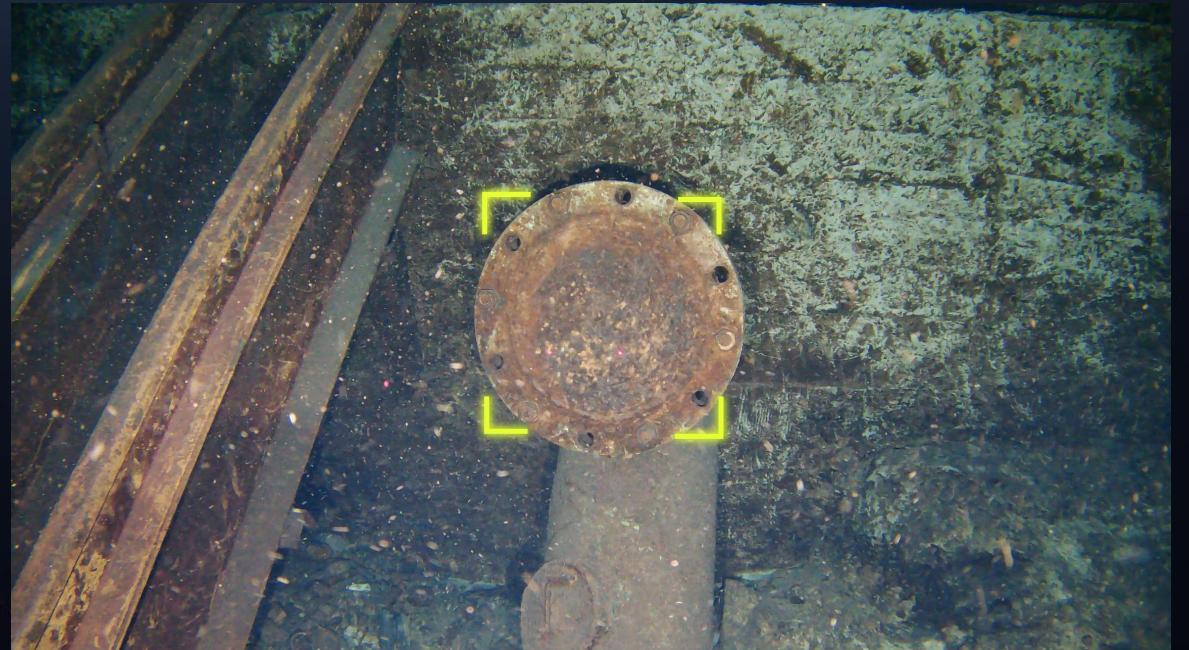
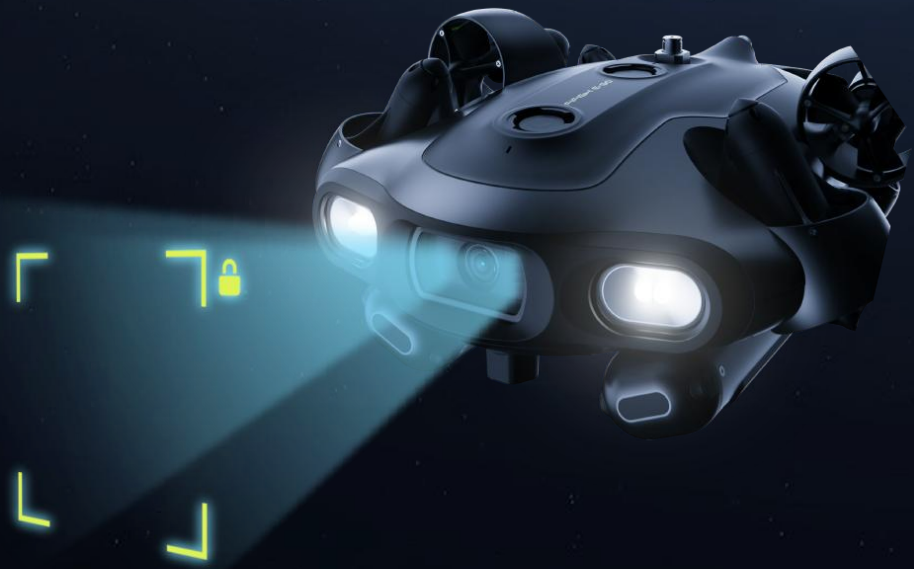
With a macro focus range of 10cm, FIFISH E-GO achieves maximum proximity to targets, allowing for a clear field of view across a range of underwater environments.



# Empower Your Operations with AI

The AI visual lock function enables one-touch locking of underwater targets, providing automatic resistance to currents and delivering reliable visual support for underwater operations.

FIFISH's self-developed AI algorithm automatically identifies and filters underwater plankton, resulting in clearer and more refined visuals.





# Omnidirectional & Fully-flexible Movement

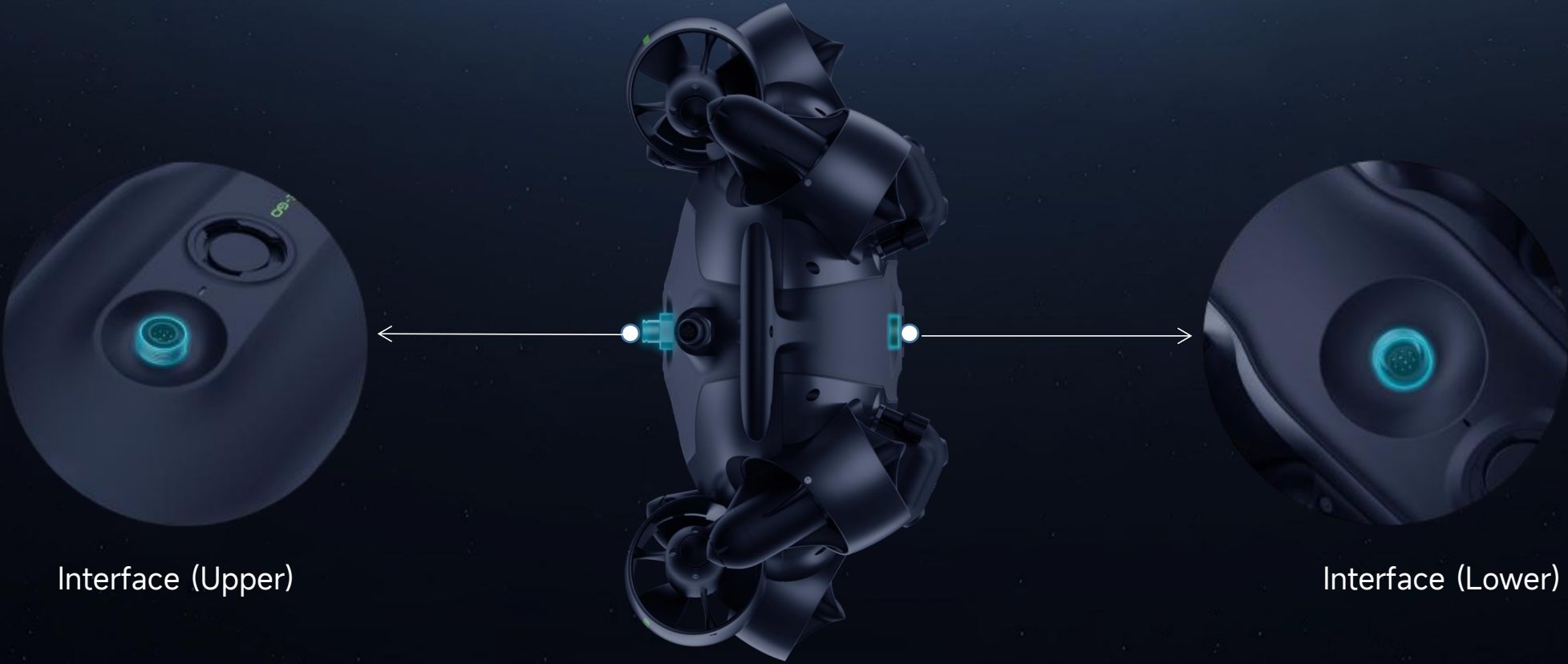
FIFISH E-GO is equipped with four series-connected LED lights, delivering 10,000 lumens and a wide illumination range of 160°, fully brightening the path for deep-sea operations.

10000LED



# Double the Interface Ports, Twice the Professionalism

By redesigning the structure and build of the E-GO, the robot can be equipped with dual payload interfaces, called Q-Interface 3.0, allowing for the simultaneous use of up to two professional add-on tools.





# Quick-release Design for Components

Newly-upgraded quick installation and removal of components and devices, with attachment and detachment speeds of up to 3 seconds, greatly improve the operational efficiency of users.



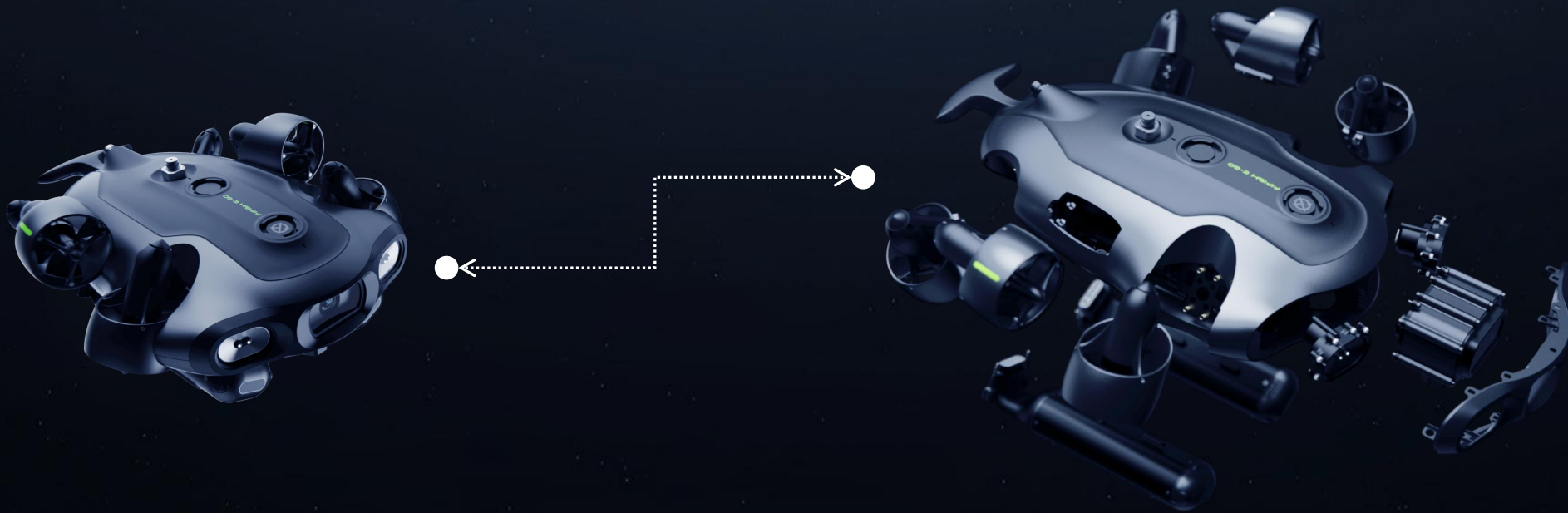


# Highly Modular Design & Build

The new motor quick-release module enables fast installation and removal of components, allowing for immediate recovery to full operational status and readiness for the task at hand.

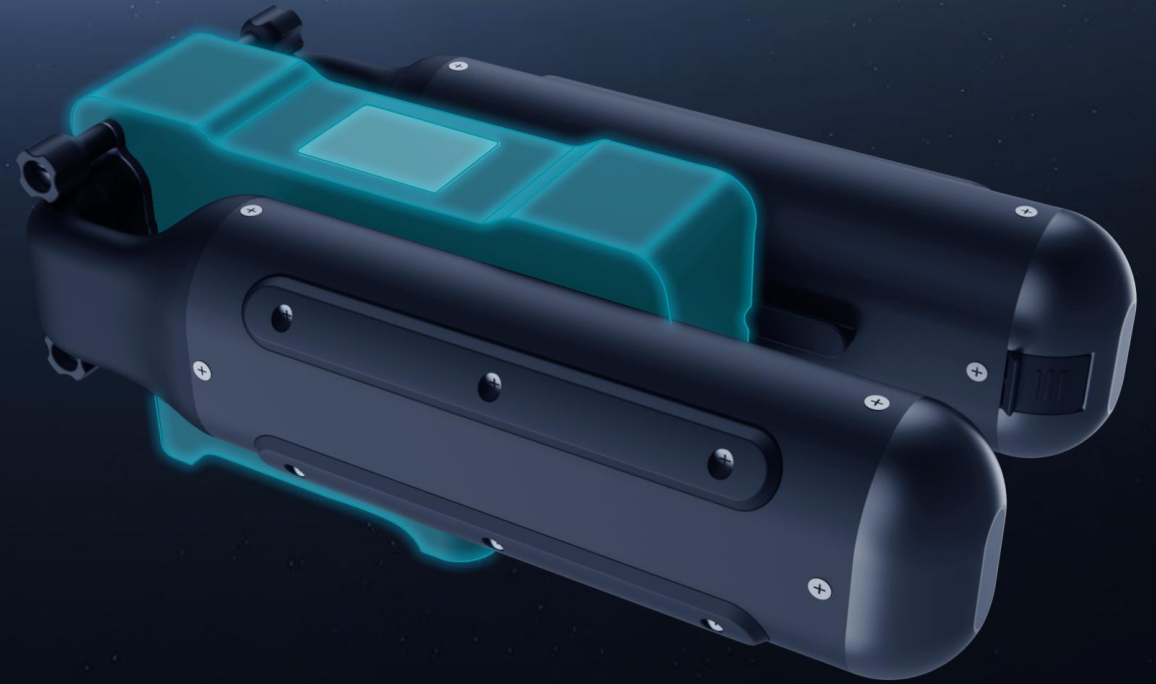
E-GO's versatile modular design supports quick replacement of light sources and imaging modules, among other features.

Even in the event of light or camera malfunctions during underwater operations, spare parts can be quickly installed and removed to ensure smooth progress and successful completion of the mission.



# Battery Manager for Worry-free Operation\*

Paired with the Q-Energy Station battery fast-charging supply station, concerns about low power and short battery life are alleviated, making it perfectly suitable for long-duration underwater operations.



\* Note: The Q-Energy Station battery fast-charging supply station is an optional accessory and needs to be purchased separately or as part of a package.

# Instant Battery Replacement

FIFISH has introduced an all-new swappable design for its power source, allowing the E-GO to replace batteries instantly without prolonged delays, restoring the robot to full power capacity in seconds.

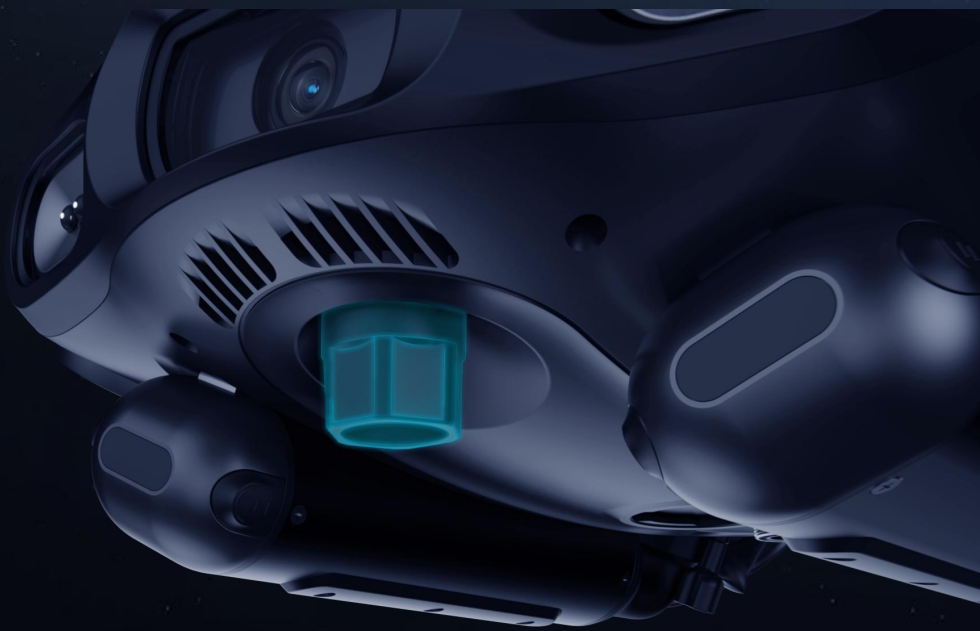
Additionally, the quick-release structure has been upgraded with waterproof, pressure-resistant, and corrosion-resistant connectors, enabling rapid battery replacement with safety and peace of mind.





# Quick Data Storage & Transfer

The robot is equipped with a built-in Micro SD card slot, allowing for quick transfer of films and images. It also supports intelligent monitoring for leak detection.



①



②

# Powerful Accessories, Expanding Capabilities

FIFISH E-GO supports the expansion and simultaneous use of multiple accessories, enabling more efficient, precise, and secure operations to meet the diverse requirements of the marine industry.





# Application Scenarios



**Emergency Search  
& Rescue**



**Public Security &  
Law Enforcement**



**Underwater  
Inspection &  
Monitoring**



**Aquaculture &  
Fisheries**



**Water Resources  
Management**