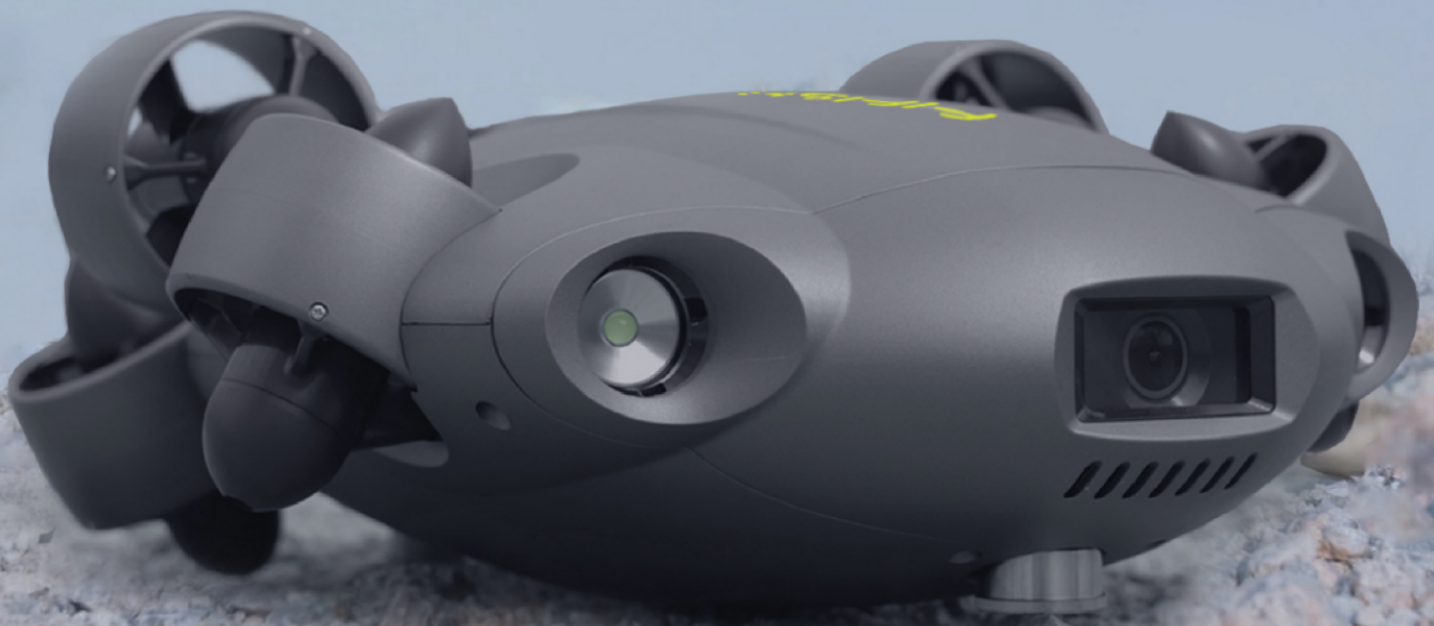


Professional

**COMPACT SIZE & OPERATIONAL
ROV PLATFORM**



FIFISH **V6** **EXPERT**
UNDERWATER ROBOT

High-Performance & Multi-Functional
Underwater **Productivity Tool**

Professional

Compact Size & Operational ROV Platform

High-Performance & Multi-Functional Underwater Productivity Tool

FIFISH V6 EXPERT

FIFISH V6 EXPERT is a professional-level underwater robot and multi-capable tool for enhancing your underwater missions and operations. The V6 EXPERT can be equipped with an onshore power supply system that delivers optimal diving performance and operating time.

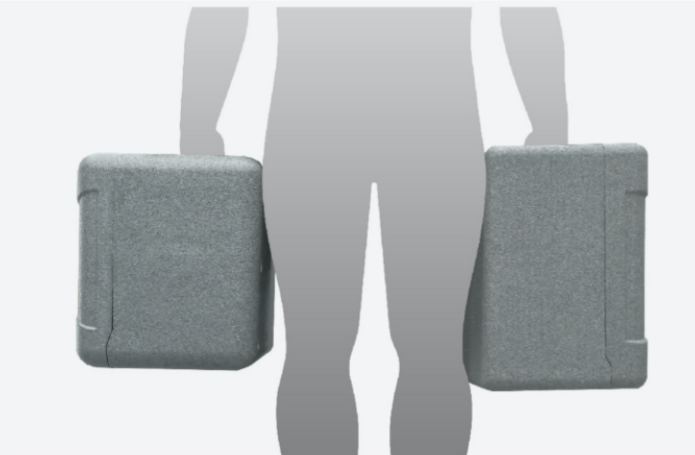
100m Max Depth	3 Knots Max Speed	-10~60°C Temperature Range	1.5 Hrs (Against 1m/s Currents) 6 Hrs (In Still Waters)
--------------------------	-----------------------------	--------------------------------------	--

Long Lasting Power. High Performance & Reliability

Seamless and quick deployment of energy packs for smooth, lengthy and uninterrupted diving sessions.



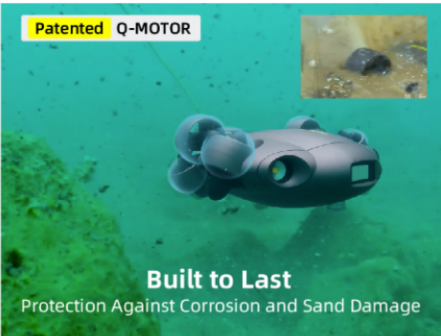
Quick & simple installation for continuous workflow



For easy carrying, deployment, operation & maintenance

Upgraded Build & Performance

Patented Q-MOTOR



Built to Last
Protection Against Corrosion and Sand Damage

Patented 360° Omni-directional Mobility



Complete freedom of movement in the aquatic world

Patented Q-STEADY2.0

Introducing the FIFISH's latest Q-Steady2.0 Stabilization System, delivering ultra-smooth and steady footage no matter where your challenging missions take you.

Efficient in Currents

A Streamlined design for minimum water resistance and enhanced power efficiency, the V6 EXPERT delivers a continuous flow of work for 1.5 hours event against currents of 1m/s .

4K UHD Low Noise Shooting for Cinematic Clarity

The FIFISH V6 EXPERT comes equipped with a UHD 4K underwater camera lens, along with a 166° ultra-wide field of view, 12-megapixel resolution, 240 FPS slow-motion filming capabilities, and much more. V6 EXPERT's vision enhancement algorithms bring out the vibrancy of the underwater environment, so you can capture every detail needed in your aquatic operations and missions.



Supports
DNG Format



12 Megapixel
Resolution



f/2.5 Aperture



166° Field of View



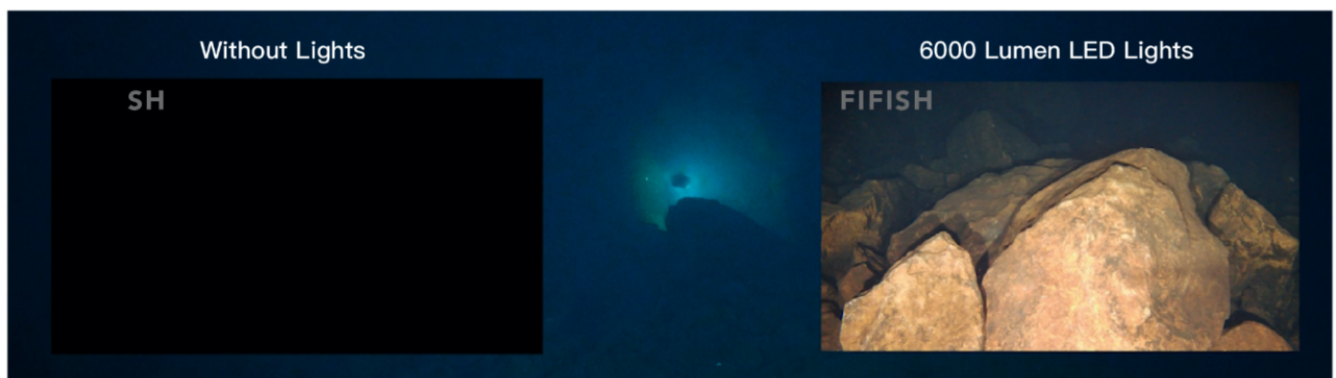
240 FPS Slo-Mo
Filming



4K Ultra HD
Video Quality

Enhanced Lighting for Optimal Clarity

The FIFISH V6 EXPERT comes equipped with a pair of ultra-bright 6000 lumen LED lights alongside its 4K UHD camera, delivering brilliant, vivid and vibrant images and footages within even the darkest spaces



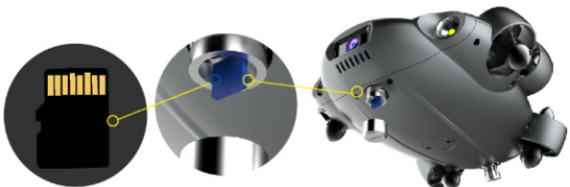
VR Intelligent Head Tracking

FIFISH V6 EXPERT applies unique sensory controls that provide the user a truly immersive underwater experience from the ROV's first-person perspective. Through the smart VR goggles, take **QYSEA patented** full 360° directional and posture control of the V6 EXPERT simply by rotating the head. This intelligent feature is accurate, easy to use, and a breakthrough in underwater exploration.



■ Micro SD Card Fast Transfer & Storage

The SD card can be taken out of the V6 EXPERT for data exporting with ease. The ROV comes equipped with a 128GB card for ample space and storage of high-definition films and images.



■ Powerful Battery with Quick Charge Enabled

The V6 EXPERT has a 14400mAh super-capacity battery that provides long-lasting battery life, quick charging capabilities, and multiple safety and security mechanisms.



Q-CHARGE: Fast-charging to 90% capacity within 1 hour

■ Light, Portable & Worry Free

FIFISH V6 EXPERT helps your underwater operations become organized and worry-free. Its compactness allows easy transportation to wherever your missions take you, and its power efficiency delivers you continuous and uninterrupted diving sessions.

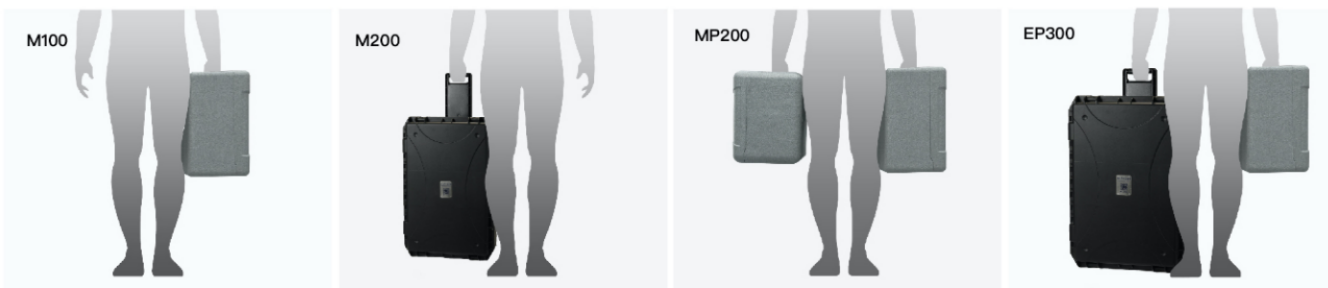


EPP Case Specifications:
 Length: 728mm
 Width: 470mm
 Height: 272.5mm

V6 EXPERT M100 Standard Accessories



■ FIFISH V6 EXPERT PACKAGE



SKU	M100	M200	MP200	EP300
Cable Length	100m	200m	200m+100m	300m+100m
Spool	Manual Spool *1	Manual Spool *1	Manual Spool *2	E-Spool *1 Manual Spool *1
Package	EPP Box *1	Industry Case *1	EPP Box *2	Industry Case *1 EPP Box *1
OPSS	x	x	√	√

Applications & Scenarios

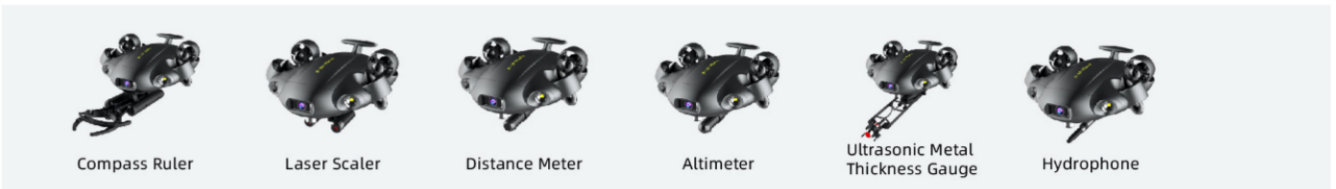


Tools & Add-Ons

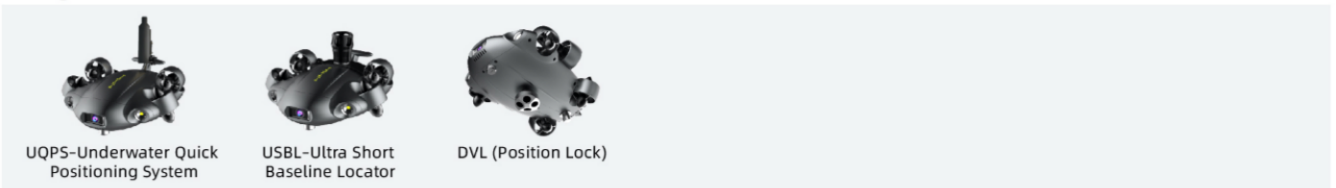
Inspection Tools



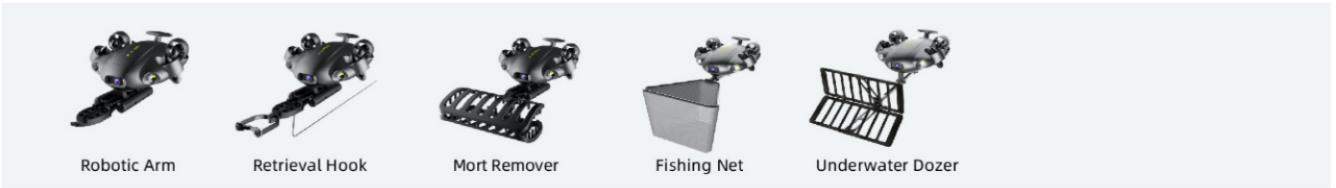
Measurement Tools



Navigation Tools



Manipulator Tools



Water Quality Tools



■ ROV

Dimensions	383mm x 331mm x 143mm
Weight	4.6kg
Thrusters	6 Thrusters (FIFISH Q-Motor Technology)
Maneuverability	6 Degrees of Freedom
	Movement: left & right, up & down, forward & backward Rotation: 360° pitches, 360° rolls, 360° yaws
Posture Lock™	Lock the ± 0.1° pitch or roll angle, in any direction
Hovering	Keep the ROV suspending in ± 1 cm
Speed	Maximum 3 knots (1.5 m/s)
Depth Rating	100M
Temperature Range	-10 °C ~ 60 °C
Battery	Operational Tie: 1.5h against 1m/s currents; 6 hours still waters
	14400mAh super-capacity battery
	1 Hour Quick Charging (90% Capacity)
	Charging voltage: 12.6V
Batter Type	Li-ion Panasonic 21700

■ LED Lights

Brightness	6000 Lumen LED
CCT	5500K (Correlated Color Temperature)
Beam Angle	120°
Levels	3 Brightness Levels

■ Charger

ROV	Input: 100-240V, 50/60 Hz , 3.0A MAX
	Output: 12.6V = 10A
RC	Input: 100-240 V, 50/60 Hz , 0.5 A MAX
	Output: 5 V= 3A

■ Tether & Spool

Length	100m standard (200m/300m optional)
Breaking Force	100kgf
Tether Diameter	4.0mm
Dimensions	238 mm x 213 mm x 205 mm

■ Camera

Sensor	1/2.3" SONY CMOS
Pixels	12MP
ISO Range	100-6400 In Auto / Manual
Lens	Field of View: 166°
	Aperture: f/2.5
	Minimum Focusing Distance: 0.4 m
Shutter Speed	5~1/5000 Second
Burst Shooting	1 / 3 / 5 / 10 Frames
White Balance	2500K-8000K
Exposure Comp.	- 3.0 EV ~ + 3.0 EV
Photo Resolution	4:3: 4000 x 3000
Photo Format	JPEG, RAW (DNG)
Video Resolution	4K UHD: 25/30 fps
	1080P FHD: 25/30/50/60/100/120 fps
	720P HD: 25/30/50/60/100/120/200/240 fps
Video Format	MPEG4- AVC/H.264, HEVC/H.265
Stabilization	EIS (Electronic Image Stabilization)
Colour Encoding	NTSC & PAL
Storage	Pluggable, 128GB standard

■ Controller

Wireless	5GHz WiFi, 11a,n,ac
Battery Life	Up to 4 hours
SD Card Support	Micro-SD Card FAT32 & EXFAT Format (to 128GB)
HDMI Output	QYSEA HDMI Output Box

■ Q-Interface

Ports	1
Material	Stainless steel 316
Voltage	9~12V

FIFISH V6 EXPERT Details: <https://www.qysea.com>

※Product specifications and accessories are subject to change without notice.

■ Component Breakdown



Offizieller Partner von QYSEA für Österreich und Deutschland.

DRONELINE

DRONELINE Enterprise
 Friedhofstraße 19
 A-2351 Wiener Neudorf
 info@droneline.shop
<https://droneline.shop>



FIFISH
 UNDERWATER ROBOT