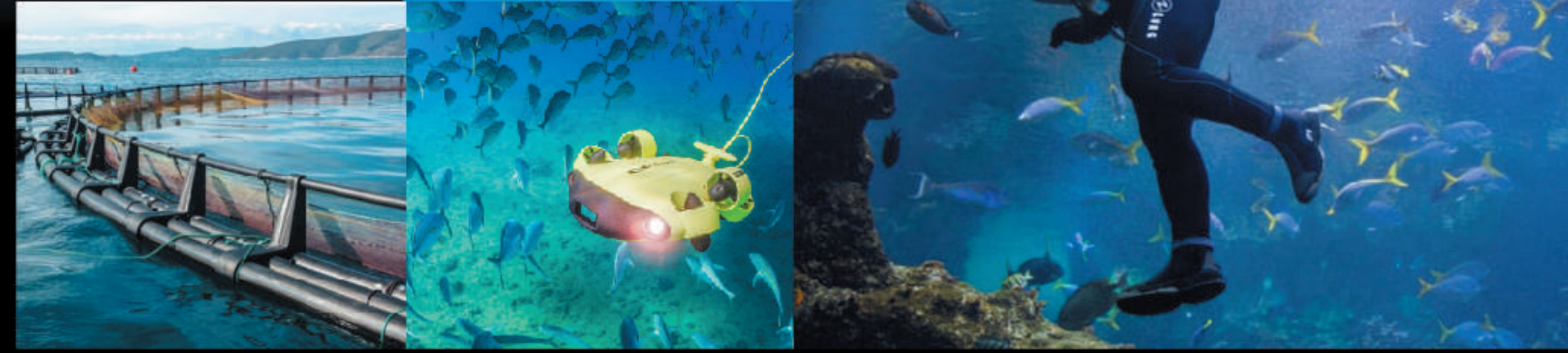


BUILT FOR EXPLORATION

The FIFISH V6 is built to handle and excel across a wide range of applications underwater. Explore the oceans and perform inspections with ease!

COMMERCIAL

- Research & Education
- Boat & Dock Checks
- Filming & Photography
- Aquatic Farming
- Search & Rescue

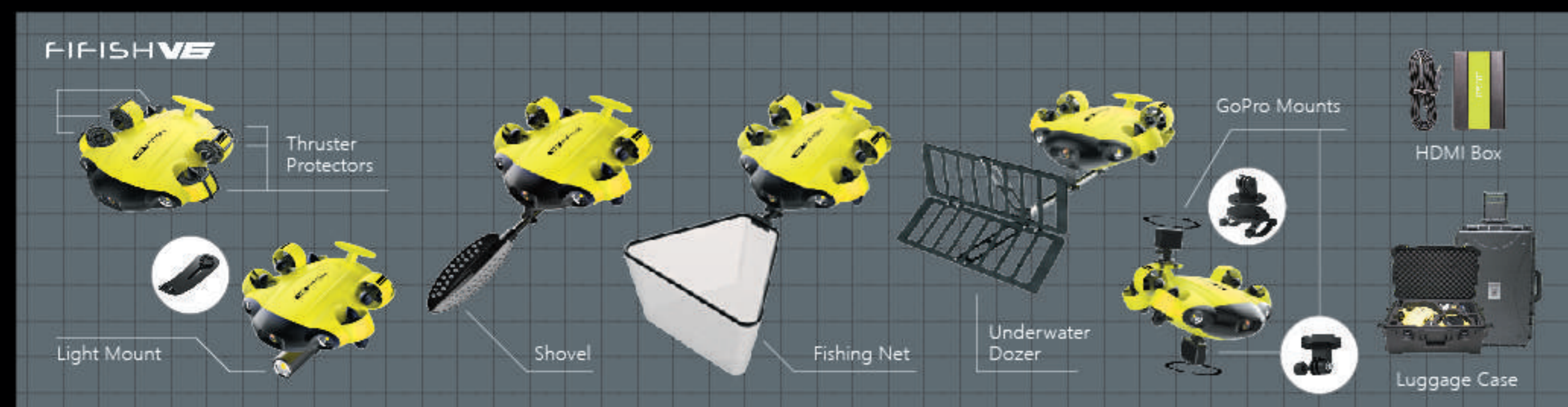


LEISURE

- Yachting & Boating
- Friends & Gatherings
- Diving & Snorkeling
- Fishing & Hunting
- Explorations



ADDITIONAL TOOLS



*Product specifications & accessories are subject to change without notice. Please check with your dealer for the release date.

FIFISH V6 Specifications



ROV

Dimensions	383 mm x 331 mm x 143 mm
Weight	3.9 kg (8.6 lbs)
Thrusters	6 Thrusters
Maneuverability	6 Degrees of Freedom
	Movement: left & right, up & down, forward & backward Rotation: 360° pitches, 360° rolls, 360° yaws
Posture Lock™	Lock the ± 0.1° pitch or roll angle, in any direction
Hovering	Keep the ROV suspending in ± 1 cm
Speed	Maximum 3 knots (1.5 m/s)
Depth Rating	100 M (328 ft)
Temperature Range	-10 °C ~ 60 °C (14 °F ~ 140 °F)
Max Dive Time	Up to 4 hours
Battery	Rated Capacity: 9000 mAh / 97.2Wh
	Charge Voltage: 12.6 V 1 Hour Quick Charge
Battery Type	Li-ion Panasonic 18650

LIGHTS

Brightness	4000 Lumen LED
CCT	5500 K (Correlated Color Temperature)
Beam Angle	120°
Levels	3 Brightness Levels

CHARGER

ROV	Input: 100-240 V, 50/60 Hz, 1.3 A MAX
	Output: 12.9 V = 6A
RC	Input: 100-240 V, 50/60 Hz, 0.5 A MAX
	Output: 5 V = 3A

SPOOL

Dimensions	238 mm x 207 mm x 160 mm
Capability	Hold up to 100m of tether (328ft)

CAMERA

Sensor	1/2.3" SONY CMOS
Pixels	12M
ISO Range	100-6400 In Auto / Manual
Lens	Field of View: 166°
	Aperture: f/2.5
	Minimum Focusing Distance: 0.4 m
Shutter Speed	5-1/5000 Second
Burst Shooting	1 / 3 / 5 / 7 / 10 Frames
White Balance	2500K ~ 8000K
Exposure Comp.	- 3.0 EV ~ + 3.0 EV
Photo Resolution	4:3: 4000 x 3000
Photo Format	JPEG, DNG
Video Resolution	4K UHD: 25/30 fps
	1080P FHD: 25/30/50/60/100/120 fps 720P HD: 25/30/50/60/100/120/200/240 fps
Video Format	MPEG4- AVC/H.264, HEVC/H.265
Stabilization	EIS (Electronic Image Stabilization)
Colour Encoding	NTSC & PAL
Internal Storage	64 GB standard

CONTROLLER

Wireless	5GHz WIFI, 11a,n,ac
Battery Life	Up to 4 hours
Copy & Download	Format in FAT32 & EXFAT (Up to 128GB)

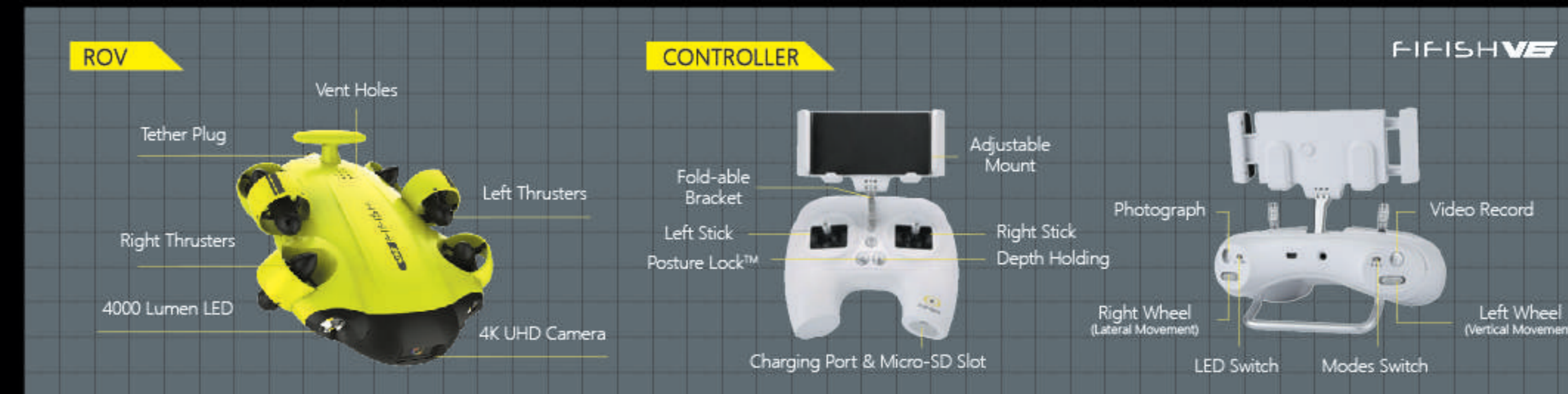
TETHER

Length	Standard 100 m (328ft) on Spool
Breaking Force	80 kgf

FIFISH V6 Product Page
<https://www.qysea.com/products/fifish-v6/>

*Product specifications & accessories are subject to change without notice.

Component Breakdown



Place Order Here



View Video Here

Shenzhen Qi Yuan Science and Technology Co., Ltd.
 1/F, Phase 2, Galaxy Incubator
 No.1 YaNan Road, Bantian Street
 Longgang District, Shenzhen, Guangdong, China
 Postal Code: 518131
 Phone: +86-755-2266-2313

QYSEA

EXPERIENCE THE UNDERWATER WORLD



World's 1st OMNI-4K Underwater Robot

FIFISH V6
 UNDERWATER ROBOT

Escape to the Ocean



EXPERIENCE THE AQUATIC WORLD



FIFISH V6



TRUE-COLOR IMAGING



FULLY OPTIMIZED CAMERA

World's 1st OMNI · 4K Underwater Robot

Meet FIFISH V6, the world's first omni-directional 4K underwater drone that gives you the full freedom to drive in any direction. Powered with 6 patented thrusters along with its 4K HUD camera and 100m depth rating, the V6 empowers you to explore the vast underwater world limitless possibility.



Easy to carry, Lightweight & compact

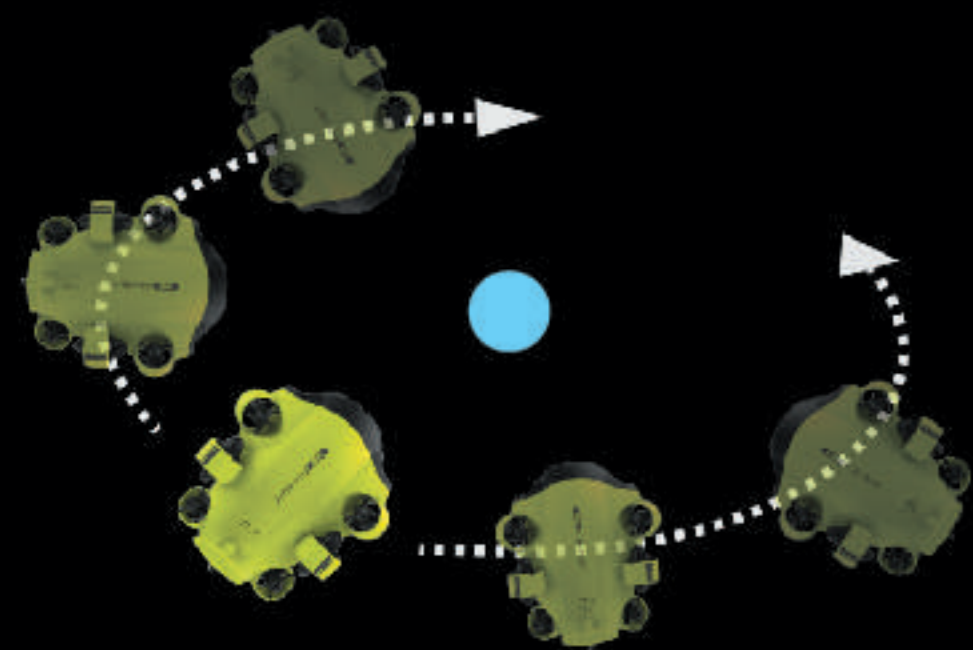
Depth **100m** | Speed **3 knots** | Temp. **-10~60°C** | Battery **Up to 4 Hrs**

Freedom of Movement

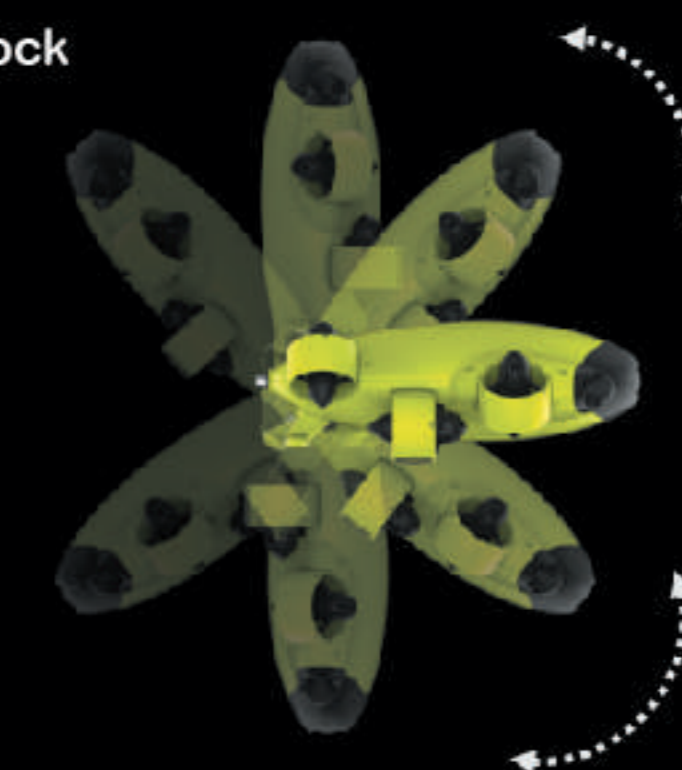
FIFISH V6's thrusters deliver you 6 degrees of freedom, allowing mobility in all directions as well as rotations in 360° rolls, pans & tilts.

FIFISH V6's Posture Lock™ secures the angle of your drone as you move in any direction.

Arc Rotation



Pitch & Lock



90° Up

90° Down

Lateral



VR Head Tracking (with VR Box)

FIFISH V6 integrates VR smart technology that fully immerses the user into the underwater world. With the Head Tracking feature, put yourself into the drone's first-person-view and control where you want to go simply by turning your head.

Move your head left, right, up and down, diagonally, and the V6 will rotate itself intuitively. VR goggles are included in the package for users to enjoy.

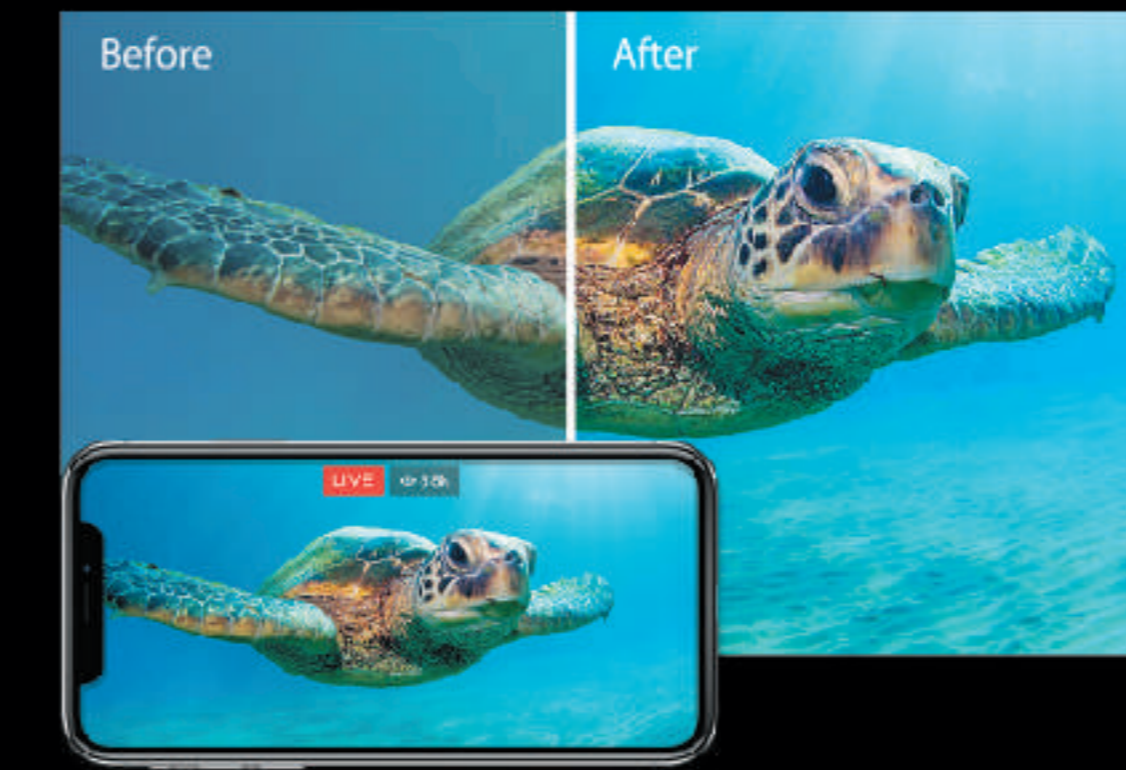


HEAD TRACKING

※Separate smart phone/ device is required for this function VR function.

4000 Lumen LEDs · Capture all the beauty!

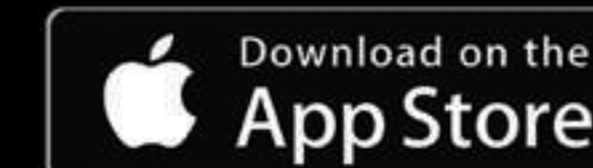
The FIFISH V6's powerful lumen LED headlights drastically enhance your underwater images and footage. In addition, its AI image-sharpening and true-color algorithms help to reproduce the original vibrant colors of the aquatic world.



All-Inclusive APP

V6's dedicated app includes customizable camera settings, exciting control modes, instant sharing options, wireless content transfers, and many more.

[Main functions] 6 modes of control (UAV-USA, UAV-JPN UAV-CHN, ROV-USA, ROV-JPN, ROV-CHN), SNS sharing, hiding & depth display, color restoration, SD card transfer



4K UHD Camera System

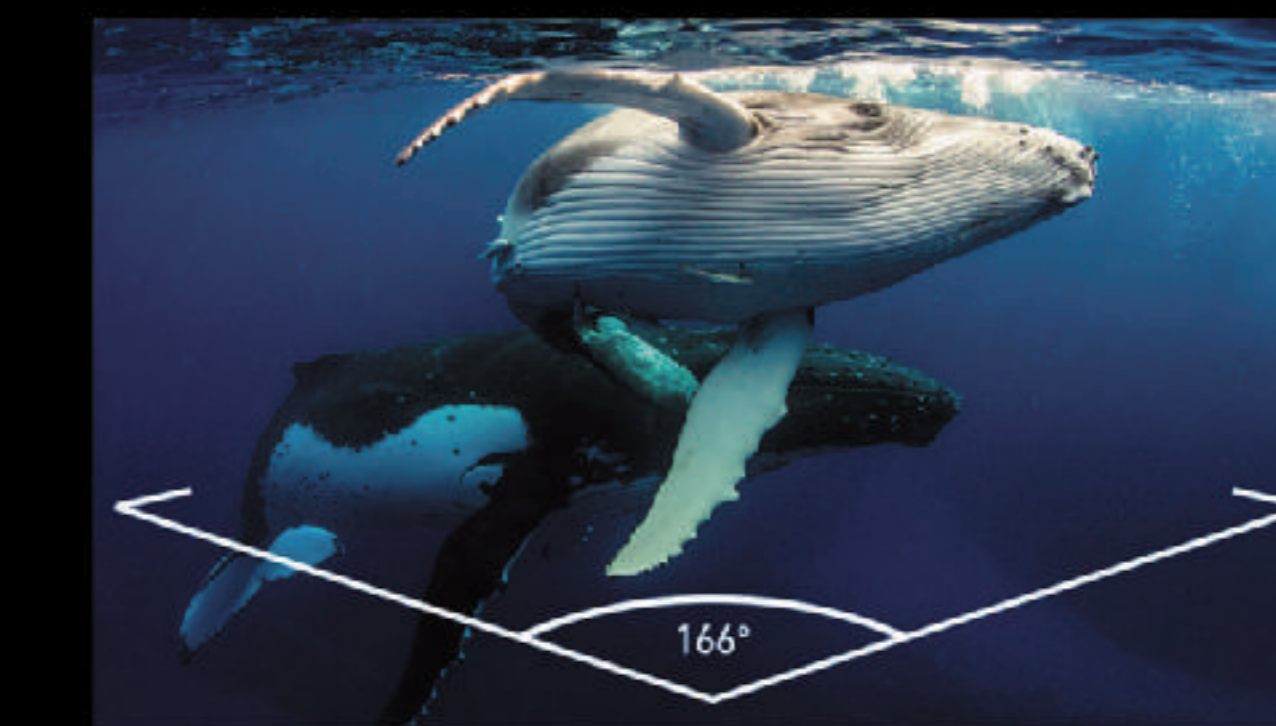
FIFISH V6's camera system delivers 4K UHD Resolution · 1080P/120FPS slow motion footage, bringing you the greatest cinematic clarity in underwater filming.

HDMI Live Broadcasting (video output: 1080p), along with H.265/ HVEC and DNG (RAW) formats are also supported.



166° Wide-Angle Lens

Equipped with a 1/ 2.3 "SONY CMOS sensor, along with a 166° FOV wide angle lens, FIFISH V6 brings you the bigger picture and creates incredible wide-screen cinematic shots for your underwater adventures.



HDMI Live Streaming

Deliver the excitement and broadcast your ocean adventures to the world! With our HDMI box and one-touch social sharing options, show your adventures through a large HDTV screen at full HD. [HDMI Box accessories sold separately]



Long-Lasting Battery

The V6 is equipped with a large capacity and durable battery, operating for up to 4 hours each dive. From commercial to leisure applications, explore and discover free from low-battery anxiety.





■ ROV

Dimensions	383 mm x 331 mm x 143 mm
Weight	4.1 kg
Thrusters	6 Thrusters
Maneuverability	6 Degrees of Freedom
	Movement: left & right, up & down, forward & backward Rotation: 360° pitches, 360° rolls, 360° yaws
Posture Lock™	Lock the ± 0.1° pitch or roll angle, in any direction
Hovering	Keep the ROV suspending in ± 1 cm
Speed	Maximum 3.0 knots
Depth Rating	100 M (328 ft)
Temperature Range	-10 °C ~ 60 °C (14 °F ~ 140 °F)
Max Dive Time	Up to 6 hours
Battery	Rated Capacity: 14,400mAh/155.52Wh
	Charge Voltage: 12.6 V 1 Hour Quick Charge (70%)
Battery Type	Li-Ion Panasonic 21700

■ LIGHTS

Brightness	4000 Lumen LED
CCT	5500 K (Correlated Color Temperature)
Beam Angle	120°
Levels	3 Brightness Levels

■ CHARGER

ROV	Input: 100-240,50/60Hz,3.0 A Max
	Output: 12.6V=10A
RC	Input: 100-240,50/60Hz,0.5 A Max
	Output: 5 V = 3A

■ SPOOL

Dimensions	238 mm x 213 mm x 205 mm
Capability	Hold up to 100m of tether (328ft)

■ CAMERA

Sensor	1/2.3" SONY CMOS
Pixels	12M
ISO Range	100-6400 In Auto / Manual
Lens	Field of View: 166°
	Aperture: f/2.5 Minimum Focusing Distance: 0.4 m
Shutter Speed	5~1/5000 Second
Burst Shooting	1 / 3 / 5 / 7 / 10 Frames
Exposure Comp.	2500K ~ 8000K - 3.0 EV ~ + 3.0 EV
Photo Resolution	4:3: 4000 x 3000
Photo Format	JPEG, DNG
Video Resolution	4K UHD: 25/30 fps
	1080P FHD: 25/30/50/60/100/120 fps 720P HD: 25/30/50/60/100/120/200/240 fps
Video Format	MPEG4- AVC/H.264, HEVC/H.265
Stabilization	EIS (Electronic Image Stabilization)
Colour Encoding	NTSC & PAL
Internal Storage	64 GB standard

■ CONTROLLER

Wireless	5GHz WiFi, 11a,n,ac
Battery Life	Up to 4 hours
Copy & Download	Format in FAT32 & EXFAT (Up to 128GB)

■ TETHER

Length	Standard 100 m (328ft) on Spool
Breaking Force	80 kgf

■ Manipulator

Paw Opening size	140mm
Gripping force	5kgf
Supply Voltage	9~12V
Maximum Current	3 A

※Product specifications & accessories are subject to change without notice.

Optional tools



Extend Your Reach
Increase Your Capability



World's 1st OMNI · 4K Underwater Robot



Professional underwater operations

Place Order Here



View Video Here

Shenzhen Qi Yuan Science and Technology Co., Ltd.
1/F, Phase 2, Galaxy Incubator
No.1 YaNan Road, Bantian Street
Longgang District, Shenzhen, Guangdong, China
Postal Code: 518131
Phone: +86-755-2266-2313





High Quality Increased Capacity, Longer Life

The V6s is powered by Premium Panasonic batteries that enable extended dive times of up to 6 hours and reduce down time with a safe and quick charge



60% INCREASE

Depth **100 m** | Speed **3.0 knots** | Temp. **-10~60°C** | Battery **Up To 6 Hrs**

Small In Size, Strong In Force Flexible In Operation

100N clamping force, with clamp lock function
100N towing force



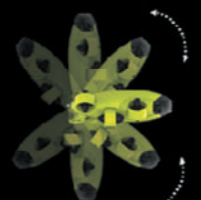
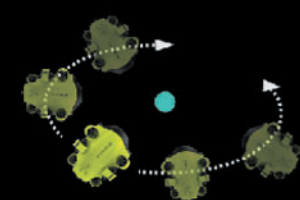
Superior Component Material
Selected For Durability

Freedom of Movement

■ Arc Rotation

■ Pitch & Lock

■ Lateral



90° Up

90° Down



VR Head Tracking (with VR Box)

FIFISH V6s integrates VR smart technology that fully immerses the user into the underwater world. With the Head Tracking feature, put yourself into the drone's first-person-view and control where you want to go simply by turning your head.



HEAD TRACKING



4000 Lumen LEDs · Capture all the beauty!

The FIFISH V6's powerful lumen LED headlights drastically enhance your underwater images and footage.



Superior Towing Capacity Redefines The Operational Concepts Of Compact ROVs

Drag, drop, tow, and salvage objects with neutrally buoyant robotic arm and cables



Less Torque & Best Viewable Zone, Stable Control & Precisely

Application scenario



Underwater Retrieval



Search & Rescue



Hydrographic Assessment



Survey



Treasure Hunt

FIFISH V6 PLUS Specifications



ROV

Dimensions	383 mm x 331 mm x 143 mm
Weight	5kg
Thrusters	6 Thrusters (FIFISH Q-Motor Technology)
Maneuverability	6 Degrees of Freedom
	Movement: left & right, up & down, forward & Rotation: 360° pitches, 360° rolls, 360° yaws
Posture Lock™	Lock the ± 0.1° pitch or roll angle, in any direction
Hovering	Keep the ROV suspending in ± 1 cm
Speed	Maximum 3.2 knots (1.65 m/s)
Depth Rating	150 m
Temperature Range	-10 °C ~ 60 °C (14 °F ~ 140 °F)
Battery	Dive Time: 4-8 Hours (Depending on usage scenario)
	Rated Capacity: 14,400mAh / 156Wh
	Charge Voltage: 12.9 V
	1- Hour Quick Charge
Attachment Tools	Supports 12V Power Supply

LED LIGHTS

Brightness	6000 Lumen LED
CCT	5500K (Correlated Color Temperature)
Beam Angle	120°
Levels	3 Brightness Levels

CHARGER

ROV	Input: 100-240V, 50/60 Hz, 3.0A MAX
	Output: 12.9V = 10A
RC	Input: 100-240V, 50/60Hz, 0.5A MAX
	Output: 5V = 3A

APP

Operating System	iOS 10.0.0 & above, Android 5.0 & Above
------------------	---

CAMERA

Sensor	1/2.3" SONY CMOS
Pixels	12MP
ISO Range	100-6400 In Auto / Manual
Lens	Field of View: 166°
	Aperture: f/2.5
	Minimum Focusing Distance: 0.4 m
Shutter Speed	5~1/5000 Second
Burst Shooting	1 / 3 / 5 / 7 / 10 Frames
White Balance	2500K ~ 8000K
Exposure Comp.	- 3.0 EV ~ + 3.0 EV
Photo Resolution	4:3: 4000 x 3000
Photo Format	JPEG, RAW (DNG)
	4K UHD: 25/30 fps
Video Resolution	1080P FHD: 25/30/50/60/100/120 fps
	720P HD: 25/30/50/60/100/120/200/240 fps
Additional Modes	Slow Motion Shooting
Video Format	MPEG4- AVC/H.264, HEVC/H.265
Stabilization	EIS (Electronic Image Stabilization)
Colour Encoding	NTSC & PAL
Storage	Pluggable, 64GB standard, support up to 512GB
Additional Features	Automatic Depth & Positioning
Display Features	Date, Time, Depth & Positioning
Video Output	Digital

CONTROLLER

Wireless	5GHz WiFi, 11a, n, ac
Battery Life	Up to 4 hours
SD Card Support	MicroSD Card FAT32 & EXFAT Format (to 128GB)
HDMI Output	QYSEA HDMI Output Box

TETHER

Length	200m standard
Breaking Force	100 kgf

FIFISH V6 Plus Web Page: <https://www.qysea.com>

※Product specifications & accessories are subject to change without notice.

Component Breakdown



ADVANCED UNDERWATER INSPECTION

Operate & Upgrade to the Industrial Level.



Industrial OMNI-4K Small-Sized Underwater Robot

FIFISH V6 PLUS

UNDERWATER ROBOT

FIFISH V6 Plus Domestic Line

Place Order Here

View Video Here



Shenzhen Qi Yuan Science and Technology Co., Ltd.

1/F, Phase 2, Galaxy Incubator
No.1 YaNan Road, Bantian Street
Longgang District, Shenzhen, Guangdong, China
Postal Code: 518131
Email: info@qysea.com
Phone: +86-755-2266-2313

※Please contact above for FIFISH repair.



Industrial OMNI-4K Small-Sized Underwater Robot FIFISH V6 Plus

Inheriting all the essential features of the world's first omni-directional 4K underwater drone, FIFISH V6 Plus also includes a new patented Q-Motor for greater power, speed and functions fit for the industrial level, as well as attachment tools for advanced underwater applications. V6 Plus brings possibility and reliability for all your advanced underwater missions!



Be Active Across the Underwater World.

FIFISH V6 Plus delivers the tools for high-level inspections (i.e. hulls, bridges, fish farms, hydroelectric power plants, sewage treatments, ports, etc.); Sea-floor mapping, search & rescues, and more. Eliminate the human dangers and difficulties of underwater operations, along with attachment tools for that enables advanced underwater work at the industrial level.

FIFISH V6 Plus Features

(Brand new functions of the V6 Plus indicated by the color code)

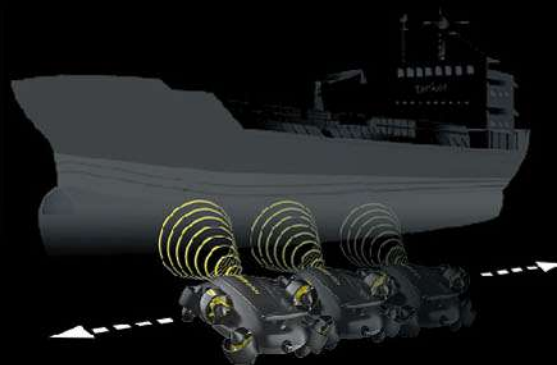


FIFISH V6 PLUS

<p>+ QYSEA Specialty Q-Motor Power System</p> <p>Max Speed 3.2 knots Life Cycle 600 Hours</p>	<p>+ 156Wh Battery Capacity</p> <p>Usage Time 4~8 Hours <small>※Varies on situation & environment</small></p>	<p>+ High Brightness LED</p> <p>6000 lm</p>	<p>Max. Depth 150 m</p> <p>Temp. Range -10~60°C</p>
--	---	---	---

+ Sonar Distance Lock System

The embedded sonar system features a distance-measuring function. In addition, DL (Distance Lock) enables the V6 plus to fix its height and speed, reducing the operational complexity and allowing the pilot to better focus on capturing and recording important images. This makes V6 Plus the ideal ROV for inspections of all kinds (i.e., large vessel, boat / yacht, bridge inspection, infrastructure, etc).



※ Range can be set for 50cm or more

+ SD Card Direct Transfer



Record your HD footage directly to the SD Card, and along with a quick release slot, save on downloading time.

+ Open Source

QYSEA Platform provides Open Source customizations (CMD/Communication Protocol), allowing users to re-design numerous elements suitable to their requirements (Windows/Linux-/Android/iOS).

Freedom of Movement

V6 Plus' s thrusters deliver you 6 degrees of freedom, allowing mobility in all directions as well as rotations in 360° rolls, pans & tilts. The Posture Lock™ secures the angle of your drone as you move in any direction.

VR Head Tracking

Integrating VR smart technology that fully immerses the user into the underwater world, the Head Tracking feature lets you yourself into the drone' s first-person-view and control where you want to go simply by turning your



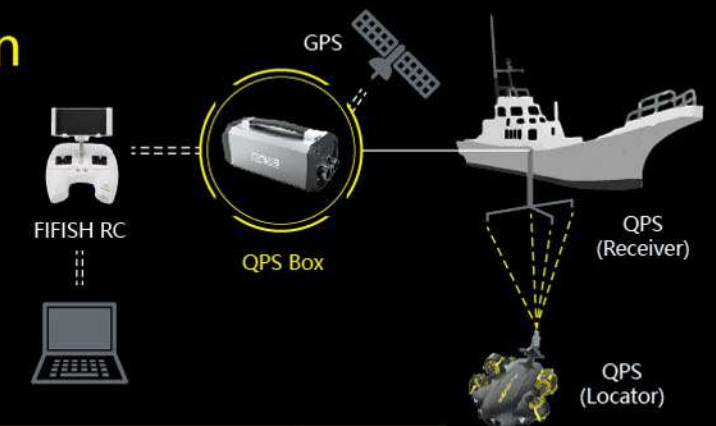
※ Separate smart phone/ device is required for this VR function.

Attachment Tools

Add-on options available to suit your requirements.

Quick Positioning System

FIFISH V6 Plus' s GPS kit and underwater Quick Positioning System (QPS) allows for both hardware and software upgrades. QPS assists the pilot with where the FIFISH V6 Plus, is below the surface, at all times and in real-time . (Suitable for ship inspections, as well as search and rescues, under depths of 100-300 feet).



High Precision Laser Scaler

Accurately measures the hole size on the Vessel hull, to identify and prevent further damage.



Water Sampler

Function: Water Sampling
Capacity: 50ml
Features: With Filter One-Way Valve



Gamma Detector

Function: Detects Gamma Radiation
Detection Range: 1uR / h to 5mR / h
(0.01uSv / h & 0.05mSv / h)
Dose Resolution: 1uR / h

FIFISH Auxiliary Camera

Specially Designed by QYSEA
Dual Camera Compatible
Connected with the FIFISH App



Automatic Spool

Manual: 100m
Automatic: 200m / 300m
(Extend-able & Retractable)



Thruster Protectors

Manipulator



- 12MP · 4K UHD Camera
- 166° FOV Wide-Angle Lens
- Dedicated App
- Image Enhancement System
- Live Broadcast · HDMI Output

※Product specifications & accessories are subject to change without notice.

FIFISH W6 Specifications



ROV

Dimensions	536mm x 416mm x 270mm
Weight	13kg
Thrusters	6 Thrusters (FIFISH Q-Motor Technology)
Maneuverability	6 Degrees of Freedom
	Movement: left & right, up & down, forward & backward Rotation: 360° pitches, 360° rolls, 360° yaws
Posture Lock™	Lock the ± 0.1° pitch or roll angle, in any direction
Hovering	Keep the ROV suspending in ± 1 cm
Speed	Maximum 4.0 knots (2.06 m/s)
Depth Rating	305m
Temperature Range	-10 °C ~ 60 °C (14 °F ~ 140 °F)
	Up to 6 Hours of Operation
Battery	Rated Output: 213Wh X 2
	Charge Voltage: 22.2V, 1.5 Hour Quick Charge
	Li-ion Panasonic 18650
Sensor	Accelerometer: 3D Tilt Compass
	Leakage Indicator, Temp./ Depth Sensor, MEMS Gyro System Voltage & Humidity Sensors, Baroreceptor
Sonar (Optional)	Operating Frequency: 650KHz, Range: 6.8 x 0.3-25m
	Probe Size: 29mm x 32mm
	Power: 12-24V, Max 0.5A, Data Communication: UART

LED LIGHTS

Brightness	10000 Lumen LED
CCT	5500 K (Correlated Color Temperature)
Beam Angle	120°
Levels	3 Brightness Levels

CHARGER

ROV	Input: 100-240 V, 50/60 Hz, 3A MAX
	Output: 25.2 V = 6A
RC	Input: 100-240 V, 50/60 Hz, 0.5A MAX
	Output: 5V = 3A

CAMERA

Sensor	1/2.3" SONY CMOS
Pixels	12M
ISO Range	100-6400 In Auto / Manual
	Field of View: 166° (Single Camera)
Lens	Aperture: f/2.5
	Minimum Focusing Distance: 0.4 m
Shutter Speed	5-1/5000 Second
Burst Shooting	1 / 3 / 5 / 7 / 10 Frames
White Balance	2500K ~ 8000K
Exposure Comp.	- 3.0 EV ~ + 3.0 EV
Photo Resolution	4:3: 4000 x 3000
Photo Format	JPEG, RAW (DNG)
Video Resolution	4K UHD: 25/30 fps
	1080P FHD: 25/30/50/60/100/120 fps
Video Format	720P HD: 25/30/50/60/100/120/200/240 fps
	MPEG4- AVC/H.264, HEVC/H.265
Stabilization	EIS (Electronic Image Stabilization)
Colour Encoding	NTSC & PAL
Internal Storage	128GB standard

CONTROLLER

Wireless	Wi-Fi supported
Battery Life	Up to 8 hours
SD Card Support	MicroSD Card FAT32 & EXFAT Format (to 128GB)

TETHER

Length	305m (~1000ft)
Breaking Force	100 kgf

APP

Operating System	iOS 10.0.0 & above, Android 5.0 & Above
------------------	---

*Open Source

QYSEA Platform provides Open Source customizations (CMD/Communication Protocol), allowing users to re-design numerous elements suitable to their requirements (Windows/Linux/Android/iOS).

FIFISH W6 Web Page: <https://www.qysea.com>

*Product specifications & accessories are subject to change without notice.

Component Breakdown



INDUSTRIAL-GRADE UNDERWATER ROV

Perform Advanced Underwater Work at an Industrial Level



Industrial OMNI · 4K Mid-Sized Underwater Robot

FIFISH W6

UNDERWATER ROBOT

FIFISH W6 Domestic Line

Place Order Here



View Video Here

Shenzhen Qi Yuan Science and Technology Co., Ltd.
1/F, Phase 2, Galaxy Incubator
No.1 YaNan Road, Bantian Street
Longgang District, Shenzhen, Guangdong, China
Postal Code: 518131
Phone: +86-755-2266-2313

Industrial OMNI · 4K Mid-Sized Underwater Robot

FIFISH W6

Inheriting all the essential features of the world's first omni-directional 4K underwater drone, FIFISH W6 also includes a new patented Q-Motor for greater power, speed and functions fit for the industrial level, as well as attachment tools for advanced underwater applications. W6 brings possibility and reliability for all your advanced underwater missions!

FIFISH W6 Features

(Brand new functions of the W6 indicated by the color code)



QYSEA Specialty Q-Motor Power System	Max Depth	Dual Camera	High Brightness LED	Industrial Attachments
Life Cycle 600 Hours	305 m	Rich Video Resolution 3D Mapping	10000 lm	Countless Applications High Performance
Max Speed 4 knots		* Special software is required.		

Comparison Table (Calculated independently based on maximum depth, operating time, mobility, camera function, and optional parts. Higher the recommendation is based on greater .) ★

	Ship Inspections, Photography & Repair	Infrastructure Inspection & Maintenance	Aquaculture Equipment Checks	Dams & Hydro-power	Water Tank Inspections	Sewer Inspections	Underwater Filming (4K)	Bridge/Pier Inspections	Search & Rescue	Research & Development	Diving & Fishing	Price
V6	★★★★	★★	★★★★	★★★	★★★★	★★★★	★★★★★	★★★★★	—	★★★★★	★★★★★	★★★★★
V6 PLUS	★★★★★	★★★★	★★★★	★★★★	★★★★	★★★★★	★★★	★★★★★	★★★★	★★★★	★★★★	★★★★
W6	★★★★	★★★★★	★★★★★	★★★★	★★★★★	★★★★★	★★★	★★★★	★★★★	★★★★	★★★	★★★

* (Please use the chart above for reference)

Quick Deployment

Distance Lock Sonar System (Optional Tool)

FIFISH W6's embedded sonar system features a distance-measuring function. In addition, DL (Distance Lock) enables the W6 to fix its height and speed, reducing the operational complexity and allowing the pilot to better focus on capturing and recording important images. This makes W6 the ideal ROV for inspections of all kinds (i.e., large vessel, boat / yacht, bridge inspection, infrastructure, etc).



* Range can be set for 50cm or more

Quick Positioning System (Optional Tool)

FIFISH W6's GPS kit and underwater Quick Positioning System (QPS) allows for both hardware and software upgrades. QPS assists the pilot with where the FIFISH W6, is below the surface, at all times and in real-time. (Suitable for ship inspections, as well as search and rescues, under depths of 100-300 feet).



Lasting Tether Automatic Reel

Manual: 100m
Automatic: 200m/ 300m
(Extend-able & Retractable)



Replaceable Battery

Developed to commercial & Industrial Standards



Inspect

Dual Camera

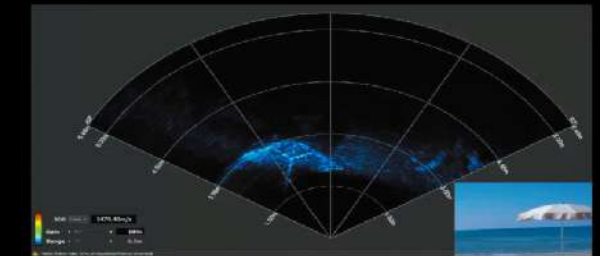
FIFISH W6's dual camera system provides a 60° vertical FOV, giving the pilot the entire picture of their environment. With this system, perform detailed inspections with great clarity and efficiently capture big data for underwater 3D mapping missions through our special software.



Dual Camera
Effective Pixels: 12MP
Video Resolution: 4K UHD Camera
Lens: Wide-Angle FOV
Vertical: 60°
Horizontal: 166°

Imaging Sonar (Optional Tool)

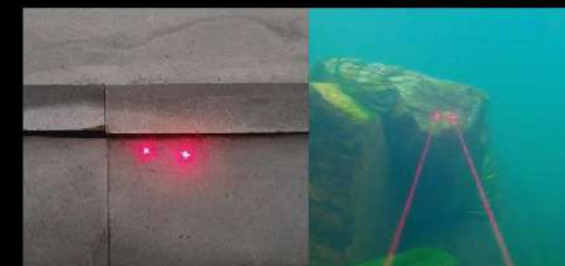
The W6 integrated Imaging Sonar system enhances your images, even in turbid underwater environments.



Measure

Laser Scaler (Optional Tool)

Accurately measure a hole size on the vessel hull, in order to effectively identify and prevent further damage.



Corrosion Gauge (Optional Tool)

Evaluate corrosion characteristics, through a layers of paint, with great accuracy and reliability.



Maintain

Underwater Cleaner (Optional Tool)

Specially designed by QYSEA for regular maintenance of the vessel hulls and to prevent barnacle growth. With its 360° omni-directional movement capabilities, the W6 cleans the hull with great detail, power and effectiveness.



Cleaner
of Brushes: 3
Size: 300mm in Diameter
Motor Speed: 300bps
Power: DC24V, Max 30A

Grabber ARM (Optional Tool)

Equipped with various types of grabbers, the W6 can adapt towards different types of terrains and environments.



Grabber ARM

