

**Enterprise**  
**SPACE NEEDED**  
**INSPECTION ROV**



AR Smart Measurement/Distance &  
Altitude Lock/Automated Inspections

**FIFISH** **VE PLUS**  
UNDERWATER ROBOT

Intelligent Underwater Inspections & Measurements Expert





# ADVANCED UNDERWATER INSPECTION EXPERT

Operate & Upgrade to the Industrial Level.

## OCEANUS V6 PLUS Smart And Easy To Operate

OCEANUS V6 PLUS is an expert in underwater advanced solution. Diving up to 150-meter, V6 Plus adopts the new patented Q-motor stabilization system and upgraded to the underwater intelligent system. More powerful and reliable in functions and simple in operation, OCEANUS V6 Plus creates a new way of underwater operations.



## OCEANUS V6 PLUS FEATURES

**150m**  
Max Depth

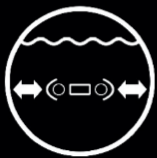
**3 Knots**  
Max Speed

**-10~60°C**  
Temp Range

**4 Hours**  
Depend On Different  
Working Mode

### ■ Sonar Array System-Distance And Altitude Lock

The distance lock and altitude lock sonar system measure the forward distance and the downward altitude in real time. Through distance lock and altitude lock, the difficulty of operation is reduced, and various inspections are more efficient and accurate.



Distance lock



Altitude Lock



Smart collision  
avoidance



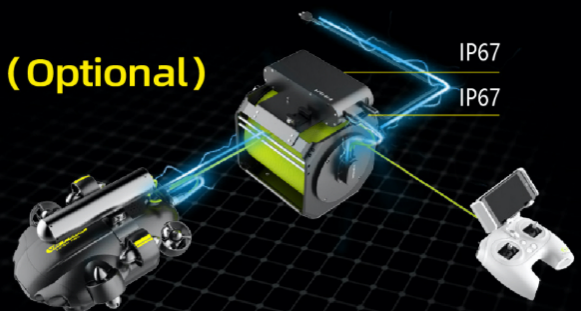
Terrain scan



### ■ Onshore Power Supply System - OPSS (Optional)

Patented six Q-motor power-saving design, miniaturized power supply system, Using while charging, super long battery life, fast replenishment, unlimited scenes, unlimited applications.

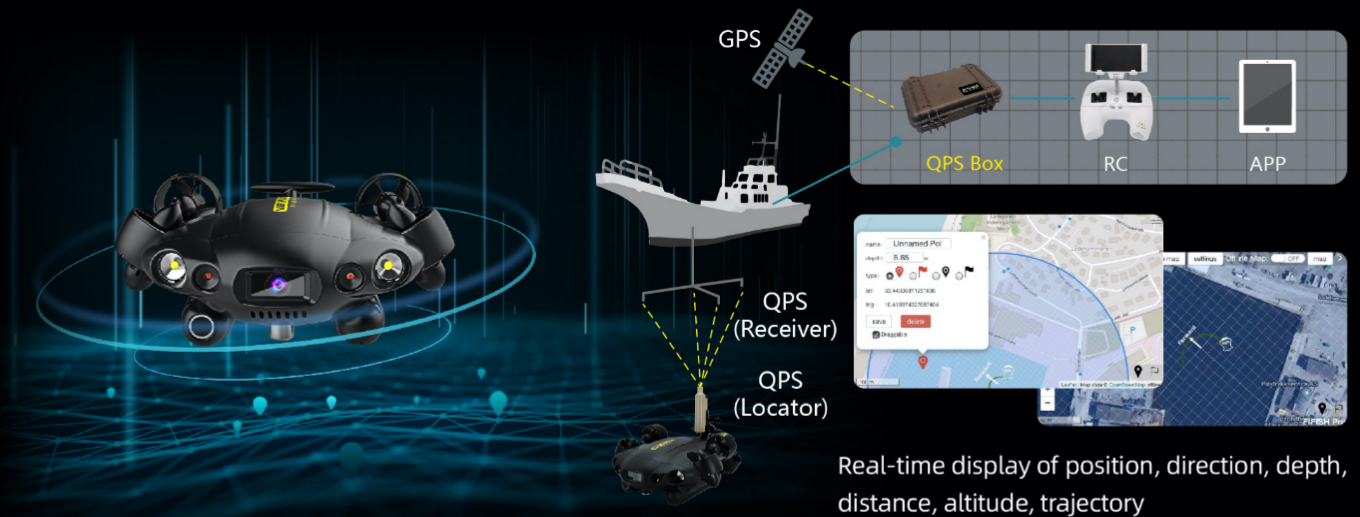
Safe and reliable, waterproof, anti leakage and anti electric shock design, excellent quality, worry-free operation.





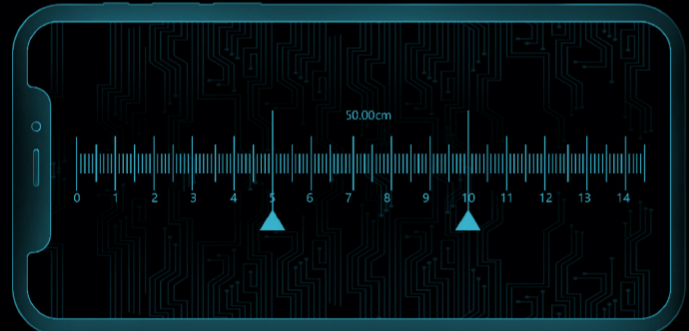
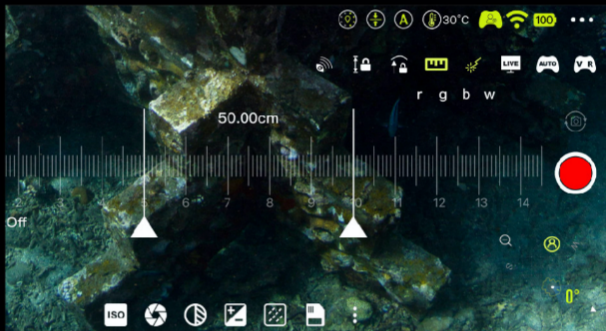
## ■ Underwater Quick Positioning System (Optional)

OCEANUS V6 PLUS underwater quick positioning system (U-QPS) assists the pilot with the real-time location.



## ■ AR Scaler (Intelligent Measurement)

Patent AR scaler's precision is up to 1cm. Self-adaptive measurement and visualized data are visible on APP. By moving the scaler and customizing color of scaler, with one simple click you can save the measuring result.



## ■ Laser Scaler

High brightness laser, traditional reliable measurement.



## ■ A New Generation Of Q Motor Power System, Fully Upgraded

Using Technology's "close loop enhanced stabilization algorithm", adaptively adjust the power curve according to the external interference environment, so that the ROV shooting image is more stable, just like an underwater gimbal. Install metal propeller, industrial quality and durable.



## 4K Low Noise Shooting, 6000 Lumens High Brightness

6000 lumens super light, equipped with 4K ultra-high-definition camera lens, dark underwater bright as day, presenting high-definition image content.



166° FOV Wide-Angle Lens



240 frames per second in slow motion



4K UHD Camera



DNG Format



12MP



6000 lumen LED



5500K Color Temperature



Aperture F/2.5

## VR Head Tracking

VR Head tracking intelligent technology is patent design which can let user fully immersive into underwater world. With the Head Tracking feature, put yourself into the drone's first-person-view and control where you want to go simply by turning your head.



## Easy To Follow, Free To Take

OCEANUS V6 PLUS has 6 degrees of freedom. Free like a fish, V6 Plus moves in all directions: 360° rotation, lateral and tilt. When moving in any direction, the posture lock can ensure the angle of the drone.



Omni-directional



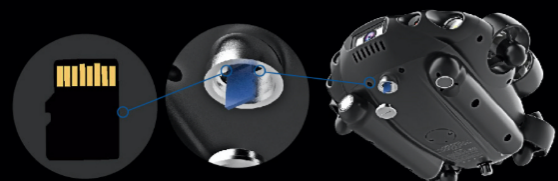
Posture lock



Depth lock

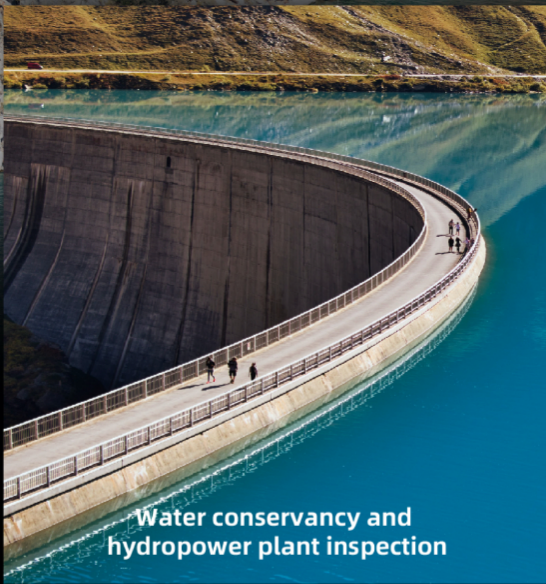
## Quickly Data Transfer And Store

The SD card is removable, and all data is instantly exported. The SD card comes standard with 128GB, and can support up to 512GB.



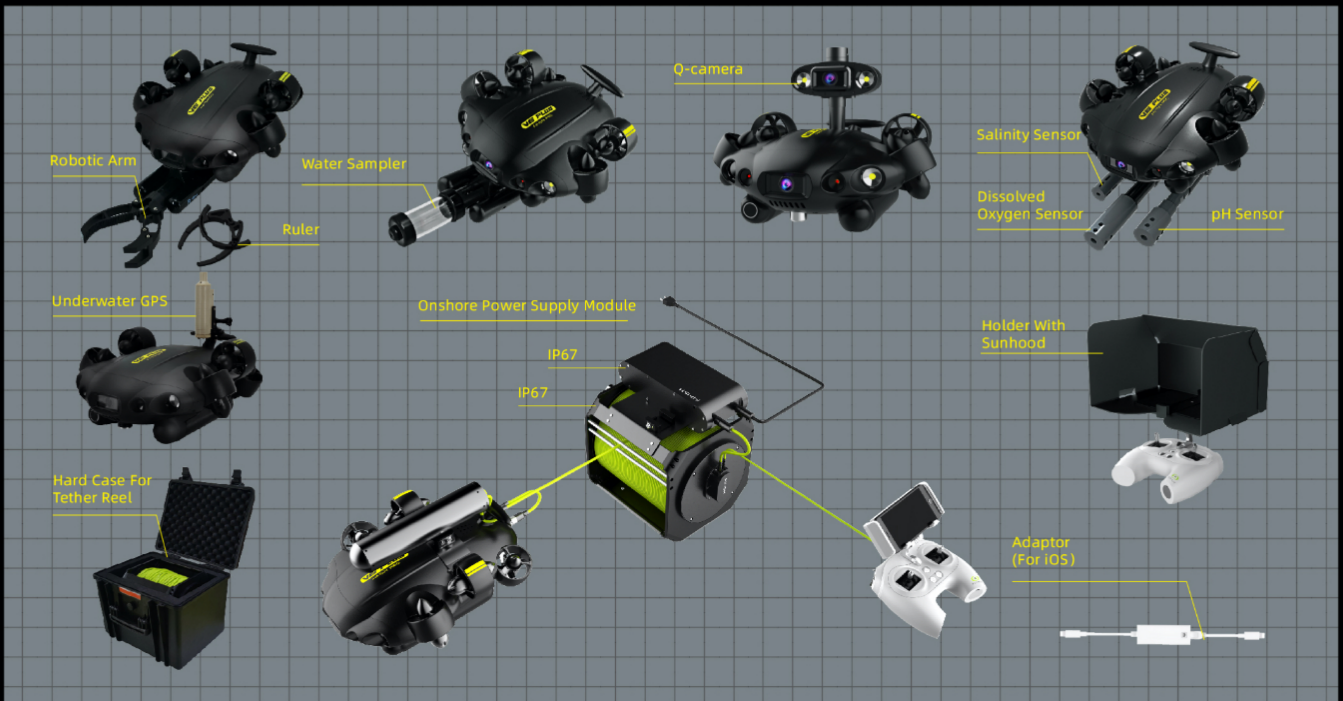
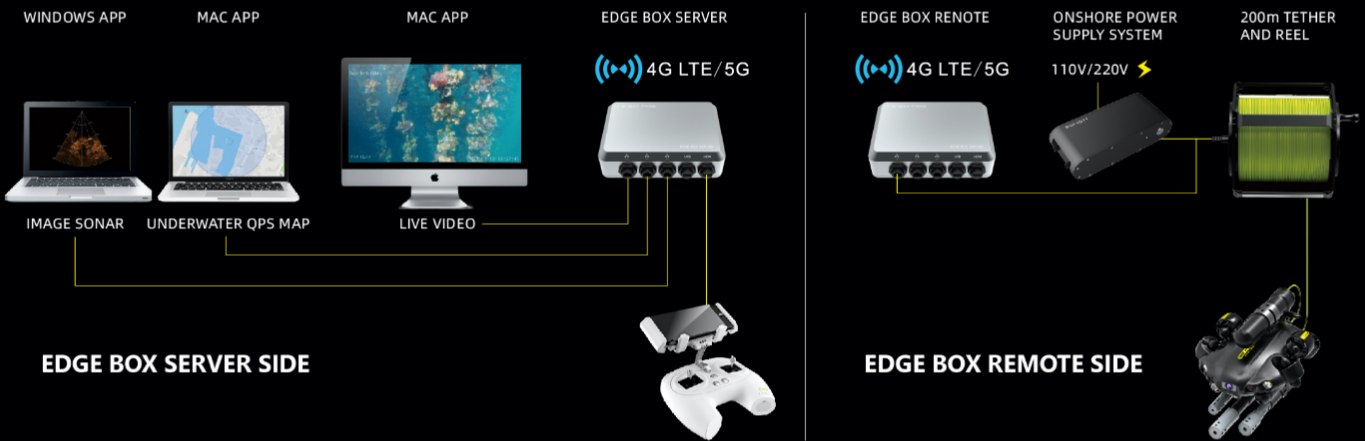


# Application Scenarios



# Accessories

## 4G LTE/5G Remote Control System





# FIFISH PRO V6 PLUS Specifications



## ROV

|                   |  |
|-------------------|--|
| Dimensions        | 383mm x 331mm x 158mm  |
| Weight            | 5kg  |
| Thrusters         | 6 Thrusters (FIFISH Q-Motor Technology)  |
| Maneuverability   | 6 Degrees of Freedom   |
|                   | Movement: left & right, up & down, forward & backward<br>Rotation: 360° pitches, 360° rolls, 360° yaws |
| Posture Lock™     | Lock the ± 0.1° pitch or roll angle, in any direction  |
| Hovering          | Keep the ROV suspending in ± 1 cm  |
| Speed             | Maximum 3 knots (1.5 m/s)  |
| Depth Rating      | 150M   |
| Temperature Range | -10 °C ~ 60 °C (14 °F ~ 140 °F)  |
| Battery           | Dive Time: 4-8 Hours (Depending on usage scenario)   |
|                   | Rated Capacity: 14,400mAh / 156Wh  |
|                   | 1- Hour Quick Charge   |
|                   | Charge Voltage: 12.6 V<br>Li-ion Panasonic 21700   |
| Sensor            | Accelerometer , Gyroscope , Electronic Compass   |
|                   | Temperature Transducer   |
|                   | Depth Transducer   |

## LED LIGHTS

|            |                                      |
|------------|--------------------------------------|
| Brightness | 6000 Lumen LED                       |
| CCT        | 5500K (Correlated Color Temperature) |
| Beam Angle | 120°                                 |
| Levels     | 2 Brightness Levels                  |

## CHARGER

|     |                                      |
|-----|--------------------------------------|
| ROV | Input: 100-240V, 50/60 Hz , 3.0A MAX |
|     | Output: 12.6V = 10A                  |
| RC  | Input: 100-240V, 50/60Hz , 0.5A MAX  |
|     | Output: 5V = 3A                      |

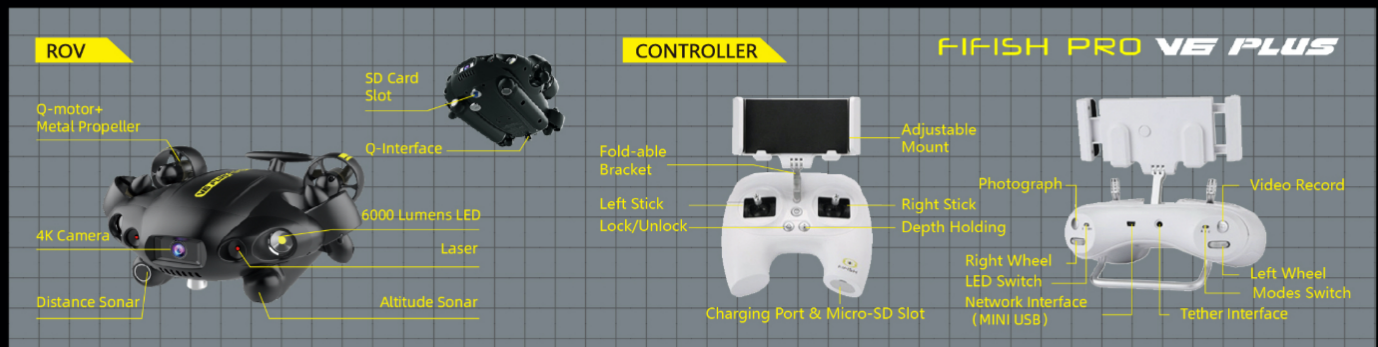
## DISTANCE LOCK, ALTITUDE LOCK SONAR SYSTEM

|                 |            |
|-----------------|------------|
| Detection range | 0.5 - 6.0m |
| Precision       | +/-5cm     |

FIFISH V6 Plus Web Page : <https://www.qysea.com>

※Product specifications & accessories are subject to change without notice.

## COMPONENT BREAKDOWN



## CAMERA

|                  |  |
|------------------|--|
| Sensor           | 1/2.3" SONY CMOS                               |
| Pixels           | 12MP   |
| ISO Range        | 100-6400 In Auto / Manual                      |
| Lens             | Field of View: 166°                            |
|                  | Aperture: f/2.5                                |
|                  | Minimum Focusing Distance: 0.4 m               |
| Shutter Speed    | 5~1/5000 Second                                |
| Burst Shooting   | 1 / 3 / 5 / 7 / 10 Frames                      |
| White Balance    | 2500K-8000K                                    |
| Exposure Comp.   | - 3.0 EV ~ + 3.0 EV                            |
| Photo Resolution | 4:3: 4000 x 3000                               |
| Photo Format     | JPEG, RAW (DNG)                                |
| Video Resolution | 4K UHD: 25/30 fps                              |
|                  | 1080P FHD: 25/30/50/60/100/120 fps             |
|                  | 720P HD: 25/30/50/60/100/120/200/240 fps       |
| Video Format     | MPEG4- AVC/H.264, HEVC/H.265                   |
| Stabilization    | EIS (Electronic Image Stabilization)           |
| Colour Encoding  | NTSC & PAL                                     |
| Storage          | Pluggable, 128GB standard, support up to 512GB |

## CONTROLLER

|                 |  |
|-----------------|--|
| Wireless        | 5GHz WIFI,11a,n,ac                           |
| Battery Life    | Up to 4 hours                                |
| SD Card Support | MicroSD Card FAT32 & EXFAT Format (to 128GB) |
| HDMI Output     | QYSEA HDMI Output Box                        |

## ROBOTIC ARM (optional)

|                 |       |
|-----------------|-------|
| Size            | 140mm |
| Grip            | 10kgf |
| Supply Voltage  | 9-12V |
| Maximum Current | 3A    |

## LASER RULER

|                 |               |
|-----------------|---------------|
| Laser Tube Type | Spot Laser    |
| Wavelength      | 650nm ( Red ) |
| Scale Length    | 12cm          |

## TETHER

|                 |                                      |
|-----------------|--------------------------------------|
| Length          | 200m standard ( 100m/300m optional ) |
| Breaking Force  | 100 kgf                              |
| Tether Diameter | 4.0mm                                |

Place Order Here



Facebook



Shenzhen Qi Yuan Science and Technology Co., Ltd.  
1/F, Phase 2, Galaxy Incubator  
No.1 YaNan Road, Bantian Street  
Longgang District, Shenzhen, Guangdong, China  
Postal Code: 518131  
Email: info@qysea.com  
Phone: +86-755-2266-2313  
※Please contact above for FIFISH repair.



**FIFISH**  
UNDERWATER ROBOT