

# Total Canine Care™



## CANINE BRUCELLA LPS

### ANTIBODY (C.Bru LPS-Ab)

### RAPID TEST KIT (1CT.)



**WHOLE BLOOD,  
SERUM,  
OR PLASMA**



**1 SELF-CONTAINED, READY-TO-USE TEST**

#### • Contents •

- 1X Test Cassette in Foil Pouches
- 1X Test Assay Buffer Dropper Tubes (40uL per drop)
- Disposable Transfer Pipettors (10uL per drop)
- Biohazard Collection Bag
- User Guide

#### • Complementary Items •

- 1X Syringes (25G)
- 1X Centrifuge Cups (2 mL)
- Elastic Tourniquet
- Disposable Gloves
- Antibiotic Ointment

#### • Manufactured By •

Hangzhou All Test Biotech Co., Ltd  
550 Yin Hai Street, Hangzhou Economic  
& Technologic Development Area  
Hangzhou, 310018, P.R China

#### • Distributed By •

MR Diagnostic Services LLC  
Address: 540 E. Shady Lane  
Neenah, WI 54956  
Email: support@K9P4go.com  
Website: www.caninep4.com

## • Intended Use •

Total Canine Care™ C. Bru-Antibody Rapid Test Cassette (Whole blood/serum/plasma) is a sandwich lateral flow immunochromatographic assay for the qualitative detection of canine brucella LPS antibody (C.Bru-LPS Ab) canines whole blood, serum, or plasma.

## • Test Principle •

The canine brucella LPS antibody (C.Bru-LPS Ab) Rapid Test Cassette is a sandwich lateral flow immunochromatographic assay. The test cassette has a testing window. The testing window has an invisible T (test) zone and C (control) zone. When sample is applied into the sample well on the cassette, the liquid will laterally flow on the surface of the test strip. If there is enough canine brucella LPS antibody in the sample, a visible T line will appear in the T zone. The C line should always appear after sample is applied, indicating a valid result. By this means, the cassette can accurately indicate the presence of canine brucella LPS antibody in the sample.



## • Index of Warning Symbols •



## • Precautions •

- For animal use only. Not for use in humans. Keep out of reach of children.
- This kit is designed for in vitro veterinary use only.
- Follow warning symbol recommendations.
- Handle all specimens as if they contain infectious agents. observe established precautions against microbiological hazards through testing and follow the standard procedures for proper disposal of specimens.
- Wear disposable gloves and eye protection when specimens are being tested.
- **DO NOT** reuse test kit components. Discard after use.
- **DO NOT** use after expiration date.
- **DO NOT** mix components from different lots and different products.
- **DO NOT** operate near heavy vibrations or on steep inclines.
- **DO NOT** operate in dusty conditions.
- **DO NOT** touch the sample deposit area of the test cassette.
- **DO NOT** dispose sharps in standard trash.

## • Recommended Materials •

- **Timer.** Proper procedure times needed for testing. See individual steps.
- **Centrifuge.** For collection of serum/plasma, centrifugation is required.

## • Limitation of Test •

- Serological screening test only. Not suitable for diagnosis of infectious diseases of animals. All results should be considered with other clinical information available from a veterinarian.

## • Directions for Use •

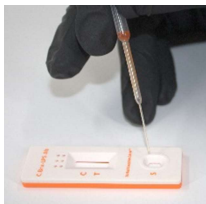
**Step 1** Prior to testing, determine whether whole blood, serum, or plasma testing is preferred by user. See list below. Only use clear, non-hemolyzed, non-clotted specimens. For best results, perform test within 30 minutes of collection.

- **WHOLE BLOOD** Testing: Proceed to **Step 3a**.
- **SERUM** Testing: Proceed to **Step 3b**.
- **PLASMA** Testing: Proceed to **Step 3c**.

**Step 2** Allow test cassette, specimen, and buffer to equilibrate to room temperature (15-30°C / 59-86°F) prior to testing.

### **Step 3a: WHOLE BLOOD Specimens Only •**

Within 1 minute after blood draw, transfer fresh whole blood into 2 mL collection cup. Next, use only the provided disposable transfer pipettor and transfer **1 drop** of liquid, un-clotted blood sample (approximately 10uL) into the sample well. Then, immediately **add 2 drops from white buffer tube** (approximately 80uL) into the specimen well (S). Finally, start the timer and wait approximately 10 minutes for test to complete.



• **SKIP to Step 6 if WHOLE BLOOD testing was performed •**

## • Directions for Use Continued •

### Step 3b: SERUM Specimens Only •

Transfer fresh whole blood into 2 mL centrifuge cup, filling at least  $\frac{3}{4}$  full. Wait 10 minutes for blood clotting to occur in the centrifuge cup. Place the sample into the centrifuge. Start the centrifuge and allow to spin for 10 minutes. (To avoid damaging your centrifuge, balance the centrifuge by placing an equal volume water sample across from your whole blood sample)



### Step 3c: PLASMA Specimens Only •

Transfer fresh whole blood into lithium heparin treated tubes only (not supplied. Fill only to indicated fill volume or fill line on tube). Mix Immediately (by inverting). Place the sample into the centrifuge soon after. No clot time needed. Start the centrifuge and allow to spin for 10 minutes. (To avoid damaging your centrifuge, balance the centrifuge by placing an equal volume water sample across from your whole blood sample)

### Step 4: After-Centrifuge Collection •

After 10 minutes of spinning, a clear separation on top of the cup should appear. Serum and/or plasma will appear straw yellow or light pink in color, liquid in density, and transparent. Use this portion for testing.



## • Directions for Use Continued •

### Step 5 •

Next, only use the provided disposable transfer pipettor and transfer **1 drop of serum/plasma sample** (approximately 10uL) into the sample well. Then, immediately **add 2 drops from white buffer tube** (approximately 80uL) into the specimen well (S). Finally, start the timer and wait approximately 10 minutes for test to complete.



### Step 6: Interpretation of Results •

Read the results at **10 minutes** after dispensing the specimen into the well. Do not interpret results after **15 minutes**.

#### • INVALID Test •



#### • POSITIVE Test •



#### • NEGATIVE Test •



**REMINDER:** All results should be considered with other clinical information available from a veterinarian.

## • Directions for Use Continued •

### Step 7: Disposal •

Dispose of used test cassettes and buffers in provided biohazard bags. Please consult local phone or internet directories for the correct information and disposal guidelines.



• **Step 8a:** Re-Order  
by Scanning the QR Code



• **Step 8b:** Re-Order  
by Downloading the App •



• **Step 8c:** OPTIONAL Re-Order by Visiting our Website •

**WWW.CANINEP4.COM**

## • Warranty Disclaimer •

For animals only. Not for use in humans. Keep out of reach of children. Intended for veterinary use only. Do not freeze. Store at room temperature. Keep out of direct or artificial sunlight. User (or Purchaser) is responsible to observe all applicable local, state, or federal law and bear all risks therefor. User shall dispose of all sharps in authorized waste containers, as identified by Users local trash removal services or health departments. Please consult local phone or internet directories for the correct information and disposal guidelines. Do not dispose sharps in standard trash.

MRDS, as Distributor, warrants the kit for its intended veterinary product use and will replace any defect product purchased by User upon MRDS' receipt of timely written notice by User. This shall be Users exclusive remedy and User shall not be entitled to additional or further compensation or cost.

MRDS is not responsible for pre-existing conditions (even if manifest during use of the products), abnormal response to product use not caused by defect product including but not limited to, aggression, anxiety, and destructive and/or compulsive behavior. MRDS is not responsible if death or euthanasia occurs in your pet because of illness, injury or because of behavior or emotional disorder, including stress induced ovulation losses.

Total Canine Care™ is a trademark of MR Diagnostic Services LLC. Any use or misrepresentation without the prior written permission is strictly prohibited.

**Copyright © 2023 by MR Diagnostic Services LLC**

All rights reserved. No part of this publication may be reproduced, distributed, or transmitted in any form by any means, including photocopying, recording, or other electronic or mechanical methods, without the prior written permission of MRDS. The information in this document is correct at the time of printing. However, MRDS reserves the right to make any necessary changes at any time without notice as our policy is one of continuous improvement.