

# ***CanineP4.Com™***

## **REUSABLE NATURAL TIE ARTIFICIAL INSEMINATION FOR DOGS USER GUIDE**

### **• Contents •**

- Reusable Natural Tie Artificial Insemination Kit for Dogs
- Saline Solution 0.9% (100mL)
- Lubrication Jelly Packets (5g)
- Disinfecting Wipes

### **• Complementary Items •**

- TotalCanineCare™  
Sperm Collection Kit (10ct.)

### **• Manufactured For •**

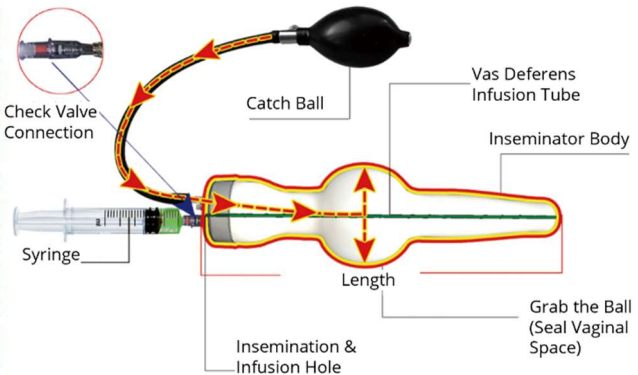
MR Diagnostic Services LLC  
Address: 540 E. Shady Lane  
Neenah, WI 54956  
Email: support@K9P4go.com  
Website: www.caninep4.com

## Intended Use •

CanineP4.com™ Reusable Natural Tie Artificial Insemination Kit For Dogs is intended to be an artificial insemination method designed to imitate a male canines natural tie with the female canine during breeding.

## • Principle •

By common definition, a natural tie occurs during physical breeding. The female canine will stand with her feet apart and her tail off to the side. The male canine will mount, and after breeding the male canine can remain attached to the female via enlargement of the bulbous glandis for <20 minutes; this is called the tie. The Canine Artificial Penis has the ability to mimic the canine bulbous glandis and inflate sealing the vaginal space.



## • Index of Warning Symbols •



## • Precautions •

- For animal use only. Not for use in humans. Keep out of reach of children.
- This product is designed for in vitro veterinary use only.
- Follow warning symbol recommendations.
- Handle all specimens interactions as if they contain infectious agents. observe established precautions against microbiological hazards through usage and follow standard procedures for proper disposal of specimens.
- Wear disposable gloves and eye protection when specimens are being used.
- This kit is designed only for use with all plastic semen-safe syringes (included with your semen collection kit),
- Ensure appropriate disinfecting after each use.
- **DO NOT** reuse single-use components. Discard components after use.
- **DO NOT** use single use components after expiration date.
- **DO NOT** use in non-sanitary conditions.
- **DO NOT** use in dusty conditions.
- **DO NOT** dispose any biological hazards in standard trash.

## • Recommended Materials •

- **TotalCanineCare™ Sperm Collection Kit (10ct.).** Highly recommend using for current and future collection of canine semen in conjunction with using the Reusable Natural Tie Artificial Insemination Kit For Dogs.

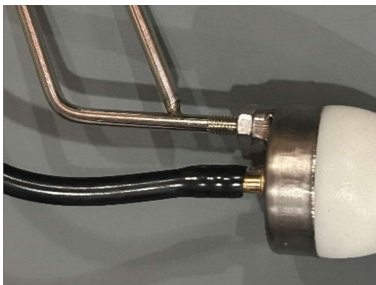
## • Directions for Use •

### Step 1: Initial Setup

- Remove the plastic covering from the device and discard.
- Attach the steel holding bar to the device securely by turning the bolt clockwise 2-4 rotations, then tighten the bolt locknut.



- Attach the black tubing securely over the bronze barbed fitting



## Directions for Use **Continued** •

### **Step 2: Initial Setup** **Continued** •

- Next, locate the small piece of plastic as pictured below. This is your check valve. It is optionally used when using the device and requires cleaning as well if used with semen.



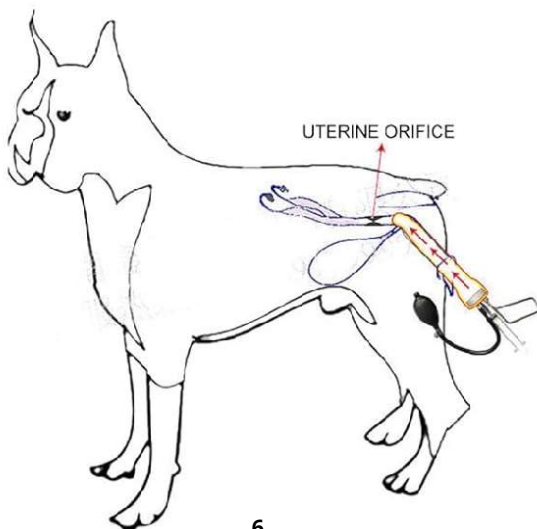
- Attach the check valve by inserting into the artificial insemination hole in the center.



## • Directions for Use **Continued** •

### **Step 3: Preparation and Cleaning** •

- First, ensure your device is thoroughly sanitized and cleansed from the last use to prevent introducing infection to the receiving animal.
- Next, take one of your lubricating packets and gently lube the exterior of the white silicone inseminator body.
- Prepare your semen and fill one of the provided all-plastic 20mL semen-safe syringes (do not use the rubber cleaning syringe) found in the provided sperm collection kit.
- Lastly, insert the device into the canine vagina as pictured below.

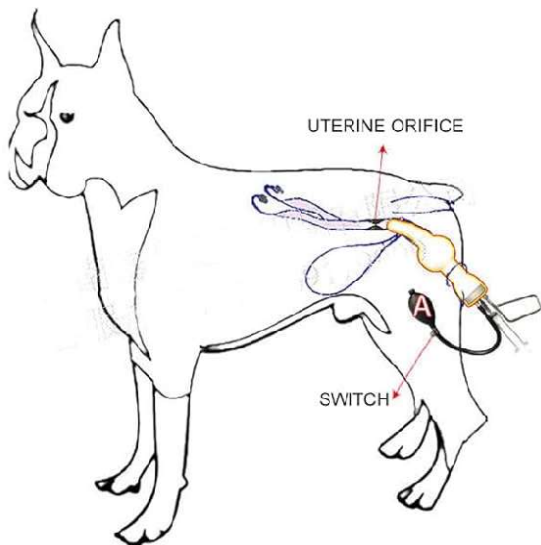


## • Directions for Use Continued •

### Step 4: Application •

- When the device is in position, pump the ball 1-3 times to inflate and imitate the tie. Do not overinflate. Ensure the lock on the black bulb is turned to the right, or it will deflate.

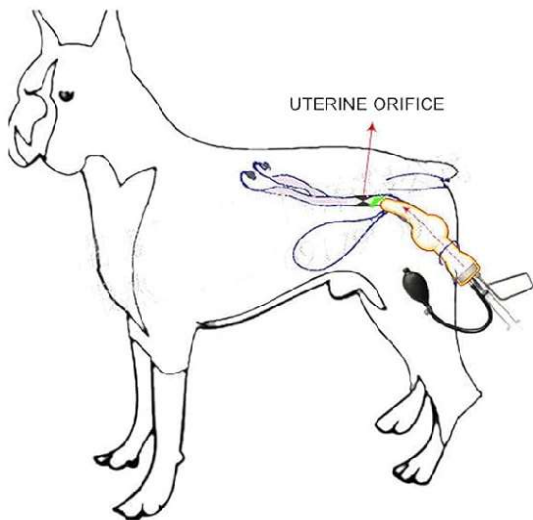
- Attach the check valve to the stainless-steel port on the inseminator body, then attach the syringe with semen. The device can also be used without the check valve and injected straight from the 20mL syringe.



## • Directions for Use **Continued** •

### **Step 5: Insert the Semen** •

- Slowly inject the semen into the animal and leave for 5-10 minutes for best sperm uptake and imitation of nature.

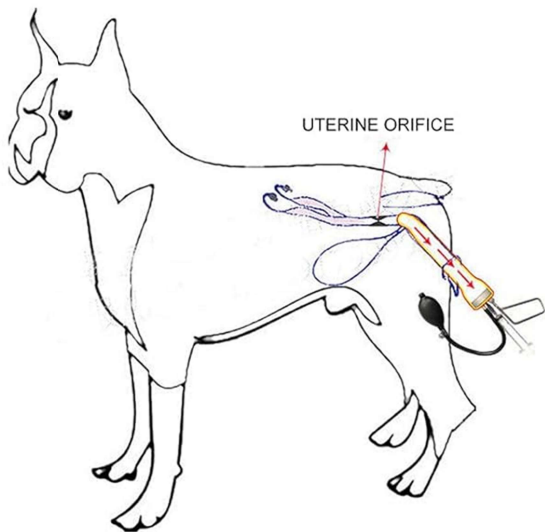




## • Directions for Use **Continued** •

### • **Step 6: Removing Device** •

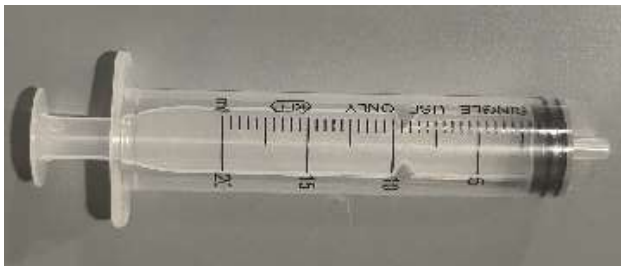
- After 5-10 minutes, Turn the valve on the black bulb counter-clockwise to release the air and remove the device. **DO NOT** remove the device without first releasing the air.



## • Directions for Use Continued •

### Step 7: Internal Cleaning •

- Once insemination is complete, use your reusable cleaning syringe (the one with black rubber seal) and flush the remainder of the semen out 1-2 times with the included saline.
- Any household 0.9% saline can be used for this step.
- Use the syringe shown in the picture repeatedly for flushing and cleaning only.



- Then, with your cleaning syringe, flush again with hot water or diluted isopropyl alcohol. Repeat as necessary.
- Isopropyl alcohol is recommended as a cleaning agent.
- Finally, flush with water 1-3 times for best results with cleaning syringe.

## • Directions for Use Continued •

### Step 8: External Cleaning and Storage •

- Use the include Lysol wipes to wipe all external surfaces. Alternatively, hot water and detergent can be used. Avoid using concentrated bleach or other harsh cleaner (i.e. undiluted isopropyl alcohol) on the external surfaces or steel.
- Allow to dry, then place in case. Avoid contaminating device after cleaning is complete.

### Step 9a: Re-Order by Scanning the QR Code



### • Step 9b: Re-Order by Downloading the App •



### • Step 9c: OPTIONAL Re-Order by Visiting our Website •

**WWW.CANINEP4.COM**

## • Warranty Disclaimer •

For animals only. Not for use in humans. Keep out of reach of children. Intended for veterinary use only. Do not freeze. Store at room temperature. Keep out of direct or artificial sunlight. User (or Purchaser) is responsible to observe all applicable local, state, or federal law and bear all risks therefor. User shall dispose of all sharps in authorized waste containers, as identified by Users local trash removal services or health departments. Please consult local phone or internet directories for the correct information and disposal guidelines. Do not dispose sharps in standard trash.

MRDS, as Distributor, warrants the kit for its intended veterinary product use and will replace any defect product purchased by User upon MRDS' receipt of timely written notice by User. This shall be Users exclusive remedy and User shall not be entitled to additional or further compensation or cost.

MRDS is not responsible for pre-existing conditions (even if manifest during use of the products), abnormal response to product use not caused by defect product including but not limited to, aggression, anxiety, and destructive and/or compulsive behavior. MRDS is not responsible if death or euthanasia occurs in your pet because of illness, injury or because of behavior or emotional disorder, including stress induced ovulation losses.

Total Canine Care™ is a trademark of MR Diagnostic Services LLC(MRDS). Any use or misrepresentation without the prior written permission is strictly prohibited.

**Copyright © 2024 by MR Diagnostic Services LLC**

All rights reserved. No part of this publication may be reproduced, distributed, or transmitted in any form by any means, including photocopying, recording, or other electronic or mechanical methods, without the prior written permission of MRDS. The information in this document is correct at the time of printing. However, MRDS reserves the right to make any necessary changes at any time without notice as our policy is one of continuous improvement.