

## Fairy House set up Instructions



Our fairy house sets up easily with its simple slot-together design.

It has 6 pieces that make up the fairy house, along with 2 ladders.

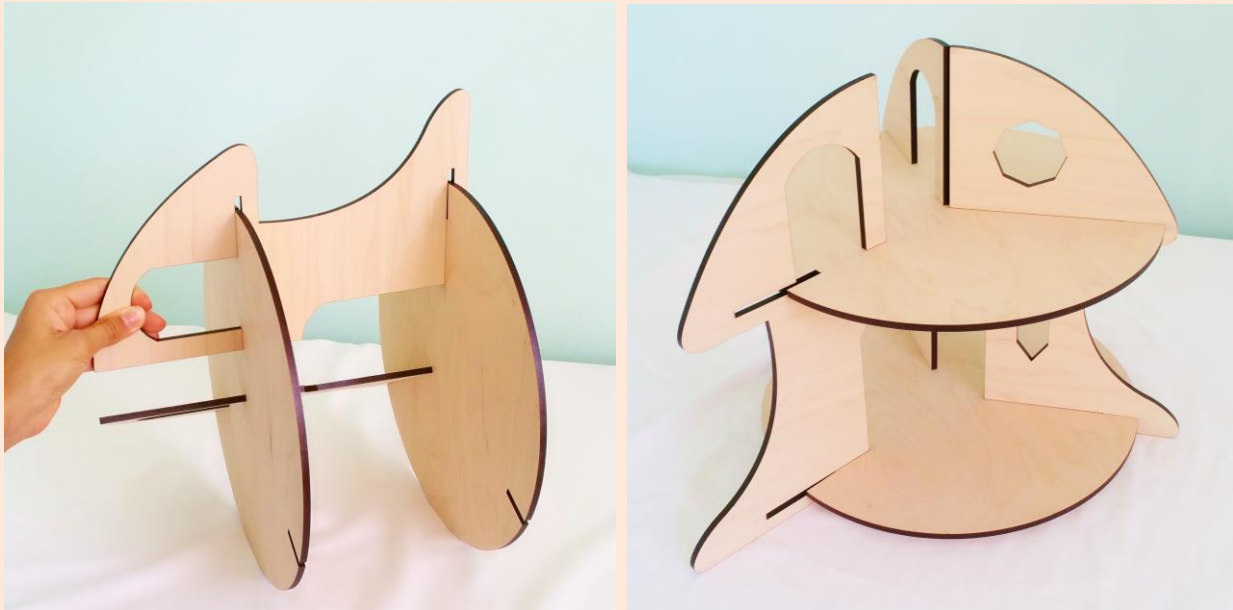


Start with one side and insert top and bottom floors into slots.



Next, insert 2<sup>nd</sup> side. There is no order in which the sides have to go in.

Slide the sides in evenly with top and bottom floors. Turning fairy house on its side can help pieces slide in smoothly.



Once all three sides are in, push them together to ensure they meet in the center as shown.

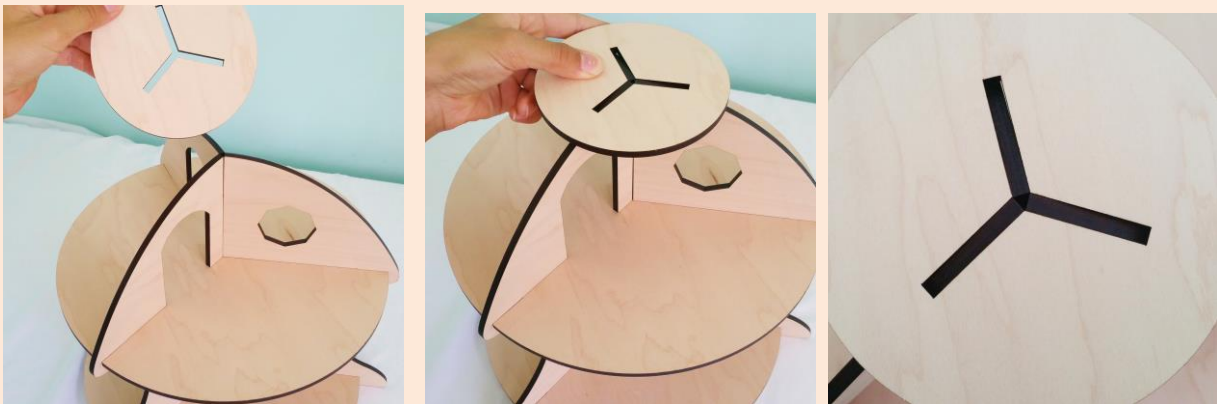


Stand fairy house upright to add top cap.

With all sides together the 3 walls should touch at the top as shown.



Take the top cap and press it down onto the top of the walls, locking them in place. Fit should be snug.



Your fairy house is now complete. If you do not intend to take your fairy house apart for storage, a small amount of glue can be added to the top cap when it is attached. This will insure that it stays firmly in place no matter where it is carried around for play.

