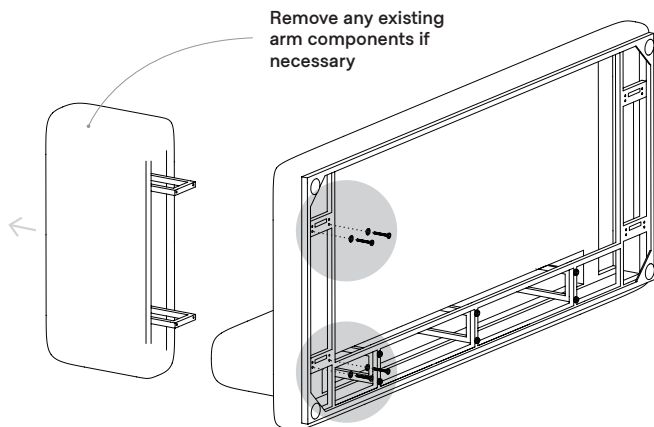




ROUNABOUT COLLECTION

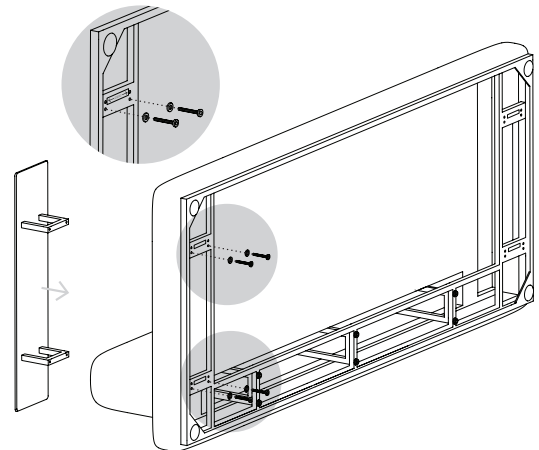
Side Table

- 1 Gently lay down the seating module on its side. If necessary, remove any existing Arm Component(s) by unfastening Hex Bolts from the Base's underside.

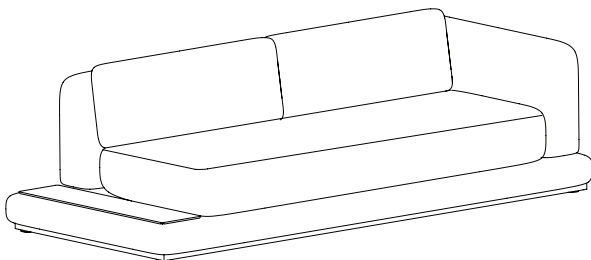


- 2 Insert the Side Table Surface into the Base and fasten with Hex Bolts on the Base's underside. Tighten all Hex Bolts completely.

4x 55mm Bolt, Washer



- 3 With help from another person, gently stand the assembled furniture upright. You're finished!



Components



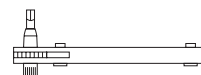
1x Side Table Surface



4x 55mm Hex Bolt



4x Washer



1x Hex Ratchet