

REMOTE MANAGED  
CONSOLE  
ACCESS SERVER



Manage this device with  
Digi Remote Manager



# DIGI CONNECT IT MINI

Secure, affordable, managed out-of-band access for isolated remote IT devices

The Digi Connect® IT Mini remote console access server ensures continuous network uptime to remote locations. It provides an always-on, out-of-band gateway for branch office routers in locations like retail stores, kiosks or other sites. Connect IT Mini enables backup connectivity to manage and correct issues with isolated, critical IT infrastructure.

For enterprises that need serial access for remote equipment monitoring, Digi Connect IT Mini offers a complete and secure cellular-based solution in the industry for less than the cost of an enterprise modem. Using Digi Remote Manager® (Digi RM) and Connect IT Mini, network administrators can identify and remediate issues at the network edge before they can become a work order or cause a network interruption.

Digi TrustFence®, a suite of hardware and security features, ensures the integrity of Digi Connect IT Mini and safeguards out-of-band access to isolated infrastructure. To secure your connections, built-in features include authenticated boot, encrypted data storage, access-controlled ports, and secure software updates.

Digi RM and Digi Connect IT Mini provide easy setup, configuration, security management and serial port monitoring of large installations of remote Digi devices. Digi RM offers web-based device management for any Digi cellular routers, gateways or third-party devices and offers single-pane-of-glass view to monitor and access Digi Connect IT console access servers and the critical IT assets to which they are connected.

## FEATURES AND BENEFITS

- LTE Cat-M for maximum coverage
- Out-of-band (OOB) management and recovery using secure SMS
- Advanced modem management software
- Early detection and remediation of issues
- Operates independently from in-band network
- Identify any unusual activity or attempts to access the remote device
- Send automated alerts via email or SMS to notify of any network issues
- Digi Remote Manager platform for easy setup, mass configuration and management

## RELATED PRODUCTS



Digi Connect® IT 4



Digi Connect® IT 16/48



Digi 6310-DX

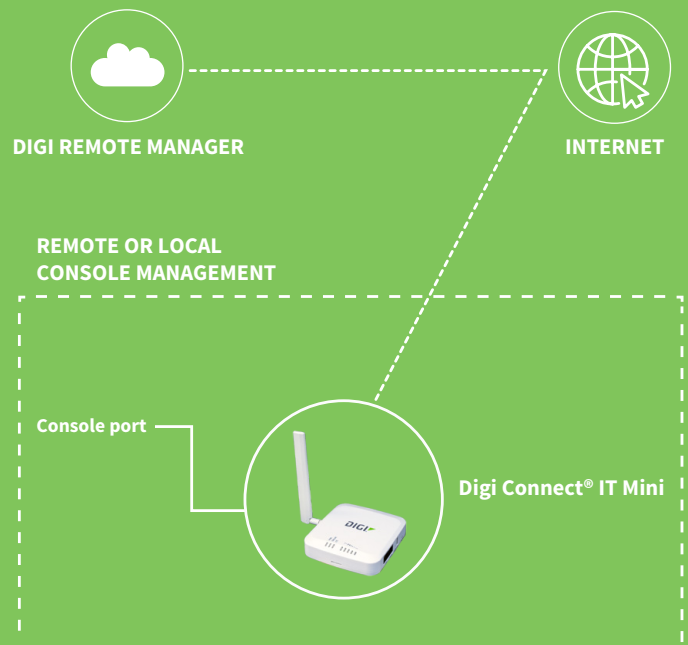


Digi ConnectPort® TS



Digi Remote Manager®

## APPLICATION EXAMPLE



SPECIFICATIONS	DIGI CONNECT® IT MINI
<b>CELLULAR</b>	LTE Cat-M/NB-IoT/2G; LTE bands B1, B2, B3, B4, B5, B8, B12, B13, B18, B19, B20, B26, B28; 2G bands: B2, B3, B5, B8
<b>MODULE SUPPORT</b>	Global LTE Cat-M/NB-IoT
<b>SOFTWARE AND MANAGEMENT</b>	
<b>REMOTE MANAGEMENT</b>	Digi Remote Manager® (cloud-based)
<b>LOCAL MANAGEMENT</b>	WebUI (HTTP/HTTPS); CLI (console, SSH)
<b>NETWORK</b>	
<b>ETHERNET</b>	RJ-45; 10/100 Mbps (auto-sensing)
<b>CONNECTIONS</b>	
<b>SERIAL/USB</b>	Serial port RJ-45 RS-232 and USB 2.0 host port
<b>PHYSICAL</b>	
<b>DIMENSIONS (L x W x H)</b>	127 mm x 127 mm x 25 mm (5.0 in x 5.0 in x 1.0 in)
<b>WEIGHT</b>	0.37 kg (13 oz)
<b>STATUS LEDS</b>	Power, online, LTE, (5) signal strength
<b>POWER REQUIREMENTS</b>	
<b>POWER INPUT</b>	5.0 VDC, 1 A; 100-240 VAC
<b>ENVIRONMENTAL</b>	
<b>OPERATING TEMPERATURE</b>	0° C to 40° C (32° F to 104° F)
<b>RELATIVE HUMIDITY</b>	5% to 95% (non-condensing)
<b>APPROVALS</b>	
<b>SAFETY, ENVIROMENTAL, EMISSIONS/IMMUNITY</b>	FCC Part 15, Subpart B, Class A; CE, RCM; CAN ICES03(B)/NMB-3(B)
<b>WARRANTY</b>	
<b>PRODUCT WARRANTY</b>	3-year

ENTERPRISE SOFTWARE	DESCRIPTION
<b>PROTOCOL SUPPORT</b>	HTTP, HTTPS, FTP, SFTP, SSL, SNMP v3, SSH and CLI for web management; remote management via Digi Remote Manager®; SMS management
<b>SECURITY/VPN</b>	IP filtering, stateful inspection firewall with scripting, address and port translation; VPN: IPSec with IKEv1, IKEv2, NAT Traversal; SSL, SSLv2, SSLv3; IPSec & OpenVPN tunnels; Cryptology: SHA-1, SHA-2, MD5, RSA; Encryption: DES, 3DES and AES up to 256-bit (CBC mode for IPSec); Authentication: RADIUS, TACACS+, MAC address filtering; VLAN support
<b>ROUTING/FAILOVER</b>	IP pass-through; NAT, NAPT with IP port forwarding; Ethernet bridging; GRE; multicast routing; Routing protocols: PPP, OSPF, BGP, RSTP (Rapid Spanning Tree Protocol); IP failover: VRRP, automatic failover/failback to secondary connection
<b>OTHER PROTOCOLS</b>	QoS via TOS/DSCP/WRED; UDP/TCP to serial

## PRODUCT IMAGES

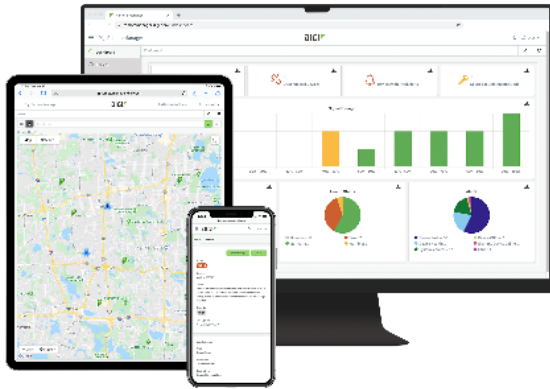
DIGI CONNECT® IT MINI LEFT



DIGI CONNECT® IT MINI RIGHT



# DIGI REMOTE MANAGER®



Digi Remote Manager is the technology platform that brings networks to the next level, allowing networks — and the people who manage them — to work smarter. With Digi Remote Manager you can transform a multitude of dispersed IoT devices into a dynamic, intelligent network. Now you can easily deploy, monitor and diagnose thousands of mission-critical devices from a single point of command — on your desktop, tablet or phone. All the while, its software-defined security diligently safeguards your entire Digi ecosystem.

Learn more at [www.digi.com/digi-remote-manager](http://www.digi.com/digi-remote-manager)

## CAPABILITIES

- Activate, monitor and diagnose your mission-critical devices from a single point of command and control — on your desktop or mobile app
- Schedule key operations — including firmware updates and file management — on a single device or on a group of devices, keeping your network functionality up-to-date and maintaining compliance standards
- Manage edge devices out-of-band via console terminal access
- Keep tabs on device health and connectivity across device deployments of any size
- Create detailed reports and enable real-time alerts for specified conditions
- Integrate device data through open APIs to gain deeper insights and control with third-party applications
- Report and alert on performance statistics, including connection history, signal quality, latency, data usage and packet loss

## INFRASTRUCTURE

- Hosted in a commercial-grade cloud server environment that meets SOC 1®, SOC 2® and SOC 3® standards
- Superior availability, operating to 99.9% or greater
- Open APIs available to support application development

## SECURITY

- More than 175 security controls in place to protect your data
- Member of the Center for Internet Security® (CIS®)
- Enables compliance with security frameworks like ISO27002, HIPAA, NIST and more
- Earned Skyhigh's CloudTrust™ Program highest rating of Enterprise-Ready

PART NUMBERS	DIGI CONNECT® IT MINI
IT01-M100-GLB	Digi Connect IT Mini remote console access server

PART NUMBERS	ACCESSORIES
170012	(1) Cellular antenna (black) for use with Digi products that have LTE modems - replacement

PART NUMBERS	DIGI REMOTE MANAGER®
DIGI-RM-STD-1YR	Digi Remote Manager Standard - 1-year subscription
DIGI-RM-PRM-1YR	Digi Remote Manager Premier - 1-year subscription
DIGI-RM-PRM-3YR	Digi Remote Manager Premier - 3-year subscription
DIGI-RM-PRM-5YR	Digi Remote Manager Premier - 5-year subscription

**DIGI SERVICE AND SUPPORT** / You can purchase with confidence knowing that Digi is always available to serve you with expert technical support and our industry leading warranty. For detailed information visit [www.digi.com/support](http://www.digi.com/support).

© 1996-2020 Digi International Inc. All rights reserved.  
All trademarks are the property of their respective owners.

**DIGI INTERNATIONAL WORLDWIDE HQ**  
877-912-3444 / 952-912-3444 / [www.digi.com](http://www.digi.com)

**DIGI INTERNATIONAL JAPAN**  
+81-3-5428-0261 / [www.digi-intl.co.jp](http://www.digi-intl.co.jp)

**DIGI INTERNATIONAL GERMANY**  
+49-89-540-428-0

**DIGI INTERNATIONAL SINGAPORE**  
+65-6213-5380

**DIGI INTERNATIONAL CHINA**  
+86-21-50492199 / [www.digi.com.cn](http://www.digi.com.cn)

91004398  
C2/920

