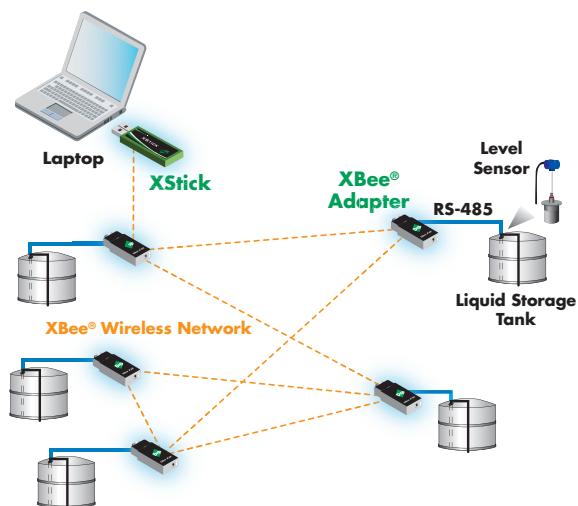


XStick

USB to XBee Wireless PAN Adapter for Laptops & PCs

The XStick provides local connectivity to a wireless XBee network from a laptop or PC, enabling local commissioning of the XBee network and its devices.



Features/Benefits

- **USB to Wireless Personal Area Network adapter (WPAN)**
- **Provides local connectivity for network commissioning**
- **2 XStick versions available**
 - **XBee ZB (ZigBee mesh)**
 - **XBee 802.15.4 (multipoint)**
- **Configured as a coordinator in a mesh network**
- **USB powered**
- **LEDs for power status and network association**

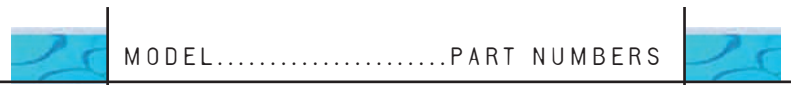
Overview

The XStick is a USB peripheral adapter that provides short-range wireless connectivity to a low-power mesh or multipoint network in a familiar, easy-to-carry form factor. Housing Digi's XBee module, this off-the-shelf adapter provides instant wireless connectivity from a laptop or PC, allowing network configuration, diagnostics or device monitoring to be conducted locally.

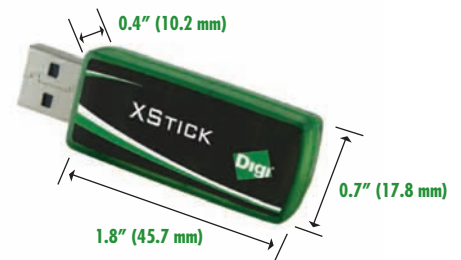
Two versions of the XStick are available - the XStick ZB (ZigBee mesh version) and the XStick 802.15.4 (multipoint version). The XStick ZB is configured to behave as a coordinator within a mesh topology.

The XStick can be plugged directly into the USB port of a laptop or PC or connected using an extension cable (must be three meters or less in length). The XStick is USB powered and does not require batteries or a power adapter.

Platform	XStick ZB	XStick 802.15.4
Performance		
Indoor/Urban Range	66 ft (20 m)	49 ft (15 m)
Outdoor/RF Line-of-Sight Range	164 ft (50 m)	131 ft (40 m)
Transmit Power Output (Nominal 25° C)	2.8 mW (4.5 dBm)	1 mW (0 dBm)
RF Data Rate	250 Kbps	250 Kbps
Serial Interface Data Rate (Software Selectable)	1200-115.2K	1200-115.2K
Receiver Sensitivity	-90 dBm	-90 dBm
Power Requirements		
Supply Voltage	5V from USB port of PC	5V from USB port of PC
Operating Current (Transmit)	51 mA	64 mA
Operating Current (Receive)	47 mA	64 mA
Power-Down Current	XStick should not be put into sleep mode	XStick should not be put into sleep mode
General		
Operating Frequency Band	2.4 GHz ISM	2.4 GHz ISM
Dimensions (L x W x H)	1.8 in x 0.7 in x 0.4 in (45.7 mm x 17.8 mm x 10.2 mm)	1.8 in x 0.7 in x 0.4 in (45.7 mm x 17.8 mm x 10.2 mm)
Operating Temperature	-40° C to +85° C	-40° C to +85° C
Connector	USB Type A	USB Type A
Antenna Options	Internal only	Internal only
Networking & Security		
Supported Network Topologies	Point-to-Point, Point-to-Multipoint, Peer-to-Peer, ZigBee/Mesh	Point-to-Point, Point-to-Multipoint, Peer-to-Peer
Number of Channels (Software Selectable)	16	16
Addressing Options	PAN, channel, address	PAN, channel, address
Agency Approvals		
United States (FCC Part 15.247)	MCQ-XSTICK2	MCQ-XSTICK1 (Pending)
Industry Canada (IC)	1846A-XSTICK2	1846A-XSTICK1 (Pending)
Europe	ETSI	ETSI (Pending)



Model	
XStick ZB	XU-Z11
XStick 802.15.4	XU-A11



DIGI SERVICE AND SUPPORT - You can purchase with confidence knowing that Digi is here to support you with expert technical support and a strong five-year warranty. www.digi.com/support

**WHEN
RELIABILITY
MATTERS™**

Digi International

11001 Bren Road E.
Minnetonka, MN 55343
U.S.A.
PH: 877-912-3444
952-912-3444
FX: 952-912-4952
email: info@digi.com

**Digi International
France**

31 rue des Poissonniers
92200 Neuilly sur Seine
PH: +33-1-55-61-98-98
FX: +33-1-55-61-98-99
www.digi.fr

**Digi International
KK**

NES Building South 8F
22-14 Sakuragaoka-cho,
Shibuya-ku
Tokyo 150-0031, Japan
PH: +81-3-5428-0261
FX: +81-3-5428-0262
www.digi-intl.co.jp

**Digi International
(HK) Limited**

Unit 3206 – 08A, 32/F,
AIA Tower
183 Electric Road,
North Point, Hong Kong
PH: +852-2833-1008
FX: +852-2572-9989
www.digi.cn

Digi International, the leader in device networking for business, develops reliable products and technologies to connect and securely manage local or remote electronic devices over the network or via the web. With over 20 million ports shipped worldwide since 1985, Digi offers the highest levels of performance, flexibility and quality.

www.digi.com

© 2008 Digi International Inc.

All rights reserved. Digi, Digi International, the Digi logo, the When Reliability Matters logo, and XBee are trademarks or registered trademarks of Digi International Inc. in the United States and other countries worldwide. All other trademarks are the property of their respective owners.

**91001463
A1/808**

