

S66

SPECIFICATION SHEET

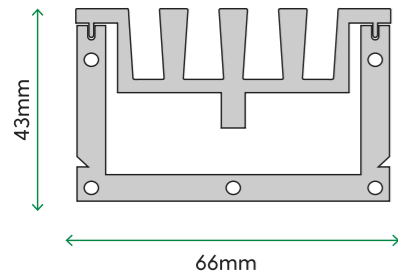
Version: 1



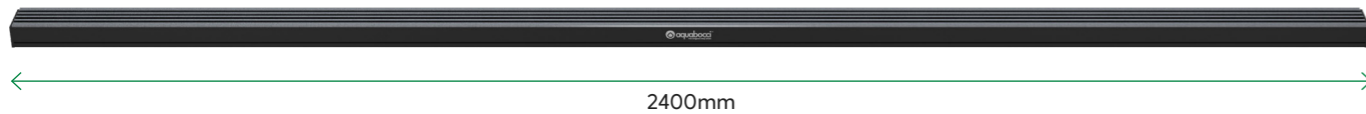
S66

The S66 drain has a modern and sleek design that fits into any project, large or small. The slimline profile is discreet and the 4 custom colours enable you to contrast or blend in with your design. The versatility of the S66 is limitless, there isn't an application it can not fit into. The Aquabocci spigot can be located anywhere along the channel, making it the most versatile drainage system on the market.

Profile



Lengths



Performance and finish

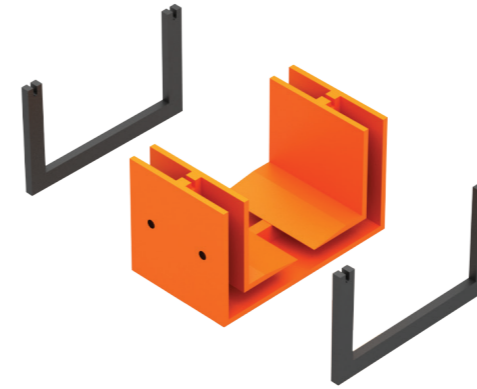
LOCATIONS	Wet rooms, balconies, swimming pools and courtyards
FLOW RATES	90 litres per minute
SLIP RATING	Optional Aquabocci WunderGrip (CSIRO R-13) / Non Slip finish available on all Aquabocci products
ANTI CORROSION	Guaranteed not to rust, corrode or tea stain around salt water or chlorine
HEELGUARD SAFE?	Yes
FUNCTION	Can be cut to any length
AQUABOCCI CUSTOM	4 colours available

System fittings

Aquabocci accessories are as durable as our drainage systems themselves. Corner pieces, end caps and connectors have EPDM rubber seals which screw into place for fast and easy installation.

Connector

With EPDM seals and screws

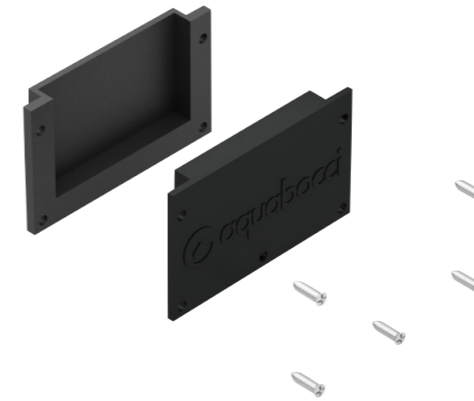


Corner

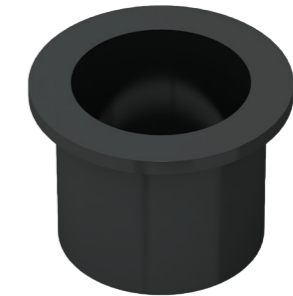


End Cap

With EPDM seals and screws



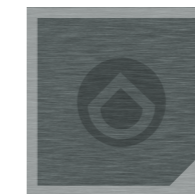
Spigot



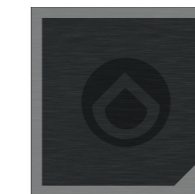
Colours



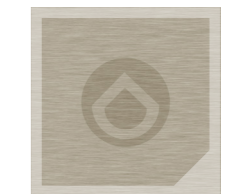
GT Silver



Titanium



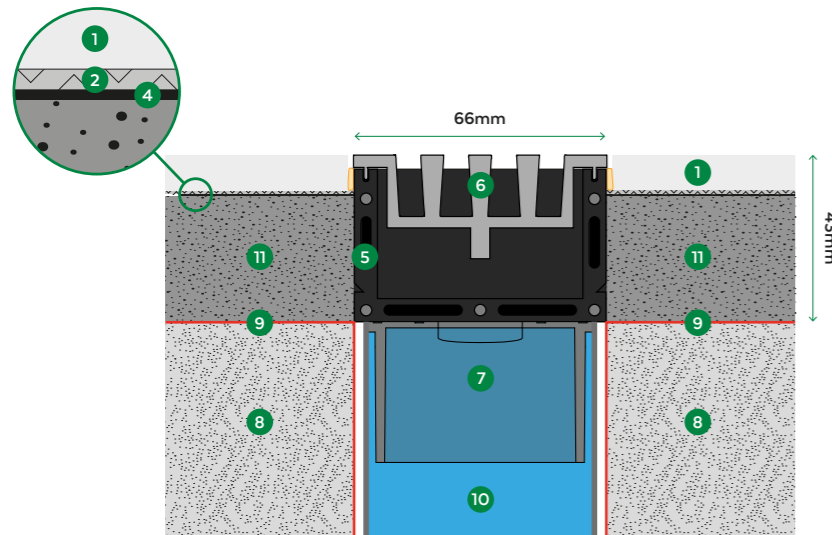
Black



Champagne

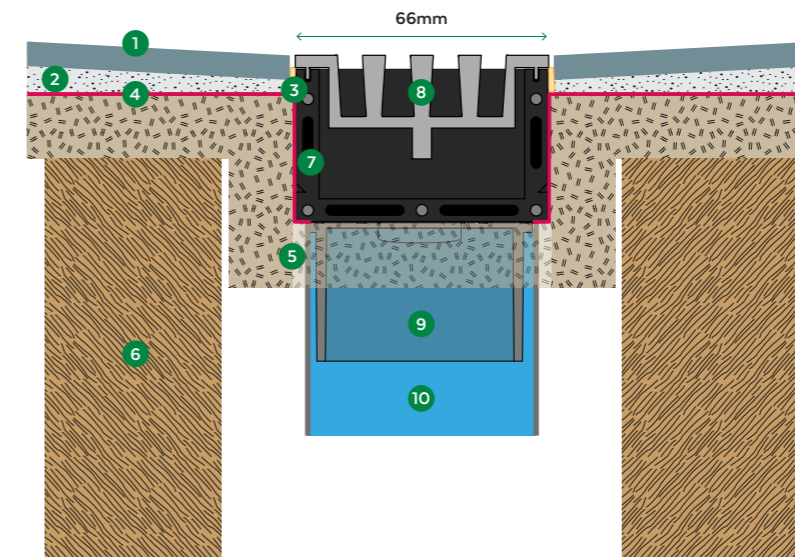
S66 INSTALLATION GUIDE

Slab Installation



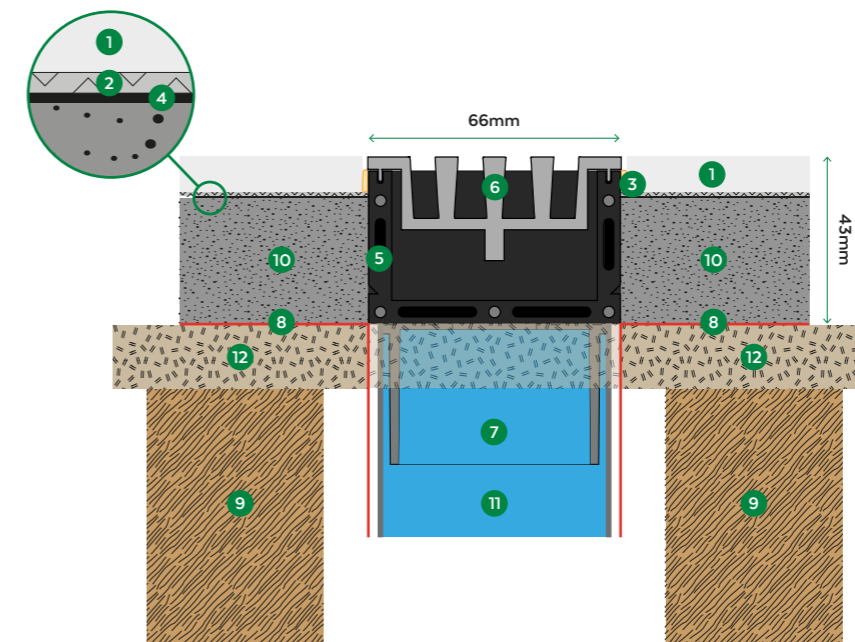
- 1 Tile
- 2 Tile adhesive
- 3 Silicon joint
- 4 Waterproof tape (Optional)
- 5 S66 extrusion channel
- 6 S66 removable grate
- 7 Spigot 50mm
- 8 Concrete slab or timber
- 9 Waterproof membrane
- 10 Pipe 50mm, 80mm or 100mm
- 11 Screed

Timber Installation without Mortar Screed



- 1 Tile
- 2 C2 Tile adhesive
- 3 Silicon joint
- 4 Waterproof membrane
- 5 Plywood supports plastic channel
- 6 Timber joist
- 7 S66 extrusion channel
- 8 S66 removable grate
- 9 Spigot 50mm
- 10 Pipe 50mm, 80mm or 100mm

Timber Installation with Mortar Screed



- 1 Tile
- 2 Tile adhesive
- 3 Silicon joint
- 4 Waterproof tape (Optional)
- 5 S66 extrusion channel
- 6 S66 removable grate
- 7 Spigot 50mm
- 8 Waterproof membrane
- 9 Timber joist
- 10 Screed
- 11 Pipe 50mm, 80mm or 100mm
- 12 Plywood supports

