

R-47 Threshold

SPECIFICATION SHEET

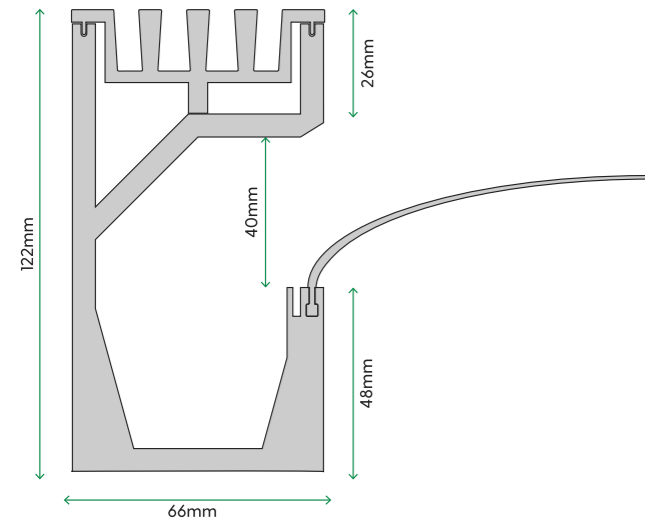
Version: 1



R-47 Threshold

The R-47 Threshold Drain has an open side entry point that allows the water to be carried from the door track into the drainage channel, whilst also draining water from the surrounding surface areas through the top entry point. The double entry point has been meticulously created with precision and function in mind to allow for a flush finish to flow from the interior to the exterior.

Profile



Lengths



Performance and finish

LOCATIONS	Bi-fold track doors and thresholds
FLOW RATES	90 litres per minute
SLIP RATING	Optional Aquabocci WunderGrip (CSIRO R-13) / Non Slip finish available on all Aquabocci products
ANTI CORROSION	Guaranteed not to rust, corrode or tea stain around salt water or chlorine
HEELGUARD SAFE?	Yes
FUNCTION	Can be cut to any length
AQUABOCCI CUSTOM	4 colours available

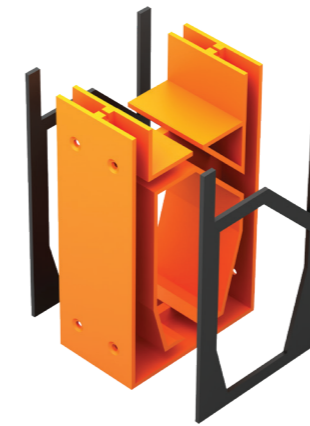
System fittings

A unique feature of the R-47 is an EPDM silicon sleeve that is connected to the side entry point of the channel as well as sitting below the door track extrusion. The EPDM silicon sleeve acts as an extra water barrier and allows the system to fit any threshold thickness, whilst maintaining a flush surface

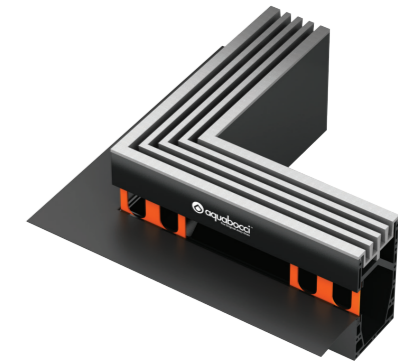
at finished floor level. Corner pieces, end caps and connectors also have EPDM rubber seals which are screwed into place for fast and easy installation. With 4 stunning colours to choose from the only limit is your imagination.

Connector

With EPDM seals and screws



Corner



End Cap

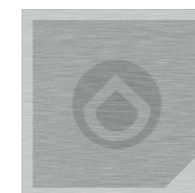
With EPDM seals and screws



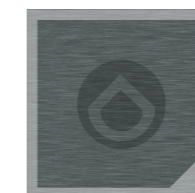
Spigot



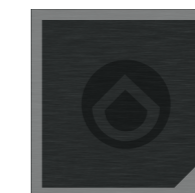
Colours



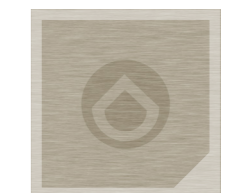
GT Silver



Titanium



Black



Champagne



Ribbon INSTALLATION GUIDE

Installation Example

