

A25

NEW

SPECIFICATION SHEET

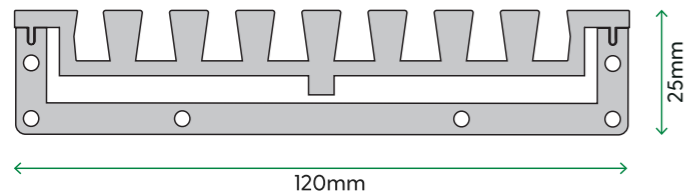
Version: 1



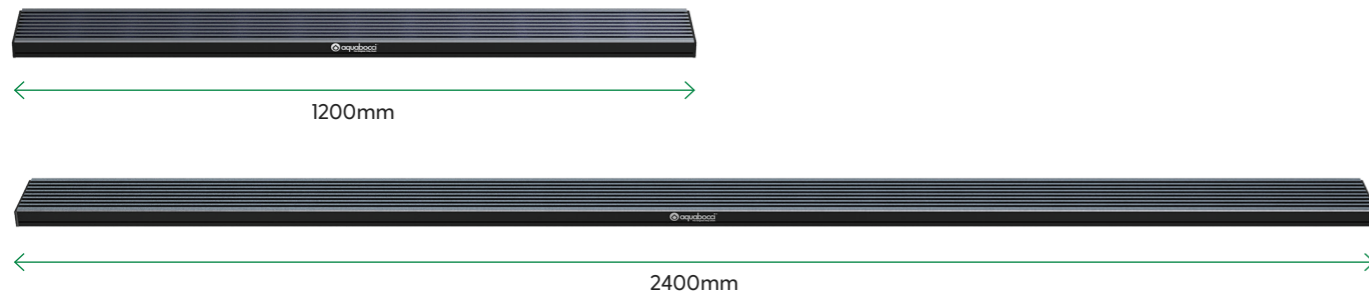
A25 NEW

The A25 drain has been designed to have an ultra low profile ideal for shallow installations. Developing a low profile drainage system with a high flow rate meant pushing the boundaries of design without compromising function.

Profile



Lengths



Performance and finish

LOCATIONS	Swimming Pools, Wet Rooms, Balconies and Driveways
FLOW RATES	Up to 30 litres Per Min / 50mm outlet and 34 litres Per Min / 90mm outlet
SLIP RATING	Optional Aquabocci WunderGrip (CSIRO R-13) / Non Slip finish available on all Aquabocci products
ANTI CORROSION	Guaranteed not to rust, corrode or tea stain around salt water or chlorine
HEELGUARD SAFE?	Yes
FUNCTION	Can be cut to any length
AQUABOCCI CUSTOM	4 colours available

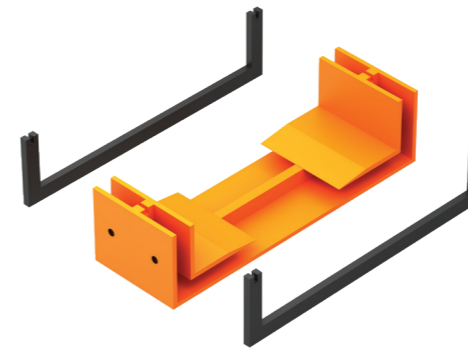
System fittings

It seamlessly integrates into any interior design or landscape setting, so that you can install the A25 system in more places. Corner pieces, end caps and connectors have EPDM rubber seals which are

screwed into place for fast and easy installation. With a smooth metal surface in 4 custom colours, now you're free to do just about anything.

Connector

With EPDM seals and screws



Corner

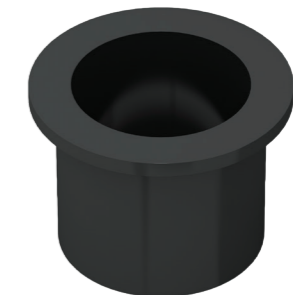


End Cap

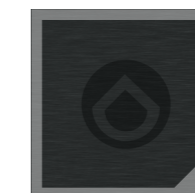
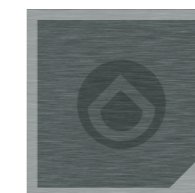
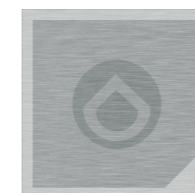
With EPDM seals and screws



Spigot



Colours



aquabocci.com.au



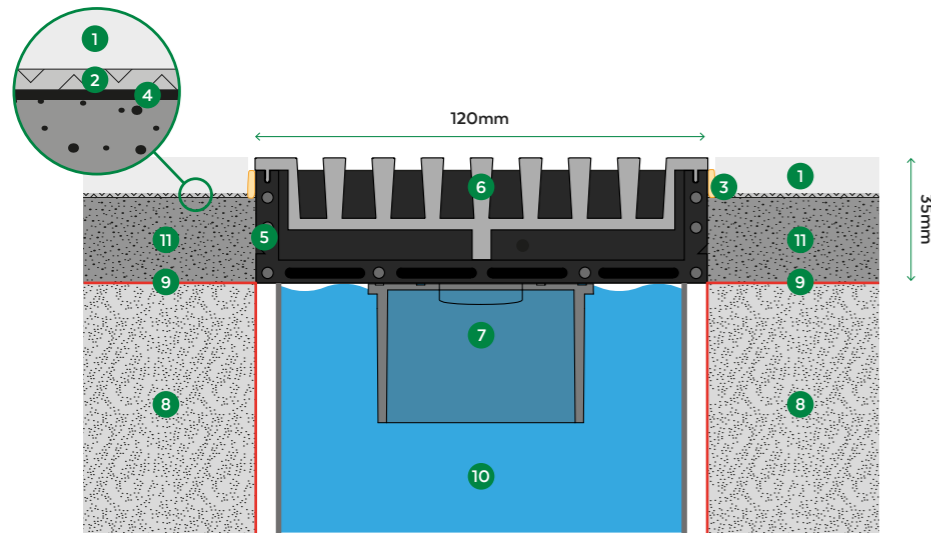
aquabocci.co.uk



aquabocci.com

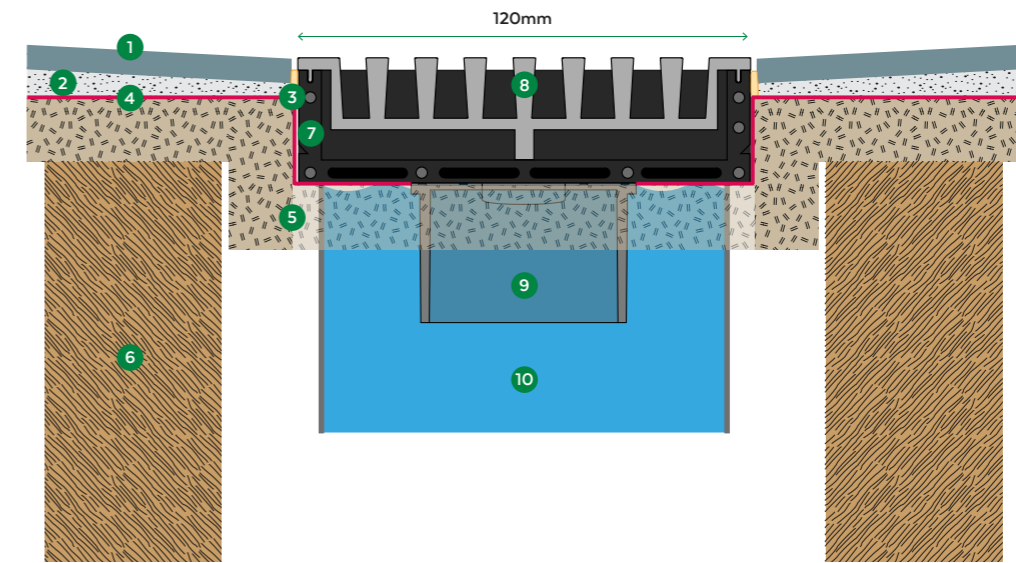
A25 INSTALLATION GUIDE

Slab Installation



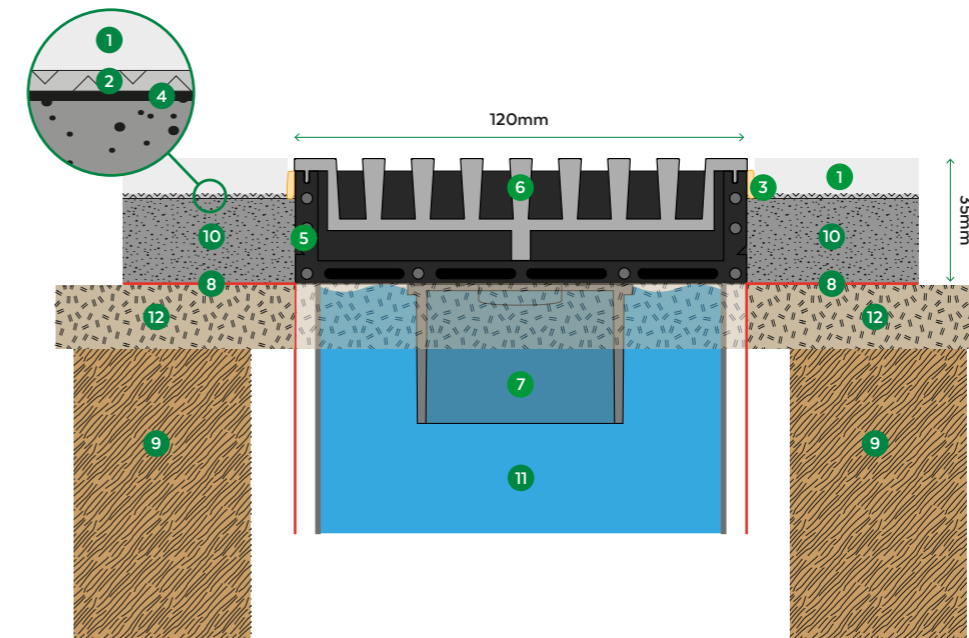
- 1 Tile
- 2 Tile adhesive
- 3 Silicon joint
- 4 Waterproof tape (Optional)
- 5 A25 extrusion channel
- 6 A25 removable grate
- 7 Spigots available to fit 50mm, 75mm, 90mm and 100mm
- 8 Concrete slab or timber
- 9 Waterproof membrane
- 10 Pipe 50mm, 80mm or 100mm
- 11 Screed

Timber Installation without Mortar Screed



- 1 Tile
- 2 C2 Tile adhesive
- 3 Silicon joint
- 4 Waterproof membrane
- 5 Plywood supports plastic channel
- 6 Timber joist
- 7 A25 extrusion channel
- 8 A25 removable grate
- 9 Spigots available to fit 50mm, 75mm, 90mm and 100mm
- 10 Pipe 50mm, 80mm or 100mm

Timber Installation with Mortar Screed



- 1 Tile
- 2 Tile adhesive
- 3 Silicon joint
- 4 Waterproof tape (Optional)
- 5 A25 extrusion channel
- 6 A25 removable grate
- 7 Spigots available to fit 50mm, 80mm, and 100mm
- 8 Waterproof membrane
- 9 Timber joist
- 10 Screed
- 11 Pipe 50mm, 80mm or 100mm
- 12 Plywood supports plastic channel