

CR-360 Cone Rounder



Glimek CR-360 produces high quality pre-rounding as well as final round moulding for both bakeries and pizza producers. Adjustable rounding tracks enable a high flexibility regarding type of products, weight range and capacity.

CR-360 Cone Rounder

Flour duster with two step function for on and off (option)

Rounding length up to 4 m



Collection tray - Easy to clean



Panel with easy access to manoeuvre



Centrally adjustable tracks for a weight range of 30 - 2500 grams

Non-stick coating on tracks for ultimate rounding. CR-360GM version: Non-stick coating also on the cone

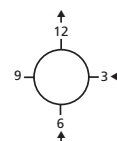
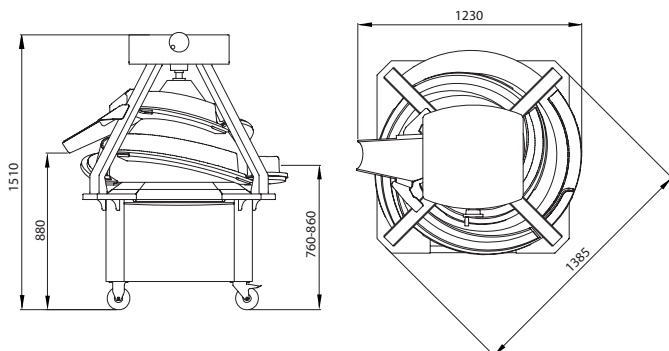
Accessories

Flour duster	Flour duster, mechanical mounted on the outfeed
Hot and cold air blowing unit	Air blowing on the cone to assure the handling of sticky dough. 2,8 kW
GM-version	Glim Metallic non-stick coating on cone
Oiling device	Roller for oil application at the infeed
Oiling system	Photocell controlled oiling system with 3 spraying nozzles spraying on the products. Compressed air required
Outfeed cone	Small driven upside down cone to ensure transfer of sticky dough from last track onto the outfeed conveyor
Outfeed conveyor including transfer roller	Replaces the outfeed chute. L = 600 mm with separate motor drive 0,09 kW
Stainless steel version	Stainless steel frame and covers
Variable cone speed	Frequency controlled drive with speed regulator on the machine head, 1,5 kW, 18-73 rpm (Standard is 46 rpm)
Variable cone speed including hot and cold air blowing unit	Frequency controlled drive with speed regulator on the machine head, 2,8 kW, 18-73 rpm (Standard is 46 rpm) Airblowing on the cone to assure the handling of sticky dough

Technical data

Capacity range	up to 3600 dough pieces/hour*
Weight range	30-2500 grams
Power supply	1,5 kW
Weight, net	520 kg
Weight, gross (carton+pallet)	580 kg
Volume, gross	1,33 x 1,30 x 1,75 = 3,03 m ³

* Depending on weight and consistency of dough piece



Infeed alternatives
Discharge 12 h
Standard infeed at 6h



Glimek AB

P.O. Box 124 • S-280 64 GLIMÅKRA • Sweden
Phone +46 44 449 00 • Fax +46 44 449 10
e-mail: office@glimek.se • www.glimek.se