

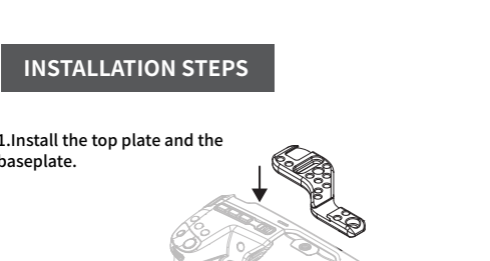
PDMOVIE

RIG AIR PRODUCT MANUALS

PRODUCT DESCRIPTION

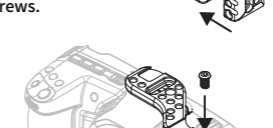
RIG AIR is a versatile half cage, it fits most of the DSLR cameras in this tiny cage. It is equipped with abundant mounting points for accessories, like follow focus, the monitor, the microphone and even on camera light etc.

PACKAGE INCLUDES

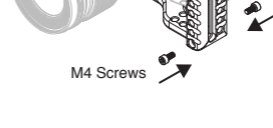


INSTALLATION STEPS

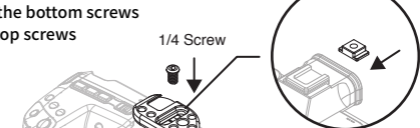
1. Install the top plate and the baseplate.



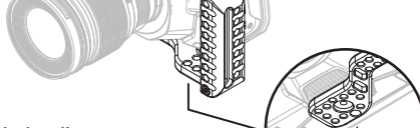
2. Install the side screws.



3. Install the bottom screws and the top screws

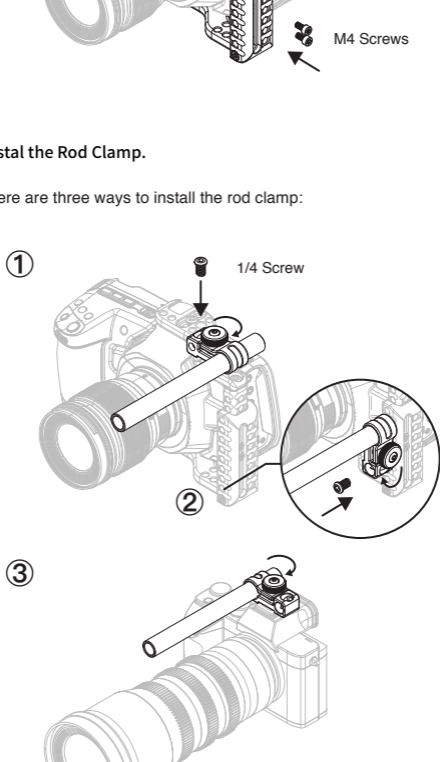


4. Install the handle screws.



5. Install the Rod Clamp.

There are three ways to install the rod clamp:

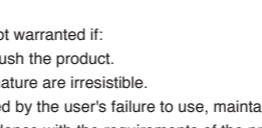


KEY FEATURES

RIG AIR has height adjustable to fit most of the DSLR cameras.



RIG AIR half cage in the left side, it avoids that the left wiring and facilitates the external equipment.



CAUTIONS

The product is not warranted if:

1. Fall, impact, crush the product.
2. The forces of nature are irresistible.
3. Damage caused by the user's failure to use, maintain and keep the product in accordance with the requirements of the product manual.
4. Wear in the process of product use and consumption.
5. Repair or modify the structure of the product without authorization.

This product contains tiny parts, please place the product in a place where children can't reach it.
Before using the product, please read this manual carefully and learn how to use the product. As a result of the negative impact of the operating error caused, directly or indirectly, the company will not be liable for any incidental.

Due to the continued improvement of the follow-up product, there is a possibility that the manual is inconsistent with the actual product function and the appearance, without further notice.
The company reserves all rights of final interpretation.



Facebook: PDMOVIE

RIG AIR

PDMOVIE Technology Co., Ltd.

Web: www.pdmovie.com

E-mail: pd@pdmovie.com

Facebook: www.facebook.com/pdmovie.com.cn

©2019 PDMOVIE All rights reserved.