

Assembly Instructions for Shelving System

Recommended Tools



Please note these are general assembly instructions, your display may differ from the completed unit shown

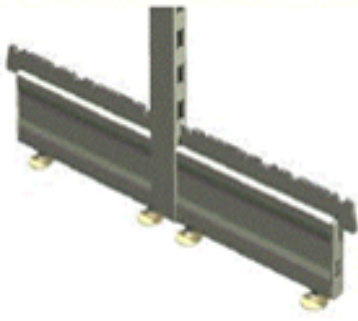


Step 1 – Column and Baseleg Assembly

Locate the baseleg into the bottom of the column as shown →



Using a mallet tap the baseleg until the lug can go no further in the H slot. Unwind the adjustable foot disc a few turns in preparation for levelling later.



If you are building double-sided gondola you will need to fit a further baseleg on the opposite side of the column.

Continue to assemble columns and baselegs as required.

Step 2 – Fit Back Panels and Levelling

Back panels are available in 10cm, 20cm, 30cm and 40cm heights and to suit all bay widths. Normally we have calculated the mix of panels required to suit your column height.

Peg (perforated) panels and metal slat panels are fitted in the same way as plain back panels.

Locate the lugs on the side of the back panels into the slots on the column, starting from the lowest available slot and working upwards until the whole unit is panelled to the top of the column. *If panels are higher or lower than the top of the column something isn't right!*

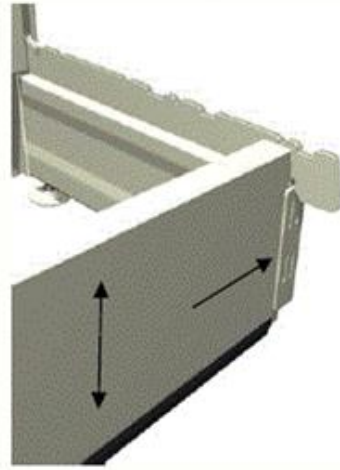
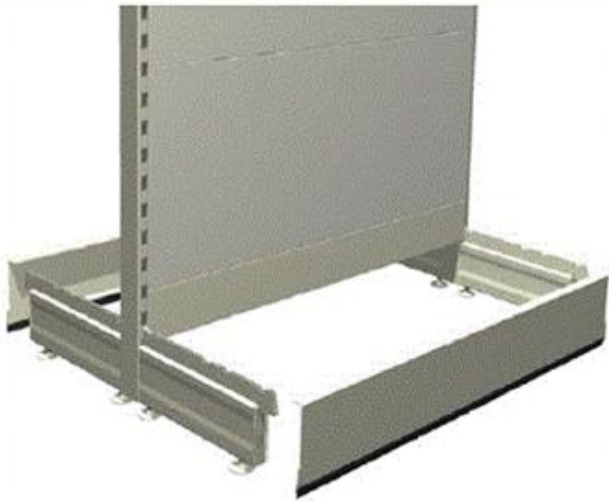
Fit back panels to both faces of the unit on a double-sided gondola

- i. Fit the first two back panels. Make sure the lugs on the back panels are fully down on the sides. The unit should then stand freely.
- ii. make sure the unit is in exactly the right position. If minor changes to position are required carefully slide the unit, taking care that the back panels do not lift and disconnect from the columns causing a collapse!
- iii. Use a spirit level and adjust the threaded foot discs as necessary checking both horizontal and vertical plane.
- iv. Fit the rest of the back panels. For low level units finish with gondola cover & column top caps.



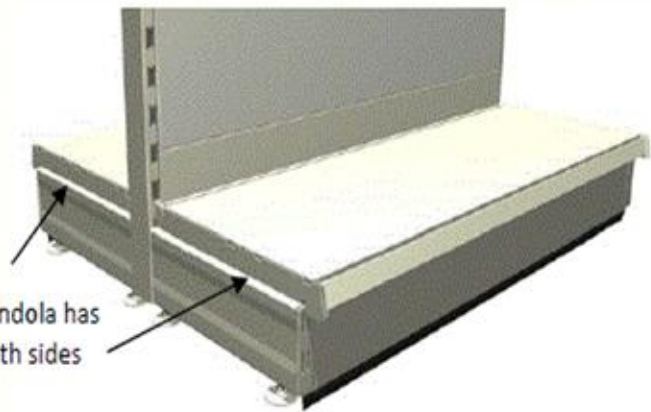
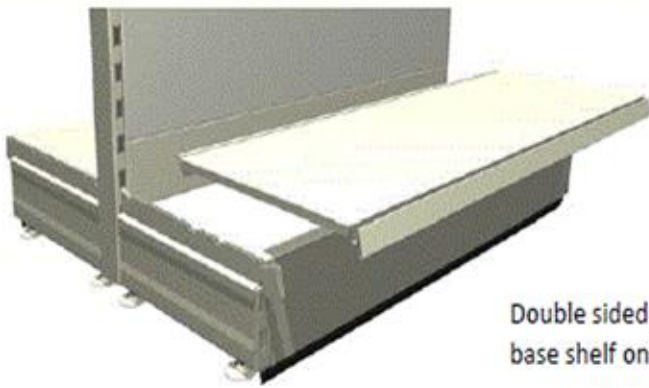
Step 3 – Fit Plinths (if required)

Most units are supplied with Plinths (kickplates). They aren't a structural component so they can be omitted if you don't want them. The rubber dust strip sits on the floor and the plinth locates in the very narrow slot near the front of the baseleg as shown. The plinth is free to move up and down to adapt undulating or sloping floors.



Step 4 – Fit Base Shelves

The base shelf sits on the baselegs, locating in the slot with sloping edge to the front as shown. The shelf will lock onto the baseleg with the rear flush with the back panels and shouldn't move backwards or forwards.



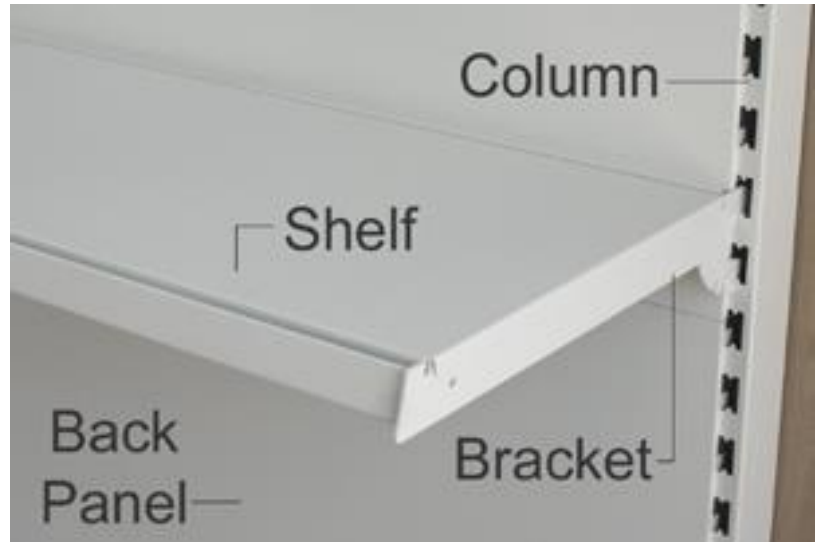
Double sided gondola has
base shelf on both sides

Step 5 – Fit Upper Shelves

Upper shelves sit on shelf brackets, one pair of brackets per shelf. Standard 2 hook and 3 hook shelf brackets can be fitted on horizontal or sloping positions; heavy duty brackets are horizontal only.

Brackets locate in the column on the inside half of the slot – the other half is for the next shelf along on multiple bays. Repeat with other bracket making sure both are at the same level.

Place the shelf on the brackets with the sloping edge to the front as shown. The shelf will lock into position and shouldn't slide forward or back – test to make sure.



Also be sure you have the right length bracket for the shelf – if the shelf overhangs the bracket something isn't right!

This covers the basics. We can't turn you into a shopfitter with one set of instructions but if you are stuck give us a call on 01793 754230 and we will try to help!