

# CLAYMORE ULTRA II 4640

## CLAYMORE ULTRA II 4640

CLC2-4640BK



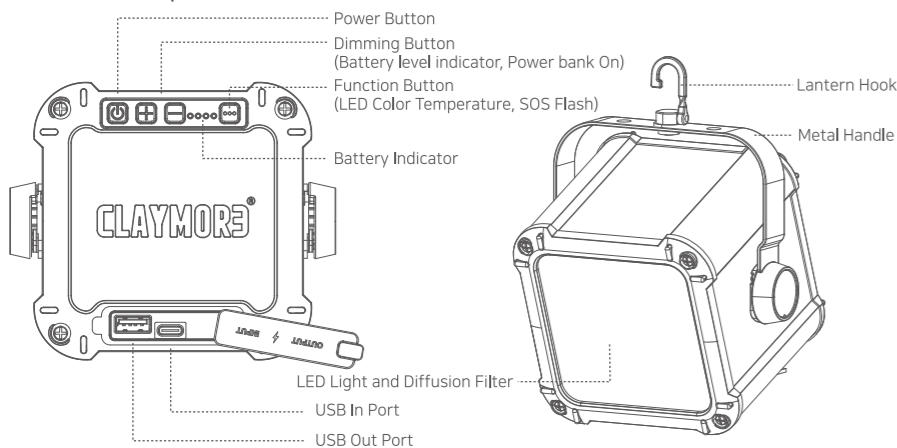
User Manual

This portable light contains Li-ion batteries. Please follow the user manual before use. If any abnormality is found in the product, discontinue use and contact the dealer or a service center where the product was purchased. Any modifications of this product will void the warranty. Misuse of CLAYMORE products may cause user harm.

### Caution

- ① Do not use near high temperatures such as fires or heating equipments. It may cause explosion and ignition.
- ② This product is water resistant. However, if left in the rain for a long time, it may cause malfunction. If the product gets soaked, please quickly wipe it off.
- ③ Do not store or use in vehicles exposed to direct sunlight. It may cause explosion and malfunction.
- ④ Do not touch the light source directly as it may become very hot during use.
- ⑤ Do not use if the product exceeds the operating temperature range (-10 °C to 40 °C).
- ⑥ Do not look directly into the LED light source.
- ⑦ Please do not place in the reach of infants. It may cause swallowing of parts or injury.
- ⑧ Adult supervision is necessary when used by children. Misuse of head lamp may cause injury or electric shock.
- ⑨ Do not insert any metal parts into the terminal block of the connector. It may cause heat, explosion or electric shock.
- ⑩ Do not disassemble or modify the product.
- ⑪ Do not touch the connector with wet hands. There is a danger of electric shock.
- ⑫ After use, be sure to turn off the power. If not, it may cause leakage.
- ⑬ When adjusting the angle, please do not bend with force. It may cause damage to the product.
- ⑭ Dropping or impacting the product can cause damage to the inside of the product, resulting in unexpected failures in normal use. Be careful not to apply impact to the body.

### Parts & Components



### Operating Manual

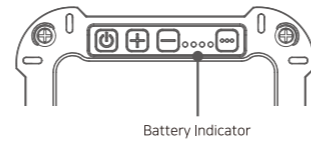
#### ● Charging

- 1) As shown in the figure, open the cover of the product and connect the USB cable to the charging port. Charging time may vary depending on battery capacity and external environment.



USB charger plugs into a PC or laptop and is compatible with charging cable for smartphones.  
 ※ Please charge with the supplied USB cable with 5V 2A / 9V 2A / 12V 1.5A smart quick charger.

- 2) When the product is being charged, the battery level indicator flickers. If the light is not flicking and all the lights are on, it indicates that the battery has been fully charged.



* When Charging		Flickers	* When Using		Flickers
Battery Indicator	Charging		Battery Indicator	Charging	
● ○ ○ ○	0~25%	Flickers	○ ○ ○ ○	0~50%	Flickers
● ● ○ ○	25~50%		● ● ○ ○	50~75%	
● ● ● ○	50~75%		● ● ● ○	75~100%	
● ● ● ●	75~100%	Stop	● ● ● ●	50~100%	Stop
● ● ● ●	Fully Charged	Stop	● ● ● ●	Fully Charged	Stop

- ※ When the battery capacity is less than 4%, Battery check and power bank functions may not activate.
- ※ If the charging cable is plugged in when completely drained, the LED light will flash instantly. This is a normal phenomenon and is not a defect.

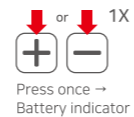
#### ● Operation

- 1) On/Off & Dimming : Push on/off button shortly to turn on and off the lantern.
  - Stepless Dimming  
Press and hold button to increase brightness. Press and hold button to decrease brightness.
  - ※ Blinks once when Maximum and Minimum brightness is reached
  - 5 Step Dimming  
Push button shortly to increase brightness. Push button shortly to decrease brightness.
- 2) Battery Check : Press button once, the battery level is displayed in 4 steps.
- 3) LED Color Change : When the power is ON, pressing function button once enables adjusting the light color in three steps in order of Warm > Bright > Cool

Warm	LED light with low color temperature, warm light feels like ordinary gas lantern
Bright	LED light with a neutral color of daylight and light bulb and comfortable feeling
Cool	LED light with high color temperature, cool light feels like ordinary fluorescent light

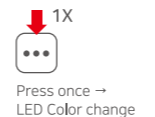
- 4) SOS-Flash: Press and hold button for 2 seconds from ON states to activate the SOS distress signal. Press button once again to stop SOS flash.

#### Battery Check



Press once → Battery indicator

#### LED Color Change



Press once → LED Color change

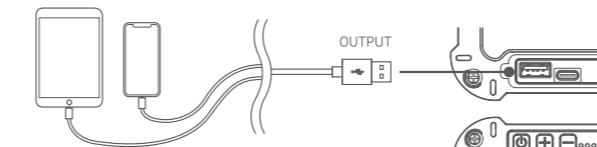
#### SOS-Flash



Press and hold for 2 seconds → SOS Flash

#### ● Power Bank Function

Claymore ULTRA + II model offers smart quick charge. Connect multiple devices with USB cable will automatically start charging. (On status : Battery indicator turns on)  
 If power bank is not working, press or button once to activate it. (5V charge)



※ Charging time may vary depending on battery capacity of different devices.

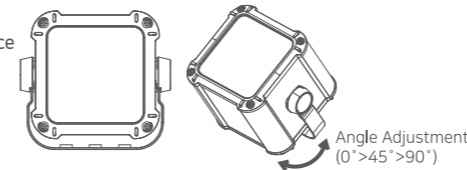


Press once → Activate power bank function

### 4. Instructions

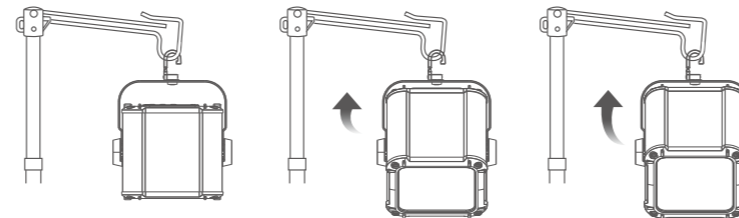
#### ● When making the lantern stand up on a flat surface

- 1) You can place the lantern vertically or horizontally when configuring the lantern on a flat surface.
- 2) Turn the metal handle to adjust the angle of lighting and place it on a flat surface to obtain desired lighting direction.



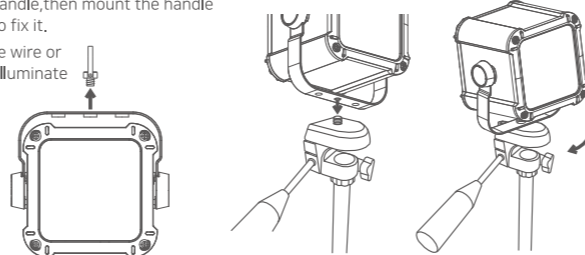
#### ● When hanging on a lantern hook or string

- 1) Turn metal handle to adjust the angle of light in for the desired direction.



#### ● When mounting the lantern on camera tripod

- 1) Unscrew lantern hook from handle, then mount the handle wire onto the camera tripod to fix it.
- 2) Adjust the angle of the handle wire or the direction of the tripod to illuminate the desired spot.



### In Case of Malfunction

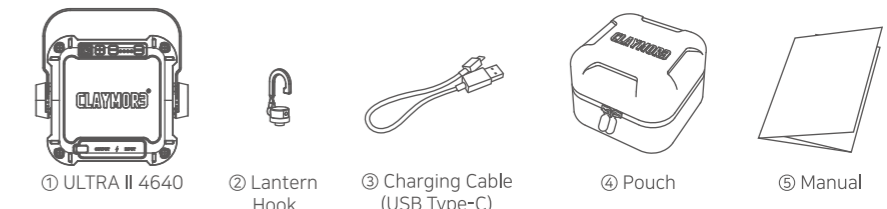
\* If there is something wrong with the product, please check the following first.

1. If it does not activate, check the charging status.
2. If the external device can not be charged, check the On state of the function button.

### Specification

Product Name	CLAYMORE ULTRA II 4640
Model Name	CLC2-4640BK
LED color Temperature	Warm : 3000K , Bright : 4200K , Cool : 6500K (±15%)
Brightness (lumen)	50~2,200 Lm
Run Time	40~264 hour
Size	125×125×100 (mm)
Weight	1145g
Battery Type Battery Capacity	Li-ion 3.6V 46,400mAh(167.04Wh)
Charging Time	13.65 hour (Quick charge adapter)
INPUT	USB 5V 2A / 9V 2A / 12V 1.5A
OUTPUT	5V 2A / 9V 2A / 12V 1.5A
Origin	MADE IN KOREA

### Contents



### ⚠ Caution for long-term storage

- \* If the battery is completely drained, the battery indicator might not flash. If this happens, plug the USB cable back in or press the button to turn the battery indicator on again.
- \* For long-term storage, fully recharge the battery. (Repeat every six months)
- \* Please keep in mind that if stored below -10°C the battery life may be affected.
- \* Please keep in a dry place without moisture.

## Warranty

Item	CLAYMORE ULTRA II 4640
Model No.	CLC2-4640BK
Seller	
Date of Purchase	

1. Thank you for purchasing CLAYMORE series of Prism Co., Ltd.
2. This product has passed strict quality control tests. If the product is not functioning properly, please contact an authorized service center.

### Free Service

- 1) Failure of the product under normal operating conditions during the warranty period will be repaired by Prism or authorized service center on free of charge. Some shipping or handling charges may be involved.
- 2) Warranty period: 1 year.

### Charged Service

- 1) Damage caused when the warranty period is over.
- 2) Damage caused due to the user's mishandling, abuse, or improper operation.
- 3) Damage caused by arbitrary or personal repair or disassemble in unauthorized service center.
- 4) Damage from input electricity or cable defect.
- 5) Damage caused by natural disaster.

### Official Import Distributor

Bigtent Outdoor Equipment Ltd. [www.bigtentoutdoors.com](http://www.bigtentoutdoors.com)  
 info@bigtentoutdoors.com

### Manufacturer

Prism Co., Ltd. [www.claymorelight.com](http://www.claymorelight.com) / [www.prismlight.co.kr](http://www.prismlight.co.kr)  
 info@prismlight.co.kr  
 101-1501, Chunui-Technopark, Bucheon-ro 198 Road, 36,  
 Bucheon-si, Gyeonggi-do, Korea