

*Fold Down*

# CAMP TABLE



## **Applications**

installation instructions

These installation instructions apply to the following CBI Off Road products

**CBI Camp Tables** – For use with Single & Double Swing arms

## **IMPORTANT!**

**THANK YOU** for purchasing this CBI product. Please read through this entire document before proceeding with installation. If you are not confident in your mechanical skills, please seek the help of a professional to perform the installation. Check your packages immediately upon arrival to ensure that everything listed is included, and to check for damage during shipping. ***If anything is missing or damaged, or if you need technical assistance with any aspect of this installation, call CBI at (208) 528-0664 as soon as possible.***

## IMPORTANT!

If your CBI product comes as unpainted, bare steel or aluminum. You will want to either powder coat or paint prior to final installation, however it is very important to PRE-INSTALL the unpainted product first, following these instructions, BEFORE painting or powder coating any of the components! This will ensure that all parts are correct and any incidental trimming or drilling will have been done prior to coating. Also, it will give you a practice run to familiarize yourself with the process, to lessen the likelihood of damaging the finish during final installation.

CBI Off Road is NOT RESPONSIBLE for paint or powder coating costs, damage to paint or powder coating, or costs associated with inadvertently painting or powder coating components that are defective or were shipped or assembled in error. It is the customer's responsibility to pre-install and verify that all parts are correct prior to paint or powder coat



Follow along with or install tech as he installs this product on our YouTube channel  
[youtube.com/user/CBIOFFROADFAB](https://www.youtube.com/user/CBIOFFROADFAB)

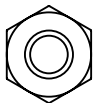
### Questions?

Call: 866-522-0697

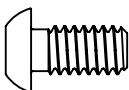
Email: [info@cbioffroadfab.com](mailto:info@cbioffroadfab.com)

## Hardware: What is included

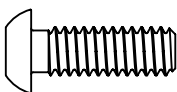
**A | 10** 1/4"-20 Hex Thin Nylon Insert Lock Nut



**B | 8** 1/4"-20 x 1/2" SS Button Head



**C | 2** 1/4"-20 x 3/4" SS Button Head



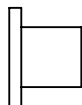
**D | 4** #6 x 3/8 Flat Head Phil Mach Screw



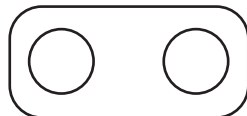
**E | 4** #6-32 Steel K-Lock Nuts



**F | 2** Nylon Bearings



**H | 1** Catch Spacer



**G | 4** Cable Ends



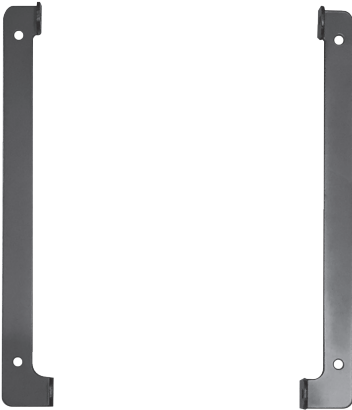
**I | 1** Ball Catch



**J | 2** Cables



**K | 1 set** L/R Table mounting brackets



**L | 1** Table



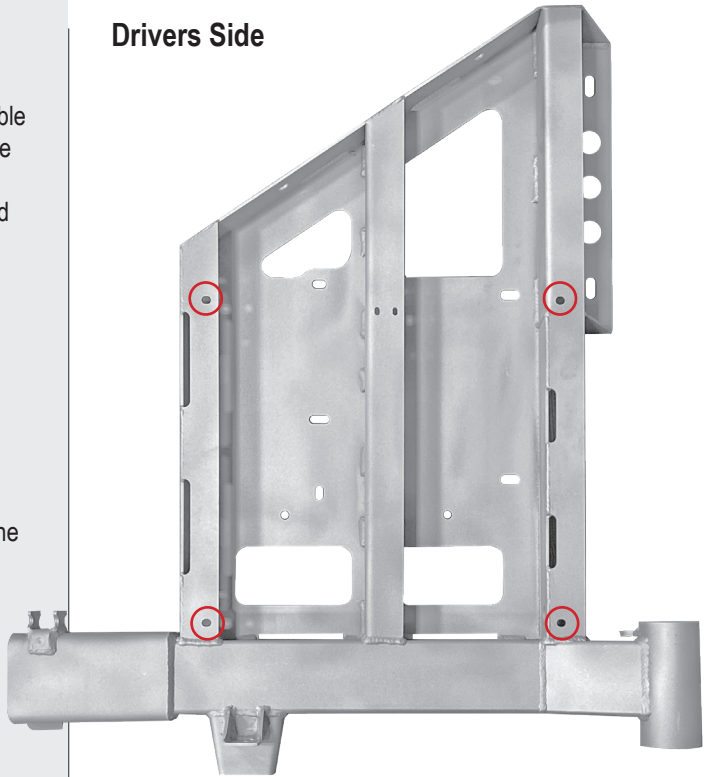
## Installation

Start by installing the L/R Table mounting brackets "K". These brackets are mounted using the Button head bolts "B" and nylock nut "A".

### Note:

There is a Top And Bottom the the mounting brackets.

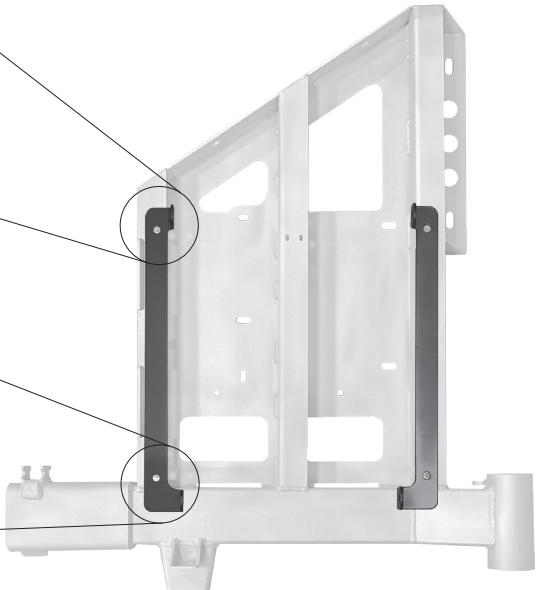
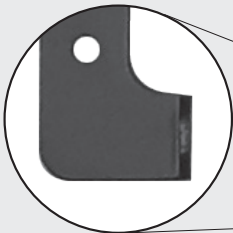
## Drivers Side



TOP



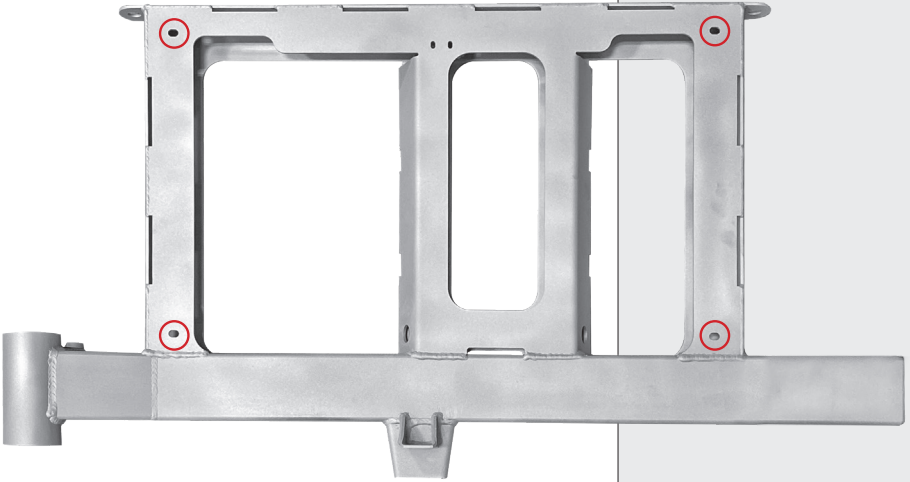
BOTTOM



## Passenger Side

### IMPORTANT

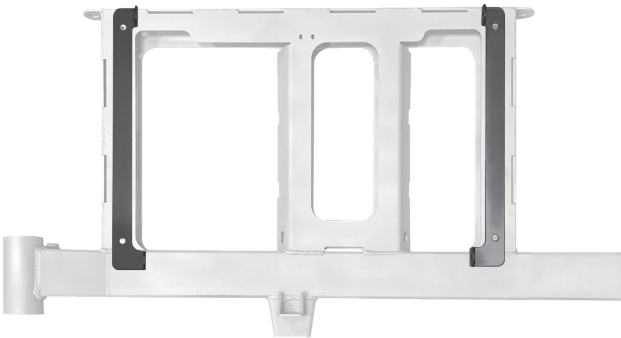
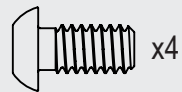
Do not tighten these brackets at this point. Tighten them down just enough that you can still freely move the brackets.



**A** | 1/4"-20 Hex Thin Nylon Insert Lock Nut



**B** | 1/4"-20 x 1/2" SS Button Head

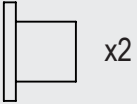


TOP/FRONT 



 BOTTOM/BACK

**F** | Nylon Bearings



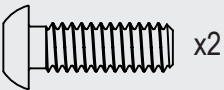
1. Insert the nylon bearings into the bottom holes on the table.



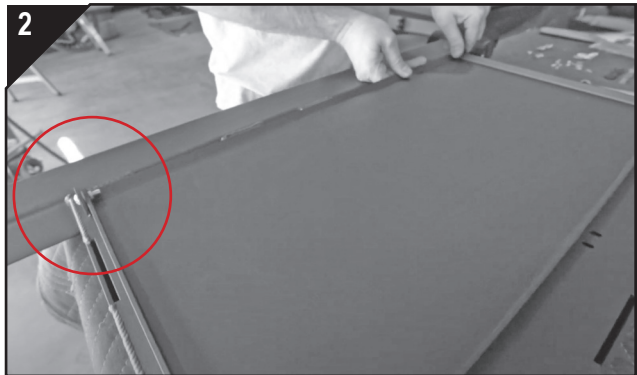
**A** | 1/4"-20 Hex Thin Nylon Insert Lock Nut

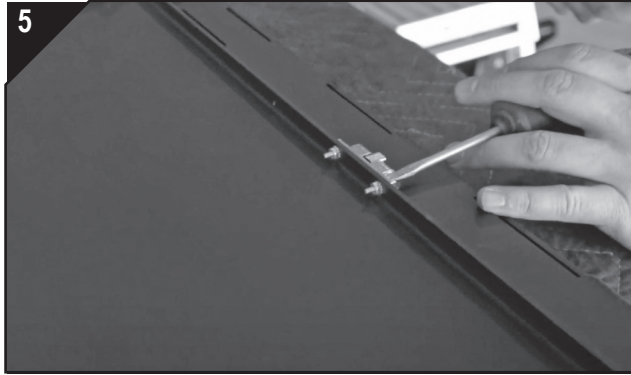
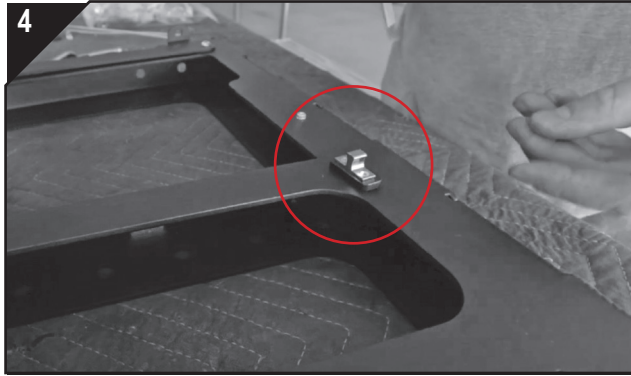


**C** | 1/4"-20 x 3/4" SS Button Head

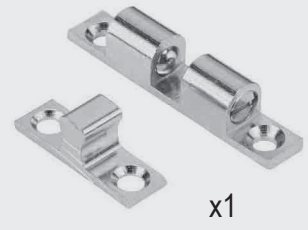


2. Use the longer button heads "C" to attach the table to the bottom hole of the mounting brackets.

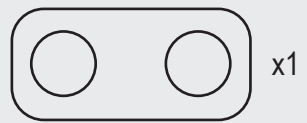




**I | Ball Catch**



**H | Catch Spacer**



**D | #6 x 3/8 Flat Head Phil Mach Screw**



**E | #6-32 Steel K-Lock Nuts**

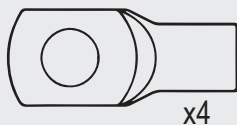


3. The #6 machine screws "D" and #6 lock nuts "E" will be used to mount the ball catch to the table and swing arm. Just hand tighten this hardware for now. *(you can discard any hardware included in the ball catch bag).*

4. Use the #6 machine screws "D" and #6 lock nuts "E" along with the spacer "H" to mount the catch on the sing arm as shown.

5. With all the hardware installed you can now squared the table with the brackets. Adjust until the ball catch lines up properly and tighten all of the hardware.

## G | Cable Ends



## J | Cables



6. The cables will need to be cut to length. The cables should be cut to roughly 15.5" in length (*not including the cable ends*).

7. Strip the coating back from the ends of the cables. Strip back about 3/4".

8. Secure the cable ends "G" to each end of the two cables. This can be done by crimping the cable ends as shown in image 8.

Alternatively, you can heat the cable end and melt solder into the cable ends. Insert the cable into the molten solder before it solidifies. (see 8a-8b)

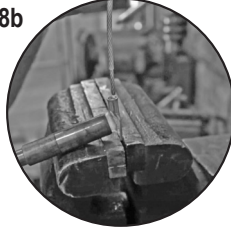




8a



8b



9



10



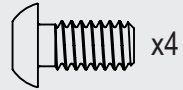
**Note:**

Double check the length before completing the cables. You can check by holding the table 90° to the swing arm and check the cable length.

**A** | 1/4"-20 Hex Thin Nylon Insert Lock Nut



**B** | 1/4"-20 x 1/2" SS Button Head



9. Install the completed cables to the top hole of the mounting brackets "K" .

10. The other end attaches to the top/front of the table.

These connections should only be snugged tight to allow the cable ends to move freely in the mount.



792 E Iona Rd.  
Idaho Falls, ID 83274  
[cbioffroadfab.com](http://cbioffroadfab.com)  
**208.528.0664**